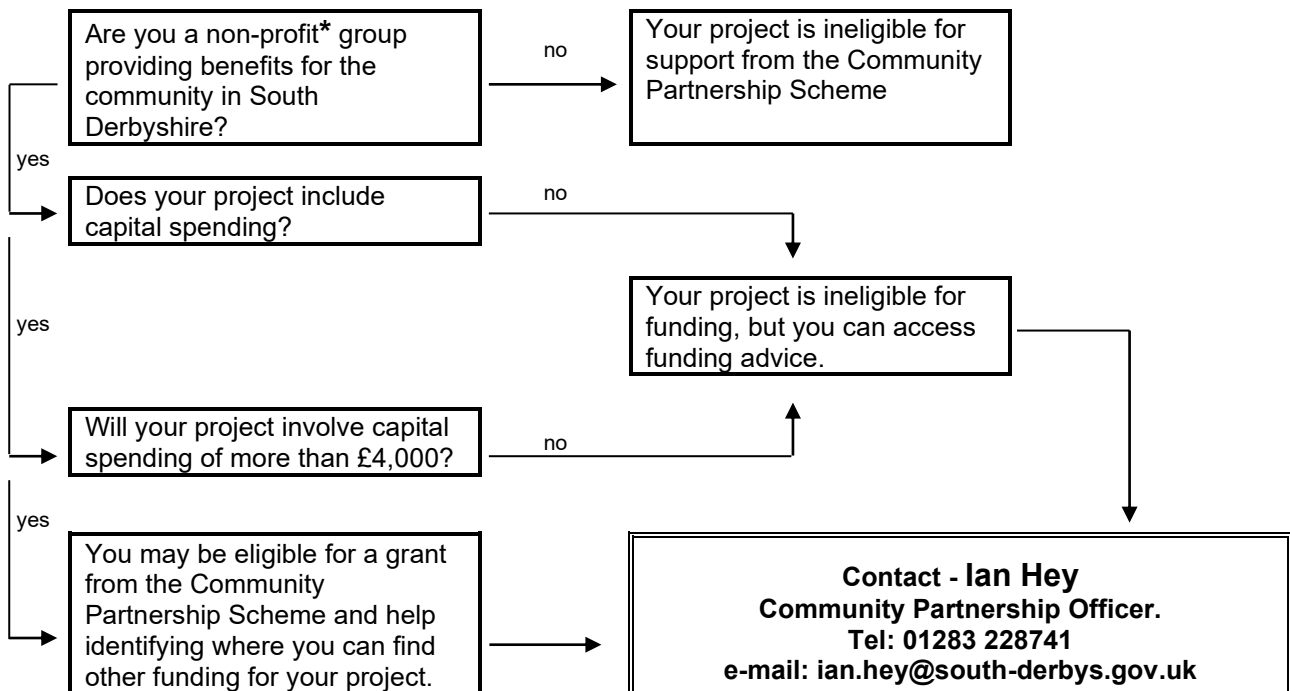
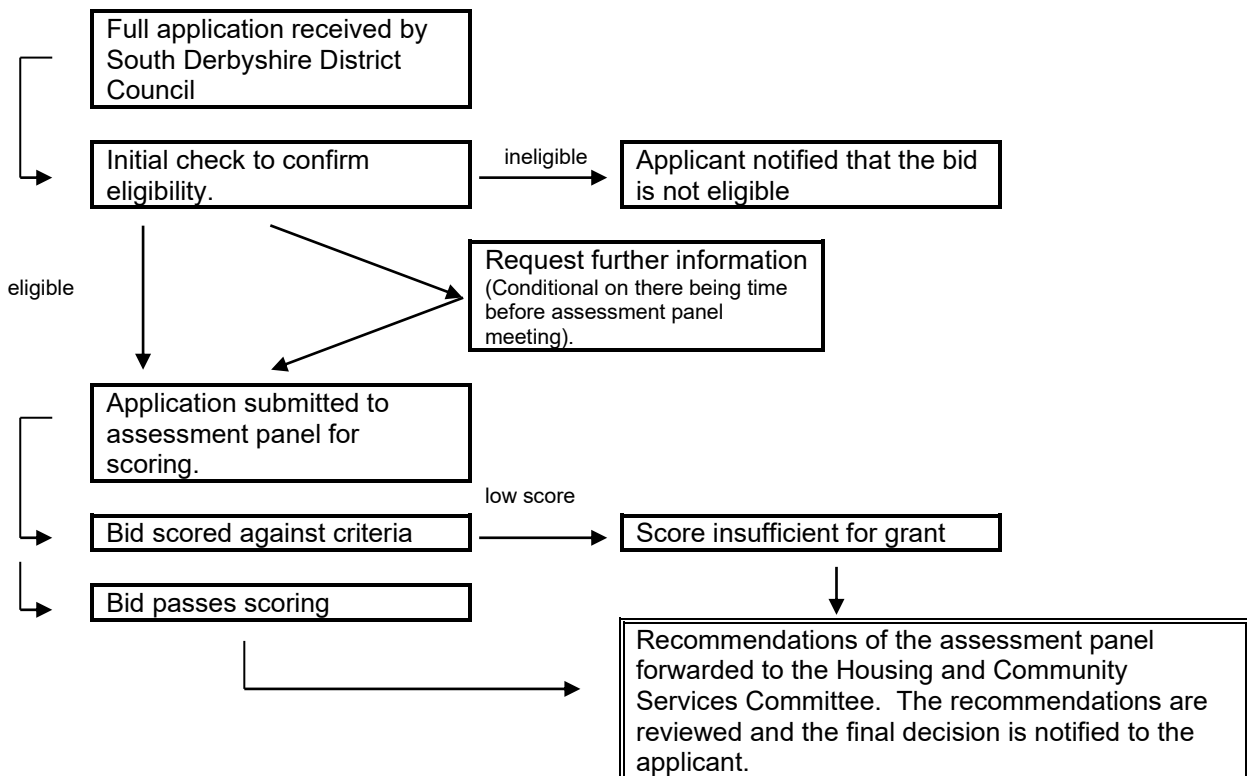


South Derbyshire District Council Community Partnership Scheme



Appraisal Process



*Non-profit in the context of the Community Partnership Scheme refers to charities, constituted community groups (you have a set of agreed rules and procedures) and clubs. In the context of this scheme Parish Councils are also deemed to be non-profit groups able to apply for projects that are outside of the statutory duties placed upon them.