

Compost Scheme Review Working Panel

Wednesday, 7th January 2004

Present: Labour Group

Councillors Carroll, Shepherd and Southerd.

Conservative Group

Councillors Bladen and Harrison (replacing Councillor Martin).

The notes of the meeting of 17th September were agreed as a true record.

Issues arising from the visits to Lichfield District Council and East Staffordshire Borough Council.

Lichfield District Council provide an alternate weekly black bin / brown bin refuse collection system plus a weekly collection of paper, glass, cans, textiles and plastics. The Authority is regarded as a flagship Council with regard to the high percentage recycled (42.6% in 2002/03) although waste collection costs are relatively high (£44.30 per household in 2002/03).

The additional cost of implementing a similar collection system in South Derbyshire, but based on a fortnightly collection of "dry recyclables", is estimated at £8 per household per year. It has not been possible, as yet, to ascertain the cost of weekly collections.

East Staffordshire Borough Council provide a weekly black bin collection, fortnightly collections of "green waste", plus a fortnightly collection of paper, glass, cans and textiles. The Council's recycling percentage is below average (8.0% in 2002/03) and waste collection costs are around the average (£34.20 per household in 2002/03).

The additional cost of implementing a similar collection system in South Derbyshire, in effect reverting to a weekly black bin collection, is estimated at £16 per household per year.

South Derbyshire's recycling percentage in 2002/03 is 12.3% with a waste collection cost of £35.30 per household.

The statutory recycling standard for South Derbyshire is 21% in 2005/06.

Formal written complaints

It was agreed that officers should respond appropriately following the Panel's next meeting on 21st January 2004 and following consideration of the Panel's deliberations at the meeting of the Environmental and Development Service Committee on 29th January 2004.

Other related issues

It was agreed that the improper use of the Council's Recycling Banks by the proprietors of Public Houses should be investigated and brought to a halt.

It was agreed that the competitiveness of the waste management services should continue to be assessed in accordance with the arrangements detailed in the Cleansing the Environment Best Value Review Action Plan.

Way Forward

The Panel reached the following conclusions:

1. The Compost Scheme has proved to be a successful and cost-effective system in enabling the Council to meet its recycling targets. The waste collection systems employed in Lichfield and East Staffordshire are not affordable in South Derbyshire at this time and, in the case of East Staffordshire, may not be desirable in terms of meeting recycling targets and promoting Waste Minimisation initiatives.
2. 80 complaints were received by the Council in regard to the scheme in the period between 1st January 2002 and 31st August 2003. However, it is recognised that people do not necessarily complain directly to the Council if they are dissatisfied and some householders did experience some difficulties especially during the hot weather last summer. The concerns expressed by the public have been explored seriously and thoroughly.
3. The main difficulty expressed by residents concerned the insufficient capacity caused by the black bin being only emptied fortnightly. This had resulted, in some cases, in foul smells and, in the worst extreme, the waste becoming infested with maggots.
4. The implementation of the new kerbside scheme later this month for the fortnightly collection of glass, cans, foil, textiles and paper from the 12,000 households currently serviced by the Compost Scheme should help to reduce the pressure on capacity caused by the by alternate black bin / brown bin collections.
5. The Council should explore every opportunity for funding the expansion of the above scheme across the district and, if and when affordable, to include the collection of plastics.

6. In order to promote the recycling message and to minimise the difficulties outlined above in terms of smelly and infested bins, the Council should be proactive in providing appropriate and timely advice and support to the public about their crucial responsibility in recycling and managing their own waste, e.g. crushing plastics, wrapping waste, keeping bin lids closed, etc. The availability of options such as smaller bins, communal bins, biodegradable sacks, etc. should be made well known to residents.
7. A publicity / awareness raising plan, including public consultation, initiatives with schools, etc., should be implemented during the forthcoming financial year.
8. A report detailing the Panel's considerations should be submitted to the Environmental and Development Services Committee meeting on 29th January 2004.

Date and time of Next Meeting

21st January 2004 at 3.30p.m. (to agree the above report).

COMPOST & RECYCLING SCHEMES**FINANCIAL IMPLICATIONS****ADDITIONAL COSTS TO THE COUNCIL**

<u>Scheme</u>	<u>Estimated tonnage</u>	<u>Estimated charge per tonne</u>	<u>Less recycling credit</u>	<u>Estimated cost per tonne to the Council</u>	<u>Estimated annual cost</u>	<u>Estimated cost per household</u>
Extend the current scheme for the fortnightly collections of glass, cans, foil, textiles & paper across the district	2,600	£62.00	£31.67	£30.33	£78,858 * see Note 1	£3.29 (24,000 households to be added to the scheme).
As above fortnightly collections but include the collection of plastics .	2,670	£110.00	£31.67	£78.33	£209,141 * see Note 2	£8.71 (24,000 households to be added to the scheme).
Weekly collections not including plastics.	3,500 * see Note 3	£90.00	£31.67	£58.33	£204,155 * see Note 1	£8.50
Weekly collections including plastics .	3,550 * see Note 3	£165.00	£31.67	£133.33	£473,321 * see Note 2	£19.72
Amend the compost scheme to provide weekly black bin collections . * see Note 4					£576,000	£16.00 (36,000 households at present).

The costs do not include the one-off start-up costs of the scheme in terms of purchasing the recycling boxes, publicity, etc. The funding of these costs for the existing scheme was obtained through a successful bid to DEFRA. The estimated costs are in the region of £90,000. A bid has already submitted to DEFRA for such funding. The result of the bid is expected at the end of February.

Note 2

As above although costs are likely to increase by a further £70,000 in order to supply an additional box per household for the plastics.

Note 3

The estimated tonnage assumes a 33% increase for a weekly collection as opposed to a fortnightly one.

Note 4

The adjustment to a weekly black bin collection may act as an encouragement not to recycle. The adjustment would oppose the drive towards Waste Minimisation and would have an adverse effect on the Council's ability to meet its statutory recycling standard.

Note 5

The costs detailed do not allow for any upgrading of the current "box" recycling scheme. The current scheme, servicing 12,000 households, will cost the Council approximately £48,000 per year (£4.00 per household).

Composting News

for Hatton

Spring is upon us and it's time to dust off your brown bin ready for some more composting action!



Get ready on your starting blocks Hatton – your first brown bin collection for the composting year is:

Tuesday 11th March 2003

Please don't forget this date because we will not be able to empty your black bin on this day if you put it out by mistake.

From 11th March onwards the alternate weekly collections resume. To help remind you a calendar of compost collection days is available from Customer Services 01283 595 758.

Reminder List of 'Brown Bin'

Compostable Materials

FROM THE GARDEN

Grass cuttings	Pet straw
Weeds	Prunings and clippings

FROM THE HOME

Fruit peelings & cores	Stale bread
Food leftovers – (NO MEAT OR FISH WASTE)	
Eggshells	Kitchen Towels
Tea bags	Vegetable peelings
Cut flowers	Pet and Human hair
Salad	Coffee grounds

COMPOST SCHEME PROGRESS

Compost schemes have been operating in the district since September 1996. Over 8,000 households participate in the scheme and produce 2,000 tonnes of compostable waste for recycling every year.

In 2003/04 another 6,700 households in Bretby, Calke, Smisby, Ticknall, Midway, Hartshorne and Woodville will be introduced to the scheme.

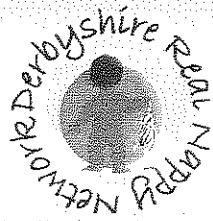
The composting scheme is the largest contributor to the Council's recycling rate and will help us achieve our statutory targets of 14% in 2003/4 and 21% in 2005/6.



Top Tips for Composters

To help keep your compost bin clean try the following tips:

- *Make sure you keep your bin tightly closed*
- *Put your bin out for emptying regardless of how little may be in it*
- ***NEVER** put MEAT, FISH or cooked food waste in your bin*
- *Wrap waste in a single sheet of newspaper to help to keep your bin clean*



Nappies

– did you know ?

Disposable nappies make up 5% of total household waste.

In Derbyshire this equates to over 59 million nappies every year that take between 200 – 500 years to decompose in landfill sites.

Modern reusable nappies are now available and have changed dramatically from old fashioned 'Terry' nappies.

For free and unbiased information on reusable nappies please contact Emily Robe of Derbyshire Real Nappy Network on 01332 572 779 or website www.derbyrealnappies.co.uk or email info@derbyrealnappies.co.uk

Where Can I Recycle More ?

In your area we have recycling centres for all the following materials:

	GLASS BOTTLES & JARS	PLASTIC BOTTLES	FOOD TINS & DRINKS CANS	TEXTILES	CARDBOARD	NEWSPAPERS & MAGAZINES
TWYFORD ROAD WILLINGTON	YES	YES	YES		YES	YES
STATION ROAD HATTON	YES	YES	YES	YES	YES	YES
SCROPTON ROAD HATTON	YES	YES	YES			
METRO HATTON	YES		YES			
MAIN STREET HILTON	YES	YES	YES	YES		YES
EGGINGTON ROAD ETWALL	YES					
CHESTNUT GROVE ETWALL		YES	YES			



Composting Enquiries ?

Please call

01283 595 758

Top Class Composters

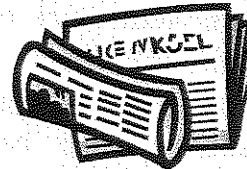
We have regular requests from keen composters wanting to know how much is collected. So here it is, kilos of compostable waste collected per property in each area from April to Dec 2002:

Etwall & Egginton	270
Repton & Milton	260
Hilton	240
Willington	240
Hatton	180
Melbourne & Kings Newton	60

(September – December only)

We are looking at these results to see how we can increase the amounts collected across the scheme to meet the excellent performance set in Etwall and Egginton.

'Blue bag' paper recycling collections for HATTON take place fortnightly on



Newspaper
and Magazine

Recycling
Collections

a Monday:

MARCH 2003	10 TH	24 TH	
APRIL 2003	7 TH	21 ST	
MAY 2003	5 TH	19 TH	
JUNE 2003	2 ND	16 TH	30 TH
JULY 2003	14 TH	28 TH	

At 8:00am on collection day please put your blue bag or carrier bag next to the pavement where it can be easily seen by the collection crew.

Thank you for Composting &
Recycling

Composting News

One & Only !

Participation in the composting scheme has sadly declined in some streets and in some cases households have not been making full use of the composting scheme.

Unfortunately they have been putting out a large quantity of side refuse on black bin collection day. In some instances as many as 12 sacks and even garden fence panels have been put out !!

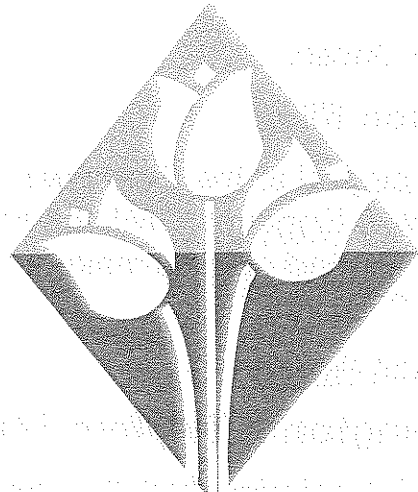
This excess waste has meant additional journeys to the landfill site in Bretby - undoing the environmental good of the composting scheme and increasing the cost of the refuse collection service.

With this in mind we have unfortunately had to limit the quantity of side refuse that we will take alongside black bins to **one refuse sack per property.**



WILLINGTON & TWYFORD

1 sack limit will start on **Monday 22nd May 2000.**



ETWALL, EGGINTON & HATTON

1 sack limit will start on **Tuesday 23rd May 2000**

If you are having difficulty deciding which bin to put your waste into please give us a call



01283 595 758

Best Composting Village

Based on compostable material collected per household February - April 2000.



Gold Award

**Etwall & Egginton
70kg.**

Congratulations on your impressive jump from Bronze to Gold placing !!

Silver Award

Hatton 69kg.

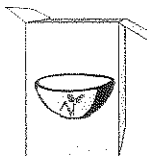
Just pipped to the Gold Award by Etwall & Egginton. Will the second time second placers make a run for gold ?

Bronze Award

Willington & Twyford 54kg.

Was it beginners luck that gave the compost scheme newcomers the first Gold Award ?

Withdrawal of Cardboard Recycling Skip



Regretfully we have to inform you that the monthly recycling service for cardboard boxes and mixed paper at John Port school, Etwall has been discontinued.

Unfortunately the skip was not being used to its full potential and Kappa Paper could not continue to run the service at a loss.

Only 1 bag of Side Refuse - Help !!!!!

Don't panic - there is a solution to excess waste. You will not have to develop muscles like Popeye to cram all your non compostables into your black bin ! Please donate them to a worthy cause - your local recycling centre.

	GLASS BOTTLES & JARS	PLASTIC BOTTLES	FOOD TINS & DRINKS CANS	TEXTILES	NEWSPAPERS & MAGAZINES
TWYFORD ROAD WILLINGTON	YES	YES	YES		YES
STATION ROAD HATTON	YES	YES	YES	YES	YES
SCROPTON ROAD HATTON	YES	YES	YES		
METRO HATTON	YES		YES		
EGGINTON ROAD ETWALL	YES				
CHESTNUT GROVE ETWALL			YES	YES	

BLUE BAG NEWSPAPER RECYCLING SERVICE

Your next paper recycling collections fall on the following dates:

Egginton

3 May; 31 May; 28 Jun;
26 July; 23 Aug; 20
Sept



Hatton

8 May; 5 Jun; 3 July;
31 July; 25 Sept; 23 Oct

Etwall & Willington

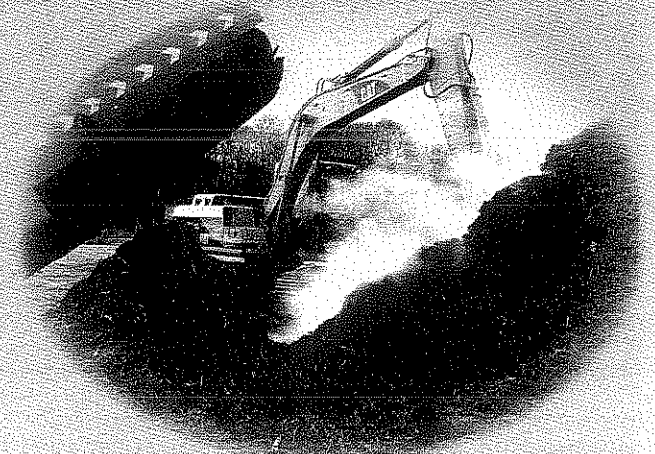
9 May; 23 May; 6 Jun; 20 Jun; 4 Jul; 18
Jul; 1 Aug; 15 Aug; 29 Aug; 12 & 26 Sept

thinking globally acting **locally**
your new waste collection service

dealing with
waste in a
sustainable
way....

**South
Derbyshire**

At the Heart of The National Forest



We cannot continue to throw away our waste without a second thought. Landfill sites are filling up faster than ever and the waste generated in South Derbyshire grows by 5% every year. To reverse this trend Government have set targets which South Derbyshire District Council have to meet. We have to recycle 14% of residents household waste this year 2003/04 and 21% by 2005/06. In order to achieve these targets we are introducing a more sustainable system for the collection of household waste across the District. We cannot make the change alone, we are all responsible for the waste we produce.

The new collection system will allow everyone to help preserve the environment. This leaflet explains in detail how the new service will operate and lists a helpline number should you have any queries.

Thank you for recycling and composting

recycling recycling recycling

The New Integrated Waste Recycling / Composting scheme

The central composting scheme was first implemented on a 12 month trial basis in 1996. Having surpassed expectations the scheme has been gradually extended to cover the 9000 South Derbyshire households it incorporates today.

Important dates coming up...

Roadshows

Residents will have the opportunity to discuss the new composting scheme with Officers on Saturday 17th May 2003.

A mobile exhibition van will be located as follows:

- 9.45am – 11.45am Dunsmore Stores, Salisbury Drive
- 12.00pm – 2.00pm Springfield Road, junction Eastfield Road

Residents visiting the exhibition will be able to collect a free kitchen bin to assist with the separation of their waste.

Brown Wheeled Bin Delivery Dates


Wheeled bins will be delivered direct to householders week commencing 2nd June 2003. If you have requested a kitchen bin it will also be delivered during this week. Householders who receive a 'black sack' collection will be issued with biodegradable sacks to allow them to participate in the scheme.

Alternate weekly collections

To allow for the proper separation of waste the refuse collection service will alter to an alternate weekly service i.e. one week we will empty your brown wheeled bin, the following week your black wheeled bin and so on. The calendar on the opposite page indicates which date you should present your brown bin for collection.

Brown bins should go out on the days marked red and black bins the alternate Fridays. If you are uncertain about your collection dates please phone 01283 595 758.

The first brown bin collection for Midway Round P will take place on Friday 27th June 2003.



Nappies – did you know?

It is estimated that disposable nappies make up some 5% of total household waste. In Derbyshire this equates to over 59 million nappies per year, and it is estimated that they will take between 200 and 500 years to decompose.

It is important that parents are aware of the environmental consequences of disposable nappies and the alternatives that are now available. Modern re-usable nappies have developed considerably since the old fashioned 'Terry' style nappies.

Real Nappy Initiative

South Derbyshire District Council are pleased to work with Emily Robe of Derbyshire Real Nappy Network who provide free unbiased information on selecting and using cloth nappies. Please contact 01332 572 776 to discuss reusable nappies or email info@derbyrealnappies.co.uk or website www.derbyrealnappies.co.uk

Midway Compost Collection 2003

(Round P)

MAY	JUNE	JULY	AUGUST
M T W T F S S	M T W T F S S	M T W T F S S	M T W T F S S
1 2 3 4	BROWN BINS DELIVERED 1	1 2 3 4 5 6	1 2 3
5 6 7 8 9 10 11	(2) (3) (4) (5) (6) 7 8	7 8 9 10 (11) 12 13	4 5 6 7 (8) 9 10
12 13 14 15 16 (17) 18	9 10 11 12 13 14 15	14 15 16 17 18 19 20	11 12 13 14 15 16 17
19 20 21 22 23 24 25	16 17 18 19 20 21 22	21 22 23 24 (25) 26 27	18 19 20 21 (22) 23 24
26 27 28 29 30 31	23 24 25 26 (27) 28 29	28 29 30 31	25 26 27 28 29 30 31
ROADSHOWS	30 FIRST COLLECTION		
SEPTEMBER	OCTOBER	NOVEMBER	DECEMBER
M T W T F S S	M T W T F S S	M T W T F S S	M T W T F S S
1 2 3 4 (5) 6 7	1 2 (3) 4 5	1 2	1 2 3 4 5 6 7
8 9 10 11 12 13 14	6 7 8 9 10 11 12	3 4 5 6 7 8 9	8 9 10 11 12 13 14
15 16 17 18 (19) 20 21	13 14 15 16 (17) 18 19	10 11 12 13 (14) 15 16	15 16 17 18 19 20 21
22 23 24 25 26 27 28	20 21 22 23 24 25 26	17 18 19 20 21 22 23	22 23 24 25 26 27 28
29 30	27 28 29 30 (31)	24 25 26 27 (28) 29 30	29 30 31
			COMPOST SCHEME CLOSED FOR WINTER

What can I put in my Brown Compost Bin ?

From your Garden.....Grass cuttings, Weeds, Branches, Shrub Prunings,
Windfalls, Leaves, Bark.

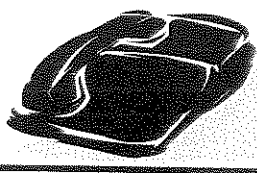
From your Home.....Pet straw / Sawdust, Kitchen towels, Vegetable peelings,
Fruit peelings & cores, Tea bags / Coffee grounds, Eggshells,
Stale bread, Pet and Human hair, Cut flowers,
Salad, uncooked food leftovers (no meat or fish waste)

Top tips for composters

- < Make sure that you keep your bin lid tightly closed
- < If you use your bin, put it out for emptying regardless of how little may be in it
- < NEVER put MEAT, FISH or cooked food waste in your bin
- < Wrap food waste in one sheet of newspaper or kitchen towel to help keep your bin clean

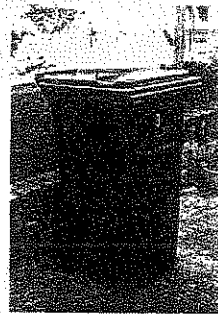
Your Questions Answered

- Q. When will the scheme start? A. On the 27th June 2003
- Q. When will I get my brown bin? A. 2nd - 5th June 2003
- Q. How big will my brown bin be? A. The same size as your existing bin
- Q. Do I put the brown bin out in the same way as the first?
A. Yes, but on an alternate weekly basis
- Q. What happens if I put the wrong bin out for collection?
A. We will not be able to empty it, please check your calendar for the correct compost bin collection day
- Q. What happens while the compost scheme is closed during the winter?
A. Your black bin will be emptied weekly until the scheme resumes in March.
- Q. What happens if I run out of room in my black bin?
A. Please use your local recycling centre, alternatively we will collect 1 normal refuse sack of rubbish alongside your black bin.
- Q. Will the brown bin get messy inside?
A. Not if you wrap any messy waste in one sheet of newspaper before you place it in the bin. A sheet of paper at the base of your bin will help to keep it clean.
- Q. How can I keep my kitchen waste separate?
A. We can supply you with a free kitchen bin if you call the helpline on 01283 595 758
- Q. Should I put all my kitchen waste in the compost bin?
A. Yes, other than cooked food, meat and fish waste
- Q. Must I have a brown bin if I am already composting my own material?
A. No, let us know if you do not want a brown bin. We will then just collect your black bin once a fortnight
- Q. Can I keep to the existing scheme and have my black bin emptied weekly?
A. No, the refuse freighter only visits the compost site and cannot take general rubbish on brown bin collection days.
- Q. What will you do with the material you collect in the brown bins?
A. It will be taken to the SITA composting site at Lount. Compost made at this site is available from B&Q and in bulk. Look out for forthcoming promotions



Helpline 01283 595758

HOW TO KEEP YOUR BIN CLEAN



Some people have problems with their bins becoming smelly and unpleasant – here are some tips for keeping your bin clean.

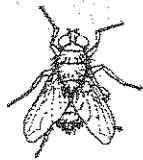
BLACK RUBBISH BIN

- 1) Always wrap up all your rubbish before putting it in the bin. You can re-use old carrier bags to tie up your rubbish. If rubbish is thoroughly wrapped there should be no way for flies to get access to it.
- 2) Always keep your bin lid down. This stops flies as well as cats, dogs, birds and foxes from getting access to your rubbish.
- 3) In summer you can help prevent meat and fish waste from smelling by double wrapping the waste.
- 4) Regularly clean out your wheeled bin to get rid of any residues. You can do this yourself – use an anti-bacterial cleaner to kill off any germs. If you use a cleaning product like Jeyes Fluid, the smell of the cleaner will also deter flies.
- 5) Pay for someone else to clean your bin. For details of registered cleaners in your area please contact the Association of Pressure Washers on 01623 443310
- 6) Purchase a deodorant to kill off any smells in your bin.
- 7) Secure a wheelie bin liner to your bin

BROWN COMPOST BIN

- 1) Try wrapping any kitchen waste (eg vegetable peelings) in a sheet of newspaper to help absorb some of the moisture. Please note that we do not actively want newspaper in the brown bin, but can tolerate a small amount in order to keep your bin clean.
- 2) Always keep your bin lid down. This stops flies as well as cats, dogs, birds and foxes from getting access to your rubbish.
- 3) In summer large quantities of grass clippings can go soggy and smelly. You can help prevent this by trying to layer up clippings with other woody types of garden rubbish.
- 4) You can purchase biodegradable plastic sacks for putting your composting materials in. Many supermarkets sell such bags, or you will shortly be able to purchase them from the Council Offices on Civic Way, Swadlincote (Tel: 01283 595765 for details)
- 5) Purchase a deodorant to kill off any smells in your bin.
- 6) Secure a wheelie bin liner to your bin, ensuring the liner does not come away with the compost waste when emptied

Please note: South Derbyshire District Council has no responsibility for cleaning wheeled bins.



MAGGOTS...



and how to deal with them in your bin

What are maggots?

Maggots are the larva stage of the life cycle of the common house fly. Flies are attracted to food, and can lay up to 150 eggs at a time. These eggs can hatch into maggots within 8 – 48 hours. Depending upon the conditions, maggots can transform into flies after a few days, or several weeks.

Why am I getting maggots in my bin?

You may get maggots on your household rubbish when flies have had contact with your rubbish. If flies settle on your rubbish they may lay eggs which will then hatch out into maggots.

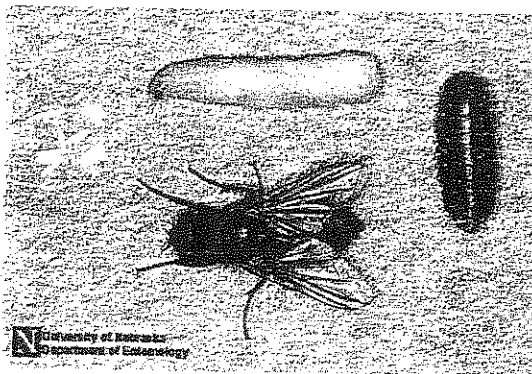
How can I prevent maggots?

If flies don't get contact with the rubbish you will not get maggots.

- 1) Tie up any bags of rubbish tightly – it may help to double wrap rubbish if it is difficult to tie the bags up very tightly.
- 2) Ensure that the lid of your wheeled bin is kept closed
- 3) Make sure you never leave cooked food uncovered. Flies can lay eggs on the food before it goes in the bin.
- 4) If you have a lot of flies in your house try using fly paper, scented fly deterrents, or 'knock down' spray.

How can I get rid of maggots?

- 1) If maggots get into your wheeled bin, most of them should be removed when your bin is emptied.
- 2) Maggots and fly eggs can be killed by using bleach or disinfectants.
- 3) Clean/wash your bin out – you can use professional bin cleaners if you don't want to clean it yourself.
- 4) Try using a cleaning product with a fragrance (eg Jeyes Fluid) which will help deter flies from your bin



**South
Derbyshire**

At the Heart of The National Forest

If you need further advice on South Derbyshire District Council bins, please contact our Waste Management Customer Services Team on 01283 595758.