

DIANA GARDEN, SWADLINCOTE



OCTOBER 2016- Rev C



Contents

Principles & Core Values	4
Wider Context	6
Site Analysis	7
Design Outline	8
Design Features	9
Landscape Concept Proposal	10
Hard Landscape	11
Soft Landscape	12

Introduction: Principles and Core Values



The landscape strategy for Diana Garden in Swadlincote has been developed to:

- Set out the key principles and core values for the space whilst maintaining the integrity of its original aim to commemorate to Diana, Princess of Wales
- Demonstrate an understanding of the space and its links to surrounding buildings and circulation routes
- Demonstrate that key aspects of the public consultation have been considered and incorporated
- Illustrate the visionary aspect of the landscape scheme

The arrangement for the proposed landscaping at Diana Garden has been informed by the following criteria:

- Existing site features: Topography, location of existing services and sub station, trees, memorial elements
- Understanding the site constraints and opportunities
- Consideration of the development setting and its users: Community and stakeholder engagement, links to the leisure centre and pottery museum
- Providing defined boundaries which will make the space safe and useable whilst drawing users in from the surrounding streets
- Ensuring the requirements for landscaping are both appropriate and aesthetic: The space needs to be robust, easily maintainable and cost effective whilst creating a place which is usable, attractive and responds to the community requirements and values.

Community



Destination



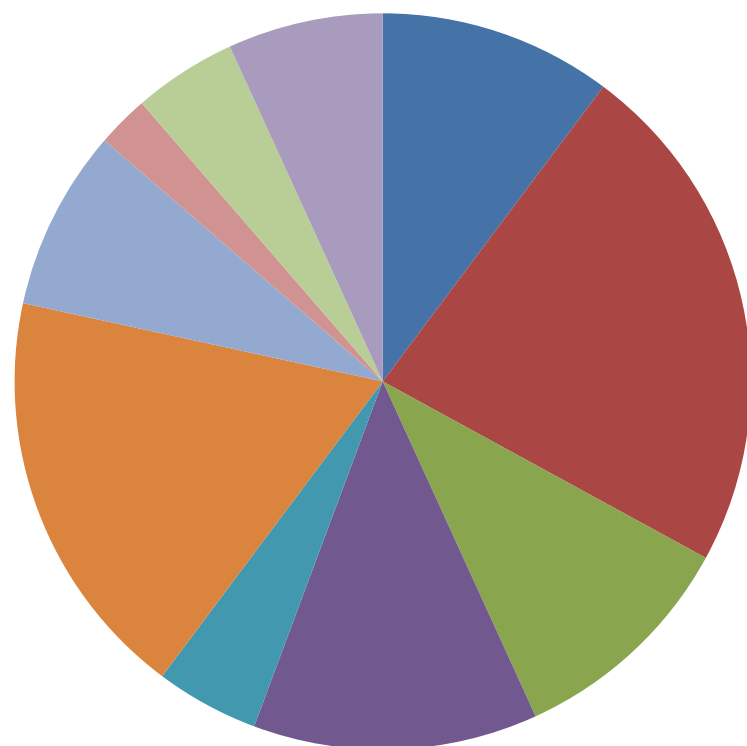
Sensory Elements



The key principle informing landscape strategy of Diana Garden is to facilitate an exemplary public space at the heart of Swadlincote that will draw people in from the town centre and act as a stopping space for activity, enjoyment and social interaction. In particular, the landscape strategy responds to requests gathered from community engagement activities from which three core areas have been developed:

- **COMMUNITY:** A scheme which embraces engagement with the local community in interactive and creative ways in order to enrich the space and promote a sense of belonging
- **DESTINATION:** The creation of an appropriate and lasting identity that connects and reflects its environs and that encourages activity, recreation and events, creating a true sense of place
- **SENSORY ELEMENTS:** A space which engages the senses of all users, drawing people in and encouraging them to stop, sit and interact

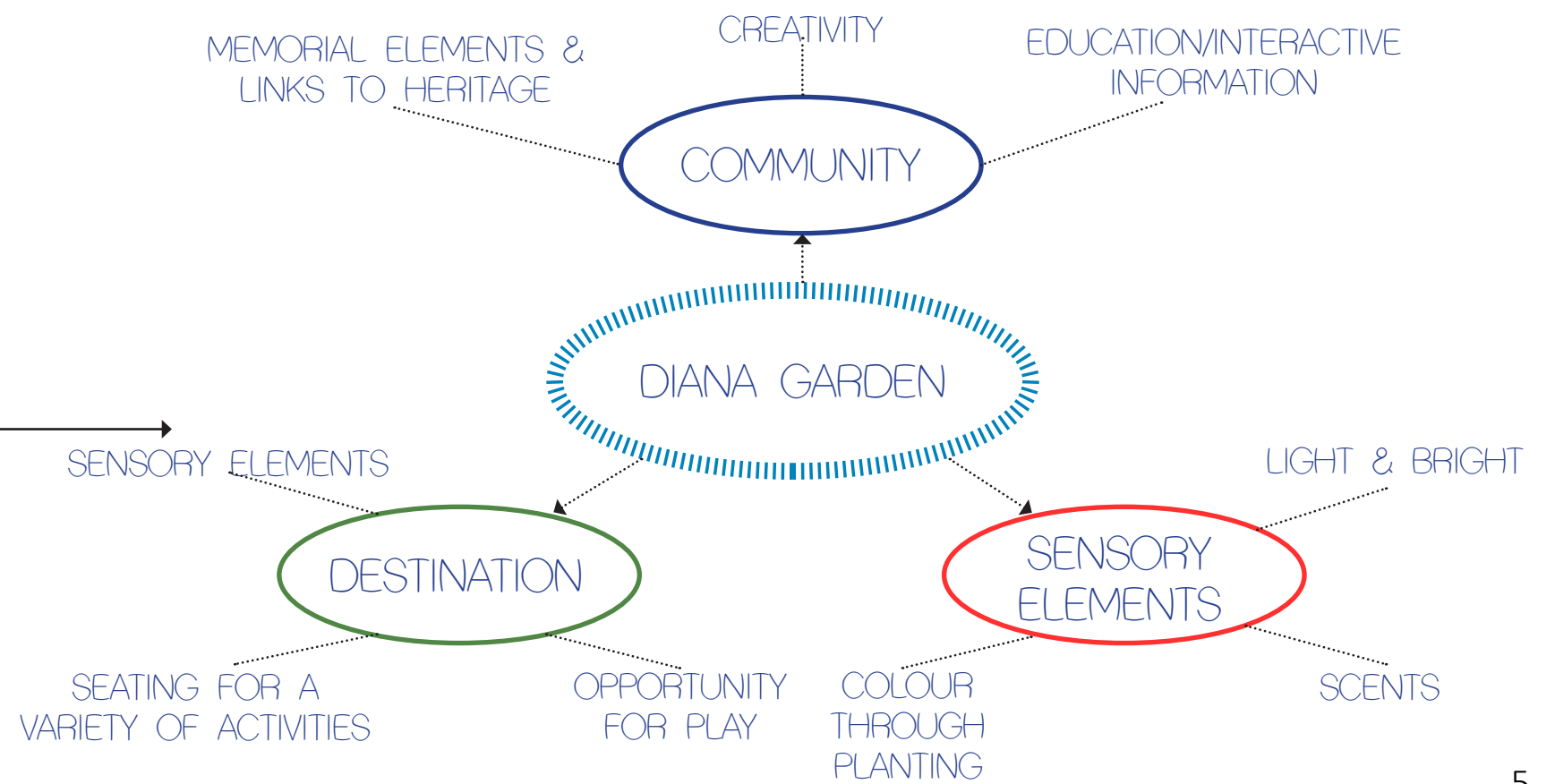
Public Consultation Feedback:



- Safety Fencing
- Benches
- Childrens play area
- sensory garden/trail/paths
- Sculptures/artwork
- Flower garden
- Interactive educational boards
- Windchimes
- Summer House/shelters
- Pond/water feature

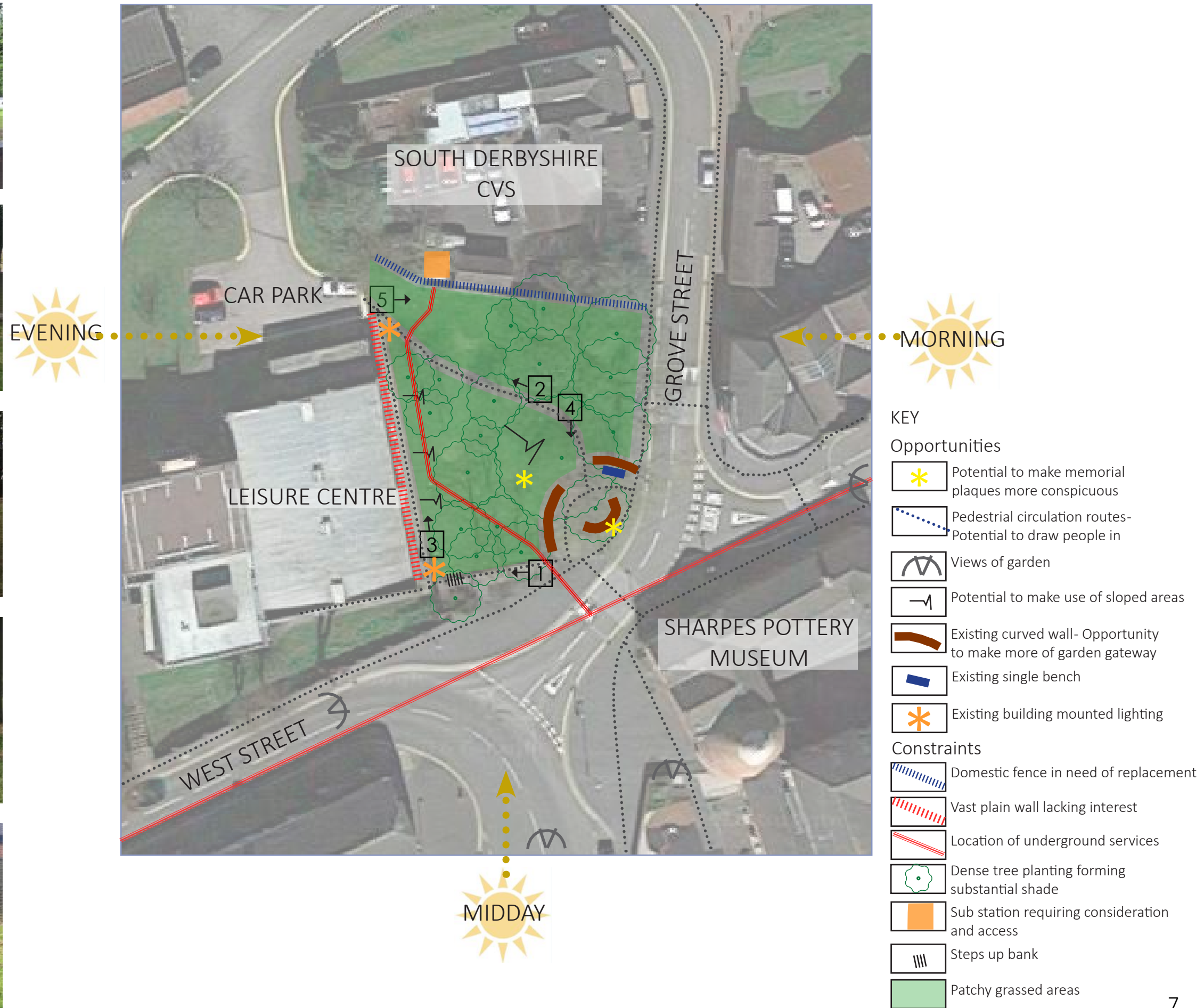
Additional:

- Lighter & brighter
- Consideration of leisure centre wall
- Memorial elements












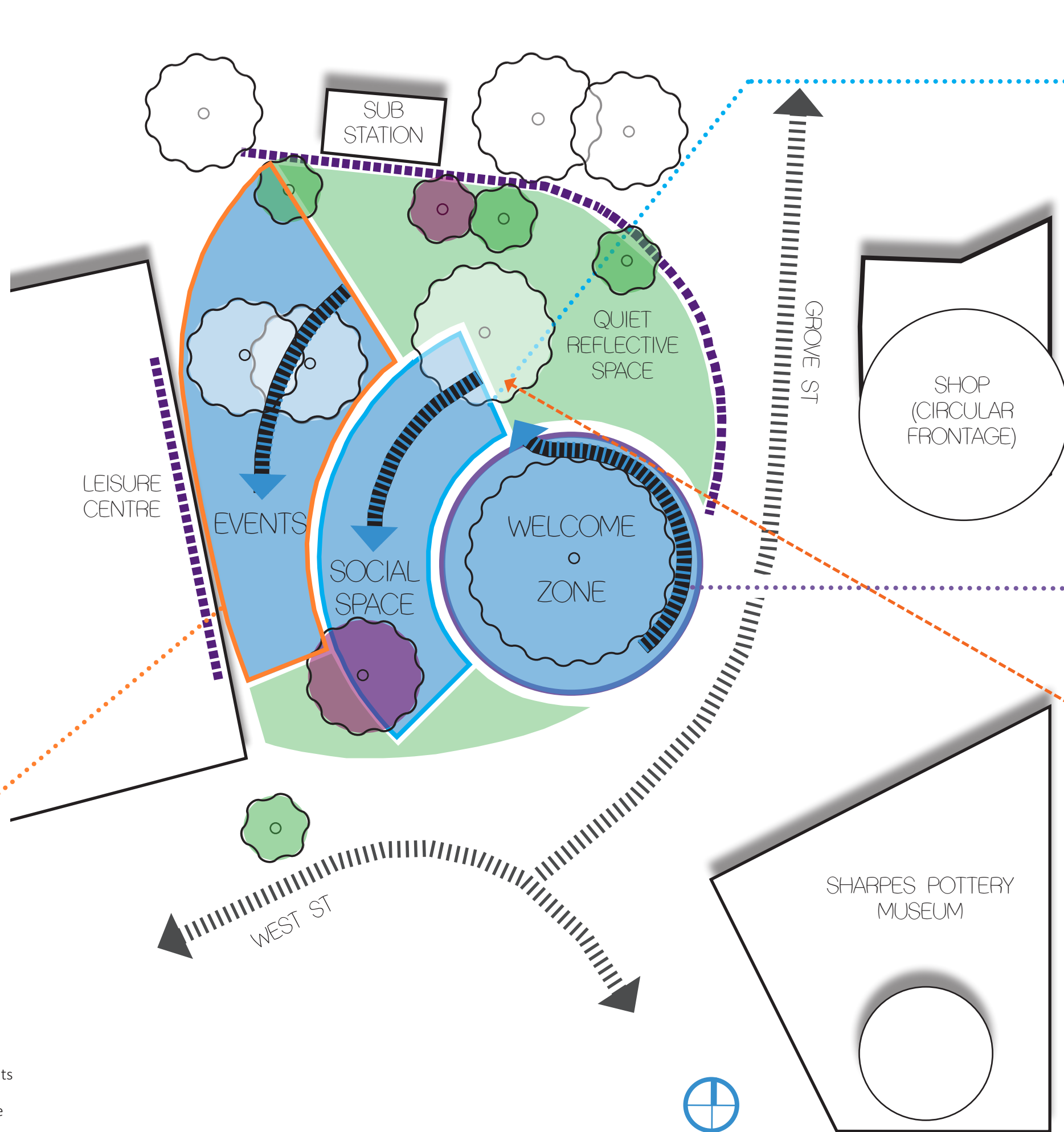


Site Analysis



Design Outline

- KEY**
-  BOUNDARY CONSIDERATION
 -  1 WELCOME ZONE
 -  2 SOCIAL SPACE
 -  3 EVENTS SPACE
 -  INFORMAL GRASSED AREAS
 -  RETAINED & NEW TREE POSITIONS
 -  VEHICULAR ROUTES
 -  KEY CIRCULATION
 -  VISUAL CONNECTION TO HISTORIC CHIMNEYS BEYOND SHARPES POTTERY



- Picnics and gathering space
- Community events
- Potential educational area
- Seating for relaxation and reflection



- Welcoming space with feature tree
- Multi-functional planters with seating
- Sensory planting
- Potential area for artwork and memorial plaques
- Potential for community to get involved with planting maintenance

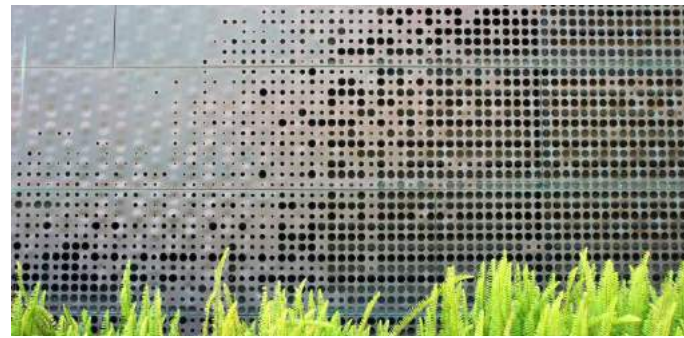


- Mini grass amphitheatre utilising existing topography for small events or performances
- Incorporation of artwork to leisure centre wall
- Can be used as a community outdoor classroom

Design Features

BOUNDARIES

- Incorporating Swadlincote's heritage into boundary art
- Potential to screen leisure centre wall with back-lit laser cut panels
- Subtle boundaries forming a sense of enclosure and safety from the road such as grass mounds and topography changes



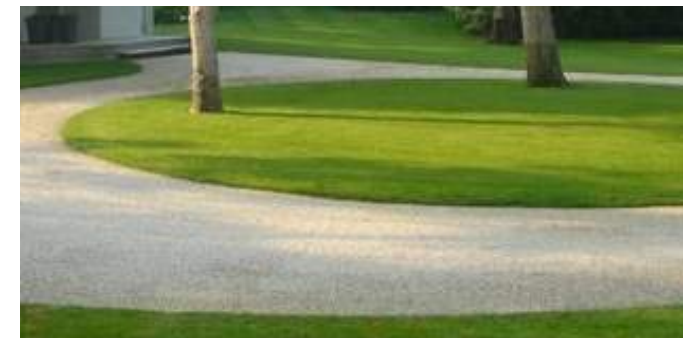
WELCOME ZONE

- Curving seating planters allowing people to flow through the space
- Sensory planting with scent, architectural form and prominence of the colour blue to commemorate Princess Diana
- Incorporation of memorial elements
- Central specimen beech tree sheltering the space



SOCIAL SPACE

- Provision of space for social gatherings and activities
- Flexible seating allowing people to socialise, sit and reflect
- Potential to incorporate interactive educational elements to engage the community and visitors to Swadlincote
- Possibility to connect to electrical outputs for events and seasonal lighting



EVENTS SPACE

- Grass terraces retained with sleepers
- Consideration of underground services and retained trees in the location of terraces
- Incorporation of boulders as natural play elements
- Incorporation of leisure centre wall screening as a backdrop

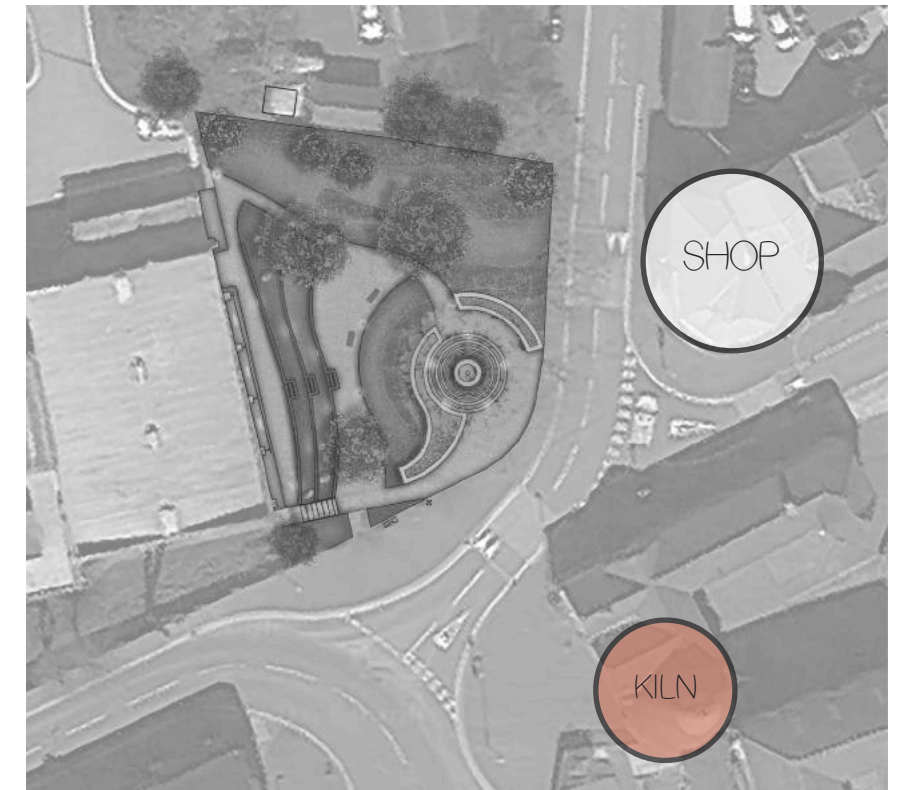


QUIET REFLECTIVE SPACE

- Sweeping mown grass paths
- Swathes of bulb planting flowering turf below existing retained trees
- Grass mounds form subtle boundaries and informal seating spots to the garden for sitting, reflection, play and picnics.



Landscape Concept Proposal



Vision

The landscape proposal strives to respond to the wishes of the Swadlincote community by recognising the local context, embracing the creativity and heritage of the town to create a local destination. It is to encourage a range of users through the incorporation of sensory planting, opportunities to sit, socialise and play.

The proposal includes the removal of a number of trees which will allow more light in, brightening the space and making it more welcoming and useable through the year. The focus of the Welcome Zone is the existing mature beech tree which shelters the space and is encircled by block pavers which are sized in a way to give the illusion of rising out of the ground, reflecting the surrounding pottery kilns and the site's history as a pottery clay hearth. Curving planters also double up as informal seating. Planting is designed for seasonal interest, with sensory elements and a prominence of blue hues to commemorate Princess Diana. This will form a welcoming, colourful space to bring people into the garden.

The existing pathway is resurfaced which flows through to the Social Space with benches enabling users to choose which way they face. A slightly mounded grass area encourages natural play and provides a space for picnics and social gathering.

The events space utilises the existing site topography with a sweeping grass terraces with space for small performances and community events. The leisure centre wall is screened by a designed perforated metal sheet which is to provide a bold backdrop to the space and relates to Swadlincote's heritage and possibly Active Nation's core values.

The quiet reflective area includes mown grass paths through longer wildflower grass and bulbs. This allows users to sit, relax and play informally on the mounds whilst adding seasonal interest and helping to support local wildlife as one of Swadlincote's few green public open spaces.



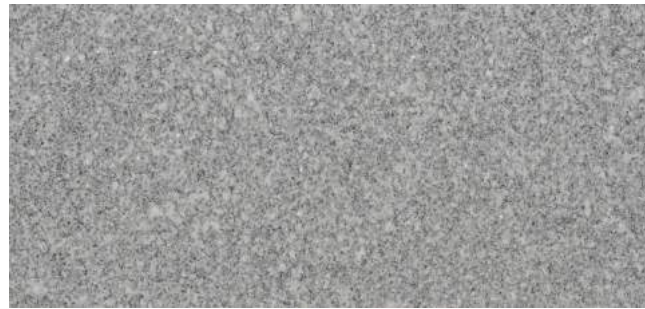
Hard Landscape

The proposed material palette for Diana Garden has been brought together to help form a bright, active space whilst considering the heritage materials found through the town centre: The curving raised planters are to be formed from Staffordshire blue clay bricks which are distinct to Swadlincote. The undulating tops also act as seating with sections of timber as well as smooth grey granite coping. Two tones of granite paving are to be arranged around the focal beech tree to give a spiraling effect, reflecting the town's history and surrounding kilns. Resin bound gravel is to form a curving pathway and gathering spaces through the garden, in the natural colour of sandstone used in the town centre.

Additional furniture may include benches with half backrests, catering for different kinds of users and allowing them to face different ways in the events space. This area, the garden pathways and mini amphitheatre are to be lit with tamper-resistant low level lighting making the garden feel accessible and safe at night. A focal point of the garden is the leisure centre facade which is to be screened with surface mounted perforated metal artwork. This could possibly incorporate a bold image relevant to the town's heritage which will be visible from across the road and draw people into the space, backlit in the evenings. Additionally, a circular bench around the prominent beech tree could be imprinted with artwork which relates to the history of the space and Swadlincote, allowing users to sit and reflect.



Staffordshire blue clay bricks making up curved planters



Grey granite coping to planters
To match heritage granite



Granite block paving circle
Silver grey and mid grey
To match heritage granite



Resin bound gravel
Natural



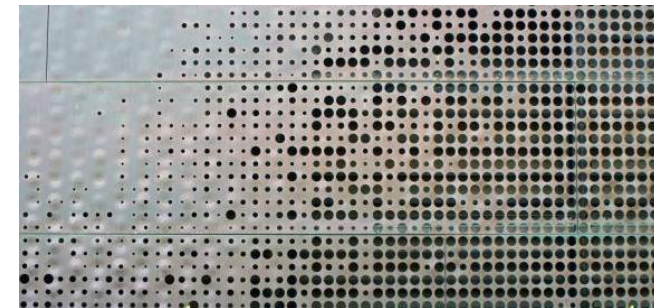
Hardwood seating top
Inlaid into raised planters



'Elements' bench with half back rest
Timber and galvanised steel
Supplied by Furnitubes



Beech tree feature seat



Perforated Metal Screening
Supplied by Graepels or similar



Timber sleepers



Play boulders



Decorative gravel to soakaway



Tamper-resistant lighting

Soft Landscape

A key request from the public consultation was the inclusion of sensory planting in Diana Garden. Along with smaller new tree planting to the CVS boundary, seasonal colour and structure will be provided by shrub and herbaceous planting in the curving raised planters in the Welcome Zone. Users will be able to brush past and sit by scented plants such as *Nepeta* and *Verbena* or admire the contrasting colour palette. A dominance of soft blue tones have been chosen to be reminiscent of Princess Diana, and tie in with the hard landscaping.

Species chosen will help to brighten the space and draw people in but also be beneficial to pollinators. Additionally, species chosen require low maintenance after establishment with the majority being drought tolerant.



Stipa tenuissima



Agapanthus africanus



Rudbeckia fuldiga 'Goldsturm'



Nepeta 'Six Hills Giant'



Perovskia 'Blue Spire'



Veronica longifolia 'Charlotte'



Ceanothus thyrsiflorus var. *repens*



Agastache 'Blue Fortune'



Kniphofia 'Tawny King'



Stachys Byzantina



Verbena bonariensis



Echinops ritro 'Veitch's Blue'

U R B A N
G R E E N

D **DERBYSHIRE**
County Council
Improving life for local people

