

Safer South Derbyshire Partnership Partnership Plan 2008 - 2011



Keeping our Community Safe
Safer South Derbyshire Partnership

'To work together to provide the people of South Derbyshire with a community in which it is safe to live, work, play and visit'

Contents

	Page
<u>Section 1 - Background Information</u>	
➤ Foreword	3
➤ South Derbyshire District	4
➤ Safer South Derbyshire Partnership	5
➤ The Crime and Disorder Act	6
➤ The Derbyshire Structure	7-8
➤ Impact on Previous Strategy	9-10
<u>Section 2 - Informing the Plan</u>	
➤ Links with other Strategies: Local & National	11
➤ Conclusions from Strategic assessments	12-14
➤ Community Engagement	15
<u>Section 3 - Priorities for the partnership</u>	
➤ Priorities for 2008 – 2011	16
➤ Strategy of Action	17-20
➤ Partners role and resources	21-22
<u>Section 4 – Accountability</u>	
➤ Information Sharing	23
➤ Performance Management	23
➤ Risk register/ Risk log	24
➤ Cost of Crime	24
➤ Annual Review	25
➤ Useful Contacts	25

Foreword

Welcome to our new Community Safety Partnership Plan 2008-2011. This plan provides detailed information on how the Partnership has performed over the duration of the previous strategy, highlights the areas that our communities and partners have identified as the priorities to focus on and lists the actions we need to take to achieve our aims.

This plan also shows those targets we have set to reach to deliver our vision and how the Partnership will work together to reaffirm our commitment to making South Derbyshire a safe place in which to live, work play and visit.

This plan sets out our commitment to address the broader challenges and opportunities facing community safety over the next few years.

Everyone has the right to feel safe and all of us have a part to play in making South Derbyshire safer. Increased Community Safety is achieved through joint effort and that means local organisations, communities and individuals pulling together.

This Partnership working happens in many ways. Every time you see the Safer South Derbyshire Partnership logo it is a reminder that local people are working together to combat crime and disorder.

We will do everything in our power to reduce crime, the fear of crime, and to communicate our work to our many communities. We aim to set challenging and sustainable targets in our Plan that can be measured and monitored over the next three years.

We are confident that we can build on the strong foundations that have been established and make real inroads to tackling crime and disorder in South Derbyshire.



**Chair of Safer South Derbyshire Partnership, Councillor
Heather Wheeler**

South Derbyshire District

The District of South Derbyshire covers an area of approximately 34,000 hectares (340 sq km) and has a population of 85,400 (Office for National Statistics 2003 Mid Year Estimates).

To its north, the district is bounded by the city of Derby, the town of Burton upon Trent sits to the west where the Rivers Trent and Dove create the county boundary. On its eastern side South Derbyshire extends from the River Derwent to the east of Derby, south along the Trent and then along the Leicestershire border. The southern boundary is shared with the counties of Leicestershire, Warwickshire and Staffordshire.

The main population and employment centre of the district is Swadlincote, with other sizable locations being Melbourne and the villages of Hilton, Hatton, Repton and Willington.

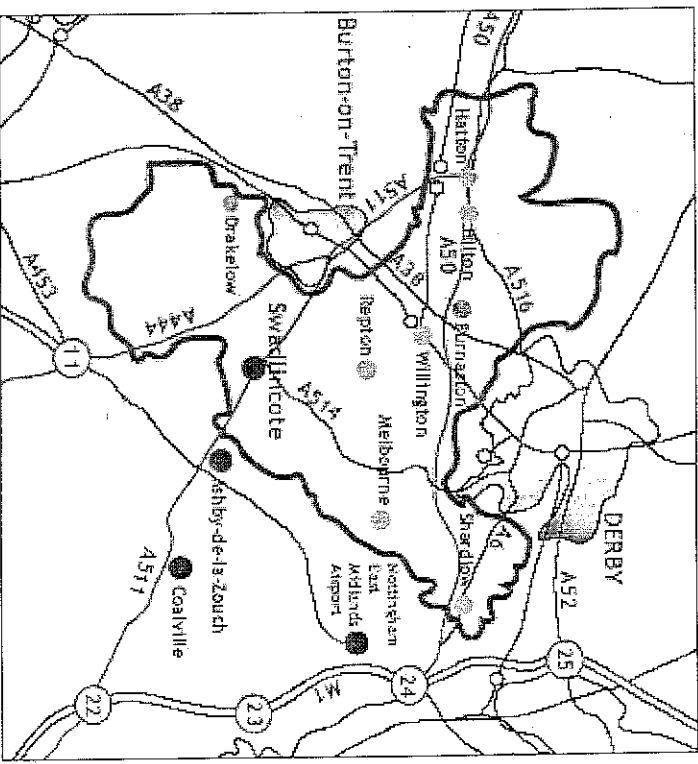
South Derbyshire is the fastest growing district in the county and one of the fastest growing areas nationally. In recent years new developments have taken place in Swadlincote and Hilton and since 1991, 7,800 new homes have been built.

This growth puts pressure on all services. In recent times, like most places house prices have seen significant increases.

There is good access to regional road links with the A50 and A38 each running through the district. Public transport links to rural areas, however, are limited. One third of The National Forest is in South Derbyshire.

According to the 2001 Census, 3% of South Derbyshire's population is from ethnic minority communities, making it the highest in Derbyshire outside of Derby. This census also showed that 5% of the district's population are permanently sick or disabled. At present almost 5,000 people receive Council Tax Benefit. Unemployment is lower than the regional and national levels, standing at 1.3%.

South Derbyshire has a mixture of urban and rural areas, established settlements and new developments.



Map of South Derbyshire District

Safer South Derbyshire Partnership

The Safer South Derbyshire Partnership is the local Crime and Disorder Reduction Partnership (CDRP) for the South Derbyshire District. It is a statutory Partnership that was formed as part of the Crime and Disorder Act in 1998

Much has been achieved with the previous 2005-2008 Strategy as is detailed later, and this new Partnership Plan provides us with a clear framework to monitor and evaluate our progress towards tackling crime and providing protection and reassurance in the communities of South Derbyshire.

The delivery of this Plan will require the enthusiastic and committed support of both the Safer South Derbyshire Partnership and the South Derbyshire community as a whole.

The role of the **Safer South Derbyshire Partnership Support Team** is to facilitate the partnership including the safer neighbourhoods meetings and the local multi agency partnership meetings and to lead on delivering the projects and schemes that are detailed in the strategy section of this document. The support team are

Anti Social Behaviour Officer-	Claire Stewart
Safer Neighbourhoods Officer-	Sarah Dagley
Safer Neighbourhoods Officer-	Phil Marriot
Partnership Sergeant-	Sgt Andy Wright
Safer Communities Manager-	Chris Smith

Below the key Partner agencies are listed along with the regular local Multi-agency meetings that are held

Safer South Derbyshire Statutory Partners:

- South Derbyshire District Council Tel: 01283 595 795
- Derbyshire Constabulary Tel: 0845 123 33 33
- Derbyshire County Council Tel: 0845 6058 058
- Derbyshire Fire and Rescue Tel: 01332 771221
- Derbyshire Police Authority Tel: 01773 573771
- Derbyshire County Primary Care Trust Tel: 01246 231255

Other Partners:

- Community Voluntary Service Tel: 01283 21976
- Derbyshire Probation Tel: 01629 55422
- Derbyshire Drug and Alcohol Action Team Tel: 01629 580000
- Government Office East Midlands Tel: 015971 2759

Existing Multi Agency Partnership Meetings:

- Safer South Derbyshire Strategy Group
- Safer South Derbyshire Performance Management Group
- Safer Neighbourhood Weekly Tasking Meeting
- Safer South Derbyshire Officer Group
- South Derbyshire Domestic Abuse Action Group
- Safer South Derbyshire Partnership Action Group
- South Derbyshire Positive Activities for Young People Group
- South Derbyshire Persistent and Priority Offenders Group
- South Derbyshire Violent Crime, Alcohol and Licensing Group
- South Derbyshire Anti Social Behaviour Strategy Group



The Crime and Disorder Act

The **Crime and Disorder Act 1998**, as amended by the **Police Reform Act 2002** and the **Police and Justice Act 2006**, places legal responsibility on Crime and Disorder Reduction Partnerships (CDRP) to produce a plan, setting out how the partnerships intend to work together to reduce crime, disorder and misuse of drugs in it's local area.

In August 2007, new statutory requirements came into force to help partnerships improve performance, provide clarity around responsibilities and reflect the changes in the delivery and performance landscape. The new requirements include:

Preparing a **strategic assessment** to assist in identifying the priorities that the partnership will focus on.

The production of a **plan** that contains the partnerships strategy for tackling crime, disorder and misuse of drugs, how they will measure performance and the ways in which they will engage with local communities.

Improving the partnerships **visibility and accountability** by holding one or more public meetings during each year so that communities can raise their concerns with senior representatives of the responsible authorities

Hallmarks

The Home Office guidance states that the process that a partnership would use to develop and deliver the Partnership Plan should:

- **Lead and Guide** " which sets out the role of the partnership"
- **Assess** " which sets out the way in which the partnership identifies its priorities to produce a strategic assessment"
- **Plan for action** "which sets out what partnerships will do to produce a partnership plan"
- **Deliver** " which sets out what partnerships will do to deliver the plan and evaluate its effectiveness"

The Home Office are committed to ensuring that Crime and Disorder Reduction Partnerships are the most effective vehicle for securing improvements in the delivery of crime reduction and have identified six Hallmarks of Effective Partnerships:

- Empowered and Effective Leadership
- Visible and Constructive Accountability
- Intelligence-led Business Process
- Effective and Responsive Delivery Structures
- Engaged Communities
- Appropriate Skills and Knowledge

The Home Office are exploring the possibility of introducing a self-evaluation process that would support partnerships as they monitor their own progress towards the Hallmarks.

The Derbyshire Structure

The Local Area Agreement (LAA)

The LAA is an agreement between central government and local government to deliver an agreed set of outcomes for a local area. Agreements usually last for three years and cover a number of thematic areas.

A key feature of agreements is that they pool together a number of existing funding streams provided by central government. The aim is to simplify the way in which some area based funding schemes are distributed and to provide a greater degree of flexibility in how such funds are spent.

The current Local Area Agreement for Derbyshire will cease on 31 March 2008 with new Local Area Agreements being introduced from April 2008

The new Derbyshire Local Area Agreement (LAA) will run from June 2008 until March 2011 and will consist of up to 35 targets and 17 statutory education and early years targets taken from the national indicator set.

Once agreement on the 35 priority indicators has been reached and discussions taken place with Government Office for the East Midlands, work to establish baselines and targets will begin.

Whilst new LAAs will be formally approved by central government in June 2008, the current Derbyshire LAA will cease on 31 March 2008. It is anticipated that key priorities for Derbyshire will be in place by April 2008 to ensure that there is no gap between the current and new LAAs.

The proposed Derbyshire LAA includes the following thematic Boards:

- Safer Communities
- Transformational
- Health and Well Being
- Culture
- Children and Young People
- Sustainable Communities.

The Safer Communities Board (SCB)

The SCB is responsible for taking forward the work of the Safer Communities theme of the Derbyshire Local Area Agreement.

The Safer Communities Board is now well established and aims to fulfil the strategic role set out in the review of the Crime and Disorder Act.

The Safer Communities Board has pooled funding that was previously allocated to the eight district Community Safety Partnerships into one budget. This has enabled resources to be moved from areas where targets in relation to Community Safety are already being met or exceeded to areas where the need is great. The membership of the SCB is shown in the flow diagram below.

The LAA targets in the Safer Communities section are designed to tackle the highest priority issues for Derbyshire. Underneath these targets, the Crime and Disorder Reduction Partnerships, Youth Offending Service and the Drug and Alcohol Action Team have specific targets of their own to directly deliver the overall LAA targets

There are several **key outcome indicators** and targets for the Safer Communities Board to achieve. The high level outcomes for 2007/08 were:

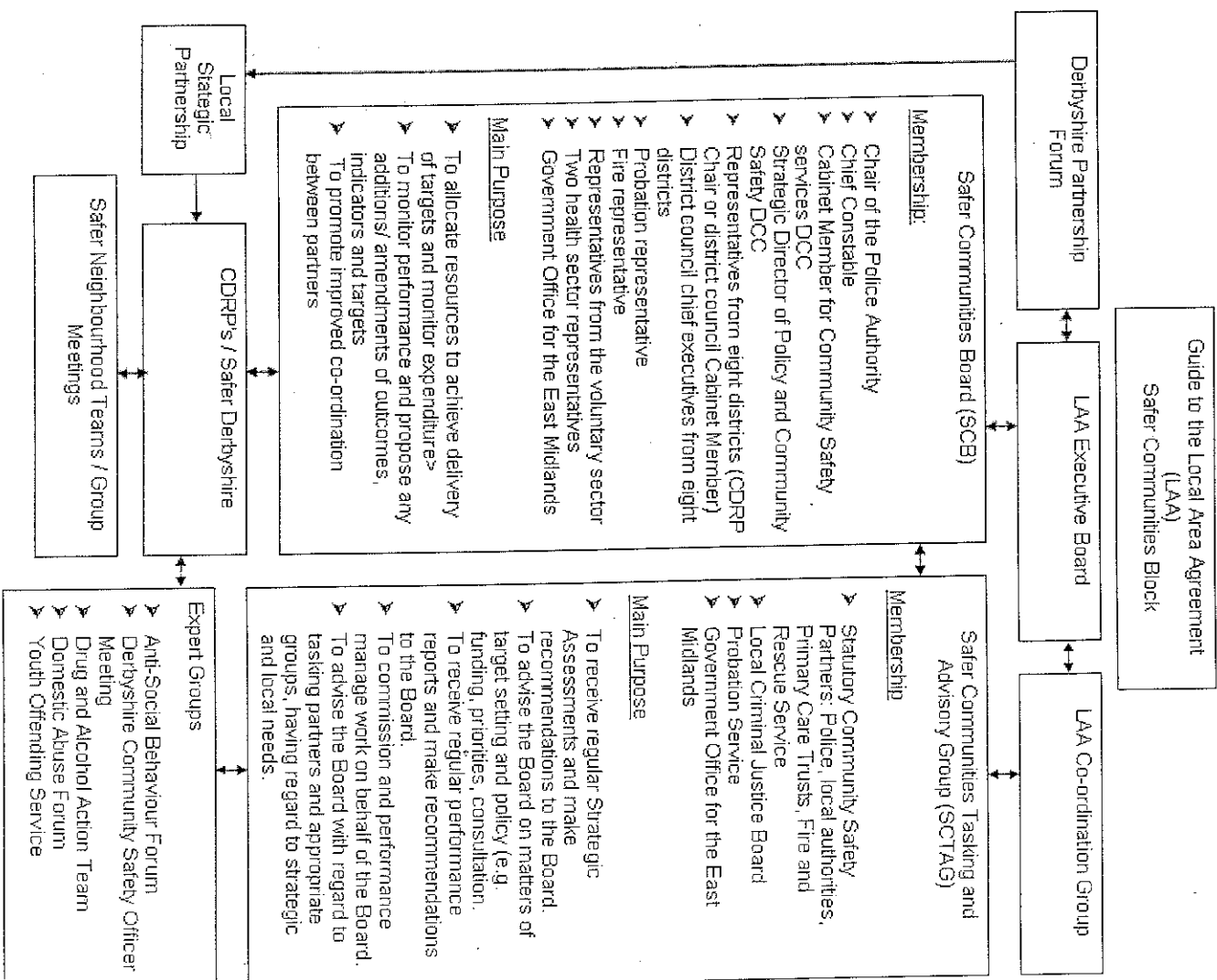
- Reduce crime in line with local CDRP's targets and narrow the gap between the worst performing wards/ neighborhoods and other areas
- Reassure the public, reducing the fear of crime
- Reduce the harm cause by illegal drugs
- Build respect in communities and reduce anti-social behaviour

The key objectives and targets for the 2008-2011 Safer Communities block of the LAA are currently being discussed and will be published in the new Community Safety Agreement, which is due to be published in April 2008.

The agreement will also include countywide priorities for joint working across the county, will set out a joint approach for tackling these priorities, and agree how resources will be deployed to do so.

Once the objectives and targets are set, the Safer Communities Board will liaise with the individual district CDRP and local targets will be agreed that will impact on the overall countywide LAA targets.

The flow chart opposite shows the County wide structure of how Community Safety is delivered within derbyshire.



Impact on Previous Strategy

Table showing South Derbyshire Performance against 2005-08 Targets

Target Crime	Baseline figure 2003/04	Target required by 2007/2008	2005/06 figure	2006/07 figure	*Predicted 2007/08 figure
Domestic Burglary	372	260	262	281	213
Criminal Damage	1140	960	1166	1375	1168
Theft Of Vehicles	234	211	197	197	185
Theft From vehicles	597	478	519	443	477
Violent Crime	952	857	904	910	945
Secondary Fires	217	206	147	123	168**

Boxes shaded green indicates that the 2007/08 target is being met. Those in red indicate that the 2007/08 target is not being met

The predicted figure is calculated based on the figures for the first three quarters of 2007/08.

** The predicted figure for secondary fires is calculated based on the figures for the first two quarters of 2007/08.

Of the 6 targets set in the previous 2005-2008 Strategy, the Safer South Derbyshire Partnership is on target to achieve 4 out of the six set targets, with only criminal damage and violent crime unlikely to be achieved.

The failure to reach the criminal damage and violent crime targets was mirrored across Derbyshire.

As a County, Derbyshire was successful in achieving the Government set Public Service Agreement 2 (PSA2) targets for both vehicle crime and domestic burglary. This resulted in the county receiving a reward of £1.5 million from the government. This reward will be reinvested into tackling crime and disorder across the county over the next two years.

Domestic Burglary

In reaching the domestic burglary target, the partnership was successful in reducing domestic burglary in the District by over 30%.

Some of the successful initiatives that have helped achieve this target have been:

- Continued monitoring of Prolific and Priority Offenders at both the weekly tasking meetings and through the multi agency PPO meetings
- Target hardened the homes of victims of burglaries and elderly and vulnerable residents, through the Safer Homes Scheme.
- Fitted burglar alarms at the homes of victims of domestic burglary, thus reducing the chance of a repeat burglary

Vehicle Crime

The Partnership has been successful in reaching both the Theft of and the theft from vehicle targets over the past 3 years. In doing so it has reduced vehicle crime in the district by over 30%.

Some of the successful initiatives that have impacted on this target include:

- Erecting warning signs in hotspot car parks to remind vehicle owners not to leave items on display in their cars
- Delivering advice leaflets to residents in hotspot areas
- Making environmental improvements to car parks that are hotspot areas for vehicle crime
- Issuing press releases to warn local people of the consequences of leaving items on view inside their vehicles

Secondary Fires

The partnership easily reached the target reduction figure of 5% over the 3 year period. The following initiatives helped achieve the target:

- Derbyshire Fire service has been running a 'fire safe' scheme for children who 'play' with fire
- A scheme has been developed for the more serious or persistent offenders run as a youth offending scheme

Despite not achieving the damage or violent crime targets some of the successful initiatives carried out over the last 3 years include the following:

Criminal Damage;

- Carrying out risk assessments on hotspot locations and making environmental changes.
- Supported the installation of multi use games areas and youth shelters
- Supported Youth Services and SDDC Leisure services in providing diversionary activities
- Used appropriate legislation including Anti Social Behaviour Contracts and Anti Social Behaviour Orders to target individuals who are persistently causing damage and ASB.
- A series of 'clean up' projects were carried out across Swadlincote, Woodville and Newhall using funding secured through the LAA; these included erecting new fencing along Rinkway passage, removing graffiti from Swadlincote Town Centre, improved lighting at Newhall cemetery, removal of derelict garage sites and painting the railings at Swadlincote bus station. These projects were carried out to improve the environment of the areas and to reduce the potentially for criminal damage.

Violent Crime

- Set up a town centre based Pub Watch scheme involving local licensees
- Set up a Sanctuary Scheme project whereby victims of domestic abuse have their properties secured.
- Carried out campaigns to reduce the underage consumption of alcohol. These include promoting Challenge 21 and a proxy purchase campaign.
- Supporting Next step, the local support service for victims of domestic abuse

Links with Other Strategies

The work, aims and priorities of the Safer South Derbyshire Partnership are in line with a range of key strategic documents.

These can be both national strategies developed by central government or more local documents, which are developed by partners in Derbyshire and South Derbyshire. These Strategies include:

Local Strategies

- South Derbyshire Community Strategy 2005-2010
- SDDC Corporate Plan 2006 -2009
- Derbyshire Constabulary Policing Plan 2008-2009
- Derbyshire Fire & Rescue Service Area Community Strategy and Action Plan
- DAAT Alcohol Harm Reduction Strategy for Derbyshire 2007-09
- Derbyshire Local Area Agreement 2008-2011
- Derbyshire Community Safety Agreement 2008-2011
- Derbyshire Independent Living Strategy: Preventative Home Support for Older People
- SDDC Sport, Recreation and Physical Activity strategy
- The All Derbyshire (including Derby City) Mental Health Promotion Strategy 2002 to 2010
- Derbyshire Primary Care Trust Local Strategy 2007-2009

National Strategies

- Cutting Crime a New Partnership 2008-2011
- Home office; Action Plan for Tackling Violence 2008-2011
- National Alcohol Strategy (Safe. Sensible. Social)
- Strategic Plan for Reducing Re-offending 2008-2011
- Criminal Justice System Strategic Plan 2008 - 2011
- The Children and Young People's Plan
- Every Child Matters Delivery Plan
- National Drugs Strategy
- Home office: Respect Strategy

Some of the above mentioned documents will contain Action plans and statutory responsibilities for individual partner agencies, some will provide detail on available and new legislation and others will give examples of successful initiatives and offer best practice ideas on tackling various crime and disorder issues.

Conclusions from Strategic assessments

Areas of concern and emerging priorities

From the information provided in the Strategic Assessment it is recommended that the CDRP prioritise those crimes, which continue to be of concern and where targets remain unmet, these include: **anti social behaviour (ASB) and criminal damage, violent crime and fear of crime**. However other crime types such as domestic burglary and vehicle crime will continue to be maintained despite improved figures over the past three years with target reductions being met.

Special attention should also be paid to Area 4 (Central Area) where 33% of all crime in South Derbyshire occurred. The key crimes in the areas are criminal damage, violent crime, and burglary not dwelling. Area 5 (Newhall and Midway) has the second highest crime rates in the district and attention should also be paid to this area, especially with regards to damage and anti social behaviour

The results from the 'Every Child Matters' survey suggested that the problem with underage drinking needs to be a priority, with over 40% of Derbyshire pupils in years 8/9 and 10/11 admitting that they drank alcohol at least once a week.

The Survey stated that the most popular place that both boys and girls purchased alcohol from was off licenses. The most popular place for young people to consume alcohol was at home or at a friends house and when they drank at home 56% of Derbyshire pupils said it was always done with their parents knowledge.

Data collected from the South Derbyshire District Council Safer Neighbourhood Wardens also suggests that the Safer South Derbyshire partnership should prioritise underage drinking and damage, particularly in and around parks, car parks and fast food takeaways.

The area where the most Acceptable Behaviour Contracts have been issued over the past 3 years is Newhall with 8. This area is also the top area for criminal damage and as such should be considered a priority area for damage and anti social behaviour.

Police statistical data over the past 12 months highlights the following local hotspots that need to be prioritised:

- Criminal Damage in Newhall & Stanton (Area 5) and in Swadlincote, Woodville and Church Gresley (Area 4).
- Violent crime: Newhall and Stanton (Area 5), Swadlincote & Church Gresley (Area 4)
- Domestic burglary: Hatton (Area 1) and Stenson Fields (Area2)
- Vehicle crime: Aston (Area 3)

This statistical data again shows that Areas 4 and 5 need to be considered priority areas, especially for violent crime, damage anti social behaviour.

Focus also needs to be placed upon burglary in Hatton and Stenson Fields and vehicle crime in Aston.

Locally Identified Issues

Through the consultation carried out with local residents and the local Safer Neighbourhood Teams at the Safer Neighbourhood meetings the following priorities have been identified in each Area:

Area 1: Hilton - Hatton – Burnaston –Egginton –Foston

- Tackle anti social behaviour and nuisance motorcycles around Hilton particularly Hilton Village Hall and the Mease
- Reduce vehicle crime in Hilton

Area 2: Willington – Findern – Repton - Bretby - Stenson Fields

- Tackle anti social behaviour in Stenson Fields- particularly Fox Close & Pilgrims Way
- Tackle anti social behaviour in Findern- particularly around Hillside
- Tackle anti social behaviour in Willington – particularly around Twyford Road
- Tackle nuisance motorcycles in Stenson Fields
- To monitor closely vehicle crime at the new A50 service station

Area 3: Melbourne - Aston - Weston - Shardlow - Thulston – Elvaston

- Reduce vehicle crime in Aston and Shardlow
- Reduce vehicle crime at Welcome Break service station on A50 in Aston
- Tackle ASB in Melbourne – around Town Centre on Friday & Saturday nights

Area 4: Swadlincote – Woodville - Church Gresley – Hartshorne

- Reduce criminal damage and tackle anti social behaviour in and around Swadlincote Town Centre, Including Morrisons Car Park & Rinkway Passage
- Reduce violent crime in Church Gresley – particularly Regent Street
- Tackle anti social behaviour and nuisance motorcycles in local parks (Maurice Lea, Woodlands, Eureka)
- Tackle ASB in Goseley area
- Reduce criminal damage in Woodville – particularly Woodville Rec, Donnington Drive, The DCC Youth Services building on Moira Lane

Area 5: Newhall - Midway

- Tackle anti social behaviour and damage at Meadow Lane and Pine Grove, Newhall
- Reduce violent crime in Newhall and Stanton
- Tackle anti social behaviour in Newhall – particularly Chrysanthemum Court, Oversetts Road and Newhall Park
- Tackle nuisance motorcycles in Newhall and Midway

Area 6: Overseal - Linton - Netherseal – Coton – Walton - Rosliston

- Tackle anti social behaviour in Castle Gresley – particularly Bass's Crescent & Linton Road
- Tackle anti social behaviour at Overseal Village Hall

Areas for Development

The Safer South Derbyshire Partnership has identified the following as areas to develop further in order to improve the effectiveness of the partnership:

- Structure of anti social behaviour team needs to be further developed, to include a quarterly strategy meeting
- Continue to build relationship with Primary Care Trust, further work is required especially around underage Drinking and Alcohol Harm Reduction agenda
- Look to develop local Alcohol Harm Reduction Group to co-ordinate local delivery of the Alcohol Harm Reduction Strategy
- Develop work with schools around damage and reducing anti social behaviour
- Work with DCC Youth Services, South Derbyshire District Council Leisure Dept and local schools to promote positive news stories on young people to reduce fear of crime and negative perspective associated with young people
- Work with Community Voluntary Service to develop community groups through Safer Neighbourhood meetings to deliver youth activities and intergeneration projects
- Use local publications to promote success stories in order to reduce fear of crime

The Partnership will also review emerging issues relating to cross boarder or regional issues, which may necessitate sharing intelligence, and working together to resolve possible problems including the use of shared resources.

The Partnership will take due account of the Assessment of Policing and Community Safety (APACS), which will provide assessment of performance of each local area against the national community safety objectives including the Governments Public Service Agreement objectives.

This information should provide for effective negotiation of appropriate LAA targets for the Local Strategic Partnership

It is also recognised by the Partnership that there are other emerging priorities on the crime and disorder agenda that may, in the coming months need to be brought in as priorities, these include serious crime, terrorism and priority fires and fatalities. The Partnership's action plans will be regularly reviewed and where deemed necessary updated with the appropriate actions built in.



Community Engagement

Safer Neighbourhoods

The Safer South Derbyshire Partnership has greatly improved its links and how it consults with the local community over the past two years.

In April 2006 the Partnership made the decision to implement Local Safer Neighbourhood meetings in each of the 6 identified Safer Neighbourhood areas.

Each meeting is held quarterly. The meetings change venue each time so as many villages as possible hold meetings.

As well as the Partnership Support team the Police Safer Neighbourhood Officers are regular attendees as are local Parish and District Councillors and a variety of other Partner agencies including the District Council Neighbourhood Wardens, DCC Youth Services and Community Voluntary Service.

As well as an open question and answer session where the members of the public can raise local issues and ask questions of the Partnership, there is also regular workshops held where the community and the officers present produce an action plan to tackle the issues raised.

The priorities identified via the workshops are detailed on Page 13 under locally identified issues

At each meeting the Partnership updates the community on progress made on the action plan and feedbacks any successes. Any new Issues can be added to the action plan, so it remains a working document throughout the year.

Each Safer Neighbourhood area is also given an annual funding pot of £5,000 to spend on local community based crime reduction projects; these projects can come from any local group or organisation and can vary from increasing security to local community buildings to providing diversionary activities for the local young people.

Some of the successful projects funded over the past two years through the Safer Neighbourhoods grant scheme include:

- Over 50's Forum Intergeneration IT project
- Hilton Teenage Action Group Graffiti workshop
- Security measures for the Mease Community Sports Pavilion
- Equipment for Milton Village Self Defence Class
- Security Measures to Church Gresley Bowls Club
- Lighting at Maurice Lea Park Multi Use Games Area
- Contribution to Newhall and Midway football tournament.

In total over 30 local community based projects have been funded or partially funded over the two years that Safer Neighbourhoods meetings have been running.

Other Consultation methods

As well as through the Safer Neighbourhoods meetings the Partnership also listens to the community via the following:

- Youth Forum
- Citizens Panel Questionnaire
- District Council Area meetings
- Area Neighbourhood watch meetings

Priorities for 2008 - 2011

Using the information provided in the Strategic Assessment and through consultation with local people and the Safer Neighbourhood teams at the 6 area Safer Neighbourhoods Meetings four priorities have been identified that the Safer South Derbyshire Partnership will focus on for the next three years. These are:

Violent Crime	Criminal Damage and ASB	Fear of Crime	Acquisitive Crime
----------------------	--------------------------------	----------------------	--------------------------

The Strategy of Action for impacting on the above priorities is detailed on the pages below. Also detailed within the Strategy of Action is how the new national indicators that have been selected by the Safer Communities block of the Local Area Agreement fit with these 4 priorities.

Other Local Area Agreement Safer Communities Indicators

As well as the 4 local priorities that the Safer South Derbyshire Partnership has identified there are other County-wide priorities that will be monitored through the Safer Communities Block of the Local Area Agreement. Whilst the Safer South Derbyshire Partnership will not be directly responsible for the delivery of these priorities and their associated targets, it is possible that there will be some local delivery by one or more of the partner agencies or a requirement for the Safer South Derbyshire Partnership to work with the responsible agency in delivering local action. These countywide priorities are:

Road traffic accidents	Primary Fires and related fatalities and non fatal casualties
<p>Links to National Indicators LAA (SCB)</p> <p>NI 47- People killed or seriously Injured on road traffic accident.</p> <p>The Safer South Derbyshire Partnership will work towards this indicator in Partnership with the County Wide Road Safety Partnership</p>	<p>Links to National Indicators LAA (SCB)</p> <p>NI 49- Number of Primary Fires and related fatalities and non fatal casualties.</p> <p>The Fire Service, one of the statutory partners within the SSDP will be the accountable agency in delivering actions towards this indicator</p>

Violent Crime

Strategy of Action

Objectives

- Reduce repeat incidents of domestic abuse
- Reduce alcohol related incidents of Violent Crime in hotspot areas (i.e. Town Centre, Newhall and Midway, Church Gresley)
- Improve education on alcohol misuse, to both young people and parents of young people

Continuing Actions

- To deliver and promote the Sanctuary Scheme project (Domestic Abuse prevention Scheme) in Partnership with CVS and Next step
- To deliver Alcohol reduction Campaigns especially at Christmas time
- Continue to facilitate the local Domestic Abuse Action team (DAAT) to deliver and promote domestic abuse reduction initiatives and improve support to victims
- Use available legislation to target Hotspot areas and licence premises i.e.: Section 27.

New Actions

- To form a local Violence, Alcohol and Licensing (VAL) Group that meets on a regular basis
- To support the formation of a local Multi Agency Risk Assessment Conference Group
- Work with PCT and other partners to develop an education package to warn parents of the health risks associated with underage drinking
- Investigate ways of improving Alcohol Support Services in the District

Links to National Indicators

- LAA (SCB)**
- NI 32- Repeat incidents of Domestic Abuse
 - NI 20- Assault with injury Crime rate
 - NI 39- Alcohol harm related hospital admission rates

Non LAA

- NI 15- Serious violent crime rate

Targets

LAA Targets
TBC

Other Partnership Targets

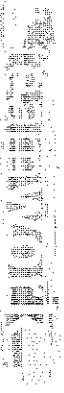
- Reduce rates of Violent crime by ?? % from ?? to ?? March 2011

Criminal Damage and Anti Social Behaviour (ASB)

Objectives
<ul style="list-style-type: none"> ➤ Reduce consumption of alcohol by underage young people ➤ Reduce incidents of environmental crime eg: Graffiti, Litter, Fly tipping ➤ Reduce incidents of Criminal Damage in Hotspot areas (Woodville, Newhall, Swadlincote Town Centre, Parks) ➤ Improve the multi agency response to ASB across the District

Continuing Actions
<ul style="list-style-type: none"> ➤ Continue to use park patrols during school holidays in urban park areas ➤ To use available legislation to focus on individuals who persistently commit ASB and/or Criminal damage ➤ To work with Trading Standards and the Police to reduce the consumption of alcohol by young people through a variety of initiatives inc: Test Purchase Operations and alcohol testing strips <p>New Actions</p> <ul style="list-style-type: none"> ➤ Joint commissioning of youth engagement facilities and diversionary activities through the Positive Activities for Young People Group ➤ To make environment improvements to areas seen as criminal damage and ASB hotspots ➤ To improve the communication between the ASB team and Safer Neighbourhoods teams through ad-hoc multi agency hotspot meetings ➤ To look at the feasibility of increasing the numbers of Neighbourhood Wardens on patrol within the District ➤ To look at the feasibility of establishing park watch scheme/s within the urban core

Links to National Indicators
<p>LAA (SCB)</p> <ul style="list-style-type: none"> ➤ NI 27- Understanding of local concerns about ASB and crime by the local council and Police <p>Non LAA</p> <ul style="list-style-type: none"> ➤ NI 110- Young peoples participation in positive activities ➤ NI 195- Improved Street and environment (Graffiti, Litter) <p>Targets</p> <p>LAA Targets</p> <ul style="list-style-type: none"> ➤ TBC <p>Other Partnership Targets</p> <ul style="list-style-type: none"> ➤ Reduce rates of Criminal Damage by ??% from ?? to ?? by March 2011 ➤ Reduce number of Police Calls for service for ASB from ?? to ?? by March 2011



Fear of Crime and Perception of Crime

Objectives

- Reduce the fear of crime associated with being outside in the neighbourhood at night
- Reduce the fear of crime associated with groups of young people
- Increase public confidence in Police and local council in relation to dealing with Anti Social behaviour

Continuing Actions

- Continue to employ a media officer to ensure that all success stories continue to be publicised
- Continue the quarterly Safer Neighbourhoods meetings to liaise and consult with local people and produce and distribute local Safer Neighbourhood newsletters
- Continue to promote Neighbourhood Watch, to develop new schemes and support existing ones
- Continue to deliver the Liberation Day event in order to reduce fear of crime amongst elderly people

New Actions

- Look to publicise more stories on young people through liaison with DCC Youth Services and SDDC Leisure Dept
- Set up more intergeneration projects after the success of the Findern IT Intergeneration project.

Links to National Indicators

- LAA (SCB)**
- NI 27 - Understanding of local concerns about ASB and crime by the local council and Police

Non LAA

- NI 17 Perception of ASB
- NI 24 Satisfaction with the way police and local council deal with ASB

Targets

LAA Targets
TBC

Other Partnership Targets
TBC

Acquisitive Crime

Objectives

- To Improve treatment services for Drug users
- Continue to prioritise the Prolific and Priority Offender Scheme and
- To maintain the existing level of Domestic Burglary
- To maintain the existing level of Vehicle Crime

Continuing Actions

- Continue to deliver and promote the Safer Homes Burglary prevention scheme and explore ways of mainstreaming it.
- Burglary Campaign over Christmas / Dark nights time
- Launch Easter time Shed Breaks publicity Campaign and promo with Shed Alarms
- Use of Burglary Packs in Hotspot areas

- Use Vehicle crime leaflets, Signs and environ improvements in Hotspot vehicle crime car parks

New Actions

- To work with partner agencies to look at ways to improve the availability of accommodation for Prolific and Priority Offenders (PPO's)
- To work with local community groups and partner agencies to educate them on how to reduce the risk of becoming a victim of vehicle crime or burglary
- To explore the feasibility of setting up a local Business Watch scheme in Swadlincote Town Centre

Links to National Indicators

- LAA (SCB)**
- NI 40- Drug Users in effective Treatment
 - NI 16- Serious Acquisitive Crime Rate
 - NI 18- Adult re-offending rates for those under probation supervision

Targets

- LAA Targets**
- TBC

Other Partnership Targets

- Maintain existing level of Domestic Burglary to 2011 (No more than?? Incidents per year)
- Maintain existing level of Vehicle crime to 2011 (No more than?? Incidents per year)

Partners Roles and resources

The Table below highlights the objectives that each statutory partner will impact on. More detailed information on each partners' contribution is available in a separate document (Partners Roles and Resources).

<u>Violent Crime</u>	South Derbyshire District Council	Derbyshire Fire and Rescue	Derbyshire Police	Derbyshire County Council	Primary Care Trust
Domestic abuse	☆		☆	☆	☆
Alcohol related incidents of Violent Crime in hotspot areas	☆		☆	☆	
Improve education on alcohol misuse		☆	☆	☆	☆
<u>ASB and Criminal Damage</u>	South Derbyshire District Council	Derbyshire Fire and Rescue	Derbyshire Police	Derbyshire County Council	Primary Care Trust
Reduce consumption of alcohol by underage young people	☆		☆	☆	☆
Reduce incidents of environmental crime	☆	☆	☆	☆	
Reduce incidents of Criminal Damage	☆	☆	☆	☆	

<u>Fear of Crime and Perception of Crime</u>	South Derbyshire District Council	Derbyshire Fire and Rescue	Derbyshire Police	Derbyshire County Council	Primary Care Trust
Fear of crime associated with being outside in the neighbourhood at night	☆		☆	☆	☆
Fear of crime associated with groups of young people	☆		☆	☆	☆
Increase public confidence in Police and local council in dealing with ASB	☆		☆	☆	
<u>Acquisitive crime</u>	South Derbyshire District Council	Derbyshire Fire and Rescue	Derbyshire Police	Derbyshire County Council	Primary Care Trust
Improve treatment services for Drug Users				☆	☆
Continue to Prioritise Prolific and Priority Offender Scheme	☆		☆	☆	
Reduce Domestic Burglary			☆	☆	
Reduce Vehicle Crime			☆	☆	

Information Sharing / Performance Management

Information Sharing

The Safer South Derbyshire Partnership is committed to working in partnership with its partner agencies who are involved in reducing crime and disorder and who provide a service to the public.

It is recognised that the exchange of relevant information between such bodies is fundamental to achieving an effective partnership.

The District Council together with other key partners including the Police, Fire Service and PCT have all signed up to the Countywide Community Safety Information Sharing Protocol, This sets out a framework for information sharing across the respective organisations.

An overarching Countywide Protocol is also being developed through the Derbyshire Partnership Forum

This protocol commits the partner organisations to draw up local information sharing agreements to meet specific business needs in an agreed format.

Performance Management

In order to ensure that the Partnership is making sufficient progress towards the targets set out in this document it needs to be subjected to regular performance monitoring

The partnership will be monitored at a local level, a countywide level and nationally. This will be done through the following;

Locally – The Safer South Derbyshire Partnership holds regular **Performance Management Group (PMG)** meeting, which analyse performance against targets, progress towards delivering the action plans, identifies new hotspot areas and tasks the local action groups with looking at actions to tackle these hotspots. The PMG meeting is held once a quarter and is attended by representatives from the Police, District Council, County Council and the Partnership Support team.

Also at a local level the new action plans will be input into the updated COR Vu Countywide performance management system and will be regularly updated when any progress is made. This system will be capable of producing updated progress reports that will be presented at the PMG and Strategy Group meetings.

County Wide- Countywide performance is monitored through the SCB and SCTAG groups. Each Partnership is monitored on its performance towards achieving the LAA targets and is tasked with giving regular updates on progress made towards countywide initiatives

Nationally- The Partnership will also be Performance Monitored at a National level through the Assessment of Policing and Community Safety (APACS). This will provide the assessment of performance of each local area against the nation wide community safety objectives including the Governments Public Service Agreement.

It is also expected that the Home office will introduce a self-evaluation process that would support partnerships as they monitor their own progress towards the Hallmarks of Effective Partnership working

Risk Assessment / Cost of Crime

Risk Assessment

All projects and initiatives that are developed or funded by the Safer South Derbyshire partnership will be subject to a risk assessment at application stage.

The Partnership application forms will ask the applicant to consider any risks and issues that could influence or impact on the delivery of the project. The applicant will also be asked to identify the seriousness of the risks, the likelihood that the risk will happen, what can be done to minimise the risk and how the potential risk will be monitored

As well as minimising risk to the delivery of individual projects and schemes there are also other risks that need to be considered that may affect the delivery of the Partnership as a whole; these include:

- Temporary contracts of Support Team Staff
- Non-engagement with key Partner agencies
- Uncertainty of Funding

All of the above are a continuous concern for all Community Safety Partnerships in the County and not just in South Derbyshire.

The Safer South Derbyshire Partnership continually monitors the situation with regards to the above risks and plans have been put in place so that it is prepared for any possible eventuality.

Cost Of Crime / Value for money

The home office paper 'economic and social costs of Crime 2003/04' gives estimate costs for each main crime type.

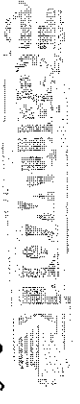
Using the average cost of crime figures provided in that document and based on the number of incidents of crime in 2007 (see page 9) we can estimate the cost of crime for each crime type in South Derbyshire during 2007 as:

Crime Type	Average Cost (per crime)	Total Cost
Domestic Burglary	£3,268	£696,084
Criminal Damage	£866	£1,011,488
Theft of Vehicle	£4,138	£765,530
Theft from Vehicle	£858	£409,266
Violent Crime	£10,407	£9,834,615

The costs above include amongst other things, the cost of physical and emotional impact on victims, value of property stolen/ damaged, cost to the Criminal Justice Board and the cost to the Health service.

As the average cost per crime is known, it is possible to carry out value for money exercise for each major project delivered or funded by the Safer South Derbyshire Partnership.

In order to make this common practice a value for money question will be added into the Partnership funding applications, which will ask the applicant/ project lead to work out the cost of the Project against the estimated savings that could be made based on the projected crime reduction outcome.



Annual Review

This plan will be subject to an annual review each year of its 3-year life span. The first annual review will be completed by the end of March 2009.

Useful Contacts

- Crime Stoppers: 0800 555 111
- Police Non emergency Number: 0845 123 33 33
- SDDC Anti Social Behaviour: 01283 595 795
- Victim Support: 01332 349 956
- Next Step (Domestic Abuse Support): 01283 229 854

If you would like to find out more about the Safer South Derbyshire Partnership please contact:

Safer Communities Manager
 Safer South Derbyshire Partnership
 South Derbyshire District Council
 Civic Way
 Swadlincote
 DE11 0AH

Tel: 01283 595 924
 Email: community.safety@south-derbyshire.gov.uk