

# **The English Indices of Deprivation 2010**

## **Detailed Analysis - Derbyshire County**



## **Contents**

### **Introduction and Background**

### **Section 1: Key Findings for the English Indices of Deprivation 2010**

### **Section 2: Index of Multiple Deprivation 2010**

Overall Score of the Index of Multiple Deprivation 2010

Income Deprivation Domain

Income Deprivation Affecting Children Index

Income Deprivation Affecting Older People Index

Employment Deprivation Domain

Health Deprivation and Disability Domain

Education, Skills and Training Deprivation Domain

Barriers to Housing and Services Domain

Crime Domain

Living Environment Deprivation Domain

Urban - Rural Analysis

### **Section 3: District Summary Measures**

### **Section 4: Change Over Time**

### **Appendices**

Appendix A – List of Indicators used to compile each of the domains

Appendix B – Tables 1 to 10 showing Derbyshire LSOAs in the most deprived 20% nationally for the overall IMD, domains and supplementary indices

Appendix C – Tables 11 to 20 showing Derbyshire LSOAs in the least deprived 10% nationally for the overall IMD, domains and supplementary indices

Appendix D – Tables 21 to 23 showing more detailed sub-domain analysis

Appendix E – Table 24 shows the rankings for each of the six local authority summary measures for 2010 and 2007.

## Introduction and Background

The English Indices of Deprivation 2010 (ID 2010) are the Government's official measure of multiple deprivation at small area level and provide a consistent measure of deprivation across England. The 2010 Indices build on previous deprivation publications and allow comparison to be made with the Indices of Deprivation 2004 (ID 2004) and Indices of Deprivation 2007 (ID 2007).

This report sets out the key findings for Derbyshire from the ID 2010 and outlines the relative change in deprivation that has occurred across the county over time.

The Indices of Deprivation 2010 are published for the same geographical levels that were used for the 2007 and 2004 Indices. The main geography used is Lower layer Super Output Area (LSOA). There are 32,482 such areas across England including 486 in Derbyshire (LSOAs contain an average 1,500 people). Each LSOA in England can be ranked according to their Index of Multiple Deprivation Score. This provides an indication of relative deprivation across small areas and allows the most and least deprived areas across England to be identified.

The ID 2010 consist of two sets of deprivation measures: the Index of Multiple Deprivation (IMD 2010) published at LSOA level and six summary measures published at local authority district level.

The IMD 2010 combines a total of 38 indicators (see Appendix A for the full list) from seven topic areas (domains) to arrive at an overall deprivation score and rank for each LSOA in England (the LSOA with a rank of 1 is the most deprived and 32,482 the least deprived). The seven domains are:

- Income Deprivation;
- Employment Deprivation;
- Health Deprivation and Disability;
- Education, Skills and Training Deprivation;
- Barriers to Housing and Services;
- Crime; and
- Living Environment Deprivation.

Scores and rankings at LSOA level are also available for each of the individual topic areas listed above, along with two supplementary indices; Income Deprivation Affecting Children and Income Deprivation Affecting Older People.

The scores and ranks for the LSOAs are used to construct six summary measures at district level, they are as follows:

- Average Rank – This is calculated by taking the individual ranks for each LSOA within a district and averaging them.
- Average Score – This is calculated by taking the individual scores for each LSOA within a district and averaging them.
- Income and Employment Scales – These two measures provide an indication of the proportions of people experiencing income and employment deprivation.
- Local Concentration – This measures ‘hotspots’ of deprivation. A district with many individual LSOAs in the deprivation high ranks will appear in the top ranks here.
- Extent – This measure shows how widespread high levels of deprivation are in a district.

When using the data from the ID 2010, the following cautions should be taken note of:

- An area itself is not deprived; it is the circumstances of the people living in an area that affect the deprivation score. However, not every person who lives in a deprived area will be deprived, in the same way that some deprived people may live in the least deprived of areas.
- Where comparisons are made between the ID 2010 and ID 2007 and ID 2004 it is only possible to comment on relative rather than absolute change in deprivation levels. This is due to the slight variances in the construction of the three sets of indices.
- The LSOA geography used to calculate the IMD is better for highlighting deprivation in urban areas, where there are higher concentrations of people. This does not mean that there is no deprivation in rural areas; it just means that people living in largely rural areas are less likely to be highlighted by the IMD.

For further details on the ID 2010 please visit the Department for Communities and Local Government website via the following link:

<http://www.communities.gov.uk/publications/corporate/statistics/indices2010?view=Standard>

The report is structured into four sections, as follows;

- Section 1** Provides an overview of the key findings.
- Section 2** Forms the main body of the report and contains analysis of the IMD scores and rankings for the overall score and for each of the domains and supplementary indices. Following the approach of the national level reports, analysis within this section largely concentrates on areas that fall within the most deprived 20% nationally.

**Section 3** Examines the results of the six summary measures produced at local authority level. Again the national benchmark is adopted to analyse the data. This looks at the number of districts that fall into the 'most deprived 50' nationally on one or more of the six summary measures.

**Section 4** Looks at the relative change in deprivation over time.

**Appendices** Provides a list of indicators involved in each domain and tables showing Derbyshire LSOAs in the top 20% and bottom 10% nationally for the overall IMD, domains and supplementary indices; tables showing some more detailed sub-domain analysis; and the local authority summary measures for 2010 and 2007.

Throughout the report, there is reference to the term national deciles. Deciles divide the 32,482 LSOAs in England into 10 equal groups, with the most deprived 10% of LSOAs being in decile 1 and the least deprived 10% of LSOAs being in decile 10.

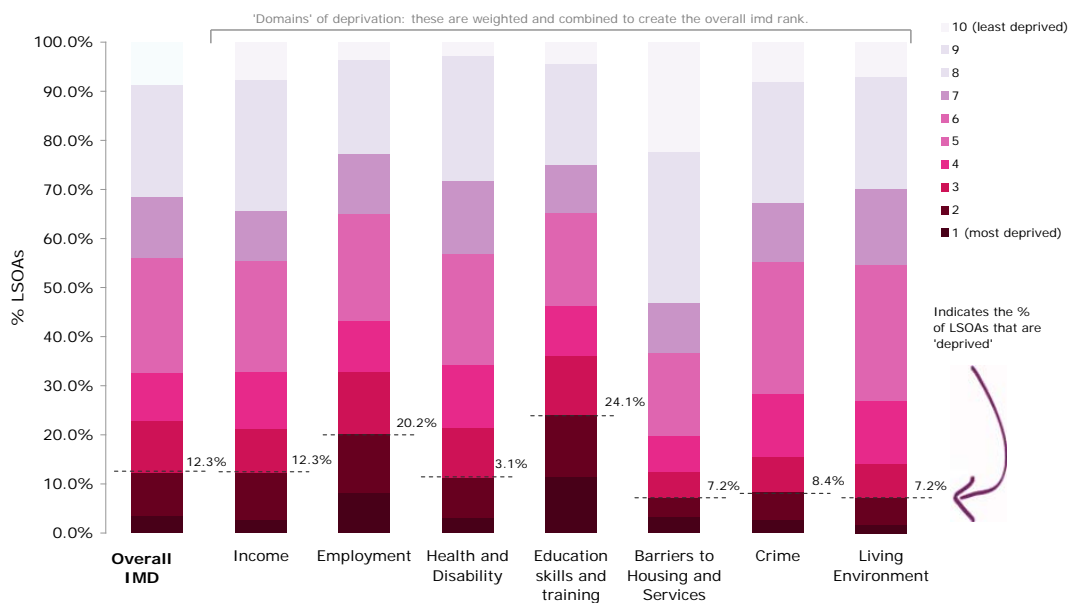
The information contained within the document is also on the Derbyshire Observatory website at:

<http://observatory.derbyshire.gov.uk/>

## Section 1: Key Findings for the English Indices of Deprivation 2010

- The most deprived LSOA within Derbyshire covers part of the Cotmanhay area which lies within the Ilkeston North ward. It ranks in the top 3% most deprived areas in England.
- 17 LSOAs in Derbyshire fall within the 10% most deprived areas in England. Bolsover and Chesterfield contain 10 of these LSOAs, Erewash contains three, High Peak contains two of these LSOAs, and North East Derbyshire contains one of these, as does Amber Valley.
- 60 LSOAs in Derbyshire fall within the 20% most deprived in England. Each Derbyshire district contains at least one such area although nearly half lie in just two districts (Chesterfield and Bolsover).
- Derbyshire scores worst on the Education, Skills and Training domain. As shown on the chart below, nearly a quarter of all LSOAs (117) in Derbyshire are within the 20% most deprived areas in England on this domain.

### Proportion of LSOAs by decile for overall IMD and domains



\*Deprived\* refers to areas in deciles 1 and 2 (most deprived 20% in England)

- Employment is Derbyshire's second most deprived domain in terms of the number of LSOAs in the most deprived 20% nationally. Around 10% (44,200) of women aged 18 to 59 and men aged 18 to 64 in Derbyshire are employment deprived. 98 of all LSOAs in Derbyshire fall within the most deprived 20% nationally on this domain. All districts contain at least one such area.
- Approximately 12% (93,000) of people in Derbyshire are income deprived. There are 60 LSOAs within Derbyshire that fall within the

20% most deprived areas across England on this domain. All of Derbyshire's districts contain one such area.

- Nearly 23,000 (around 16%) children live in families that are income deprived in the county.
- Approximately 16% (30,600) of older people in Derbyshire are income deprived.
- The pattern of results for the Barriers to Housing and Services domain is vastly different from that of the other domains. Of the 16 highest ranking LSOAs in Derbyshire, 11 are within Derbyshire Dales. This is likely to reflect the high house prices and long distances to travel to key services in rural parts of the county.
- Just two of Derbyshire's eight districts (Bolsover and Chesterfield) fall into the 'most deprived 50' across England on one or more of the six district level summary measures.
- Bolsover has the greatest proportion (27.5%) of its LSOAs in the most deprived 20% in England. This is closely followed by Chesterfield where a quarter of the LSOAs fall into the most deprived 20% in England. In addition, on all of the six local authority summary measures, Bolsover followed by Chesterfield are ranked the most deprived of Derbyshire's districts.
- There has been little change in the number of LSOAs in Derbyshire falling into the worst 10% across England. In ID 2010 17 LSOAs fall within the worst 10% of areas compared to 16 in ID 2007. There is one less LSOA in the 20% most deprived in England compared to ID 2007.
- The number of LSOAs in the least deprived 10% of LSOAs in England has increased from 30 in ID 2007 to 42 in ID 2010.
- Six of the eight districts in the county have shown a net improvement in their rankings across the six district summary measures between ID 2007 and ID 2010. Chesterfield shows the greatest improvement, followed by North East Derbyshire, Bolsover, South Derbyshire, Derbyshire Dales, and Amber Valley.
- Erewash and High Peak have shown a net worsening over this time.
- The Health Deprivation and Disability domain shows the greatest relative improvement in average rankings between ID 2007 and ID 2010. This improvement is reflected in LSOA level analysis, with there being 29 fewer LSOAs in the most deprived 20% nationally on this domain in ID 2010 compared with ID 2007.
- There has been a significant worsening on the Crime domain compared with ID 2007.



## **Section 2: Index of Multiple Deprivation 2010**

### **Overall Score of the Index of Multiple Deprivation 2010**

The overall measure of deprivation in the IMD 2010 is constructed by combining data from each of the seven domains, each of which measures a different aspect of deprivation, as previously noted. The combined measure gives an overall deprivation score and rank for each LSOA in England.

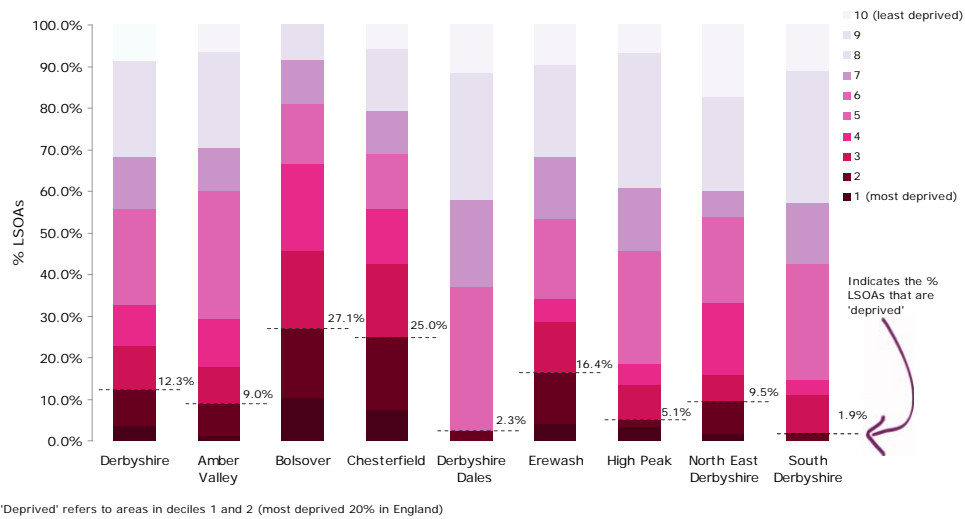
Before the seven domains are combined they are weighted to reflect the relative importance of different aspects of deprivation. The weightings also reflect the variation in the reliability of the statistics used to construct the indices. The seven domains with their associated weightings are as follows:

- Income Deprivation: 22.5%
- Employment Deprivation: 22.5%
- Health Deprivation and Disability: 13.5%
- Education, Skills and Training Deprivation: 13.5%
- Barriers to Housing and Services: 9.3%
- Crime: 9.3%
- Living Environment Deprivation: 9.3%.

For the purpose of this report LSOAs are regarded as 'deprived' if they fall within the most deprived 20% nationally. The key findings from analysis of the overall IMD score are:

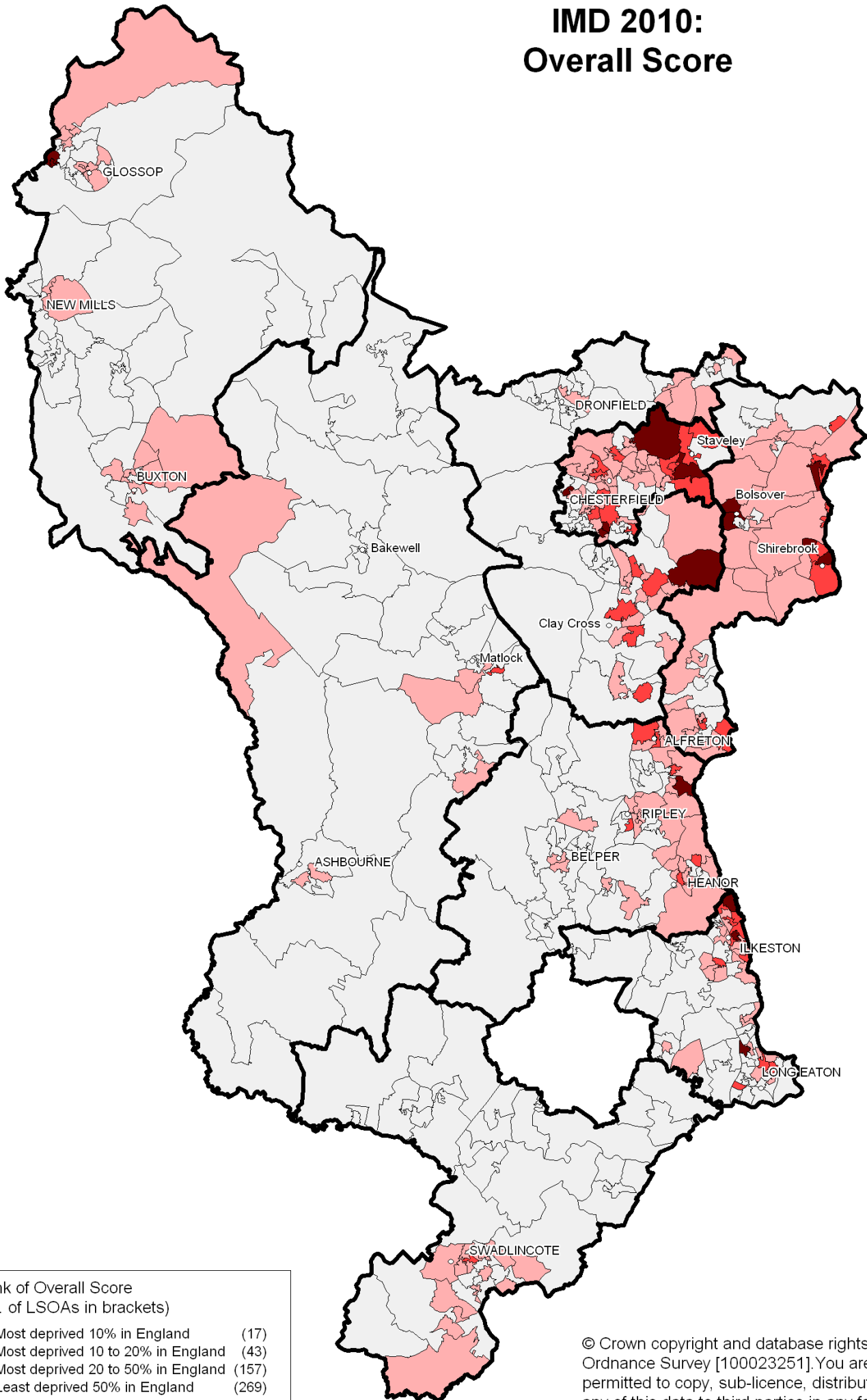
- A total of 60 (12.3%) LSOAs in Derbyshire fall within the most deprived 20% nationally (see Appendix B, Table 1 for more detail). However, this varies considerably, as shown in the chart that follows, with Bolsover and Chesterfield showing the greatest levels of deprivation, with at least a quarter of their LSOAs being 'deprived'.
- There are 17 LSOAs in Derbyshire in the most deprived 10% nationally. Approximately 25,800 people live within these LSOAs, representing around 3% of the county's population. However, it is important to remember that not all people living in these LSOAs will be deprived.

### Proportion of LSOAs by national decile - Derbyshire and local authority districts



- The map opposite shows the pattern of deprivation at LSOA level across the county. Bolsover and Chesterfield contain the majority of Derbyshire's LSOAs in the most deprived 10% nationally, followed by Erewash (parts of Ilkeston and Long Eaton), High Peak (parts of Gamesley) and then North East Derbyshire (part of Holmewood and Heath) and Amber Valley (part of Ironville and Riddings).
- The most deprived LSOA within Derbyshire lies within the Ilkeston North ward and covers part of the Cotmanhay area. It ranks in the top 3% most deprived areas in England; this remains unchanged since the IMD 2007.
- A total of 42 LSOAs fall within the least deprived 10% in England on this domain (see Appendix C, Table 11 for more detail), over a quarter of which fall within North East Derbyshire.
- Compared with ID 2007 there is little change at the most deprived end of the rankings in Derbyshire, with there being one more LSOA in the top 10% most deprived in England. Of the 16 LSOAs in the top 10% most deprived in ID 2007, 14 remain in the category in ID 2010.
- Additionally, there is one less LSOA in the top 20% most deprived in the ID 2010 compared to ID 2007 and 7 fewer than in ID 2004. Also, the number of LSOAs in the least deprived 10% in England has increased from 30 in ID 2007 to 42 in 2010, maintaining the upward trend from 2004.

# IMD 2010: Overall Score



Rank of Overall Score  
(No. of LSOAs in brackets)

- Most deprived 10% in England (17)
- Most deprived 10 to 20% in England (43)
- Most deprived 20 to 50% in England (157)
- Least deprived 50% in England (269)

© Crown copyright and database rights [2011].  
Ordnance Survey [100023251]. You are not  
permitted to copy, sub-licence, distribute or sell  
any of this data to third parties in any form.

## Income Deprivation Domain

This domain provides a count of the total population experiencing deprivation in relation to low income and includes both those out-of-work and those that are in work but who have low earnings. This is calculated by combining data for five indicator areas: Income Support; Jobseekers Allowance; Pension Credit; Child Tax Credit, and asylum seeker support. This domain and the Employment domain are the only two where the scores published are based on actual numbers of the population.

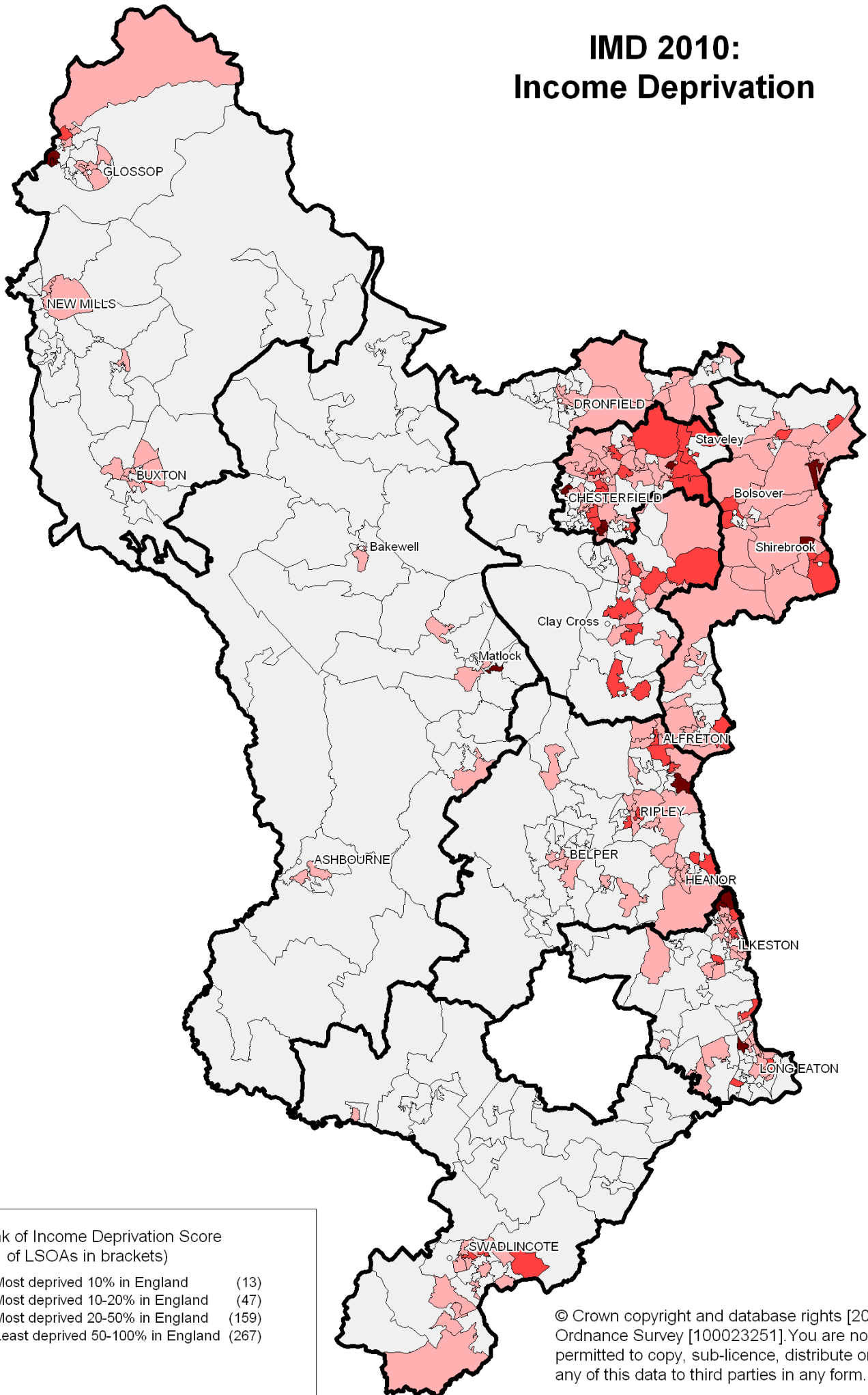
Two supplementary indices are also produced as subsets of the Income Deprivation domain:

- Income Deprivation Affecting Children Index (IDACI) which covers the proportion of children aged 0 to 15 living in income deprived households; and
- Income Deprivation Affecting Older People Index (IDAOPI) which covers adults aged 60 and over living in low income households.

The key findings from analysis of this domain are:

- An estimated 92,800 people across Derbyshire are classed as income deprived, representing around 12% of the county's total population.
- A total of 60 (12.3%) Derbyshire LSOAs fall into the 20% most deprived LSOAs nationally on this domain (see Appendix B, Table 2 for more detail) where approximately 26,100 (roughly 3%) of the county's total population are estimated to be income deprived. 13 of the 60 LSOAs fall within the 10% most deprived LSOAs across England, where around 6,700 (approximately 1%) of Derbyshire's population are estimated to be income deprived.
- As shown in the map opposite the pattern of deprivation at LSOA level varies considerably across the county. Of the LSOAs within the most deprived 10% of areas, over half of these are within Chesterfield and Erewash (parts of Ilkeston and Long Eaton), followed by Bolsover (parts of Shirebrook) and High Peak (parts of Gamesley), then Amber Valley (part of Ironville and Riddings) and Derbyshire Dales (part of Matlock).
- A total of 37 LSOAs fall into the least deprived 10% across England (see Appendix C, Table 12 for more detail). Whilst this includes areas from all eight districts the majority fall within North East Derbyshire (parts of Wingerworth and Dronfield), South Derbyshire (parts of Hilton and Repton), High Peak (parts of Simmondly and Hadfield) and Erewash (parts of Wilsthorpe and Abbotsford).
- Considering change over time, the 13 LSOAs in the most deprived 10% nationally in ID 2010 is slightly worse compared with ID 2007 (when the figure was 11) but a slight improvement compared with ID 2004 (when the figure was 16).

# IMD 2010: Income Deprivation



Rank of Income Deprivation Score  
(No. of LSOAs in brackets)

- Most deprived 10% in England (13)
- Most deprived 10-20% in England (47)
- Most deprived 20-50% in England (159)
- Least deprived 50-100% in England (267)

© Crown copyright and database rights [2011].  
Ordnance Survey [100023251]. You are not  
permitted to copy, sub-licence, distribute or sell  
any of this data to third parties in any form.

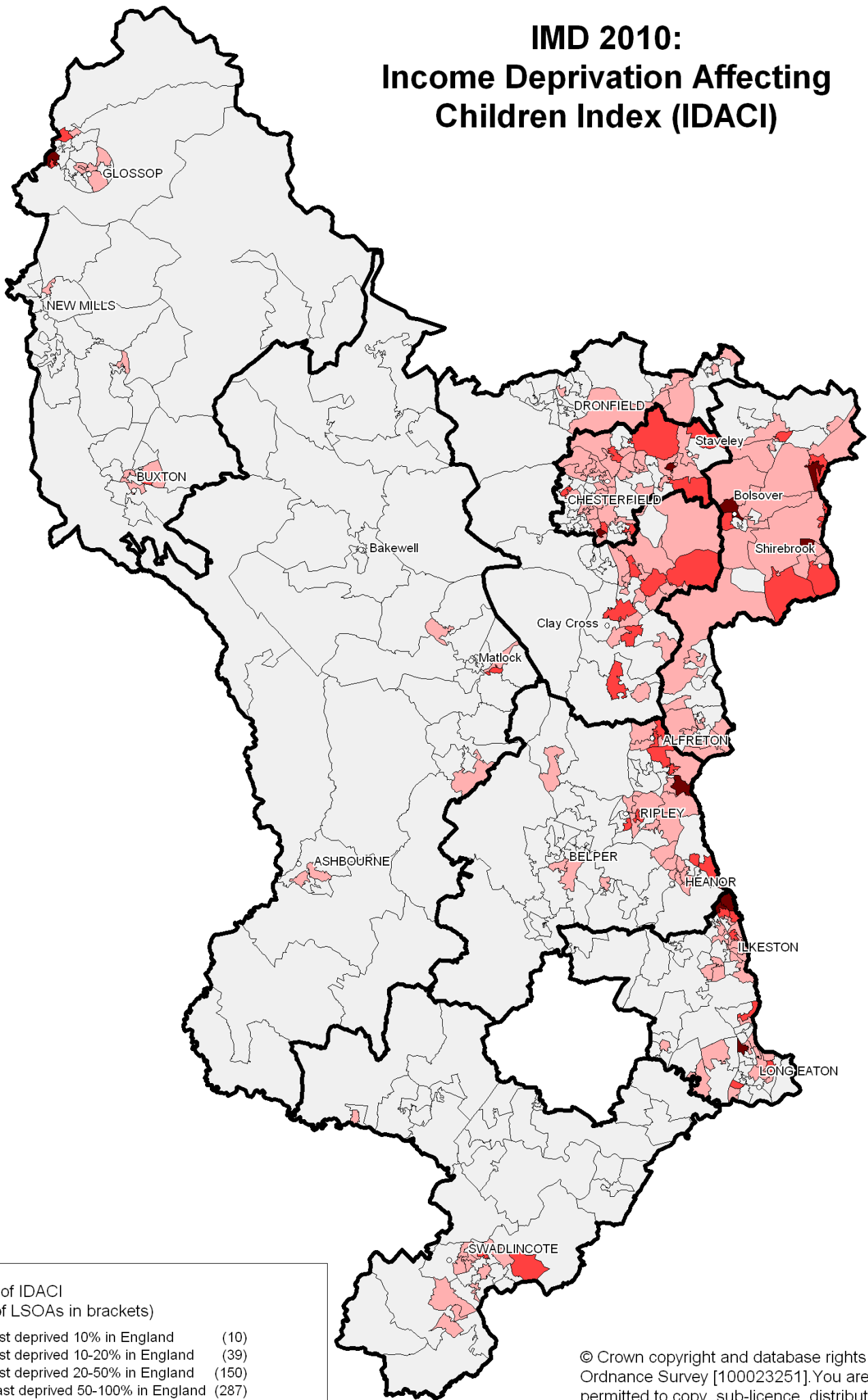
## Income Deprivation Affecting Children Index

A supplementary index to the Income Deprivation domain has been constructed to identify the proportion of children aged 0 to 15 years living in income-deprived households. This is defined as either families receiving Income Support or income-based Jobseeker's Allowance or Pension Credit (Guarantee), or those not in receipt of these benefits but in receipt of Child Tax Credit with an equivalised income (excluding housing benefits) below 60% of the national median before housing costs.

The key findings from analysis of this index are:

- An estimated 22,900 children live in income deprived households in Derbyshire representing around 17% of all children in the county.
- A total of 49 (10.1%) of Derbyshire's LSOAs fall within the most deprived 20% nationally on this index (see Appendix B, Table 3 for more detail) where around 7,000 (approximately 5%) of the county's children aged 0 to 15 are estimated to live in income deprived families. 10 of the 49 LSOAs fall within the 10% most deprived areas in England where approximately 1,900 (around 1%) of children in the county are estimated to live in income deprived families.
- The map opposite shows the pattern of deprivation at LSOA level across the county. Of the LSOAs within the most deprived 10% of areas, over half are within Bolsover (parts of Bolsover and Shirebrook) and Erewash (parts of Ilkeston and Long Eaton), followed by Chesterfield (parts of Rother and Staveley), Amber Valley (part of Ironville and Riddings) and High Peak (part of Gamesley).
- The variation across the county is considerable. Over half of children in six LSOAs (parts of Ilkeston North, Creswell, Gamesley, Rother and Shirebrook) live in income deprived households compared with none in 10 LSOAs (parts of Alport, Chesterfield, Wingerworth, Gosforth Valley, Wirksworth, Hope Valley, Hadfield, Sandiacre and Breaston) in the county.
- A total of 53 LSOAs fall within the least deprived 10% in England (see Appendix C, Table 13 for more detail), with all districts containing one such area.
- Considering change over time, the figure of 10 LSOAs in the most deprived 10% in England in ID 2010 compares favourably with the figures of 11 and 21 respectively in ID 2007 and ID 2004. The 49 LSOAs within Derbyshire in the most deprived 20% in England is higher than the 43 in ID 2007 but an improvement on that of 53 in ID 2004.
- Additionally there has been change at the top of the rankings; of the 11 LSOAs in the 10% most deprived in ID 2007, only five remain in this category in ID 2010.

# IMD 2010: Income Deprivation Affecting Children Index (IDACI)



Rank of IDACI (No. of LSOAs in brackets)	
■	Most deprived 10% in England (10)
■	Most deprived 10-20% in England (39)
■	Most deprived 20-50% in England (150)
□	Least deprived 50-100% in England (287)

© Crown copyright and database rights [2011].  
Ordnance Survey [100023251]. You are not  
permitted to copy, sub-licence, distribute or sell  
any of this data to third parties in any form.

## Income Deprivation Affecting Older People Index

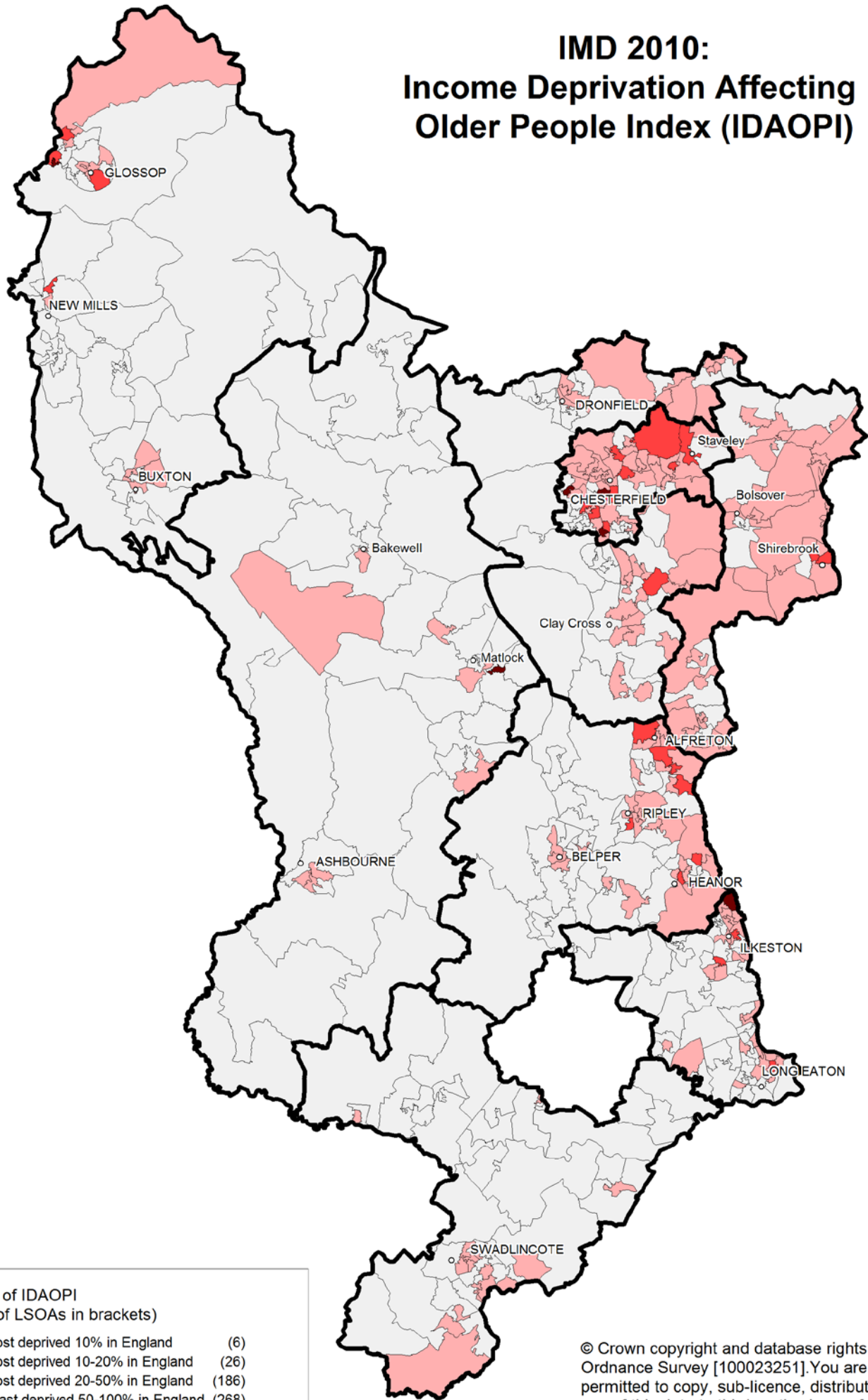
A second supplementary index for the Income Deprivation domain is the Income Deprivation Affecting Older People Index. This index represents income deprivation affecting older people, expressed as the proportion of adults aged 60 or over living in Income Support or income-based Jobseeker's Allowance or Pension Credit (Guarantee) families.

The key findings from analysis of this index are:

- There are an estimated 30,600 people aged 60 or over across the county who are classed as income deprived. This represents around 16% of the population in this age group in Derbyshire.
- A total of 32 (6.6%) of Derbyshire's LSOAs fall within the most deprived 20% nationally on this index (see Appendix B, Table 14 for more detail) where around 3,900 (roughly 2%) people aged 60 or over in the county are estimated to be income deprived. Of these 32 LSOAs six fall within the 10% most deprived LSOAs in England, where approximately 800 (0.4%) people aged 60 or over in Derbyshire are estimated to be income deprived.
- In each of the 4 LSOAs in the worst 10% in England at least 40% of older people are classed as income deprived. This is in contrast to the 39 LSOAs that fall within the least deprived 10%, where 7% or less of the older population are income deprived (see Appendix C, Table 4 for more detail).
- The map opposite shows the pattern of deprivation at LSOA level across the county. Of the LSOAs within the most deprived 20% of areas nationally, Chesterfield (parts of the town centre and Staveley) has the greatest proportion of its LSOAs in these two deciles, followed by Amber Valley (parts of Alfreton, Langley Mill and Ripley) and High Peak (parts of Gamesley and New Mills). However, each of Derbyshire's districts, with the exception of South Derbyshire, contains one such area.
- There has been a relative improvement on this domain over time. The 32 LSOAs in the most deprived 20% nationally is a steady improvement on the figures of 49 and 41 respectively in ID 2004 and ID 2007.



# IMD 2010: Income Deprivation Affecting Older People Index (IDAOPi)



Rank of IDAOPi (No. of LSOAs in brackets)	
■	Most deprived 10% in England (6)
■	Most deprived 10-20% in England (26)
■	Most deprived 20-50% in England (186)
□	Least deprived 50-100% in England (268)

© Crown copyright and database rights [2011].  
Ordnance Survey [100023251]. You are not permitted to copy, sub-licence, distribute or sell any of this data to third parties in any form.

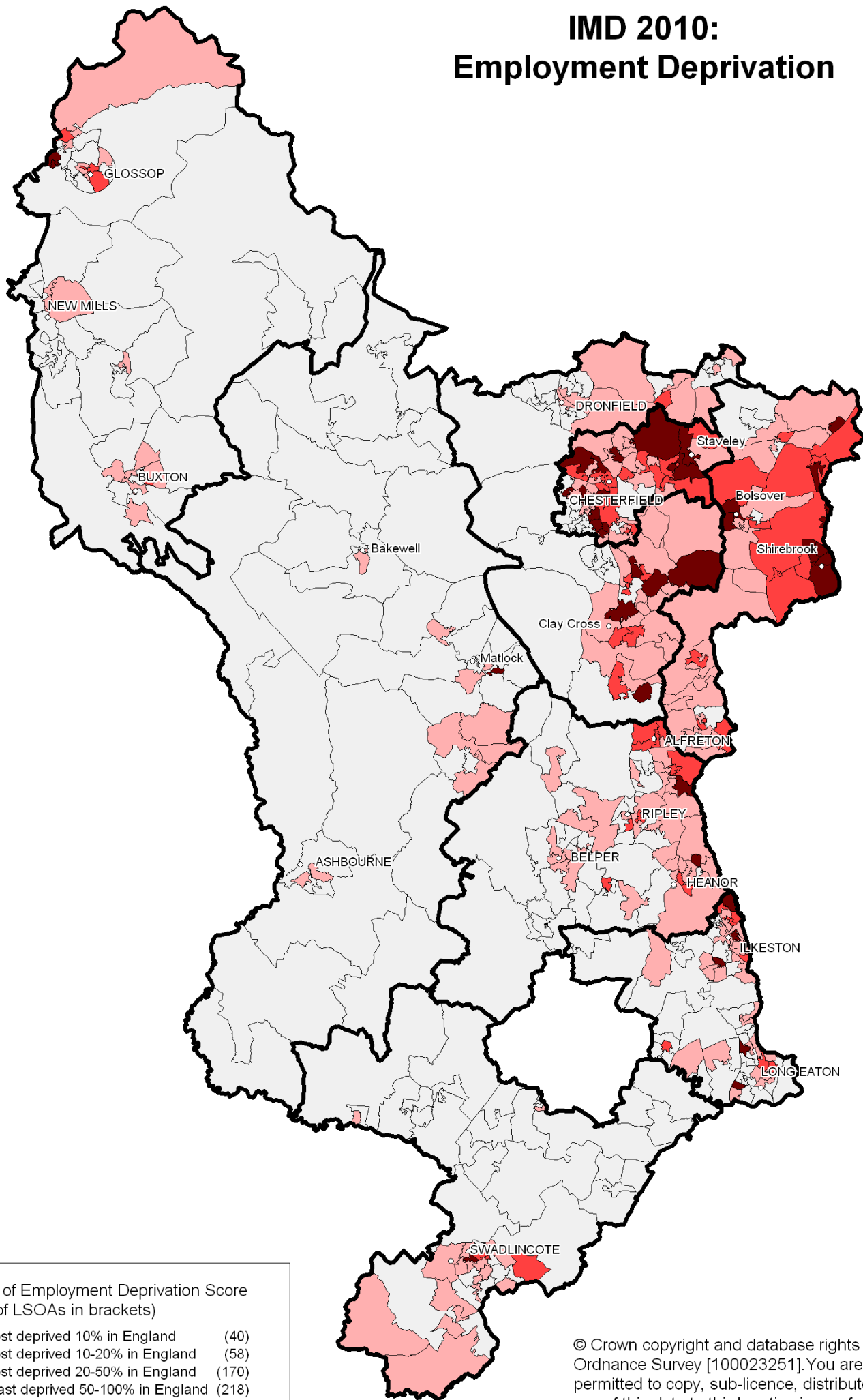
## Employment Deprivation Domain

This domain measures the proportion of the working age population (18 to 59F/64M) who would like to work but who are unable to do so due to unemployment, illness or disability. Specifically, employment deprivation is based on those people receiving Jobseekers Allowance, Incapacity Benefit or Severe Disablement Allowance or those participating in the New Deal. It is closely linked to the Income domain.

The key findings from analysis of the Employment domain are:

- The Employment domain is the second worst scoring domain in terms of the number of LSOAs falling into the most deprived 10 and 20% across England (see Section 4 for more detail).
- Across Derbyshire there are an estimated 44,200 people of working age who are classed as employment deprived. This represents around 10% of the county's working-age population.
- Across the county a total of 98 (20.2%) LSOAs fall in the most deprived 20% nationally on this domain (see Appendix B, Table 5 for more detail) where around 16,400 (approximately 4%) of the county's working age population are estimated to be employment deprived. 40 of these 98 LSOAs fall within the 10% most deprived areas in England, where approximately 7,600 (around 2%) of the working age population in Derbyshire are estimated to be employment deprived.
- The map opposite shows the pattern of deprivation across the county at LSOA level. The most deprived LSOA within Derbyshire for this domain lies within Loundsley Green ward in Chesterfield, which ranks in the top 1% most deprived areas in England. Of the LSOAs in Derbyshire in the most deprived 10% nationally, over half lie in just two districts (Bolsover (10) and Chesterfield (14), although each Derbyshire district contains at least one such area.
- Just 17 LSOAs fall within the least deprived 10% in England (see Appendix C, Table 15 for more detail), the second lowest of any of the other domains or indices at LSOA level, over half of which fall within just two districts (Derbyshire Dales and South Derbyshire).
- Considering change over time, the 40 LSOAs in the most deprived 10% nationally in ID 2010 is a slight improvement compared with ID 2007 (when the figure was 45). Additionally, although the 98 LSOAs in the 20% most deprived areas in ID 2010 is slightly higher than in ID 2007 (when the figure was 95) it is an improvement on ID 2004 (when the figure was 107).

# IMD 2010: Employment Deprivation



Rank of Employment Deprivation Score  
(No. of LSOAs in brackets)

- Most deprived 10% in England (40)
- Most deprived 10-20% in England (58)
- Most deprived 20-50% in England (170)
- Least deprived 50-100% in England (218)

© Crown copyright and database rights [2011].  
Ordnance Survey [100023251]. You are not  
permitted to copy, sub-licence, distribute or sell  
any of this data to third parties in any form.

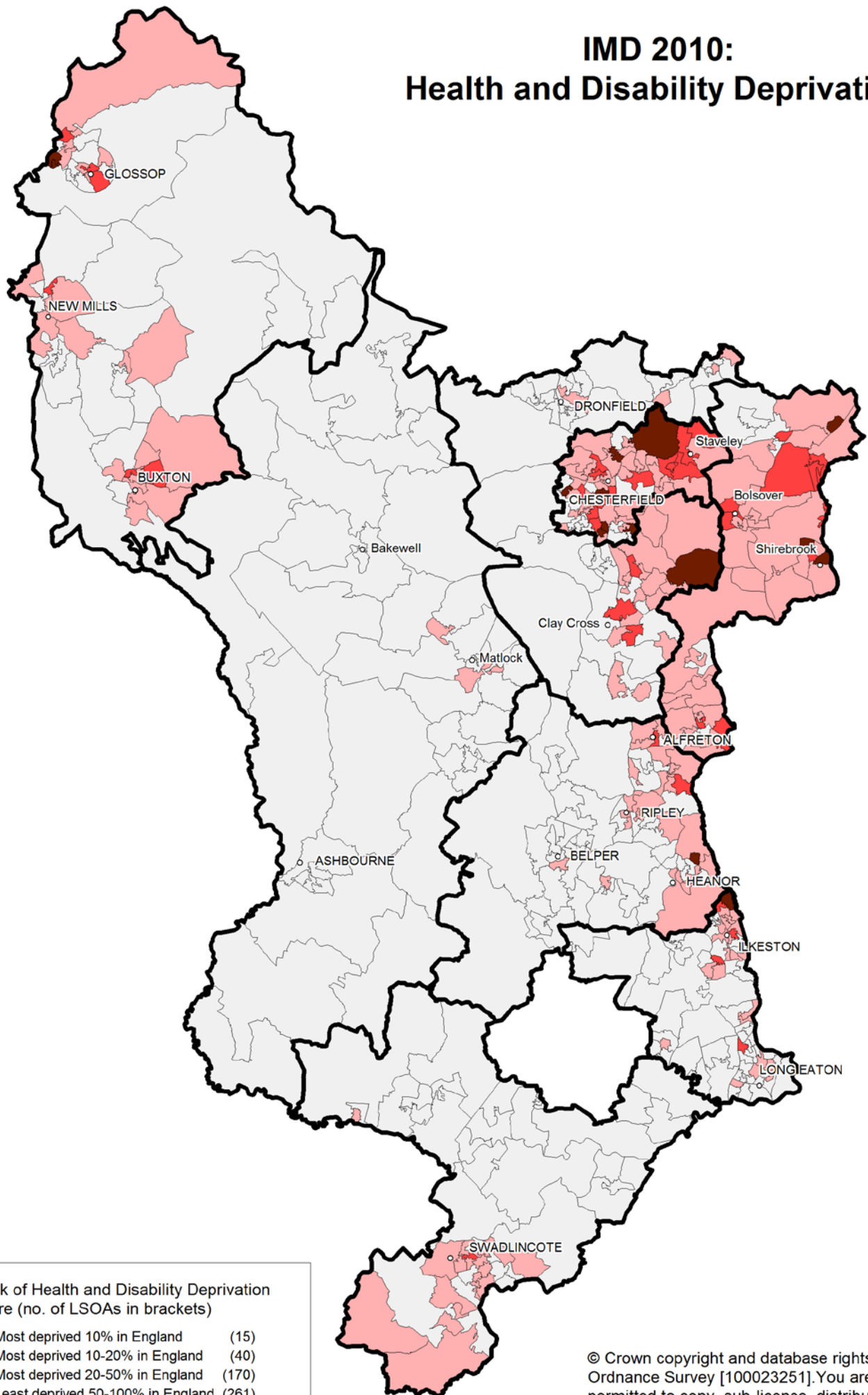
## Health Deprivation and Disability Domain

This domain identifies areas with relatively high rates of people who die prematurely or whose quality of life is impaired by poor health, either physical or mental. Levels of ill health and death become greater with age and so the data is standardised to account for an area's age and sex composition rather than the absolute levels of health.

The key findings from analysis of this domain are:

- A total of 55 (11.3%) of Derbyshire's LSOAs fall within the most deprived 20% nationally (see Appendix B, Table 6 for more detail). Bolsover and Chesterfield have more than half of the county's LSOAs in the most deprived 20% nationally, and High Peak also has a significant proportion. 15 of these 55 LSOAs fall within the most deprived 10% of areas in England.
- The map opposite shows the pattern of deprivation across the county's LSOAs. Of the LSOAs within the most deprived 10% nationally, Chesterfield contains the most (7), followed by Bolsover (3) and High Peak (2). All districts except South Derbyshire and Derbyshire Dales contain one such LSOA.
- There are only 13 LSOAs in the county in the least deprived 10% of LSOAs nationally (see Appendix C, Table 16 for more detail), the least of any of the domains.
- There has been a significant decrease in the number of LSOAs near the top of the rankings, with the 15 LSOAs in the most deprived 10% in England in ID 2010 being fewer than the 33 in ID 2007.
- Additionally, the average rank of Derbyshire's LSOAs on the national scale has improved by 2,046 places (out of the 32,482 in England) in ID 2010 compared with ID 2007, the most of any the domains.

# IMD 2010: Health and Disability Deprivation



Rank of Health and Disability Deprivation Score (no. of LSOAs in brackets)	
Dark red	Most deprived 10% in England (15)
Red	Most deprived 10-20% in England (40)
Light red	Most deprived 20-50% in England (170)
White	Least deprived 50-100% in England (261)

© Crown copyright and database rights [2011].  
Ordnance Survey [100023251]. You are not permitted to copy, sub-licence, distribute or sell any of this data to third parties in any form.

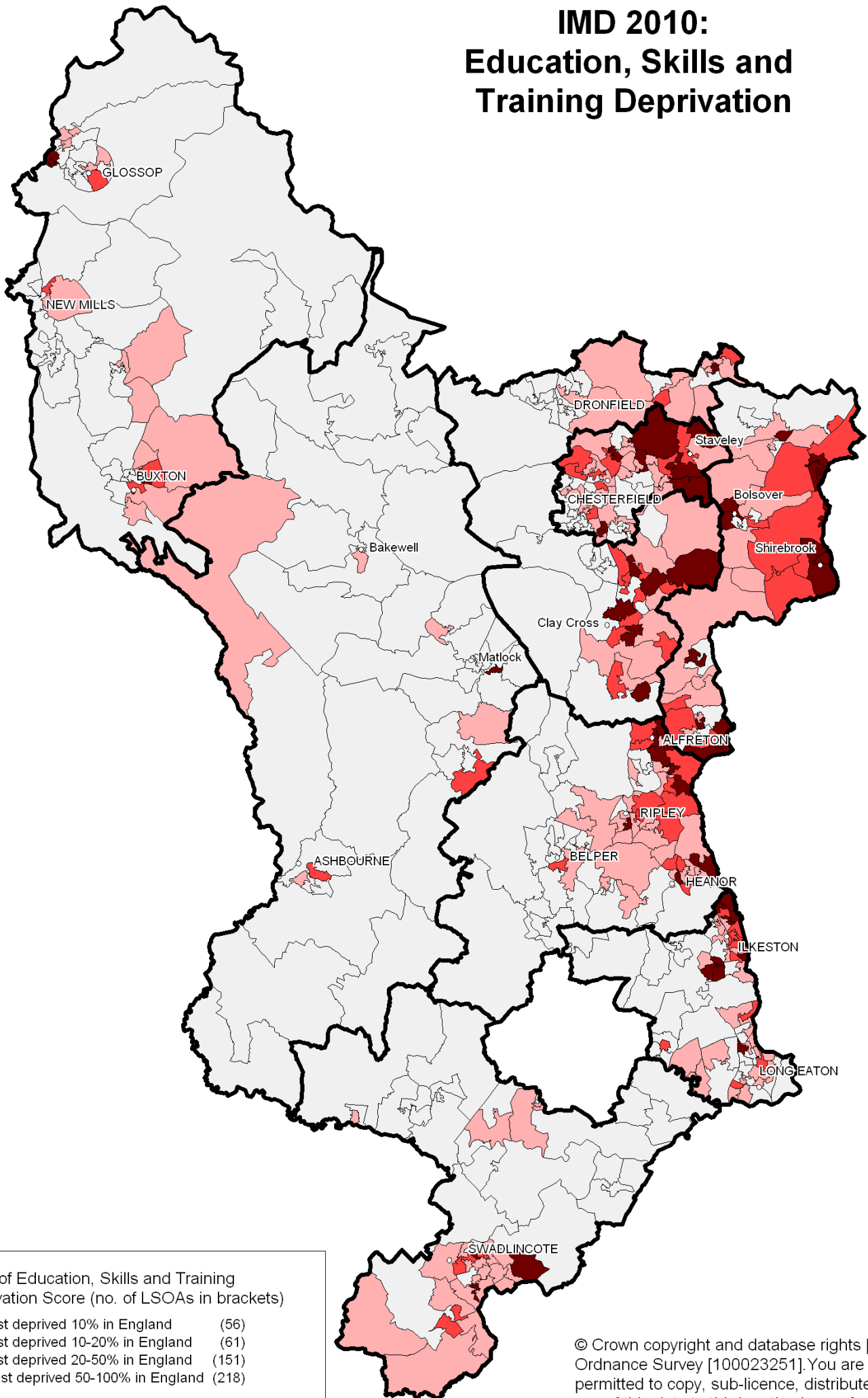
## Education, Skills and Training Deprivation Domain

This domain measures the extent of deprivation in educational attainment, skills and training for children, young people and the working age population in a local area. The indicators fall into two sub-domains: one relating to children and young people and one relating to adult skills. These two sub-domains are designed to reflect the 'flow' and 'stock' of educational disadvantage within an area. That is, the Children and Young People sub-domain measures the attainment of qualifications and associated measures ('flow'), while the Skills sub-domain measures the lack of qualifications in the resident working age adult population ('stock').

The key findings from analysis of the overall Education, Skills and Training domain are:

- The Education, Skills and Training domain is the worst scoring domain in terms of the number of LSOAs falling into the most deprived 10 and 20% across England (see Section 4 for more detail).
- In Derbyshire there are 117 (24.1%) LSOAs that fall in the most deprived 20% nationally (see Appendix B, Table 7 for more detail). Over half of the LSOAs in Bolsover are in the most deprived 20% nationally, and significant proportions are also shown by North East Derbyshire, Amber Valley and Erewash.
- Of the 117 LSOAs 56 fall into the most deprived 10% of LSOAs in England. Over a quarter of these are within Bolsover. Amber Valley, Erewash and Chesterfield also contain a relatively high number.
- The map opposite shows the pattern of deprivation at LSOA level across the county. The most deprived LSOA within Derbyshire lies within Ilkeston North Ward and covers the Cotmanhay area. It ranks in the top 1% most deprived areas in England.
- Just 21 LSOAs lie in the least deprived 10% in England (see Appendix C, Table 17 for more detail), the majority of which are within just four districts, South Derbyshire (5), Derbyshire Dales (4), Chesterfield (4) and Amber Valley (4).
- There has been a worsening in the number of LSOAs at the most deprived end of the rankings. The figure of 56 LSOAs in the most deprived 10% of LSOAs nationally is an increase on the figures of 46 in ID 2004 and 47 in ID 2007.
- Analysis of the two sub-domains shows that Derbyshire's relative deprivation on the Education, Skills and Training domain is mainly due to the Skills sub-domain which measures the proportion of working age adults with no or low qualifications. Over 30% of the county's 486 LSOAs fall within the most deprived 20% in the country on this sub domain, with LSOAs in Bolsover and Chesterfield contributing significantly to this (see Appendix D, Table 21 for more detail).

# IMD 2010: Education, Skills and Training Deprivation



## Barriers to Housing and Services Deprivation Domain

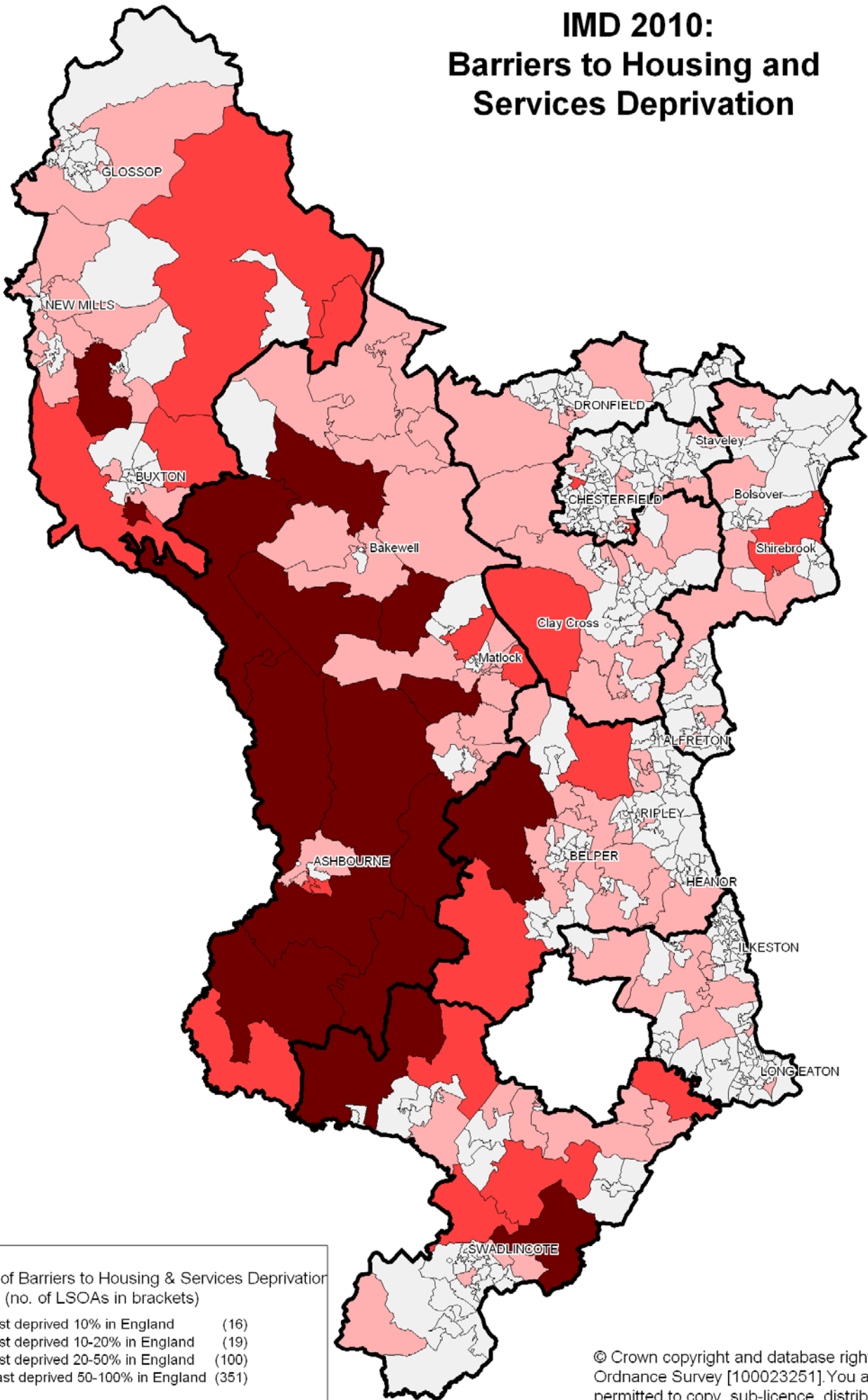
This domain measures the physical and financial accessibility to housing and key local services and is split into two sub-domains: Geographical Barriers – which relate to the physical proximity of GP surgeries, primary schools, shops and Post Offices, and Wider Barriers - which relate to access to housing, e.g. affordability, homelessness and overcrowding.

The key findings from analysis of this domain are:

- A total of 35 (7.2%) of Derbyshire's LSOAs fall within the most deprived 20% nationally on this domain (see Appendix B, Table 8 for more detail). 16 of the 35 LSOAs fall into the highest ranked 10% LSOAs in England, the majority (11) of which are in Derbyshire Dales.
- The map opposite shows the pattern of deprivation at LSOA level across the county. Derbyshire Dales has by far the greatest number of its LSOAs in the highest ranked 20% of LSOAs nationally. This is likely to reflect the high house prices and long distances to travel to key services in rural parts of the county. High Peak and South Derbyshire also have high numbers. All districts with the exception of Erewash have LSOAs in this category.
- There are 108 LSOAs in the lowest ranked 10% across England (see Appendix C, Table 18 for more detail), more than in any other domain.
- A comparison of ID 2007 and ID 2010 shows that there has been a slight improvement on this domain in the number of LSOAs in the top 10% deprived in England, with there being 5 fewer in ID 2010 compared with ID 2007. There has also been a decrease in the number of LSOAs in the top 20% most deprived in the country, from 45 in ID 2007 to the 35 in ID 2010.
- However, in terms of the number of LSOAs in both of these categories, the figures are higher than in ID 2004.
- Analysis of the two sub-domains (Geographical Barriers and Wider Barriers) shows that Derbyshire's relative deprivation on the Barriers to Housing and Services domain is primarily down to the Geographical Barriers sub-domain, which measures road distances to key local services. Over a quarter of the county's 486 LSOAs fall within the highest ranked 20% in the country on this sub-domain, and over half of the 43 LSOAs in Derbyshire Dales are in this category (see Appendix D, Table 22 for more detail).



# IMD 2010: Barriers to Housing and Services Deprivation



Rank of Barriers to Housing & Services Deprivation Score (no. of LSOAs in brackets)	
■	Most deprived 10% in England (16)
■	Most deprived 10-20% in England (19)
■	Most deprived 20-50% in England (100)
■	Least deprived 50-100% in England (351)

© Crown copyright and database rights [2011].  
Ordnance Survey [100023251]. You are not permitted to copy, sub-licence, distribute or sell any of this data to third parties in any form.

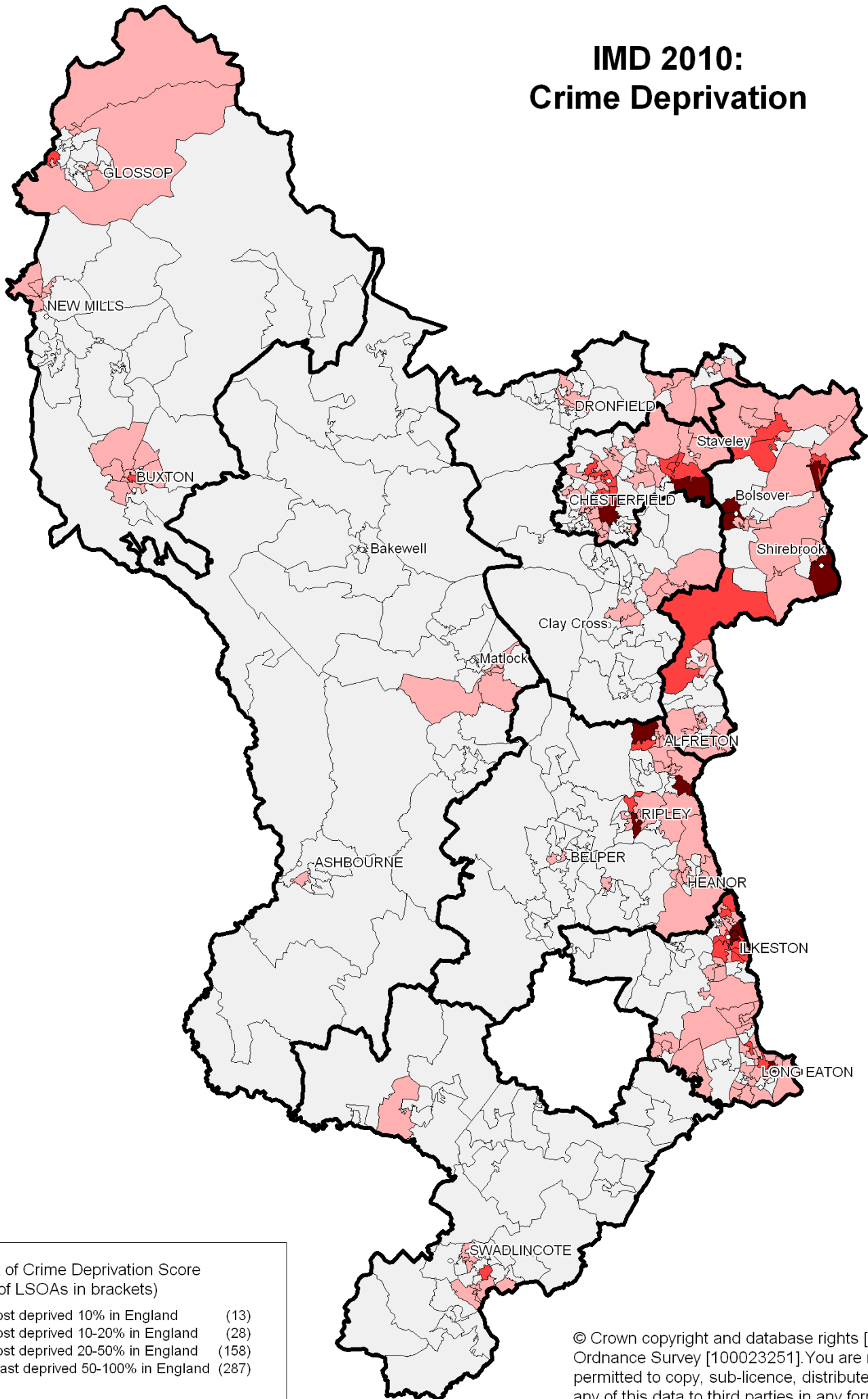
## Crime Domain

Crime is an important feature of deprivation that has major effects on people and communities. The crime domain is a composite measure using four different rates of major crimes (burglary, theft, criminal damage and violence) to represent the risk of personal and material victimisation at a small area level.

The key findings from analysis of the Crime domain are:

- A total of 41 (8.4%) of the county's LSOAs are in the most deprived 20% nationally on this domain (see Appendix B, Table 9 for more detail). Bolsover, Erewash and Chesterfield have the highest number of their LSOAs in the most deprived 20% of LSOAs nationally. Neither Derbyshire Dales nor North East Derbyshire have any of their LSOAs in the most deprived 20%.
- There are 13 LSOAs in Derbyshire within the most deprived 10% of LSOAs in England; the map opposite shows the pattern of deprivation at LSOA level across the county. Bolsover (in parts of Creswell, Shirebrook and Bolsover), Erewash (in parts of Ilkeston and Long Eaton) and Amber Valley (in parts of Alfreton, Ironville and Ripley) have the highest number of their LSOAs in the most deprived 10% of LSOAs nationally.
- A total of 39 LSOAs fall within the least deprived 10% in England on this domain (see Appendix C, Table 19 for more detail), more than two thirds of which fall within three districts (Derbyshire Dales, North East Derbyshire, and Amber Valley).
- There has been a slight worsening in the number of LSOAs in the most deprived 10% in England compared with ID 2007, and the number of LSOAs in the most deprived 20% in the country has nearly doubled from the 21 in ID 2007 to the 41 in ID 2010. This picture is in contrast to the improvement that was shown between ID 2004 and ID 2007.

# IMD 2010: Crime Deprivation



Rank of Crime Deprivation Score  
(No. of LSOAs in brackets)

- Most deprived 10% in England (13)
- Most deprived 10-20% in England (28)
- Most deprived 20-50% in England (158)
- Least deprived 50-100% in England (287)

© Crown copyright and database rights [2011].  
Ordnance Survey [100023251]. You are not  
permitted to copy, sub-licence, distribute or sell  
any of this data to third parties in any form.

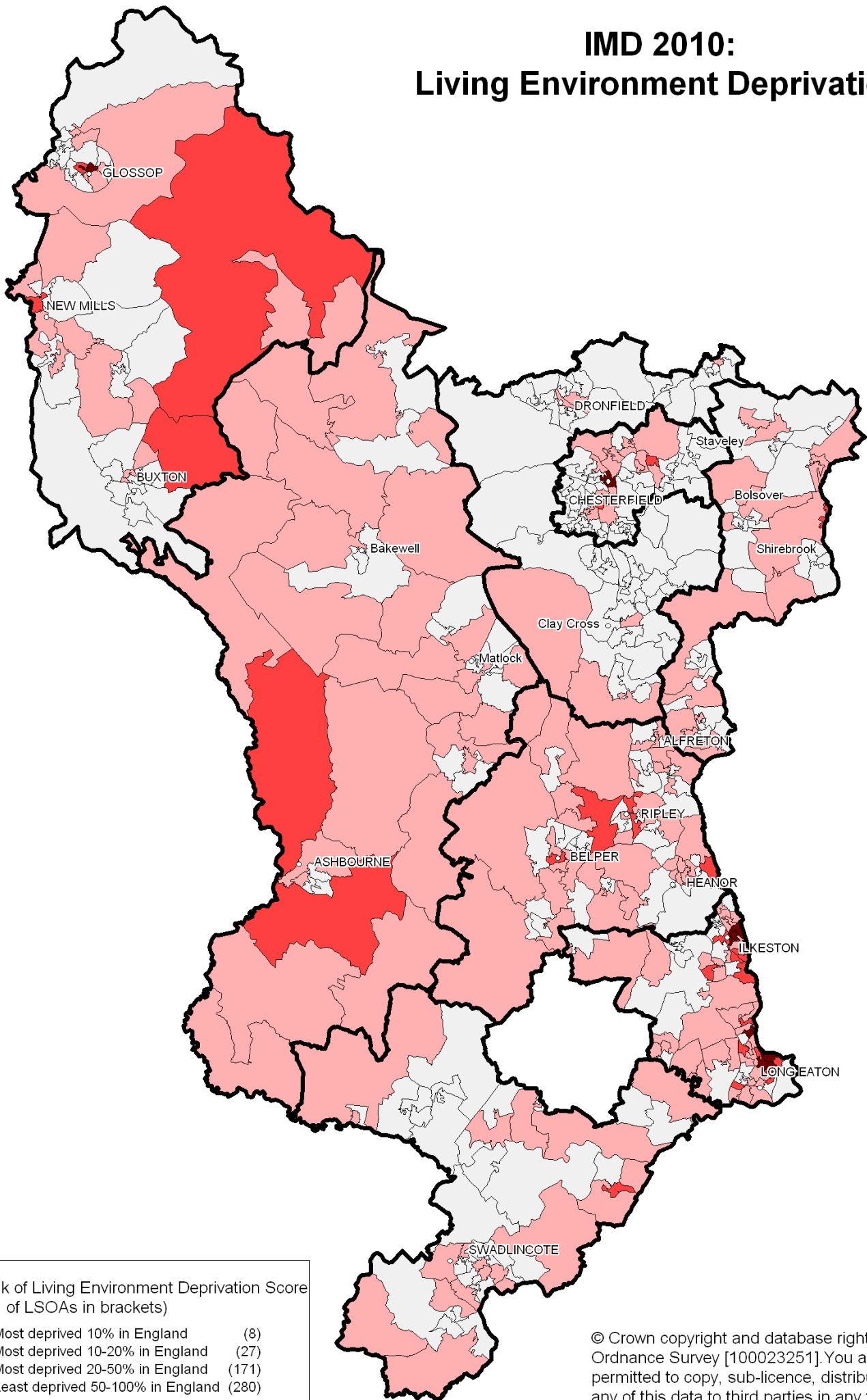
## Living Environment Deprivation Domain

This domain measures the quality of an individual's local environment both within and beyond the home. The indicator falls into two sub-domains: the 'Indoors' living environment, which measures the quality of housing, and the 'Outdoors' living environment, which has two measures relating to air quality and road traffic accidents.

The key findings from analysis of this domain are:

- 35 (7.2%) of Derbyshire's LSOAs are in the most deprived 20% nationally (see Appendix B, Table 10 for more detail). Erewash has nearly a quarter of its LSOAs in the most deprived 20% of areas nationally, and High Peak also has relatively higher numbers. However, none of North East Derbyshire LSOAs fall within the most deprived 20% nationally.
- There are 8 LSOAs in the county in the most deprived 10% of areas in England. The map opposite shows the pattern of deprivation at LSOA level across the county. Ilkeston and Long Eaton contain five of the county's LSOAs in the most deprived 10% of areas nationally.
- At the other end of the ranks, there are 34 LSOAs in the least deprived 10% in England (see Appendix C, Table 20 for more detail). All districts with the exception of Derbyshire Dales contain one such area.
- Although there has not been any change on this domain in the number of LSOAs in the top 10% deprived in England compared with ID 2007, there has been a slight worsening in the most deprived 20% category, continuing the trend that was shown between ID 2004 and ID 2007.
- Analysis of the two sub-domains shows that Derbyshire's relative deprivation is mainly due to the 'Indoors' sub-domain, which covers social and private housing in poor condition and houses without central heating. There are nearly double the number of LSOAs in the most deprived 20% nationally in the 'Indoors' sub-domain than for the 'Outdoors' sub-domain. In the 'Indoors' sub-domain more than a quarter of the LSOAs in Erewash and Derbyshire Dales are in the most deprived 20% nationally (see Appendix D, Table 23 for more detail).

# IMD 2010: Living Environment Deprivation



Rank of Living Environment Deprivation Score  
(No. of LSOAs in brackets)

- Most deprived 10% in England (8)
- Most deprived 10-20% in England (27)
- Most deprived 20-50% in England (171)
- Least deprived 50-100% in England (280)

© Crown copyright and database rights [2011].  
Ordnance Survey [100023251]. You are not  
permitted to copy, sub-licence, distribute or sell  
any of this data to third parties in any form.

## Urban - Rural Analysis

Derbyshire's population can be classified as living in one of three area types:

- Urban areas that are part of settlements greater than 10,000 population;
- Town and fringe areas;
- Villages, hamlets and isolated dwellings.

The overall IMD 2010 has been analysed to identify if there are any differences in the pattern of deprivation between urban and rural parts of the county. The key findings from this analysis were as follows:

- The average rank of LSOAs described as urban is 15,860 (out of the 32,482 in England, and with the most deprived ranked as 1). The average rank for town and fringe areas is 20,485 and that for villages, hamlets and isolated dwellings is 20,458. This suggests that populations in urban areas in Derbyshire are more likely to live in deprived areas than those living elsewhere. The average rank for areas described as town and fringe is a little better than for areas described as villages, hamlets and isolated dwellings.
- It should be noted that the IMD is better at highlighting deprivation in urban areas, where there are greater concentrations of people. Deprivation in rural areas can be more scattered and therefore less likely to be highlighted in the IMD. Additionally, people in rural areas may experience the same deprivation as those in towns, but this may be compounded because they are remote from service centres.
- If the ID 2010 and ID 2007 are compared, it is seen that the average rank for urban and rural populations has improved. The average rank of urban LSOAs has shown an improvement of 198 places (out of the 32,482 in England), the average rank of town and fringe LSOAs has improved by 510 places and the average rank for villages, hamlets and isolated dwellings LSOAs has improved by 769 places. The latter reverses the change shown between 2004 and 2007 when the rank for villages, hamlets and isolated dwellings showed a slight worsening of 112 places.

### Overall IMD score – average rank of LSOAs by urban/rural classification

Area	2004	2007	2010
Urban	14,856	15,662	15,860
Town and fringe	19,375	19,975	20,485
Village, hamlet and isolated dwellings	19,801	19,689	20,458

### Section 3: District Summary Measures

Six summary measures have been devised to allow comparisons across the 326 local authority districts in England and are as follows; Average Rank of Scores, Average Rank of Ranks, Local Concentration, Extent, Income and Employment.

All of the summary measures need to be considered together to give a full description of an area's deprivation, no single summary measure is favoured over another. For each summary measure IMD information is used to rank local authority areas according to their relative level of deprivation, with 1 being the most deprived to 326 being the least deprived.

- In 2010 just two of Derbyshire's local authorities fall into the 'most deprived 50' across England on one or more of the six summary measures (see Appendix E, Table 24 for more details).
- There is no change between ID 2007 and ID 2010 in the number of districts that fall in the 'most deprived 50' on one or more of the summary measures. In both of the indices the districts of Bolsover and Chesterfield fall within this benchmark.
- Across all six measures, six districts show a net improvement from 2007 to 2010 relative to the 326 districts in England; with the greatest shown by Chesterfield, followed by North East Derbyshire, Bolsover, South Derbyshire, Derbyshire Dales, and Amber Valley. A net worsening is shown by High Peak and Erewash, but particularly so by the latter.

#### Local authority summary measures - change between ID 2007 and ID 2010 in relative rankings of Derbyshire districts

District	Rank of Local Concentration	Rank of Extent	Rank of Income Scale	Rank of Employment Scale	Rank of Average Score	Rank of Average Rank
Amber Valley	-2	-2	2	0	-11	-8
Bolsover	-18	-13	3	-6	-8	-6
Chesterfield	-26	-14	-3	-7	-19	-17
Derbyshire Dales	-1	6	-2	-9	-9	-8
Erewash	22	21	17	20	4	5
High Peak	5	3	-1	4	2	3
North East Derbyshire	-10	-11	-6	-11	-8	-12
South Derbyshire	-9	-8	-2	-11	-6	-8

#### Average of the LSOA Ranks

This is calculated by taking the individual ranks for each LSOA within a district and averaging them. These averaged ranks are then ranked to give a district summary measure. Since the ranks for all LSOAs (deprived and non-deprived) are included the character of the whole district is examined.

The key findings for this summary measure are:

- Bolsover falls within the 'most deprived 50' nationally on this measure, with a ranking of 43<sup>rd</sup>. Neighbours to Bolsover in the ranked list are Pendle (Lancashire), Gateshead, Barnsley, and West Somerset.
- Other districts in the top half (most deprived) of the rankings are Chesterfield (ranked 91<sup>st</sup>), Erewash (ranked 150<sup>th</sup>), and Amber Valley (ranked 159<sup>th</sup>).
- Although Bolsover and Chesterfield are the Derbyshire districts with the highest rankings, a comparison between ID 2007 and ID 2010 shows that they have shown improvement in their rankings, particularly the latter which shows the greatest relative improvement of all the county's districts, compared with ID 2007. Only Erewash and High Peak have shown a relative worsening, albeit slight, in their ranks.

### **Average of the LSOA Scores**

This is calculated by taking the individual scores for each LSOA within a district and averaging them. Again the scores of both the deprived and non-deprived LSOAs are used. This measure can be affected by extreme scores of a number of LSOAs within a district.

The key findings for this summary measure are:

- None of Derbyshire's districts fall into 'the most deprived 50' nationally on this measure.
- Four of Derbyshire's districts lie in the top half (most deprived) of the rankings: Bolsover (58<sup>th</sup>), Chesterfield (91<sup>st</sup>), Erewash (148<sup>th</sup>) and Amber Valley (158<sup>th</sup>).
- When comparing ID 2007 and ID 2010, Chesterfield shows the greatest relative improvement of the districts in the county, moving 19 places down the rankings. As for the average of LSOA ranks, Erewash and High Peak are the only districts to show a relative worsening.

### **Income and Employment:**

These measures are designed to give an indication of the numbers of people experiencing income and employment deprivation. In the data published by Communities and Local Government, the measures are presented as Income and Employment Scales which are straight counts of people experiencing income and employment deprivation. However, they do not account for the difference in population size between different local authority areas and therefore comparison between areas is of limited value. To enable more meaningful comparison we have converted the counts into percentages which have then been ranked.

The key findings for these summary measures are:

#### **Income**

- None of Derbyshire's districts fall into the 'most deprived 50' nationally on this measure.



- However, of all Derbyshire districts Bolsover has the greatest proportion (around 17%) of population who are income deprived and is ranked 70<sup>th</sup> most deprived of all local authority districts. Chesterfield ranked 77<sup>th</sup>, Erewash ranked 145<sup>th</sup>, Amber Valley ranked 154<sup>th</sup>, and North East Derbyshire ranked 156<sup>th</sup>.
- Comparing ID 2007 with ID 2010, three of Derbyshire's districts show a worsening in the rank of income deprivation expressed as the percentage of the population; Amber Valley, Bolsover, and Erewash. The latter shows the greatest percentage change (5.2%) up the rankings (becoming more deprived) and is the only Derbyshire district having a greater proportion of its population income deprived in ID 2010 compared with ID 2007.

### **Employment**

- Two of Derbyshire's districts fall within the national benchmark of 'the most deprived 50' on this measure.
- Bolsover is ranked 30<sup>th</sup> nationally with approximately 15% of its working age population estimated to be experiencing employment deprivation. Chesterfield is ranked 41<sup>st</sup> with around 14% of its working age population estimated to be experiencing employment deprivation. The next four highest rankings are; North East Derbyshire (112<sup>th</sup>), Erewash (120<sup>th</sup>), Amber Valley (128<sup>th</sup>) and High Peak (161<sup>st</sup>).
- When comparing ID 2007 with ID 2010, the ranking of two districts has worsened; Erewash which has shown a percentage change of 6.1% up the rankings and High Peak, a 1.2% change. Both of these show slight increases in the proportions of the working population employment deprived between ID 2007 and ID 2010 as does Amber Valley.

### **Local Concentration**

This measures 'hotspots' of deprivation. A district with many individual LSOAs in the deprivation high ranks will appear in the top ranks here. Specifically, it is based on the average of the ranks of a local authority district's most deprived LSOAs that contain exactly 10% of the population.

The key findings for this summary measure are:

- No Derbyshire district falls into the 'most deprived 50' nationally on this measure.
- The two highest ranking (most deprived) districts on this measure are Bolsover (ranked 97<sup>th</sup>) and Chesterfield (ranked 108<sup>th</sup>).
- Despite their position in the ranks for ID 2010, comparison with ID 2007 indicates Bolsover and Chesterfield have shown the greatest improvement of the eight districts. Two districts have a worse ranking in ID 2010 compared with ID 2007; Erewash and High Peak.

### **Extent**

The aim of this measure is to portray how widespread high levels of deprivation are in a district. The measure is based on the proportion of a local authority district's population living in the most deprived LSOAs in the country.

The key findings for this summary measure are:

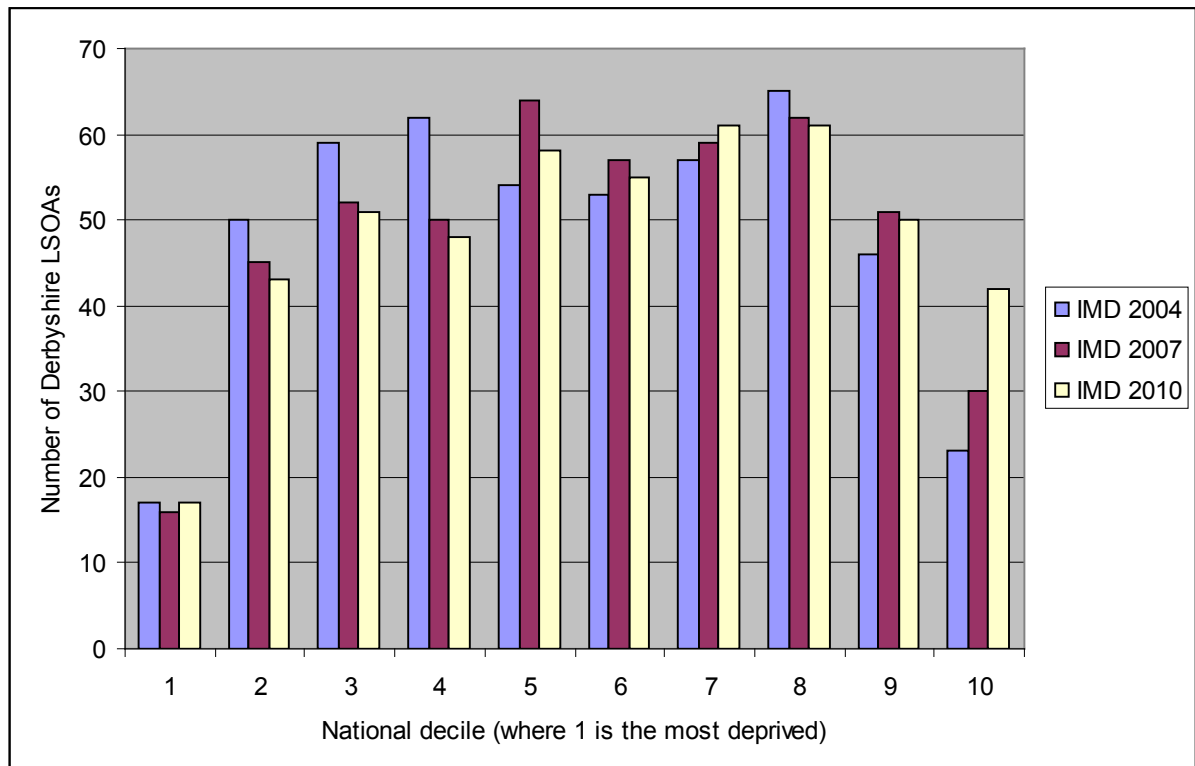
- None of Derbyshire's districts fall into the 'most deprived 50' nationally on this measure.
- Bolsover (ranked 66<sup>th</sup>) and Chesterfield (ranked 78<sup>th</sup>) are the highest ranking (most deprived) districts.
- Again, as with local concentration, Bolsover and Chesterfield have shown the greatest improvement when comparing ID 2007 with ID 2010. Three districts show a worse picture; Erewash, High Peak and Derbyshire Dales.

## Section 4: Change Over Time

### Overall IMD 2010 - national deciles

The chart below compares the number of Derbyshire's LSOAs for the overall IMD in each of the national deciles for ID 2010, 2007 and 2004. As shown the number of LSOAs in the county in the 10% and 20% most deprived LSOAs nationally is fairly similar from IMD 2004 through to IMD 2010. The most noticeable change is in the number of LSOAs in the least deprived 10% which has increased since ID 2004.

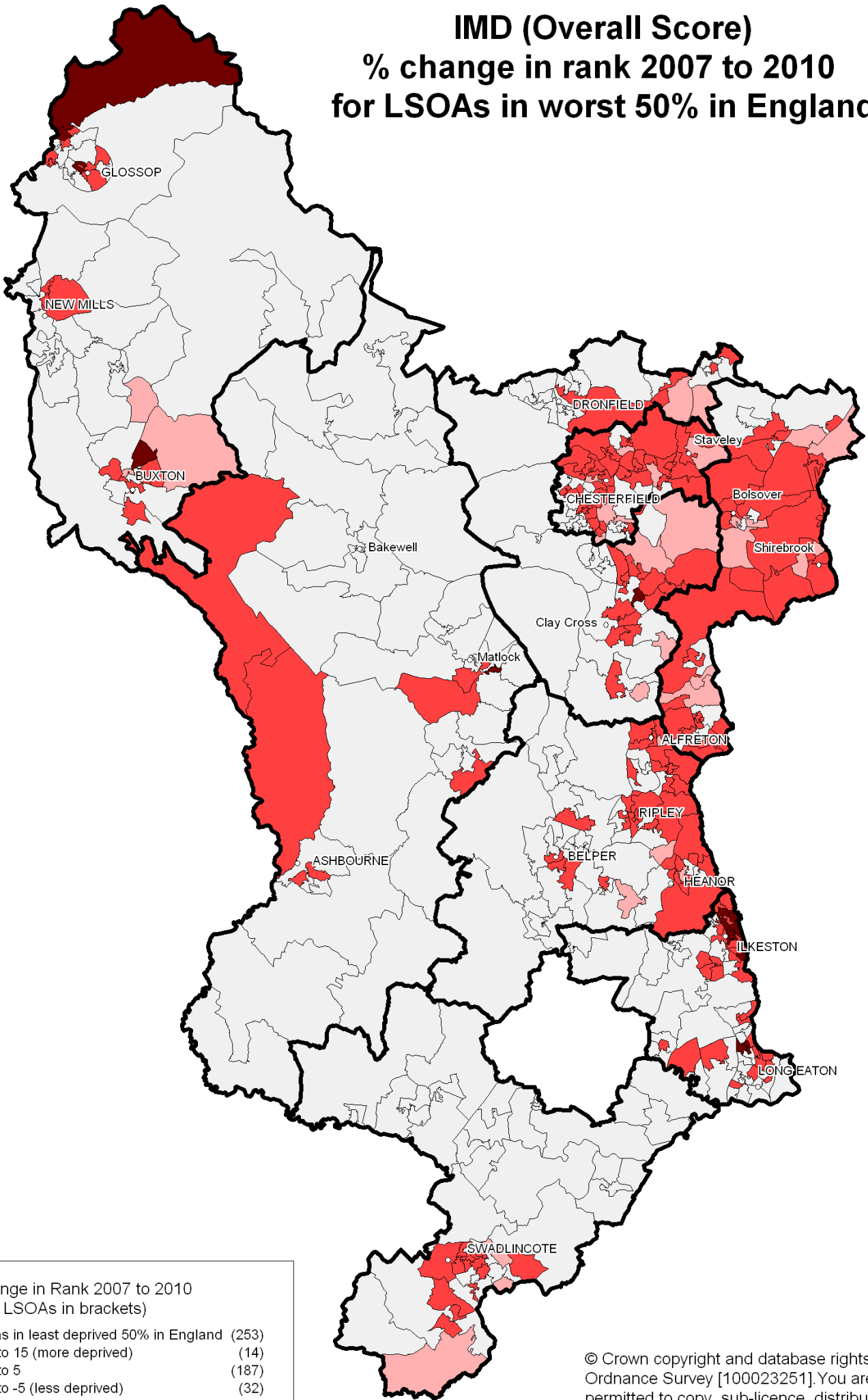
Number of Derbyshire LSOAs by national decile



### Overall IMD 2010 - movement of LSOAs up or down rankings

The map over the page illustrates the change between IMD 2007 and IMD 2010 for the overall score by displaying the percentage change (up or down the rankings) for the Derbyshire LSOAs in the worst 50% in England in IMD 2010. Whilst areas in the north east of the county have generally improved in relative terms, parts of Erewash and High Peak are showing a relatively worse picture.

# IMD (Overall Score) % change in rank 2007 to 2010 for LSOAs in worst 50% in England



% Change in Rank 2007 to 2010 (No. of LSOAs in brackets)	
□	Areas in least deprived 50% in England (253)
■	5 to 15 (more deprived) (14)
■	-5 to 5 (187)
■	-15 to -5 (less deprived) (32)

The table below looks at change at LSOA level in a slightly different way. It shows the change in rankings between ID 2007 and ID 2010 on the overall IMD for the LSOAs in the county ranked in the most deprived 20% nationally in ID 2010.

**IMD 2010 (overall index) - Derbyshire LSOAs in the 20% most deprived in England – change compared with ID 2007**

LSOA	Ward containing	Local authority	IMD score 2010	England rank of IMD	County rank	Up/down movement and by how many places 2007 - 2010
E01019663	Ilkeston North	Erewash	60.49	785	1	↔
E01019578	Rother	Chesterfield	58.00	1,041	2	↔
E01019507	Shirebrook East	Bolsover	52.11	1,837	3	↑ 1
E01019729	Gamesley	High Peak	52.06	1,842	4	↑ 11
E01019728	Gamesley	High Peak	51.71	1,884	5	↑ 4
E01019444	Ironville and Riddings	Amber Valley	51.22	1,967	6	↑ 1
E01019509	Shirebrook North West	Bolsover	49.74	2,224	7	↓ 4
E01019561	Loundsley Green	Chesterfield	49.52	2,272	8	↑ 6
E01019488	Bolsover West	Bolsover	49.36	2,313	9	↓ 1
E01019498	Elmton-with-Creswell	Bolsover	48.60	2,458	10	↑ 1
E01019575	Rother	Chesterfield	48.46	2,486	11	↓ 6
E01019566	Middlecroft and Poolsbrook	Chesterfield	47.13	2,749	12	↓ 6
E01019662	Ilkeston Central	Erewash	46.23	2,936	13	↑ 33
E01019483	Bolsover North West	Bolsover	46.20	2,945	14	↑ 2
E01019799	Holmewood and Heath	NE Derbyshire	45.96	3,010	15	↑ 5
E01019650	Derby Road West	Erewash	45.03	3,219	16	↑ 27
E01019527	Barrow Hill & New Whittington	Chesterfield	44.89	3,246	17	↓ 7
E01019664	Ilkeston North	Erewash	44.29	3,386	18	↑ 18
E01019572	Old Whittington	Chesterfield	44.15	3,411	19	↓ 1
E01019505	Scarcliffe	Bolsover	44.10	3,419	20	↓ 1
E01019510	Shirebrook North West	Bolsover	43.99	3,437	21	↓ 9
E01019568	Middlecroft & Poolsbrook	Chesterfield	43.94	3,452	22	↓ 9
E01019523	Whitwell	Bolsover	43.44	3,591	23	↑ 5
E01019625	Matlock St Giles	Derbyshire Dales	43.42	3,600	24	↑ 29
E01019581	St Helens	Chesterfield	42.77	3,767	25	↑ 1
E01019452	Langley Mill & Aldercar	Amber Valley	42.54	3,822	26	↑ 6
E01019808	North Wingfield Central	NE Derbyshire	42.16	3,929	27	↓ 6
E01019761	Stone Bench	High Peak	41.87	4,013	28	↓ 6

E01019668	Kirk Hallam	Erewash	41.53	4,107	29	↑ <b>19</b>
E01019682	Nottingham Rd	Erewash	41.48	4,122	30	↑ <b>8</b>
E01019469	Somercotes	Amber Valley	41.25	4,191	31	↑ <b>2</b>
E01019796	Grassmoor	NE Derbyshire	41.20	4,208	32	↓ <b>7</b>
E01019463	Ripley & Marehay	Amber Valley	40.67	4,371	33	↓ <b>9</b>
E01019549	Hollingwood & Inkersall	Chesterfield	39.10	4,839	34	↑ <b>5</b>
E01019775	Clay Cross North	NE Derbyshire	38.96	4,883	35	↑ <b>17</b>
E01019699	Sawley	Erewash	38.76	4,942	36	↑ <b>27</b>
E01019547	Hasland	Chesterfield	38.58	5,001	37	↑ <b>20</b>
E01019511	Shirebrook South East	Bolsover	38.48	5,027	38	↓ <b>11</b>
E01019556	Holmebrook	Chesterfield	38.07	5,160	39	↑ <b>1</b>
E01019497	Elmton-with-Creswell	Bolsover	37.73	5,276	40	↓ <b>9</b>
E01019646	Cotmanhay	Erewash	37.17	5,456	41	↑ <b>37</b>
E01019584	St Leonards	Chesterfield	36.79	5,583	42	↓ <b>25</b>
E01019403	Alfreton	Amber Valley	36.60	5,652	43	↑ <b>12</b>
E01019863	Newhall & Stanton	South Derbyshire	36.45	5,710	44	↑ <b>7</b>
E01019571	Moor	Chesterfield	36.21	5,795	45	↓ <b>4</b>
E01019565	Lowgates & Woodthorpe	Chesterfield	36.02	5,859	46	↓ <b>12</b>
E01019542	Dunston	Chesterfield	35.84	5,918	47	↓ <b>18</b>
E01019500	Pinxton	Bolsover	35.71	5,972	48	↑ <b>6</b>
E01019441	Heanor West	Amber Valley	35.26	6,122	49	↑ <b>22</b>
E01019563	Lowgates & Woodthorpe	Chesterfield	35.26	6,125	50	↓ <b>15</b>
E01019567	Middlecroft & Poolsbrook	Chesterfield	35.25	6,128	51	↓ <b>14</b>
E01019688	Old Park	Erewash	35.13	6,172	52	↑ <b>28</b>
E01019644	Cotmanhay	Erewash	34.99	6,221	53	↑ <b>20</b>
E01019515	South Normanton East	Bolsover	34.93	6,238	54	↓ <b>10</b>
E01019647	Derby Road East	Erewash	34.92	6,244	55	↑ <b>11</b>
E01019661	Ilkeston Central	Erewash	34.83	6,281	56	↑ <b>26</b>
E01019508	Shirebrook Langwith	Bolsover	34.75	6,309	57	↓ <b>27</b>
E01019777	Clay Cross South	NE Derbyshire	34.70	6,327	58	↑ <b>1</b>
E01019401	Alfreton	Amber Valley	34.31	6,448	59	↓ <b>1</b>
E01019817	Shirland	NE Derbyshire	34.18	6,494	60	↓ <b>37</b>

Note: rank of 1 is most deprived.

- ↔ Hasn't moved in the county rankings between 2007 and 2010
- ↑ Has moved up in the county rankings (relatively more deprived since 2007)
- ↓ Has moved down in the county rankings (relatively less deprived since 2007)

As can be seen, the overall movement up or down the rankings presents a fairly balanced picture. Out of the county's 60 LSOAs in the most deprived 20% nationally, 33 have moved up the rankings (become relatively more deprived) and 25 have moved down the rankings (become relatively less deprived), with two showing no change.

Additionally, the changes highlighted in the previous map also come through in this analysis, with relative improvement being shown in the north east of the county, and a relatively worse picture in parts of Erewash and High Peak. In the 3 districts making up the north east of the county, there are 36 LSOAs in the most deprived 20% nationally (13 in Bolsover, 17 in Chesterfield and 6 in North-East Derbyshire) and over 60% of these show an improved relative ranking. However, for the 15 LSOAs in Erewash and High Peak in the most deprived 20% nationally, only 1 shows relative improvement.

### Overall IMD/domains – most and least deprived LSOAs

The changes between the IMD 2007 and IMD 2010 already noted at district level are reflected in analysis of the change in the number of LSOAs in the most deprived nationally between ID 2007 and ID 2010, with Chesterfield and Bolsover showing the greatest reductions in the number of LSOAs in the 20% most deprived in England. Additionally, the greatest increase is shown by Erewash.

#### Change in LSOAs between 2007 and 2010 by overall IMD – Derbyshire districts

District	Number of LSOAs in 10% most deprived nationally			Number of LSOAs in 20% most deprived nationally			Number of LSOAs in 10% least deprived nationally		
	2007	2010	Change 2010-2007	2007	2010	Change 2010-2007	2007	2010	Change 2010-2007
Amber Valley	1	1	0	6	7	1	5	5	0
Bolsover	6	5	-1	15	13	-2	0	0	0
Chesterfield	6	5	-1	21	17	-4	3	4	1
Derbyshire Dales	0	0	0	1	1	0	0	5	5
Erewash	1	3	2	7	12	5	6	7	1
High Peak	2	2	0	3	3	0	3	4	1
North East Derbyshire	0	1	1	6	6	0	7	11	4
South Derbyshire	0	0	0	2	1	-1	6	6	0

Analysis of change in the number of LSOAs in Derbyshire for each of the 10 deprivation measures shows only 3 of the measures showing an improvement in the number of the county's LSOAs in the 20% most deprived nationally.

The Health Deprivation and Disability domain is of particular interest, showing the greatest relative improvement in average rankings, as noted earlier, but a relatively worse picture for the most deprived LSOAs nationally; with there being 51 more LSOAs in the top 20% nationally in ID 2010 compared with ID 2007.

**Change in LSOAs between 2007 and 2010 by domains and sub-domains – Derbyshire**

Measure	Number of LSOAs in 10% most deprived nationally			Number of LSOAs in 20% most deprived nationally			Number of LSOAs in 10% least deprived nationally		
	2007	2010	Change 2010-2007	2007	2010	Change 2010-2007	2007	2010	Change 2010-2007
Overall IMD	16	17	1	61	60	-1	30	42	12
Income - Overall	11	13	2	51	60	9	37	37	0
Income Children	11	10	-1	43	49	6	50	53	3
Income - Older People	7	6	-1	41	32	-9	27	39	12
Employment	45	40	-5	95	98	3	16	17	1
Health and Disability	33	15	-18	84	55	-29	5	13	8
Education, Skills and Training	47	56	9	108	117	9	17	21	4
Barriers to Housing and Services	21	16	-5	45	35	-10	96	108	12
Crime	7	13	6	21	41	20	64	39	-25
The Living Environment	8	8	0	31	35	4	33	34	1



### List of indicators used to compile each of the domains

#### Income Deprivation domain

- Adults and children in Income Support Households
- Adults and children in Income-Based Job Seekers Allowance Households
- Adults and children in Pension Credit (Guarantee) Households
- Adults and children in those Working Tax Credit households where there are children in receipt of Child Tax Credit whose equivalised income (excluding housing benefits) is below 60 per cent of the median before housing costs
- Adults and children in Child Tax Credit Households (who are not eligible for IS, Income-Based JSA, Pension Credit or Working Tax Credit) whose equivalised income (excluding housing benefits) is below 60 per cent of the median before housing costs
- National Asylum Support Service (NASS) supported asylum seekers in England in receipt of subsistence support, accommodation support, or both

#### Employment Deprivation domain

- Recipients of Jobseekers Allowance (both contribution-based and income-based) for men aged 18–64 and women aged 18–59
- Participants in the New Deal for the 18–24s who are not in receipt of JSA
- Participants in the New Deal for 25+ who are not in receipt of JSA
- Participants in the New Deal for Lone Parents (after initial interview)
- Incapacity Benefit recipients aged 18–59 (women); 18–64 (men)
- Severe Disablement Allowance recipients aged 18–59 (women); 18–64 (men)

#### Health Deprivation and Disability

- Years of Potential Life Lost
- Comparative Illness and Disability Ratio
- Measures of acute morbidity, derived from Hospital Episode Statistics
- The proportion of adults under 60 suffering from mood or anxiety disorders based on prescribing, suicide mortality rate, hospital episode and health benefits data

## **Education, Skills and Training Deprivation domain**

### **Sub Domain: Children / Young People**

- Average test score of pupils at Key Stage 2
- Average test score of pupils at Key Stage 3
- Best of 8 average capped points score at Key Stage 4
- Proportion of young people not staying on in school or non-advanced education above the age of 16
- Secondary school absence rate
- Proportion of those aged under 21 not entering higher education

### **Sub Domain: Skills**

- Proportion of working age adults with no or low qualifications

## **Barriers to Housing and Services domain**

### **Sub Domain: Wider Barriers**

- Household overcrowding
- District level rate of acceptances under the homelessness provisions of the 1996 Housing Act
- Difficulty of Access to owner-occupation

### **Sub Domain: Geographical Barriers**

- Road distance to a GP surgery
- Road distance to a general store or supermarket
- Road distance to a primary school
- Road distance to a Post Office or sub post office

## **Crime domain**

- Burglary (4 recorded crime offence types)
- Theft (5 recorded crime offence types)
- Criminal damage (10 recorded crime offence types)
- Violence (14 recorded crime offence types)

## **Living Environment Deprivation domain**

### **Sub-Domain: The 'Indoors' living environment**

- Social and private housing in poor condition
- Houses without central heating

### **Sub-Domain: The 'Outdoors' living environment**

- Air quality
- Road traffic accidents involving injury to pedestrians and cyclists

## Appendix B

### Tables showing Derbyshire LSOAs in the top 20% nationally for the overall IMD, domains and supplementary indices

Table 1 - Overall IMD Score: Derbyshire LSOAs in the most deprived 20% nationally

LSOA	Ward containing LSOA	District	England rank (1 = most deprived)	England decile	County rank
E01019663	Ilkeston North	Erewash	785	1	1
E01019578	Rother	Chesterfield	1,041	1	2
E01019507	Shirebrook East	Bolsover	1,837	1	3
E01019729	Gamesley	High Peak	1,842	1	4
E01019728	Gamesley	High Peak	1,884	1	5
E01019444	Ironville & Riddings	Amber Valley	1,967	1	6
E01019509	Shirebrook North West	Bolsover	2,224	1	7
E01019561	Loundsley Green	Chesterfield	2,272	1	8
E01019488	Bolsover West	Bolsover	2,313	1	9
E01019498	Elmton-with-Creswell	Bolsover	2,458	1	10
E01019575	Rother	Chesterfield	2,486	1	11
E01019566	Middlecroft & Poolsbrook	Chesterfield	2,749	1	12
E01019662	Ilkeston Central	Erewash	2,936	1	13
E01019483	Bolsover North West	Bolsover	2,945	1	14
E01019799	Holmewood & Heath	NE Derbyshire	3,010	1	15
E01019650	Derby Rd West	Erewash	3,219	1	16
E01019527	Barrow Hill & New Whittington	Chesterfield	3,246	1	17
E01019664	Ilkeston North	Erewash	3,386	2	18
E01019572	Old Whittington	Chesterfield	3,411	2	19
E01019505	Scarcliffe	Bolsover	3,419	2	20
E01019510	Shirebrook North West	Bolsover	3,437	2	21
E01019568	Middlecroft & Poolsbrook	Chesterfield	3,452	2	22
E01019523	Whitwell	Bolsover	3,591	2	23
E01019625	Matlock St Giles	Derbyshire Dales	3,600	2	24
E01019581	St Helens	Chesterfield	3,767	2	25
E01019452	Langley Mill & Aldercar	Amber Valley	3,822	2	26
E01019808	North Wingfield Central	NE Derbyshire	3,929	2	27
E01019761	Stone Bench	High Peak	4,013	2	28
E01019668	Kirk Hallam	Erewash	4,107	2	29
E01019682	Nottingham Rd	Erewash	4,122	2	30
E01019469	Somercotes	Amber Valley	4,191	2	31
E01019796	Grassmoor	NE Derbyshire	4,208	2	32
E01019463	Ripley & Marehay	Amber Valley	4,371	2	33
E01019549	Hollingwood & Inkersall	Chesterfield	4,839	2	34
E01019775	Clay Cross North	NE Derbyshire	4,883	2	35
E01019699	Sawley	Erewash	4,942	2	36
E01019547	Hasland	Chesterfield	5,001	2	37
E01019511	Shirebrook South East	Bolsover	5,027	2	38
E01019556	Holmebrook	Chesterfield	5,160	2	39
E01019497	Elmton-with-Creswell	Bolsover	5,276	2	40
E01019646	Cotmanhay	Erewash	5,456	2	41
E01019584	St Leonards	Chesterfield	5,583	2	42
E01019403	Alfreton	Amber Valley	5,652	2	43
E01019863	Newhall & Stanton	South Derbyshire	5,710	2	44
E01019571	Moor	Chesterfield	5,795	2	45
E01019565	Lowgates & Woodthorpe	Chesterfield	5,859	2	46
E01019542	Dunston	Chesterfield	5,918	2	47
E01019500	Pinxton	Bolsover	5,972	2	48
E01019441	Heanor West	Amber Valley	6,122	2	49
E01019563	Lowgates & Woodthorpe	Chesterfield	6,125	2	50

E01019567	Middlecroft & Poolsbrook	Chesterfield	6,128	2	51
E01019688	Old Park	Erewash	6,172	2	52
E01019644	Cotmanhay	Erewash	6,221	2	53
E01019515	South Normanton East	Bolsover	6,238	2	54
E01019647	Derby Rd East	Erewash	6,244	2	55
E01019661	Ilkeston Central	Erewash	6,281	2	56
E01019508	Shirebrook Langwith	Bolsover	6,309	2	57
E01019777	Clay Cross South	NE Derbyshire	6,327	2	58
E01019401	Alfreton	Amber Valley	6,448	2	59
E01019817	Shirland	NE Derbyshire	6,494	2	60

**Table 2 - Income Deprivation: Derbyshire LSOAs in the most deprived 20% nationally**

LSOA	Ward containing LSOA	District	England rank (1 is most deprived)	England decile	County rank
E01019663	Ilkeston North	Erewash	757	1	1
E01019578	Rother	Chesterfield	1,185	1	2
E01019728	Gamesley	High Peak	1,403	1	3
E01019444	Ironville & Riddings	Amber Valley	1,733	1	4
E01019729	Gamesley	High Peak	1,809	1	5
E01019509	Shirebrook North West	Bolsover	1,931	1	6
E01019561	Loundsley Green	Chesterfield	2,102	1	7
E01019568	Middlecroft & Poolsbrook	Chesterfield	2,409	1	8
E01019575	Rother	Chesterfield	2,516	1	9
E01019664	Ilkeston North	Erewash	2,582	1	10
E01019625	Matlock St Giles	Derbyshire Dales	2,678	1	11
E01019650	Derby Rd West	Erewash	2,927	1	12
E01019498	Elmton-with-Creswell	Bolsover	3,103	1	13
E01019808	North Wingfield Central	NE Derbyshire	3,312	2	14
E01019761	Stone Bench	High Peak	3,351	2	15
E01019463	Ripley & Marehay	Amber Valley	3,445	2	16
E01019483	Bolsover North West	Bolsover	3,473	2	17
E01019796	Grassmoor	NE Derbyshire	3,524	2	18
E01019527	Barrow Hill & New Whittington	Chesterfield	3,641	2	19
E01019452	Langley Mill & Aldercar	Amber Valley	3,660	2	20
E01019469	Somercotes	Amber Valley	3,799	2	21
E01019799	Holmewood & Heath	NE Derbyshire	3,816	2	22
E01019488	Bolsover West	Bolsover	3,901	2	23
E01019572	Old Whittington	Chesterfield	4,202	2	24
E01019510	Shirebrook North West	Bolsover	4,223	2	25
E01019699	Sawley	Erewash	4,228	2	26
E01019581	St Helens	Chesterfield	4,272	2	27
E01019566	Middlecroft & Poolsbrook	Chesterfield	4,410	2	28
E01019507	Shirebrook East	Bolsover	4,563	2	29
E01019775	Clay Cross North	NE Derbyshire	4,585	2	30
E01019668	Kirk Hallam	Erewash	4,692	2	31
E01019563	Lowgates & Woodthorpe	Chesterfield	4,886	2	32
E01019556	Holmebrook	Chesterfield	4,973	2	33
E01019842	Hartshorne & Ticknall	South Derbyshire	5,030	2	34
E01019863	Newhall & Stanton	South Derbyshire	5,080	2	35
E01019403	Alfreton	Amber Valley	5,103	2	36
E01019459	Ripley	Amber Valley	5,183	2	37
E01019662	Ilkeston Central	Erewash	5,279	2	38
E01019692	Sandiacre North	Erewash	5,285	2	39
E01019646	Cotmanhay	Erewash	5,377	2	40
E01019818	Shirland	NE Derbyshire	5,411	2	41
E01019777	Clay Cross South	NE Derbyshire	5,441	2	42
E01019505	Scarcliffe	Bolsover	5,612	2	43
E01019547	Hasland	Chesterfield	5,620	2	44
E01019453	Langley Mill & Aldercar	Amber Valley	5,689	2	45
E01019682	Nottingham Rd	Erewash	5,706	2	46
E01019730	Hadfield North	High Peak	5,776	2	47
E01019571	Moor	Chesterfield	5,951	2	48
E01019817	Shirland	NE Derbyshire	5,958	2	49
E01019511	Shirebrook South East	Bolsover	5,969	2	50
E01019565	Lowgates & Woodthorpe	Chesterfield	5,997	2	51
E01019549	Hollingwood & Inkersall	Chesterfield	6,022	2	52
E01019523	Whitwell	Bolsover	6,182	2	53
E01019576	Rother	Chesterfield	6,267	2	54
E01019500	Pinxton	Bolsover	6,269	2	55
E01019492	Clowne North	Bolsover	6,341	2	56

E01019536	Brimington South	Chesterfield	6,348	2	57
E01019471	Somercotes	Amber Valley	6,372	2	58
E01019858	Midway	South Derbyshire	6,408	2	59
E01019580	St Helens	Chesterfield	6,449	2	60

**Table 3 - Income Deprivation Affecting Children Index: Derbyshire LSOAs in the most deprived 20% nationally**

LSOA	Ward containing LSOA	District	England rank (1 is most deprived)	England decile	County rank
E01019663	Ilkeston North	Erewash	1,607	1	1
E01019498	Elmton-with-Creswell	Bolsover	1,616	1	2
E01019729	Gamesley	High Peak	1,715	1	3
E01019664	Ilkeston North	Erewash	1,787	1	4
E01019578	Rother	Chesterfield	1,888	1	5
E01019509	Shirebrook North West	Bolsover	1,988	1	6
E01019444	Ironville & Riddings	Amber Valley	2,351	1	7
E01019483	Bolsover North West	Bolsover	2,617	1	8
E01019568	Middlecroft & Poolsbrook	Chesterfield	2,895	1	9
E01019650	Derby Rd West	Erewash	3,010	1	10
E01019808	North Wingfield Central	NE Derbyshire	3,309	2	11
E01019575	Rother	Chesterfield	3,320	2	12
E01019728	Gamesley	High Peak	3,825	2	13
E01019799	Holmewood & Heath	NE Derbyshire	3,893	2	14
E01019469	Somercotes	Amber Valley	3,899	2	15
E01019561	Loundsley Green	Chesterfield	4,076	2	16
E01019563	Lowgates & Woodthorpe	Chesterfield	4,087	2	17
E01019527	Barrow Hill & New Whittington	Chesterfield	4,251	2	18
E01019463	Ripley & Marehay	Amber Valley	4,330	2	19
E01019625	Matlock St Giles	Derbyshire Dales	4,393	2	20
E01019858	Midway	South Derbyshire	4,425	2	21
E01019775	Clay Cross North	NE Derbyshire	4,461	2	22
E01019761	Stone Bench	High Peak	4,557	2	23
E01019459	Ripley	Amber Valley	4,579	2	24
E01019842	Hartshorne & Ticknall	South Derbyshire	4,649	2	25
E01019646	Cotmanhay	Erewash	4,673	2	26
E01019796	Grassmoor	NE Derbyshire	4,764	2	27
E01019511	Shirebrook South East	Bolsover	4,820	2	28
E01019492	Clowne North	Bolsover	4,904	2	29
E01019452	Langley Mill & Aldercar	Amber Valley	4,994	2	30
E01019665	Ilkeston North	Erewash	5,043	2	31
E01019453	Langley Mill & Aldercar	Amber Valley	5,090	2	32
E01019488	Bolsover West	Bolsover	5,105	2	33
E01019403	Alfreton	Amber Valley	5,176	2	34
E01019818	Shirland	NE Derbyshire	5,221	2	35
E01019692	Sandiacre North	Erewash	5,259	2	36
E01019505	Scarcliffe	Bolsover	5,413	2	37
E01019400	Alfreton	Amber Valley	5,439	2	38
E01019682	Nottingham Rd	Erewash	5,481	2	39
E01019699	Sawley	Erewash	5,513	2	40
E01019572	Old Whittington	Chesterfield	5,525	2	41
E01019730	Hadfield North	High Peak	5,590	2	42
E01019777	Clay Cross South	NE Derbyshire	5,684	2	43
E01019503	Pleasley	Bolsover	5,755	2	44
E01019662	Ilkeston Central	Erewash	6,148	2	45
E01019471	Somercotes	Amber Valley	6,174	2	46
E01019497	Elmton-with-Creswell	Bolsover	6,256	2	47
E01019549	Hollingwood & Inkersall	Chesterfield	6,316	2	48
E01019547	Hasland	Chesterfield	6,463	2	49

**Table 4 - Income Deprivation Affecting Older People Index: Derbyshire LSOAs in the most deprived 20% nationally**

LSOA	Ward containing LSOA	District	England rank (1 is most deprived)	England decile	County rank
E01019728	Gamesley	High Peak	616	1	1
E01019561	Loundsley Green	Chesterfield	1,636	1	2
E01019578	Rother	Chesterfield	2,257	1	3
E01019663	Ilkeston North	Erewash	2,735	1	4
E01019625	Matlock St Giles	Derbyshire Dales	3,083	1	5
E01019581	St Helens	Chesterfield	3,181	1	5
E01019568	Middlecroft & Poolsbrook	Chesterfield	3,418	2	7
E01019536	Brimington South	Chesterfield	3,502	2	7
E01019556	Holmebrook	Chesterfield	3,691	2	9
E01019729	Gamesley	High Peak	4,156	2	10
E01019555	Holmebrook	Chesterfield	4,341	2	11
E01019575	Rother	Chesterfield	4,460	2	11
E01019471	Somercotes	Amber Valley	4,804	2	13
E01019469	Somercotes	Amber Valley	4,927	2	13
E01019452	Langley Mill & Aldercar	Amber Valley	4,974	2	13
E01019579	St Helens	Chesterfield	5,002	2	13
E01019730	Hadfield North	High Peak	5,120	2	17
E01019444	Ironville & Riddings	Amber Valley	5,184	2	17
E01019507	Shirebrook East	Bolsover	5,236	2	17
E01019510	Shirebrook North West	Bolsover	5,415	2	17
E01019682	Nottingham Rd	Erewash	5,435	2	17
E01019441	Heanor West	Amber Valley	5,458	2	17
E01019808	North Wingfield Central	NE Derbyshire	5,472	2	23
E01019572	Old Whittington	Chesterfield	5,660	2	23
E01019768	Whitfield	High Peak	5,718	2	23
E01019668	Kirk Hallam	Erewash	5,884	2	26
E01019401	Alfreton	Amber Valley	6,010	2	26
E01019527	Barrow Hill & New Whittington	Chesterfield	6,114	2	26
E01019565	Lowgates & Woodthorpe	Chesterfield	6,160	2	26
E01019662	Ilkeston Central	Erewash	6,296	2	26
E01019743	New Mills East	High Peak	6,330	2	31
E01019463	Ripley & Marehay	Amber Valley	6,346	2	31



**Table 5 - Employment Deprivation: Derbyshire LSOAs in the most deprived 20% nationally**

LSOA	Ward containing LSOA	District	England rank (1 is most deprived)	England decile	County rank
E01019561	Loundsley Green	Chesterfield	320	1	1
E01019578	Rother	Chesterfield	463	1	2
E01019509	Shirebrook North West	Bolsover	595	1	3
E01019507	Shirebrook East	Bolsover	686	1	4
E01019663	Ilkeston North	Erewash	741	1	5
E01019523	Whitwell	Bolsover	937	1	6
E01019799	Holmewood & Heath	NE Derbyshire	998	1	7
E01019444	Ironville & Riddings	Amber Valley	1040	1	8
E01019728	Gamesley	High Peak	1,066	1	9
E01019566	Middlecroft & Poolsbrook	Chesterfield	1,107	1	10
E01019488	Bolsover West	Bolsover	1,170	1	11
E01019581	St Helens	Chesterfield	1,400	1	12
E01019527	Barrow Hill & New Whittington	Chesterfield	1,556	1	13
E01019510	Shirebrook North West	Bolsover	1,619	1	14
E01019729	Gamesley	High Peak	1,675	1	15
E01019808	North Wingfield Central	NE Derbyshire	1,819	1	16
E01019668	Kirk Hallam	Erewash	2,038	1	17
E01019775	Clay Cross North	NE Derbyshire	2,109	1	18
E01019505	Scarcliffe	Bolsover	2,143	1	19
E01019796	Grassmoor	NE Derbyshire	2,152	1	20
E01019452	Langley Mill & Aldercar	Amber Valley	2,163	1	21
E01019575	Rother	Chesterfield	2,185	1	22
E01019572	Old Whittington	Chesterfield	2,231	1	23
E01019483	Bolsover North West	Bolsover	2,316	1	24
E01019650	Derby Rd West	Erewash	2,403	1	25
E01019625	Matlock St Giles	Derbyshire Dales	2,603	1	26
E01019565	Lowgates & Woodthorpe	Chesterfield	2,629	1	27
E01019562	Loundsley Green	Chesterfield	2,638	1	28
E01019568	Middlecroft & Poolsbrook	Chesterfield	2,660	1	29
E01019576	Rother	Chesterfield	2,723	1	30
E01019699	Sawley	Erewash	2,786	1	31
E01019556	Holmebrook	Chesterfield	2,813	1	32
E01019508	Shirebrook Langwith	Bolsover	2,824	1	33
E01019511	Shirebrook South East	Bolsover	2,831	1	34
E01019817	Shirland	NE Derbyshire	2,845	1	35
E01019498	Elmton-with-Creswell	Bolsover	3,014	1	36
E01019863	Newhall & Stanton	South Derbyshire	3,075	1	37
E01019662	Ilkeston Central	Erewash	3,091	1	38
E01019542	Dunston	Chesterfield	3,139	1	39
E01019543	Dunston	Chesterfield	3,194	1	40
E01019567	Middlecroft & Poolsbrook	Chesterfield	3,322	2	41
E01019761	Stone Bench	High Peak	3,344	2	42
E01019469	Somercotes	Amber Valley	3,380	2	43
E01019777	Clay Cross South	NE Derbyshire	3,393	2	44
E01019497	Elmton-with-Creswell	Bolsover	3,612	2	45
E01019571	Moor	Chesterfield	3,616	2	46
E01019463	Ripley & Marehay	Amber Valley	3,712	2	47
E01019664	Ilkeston North	Erewash	3,732	2	48
E01019549	Hollingwood & Inkersall	Chesterfield	3,840	2	49
E01019547	Hasland	Chesterfield	3,888	2	50
E01019495	Elmton-with-Creswell	Bolsover	3,988	2	51
E01019797	Grassmoor	NE Derbyshire	4,039	2	52
E01019404	Alfreton	Amber Valley	4,075	2	53
E01019500	Pinxton	Bolsover	4,122	2	54

E01019492	Clowne North	Bolsover	4,126	2	55
E01019531	Brimington North	Chesterfield	4,140	2	56
E01019768	Whitfield	High Peak	4,393	2	57
E01019644	Cotmanhay	Erewash	4,487	2	58
E01019484	Bolsover North West	Bolsover	4,531	2	59
E01019441	Heanor West	Amber Valley	4,550	2	60
E01019487	Bolsover South	Bolsover	4,558	2	61
E01019538	Brockwell	Chesterfield	4,567	2	62
E01019401	Alfreton	Amber Valley	4,605	2	63
E01019682	Nottingham Rd	Erewash	4,655	2	64
E01019496	Elmton-with-Creswell	Bolsover	4,668	2	65
E01019459	Ripley	Amber Valley	4,673	2	66
E01019506	Scarcliffe	Bolsover	4,687	2	67
E01019776	Clay Cross South	NE Derbyshire	4,791	2	68
E01019580	St Helens	Chesterfield	4,795	2	69
E01019579	St Helens	Chesterfield	4,797	2	70
E01019646	Cotmanhay	Erewash	4,840	2	71
E01019842	Hartshorne & Ticknall	South Derbyshire	4,842	2	72
E01019688	Old Park	Erewash	4,908	2	73
E01019503	Pleasley	Bolsover	5,089	2	74
E01019569	Moor	Chesterfield	5,165	2	75
E01019515	South Normanton East	Bolsover	5,168	2	76
E01019584	St Leonards	Chesterfield	5,179	2	77
E01019730	Hadfield North	High Peak	5,317	2	78
E01019826	Tupton	NE Derbyshire	5,370	2	79
E01019563	Lowgates & Woodthorpe	Chesterfield	5,376	2	80
E01019536	Brimington South	Chesterfield	5,451	2	81
E01019647	Derby Rd East	Erewash	5,458	2	82
E01019818	Shirland	NE Derbyshire	5,490	2	83
E01019552	Hollingwood & Inkersall	Chesterfield	5,541	2	84
E01019856	Midway	South Derbyshire	5,573	2	85
E01019403	Alfreton	Amber Valley	5,638	2	86
E01019792	Eckington South	NE Derbyshire	5,698	2	87
E01019550	Hollingwood & Inkersall	Chesterfield	5,786	2	88
E01019400	Alfreton	Amber Valley	5,826	2	89
E01019512	Shirebrook South West	Bolsover	5,907	2	90
E01019450	Kilburn	Amber Valley	5,913	2	91
E01019437	Heanor East	Amber Valley	5,940	2	92
E01019541	Dunston	Chesterfield	5,941	2	93
E01019687	Ockbrook & Borrowash	Erewash	6,033	2	94
E01019522	Tibshelf	Bolsover	6,285	2	95
E01019858	Midway	South Derbyshire	6,317	2	96
E01019739	Howard Town	High Peak	6,319	2	97
E01019468	Somercotes	Amber Valley	6,411	2	98

**Table 6 - Health Deprivation and Disability: Derbyshire LSOAs in the most deprived 20% nationally**

LSOA	Ward containing LSOA	District	England rank (1 is most deprived)	England decile	County rank
E01019578	Rother	Chesterfield	1,094	1	1
E01019561	Loundsley Green	Chesterfield	1,677	1	2
E01019523	Whitwell	Bolsover	2,019	1	3
E01019799	Holmewood & Heath	NE Derbyshire	2,038	1	4
E01019547	Hasland	Chesterfield	2,232	1	5
E01019509	Shirebrook North West	Bolsover	2,271	1	6
E01019581	St Helens	Chesterfield	2,350	1	7
E01019729	Gamesley	High Peak	2,354	1	8
E01019452	Langley Mill & Aldercar	Amber Valley	2,409	1	9
E01019507	Shirebrook East	Bolsover	2,529	1	10
E01019575	Rother	Chesterfield	2,701	1	11
E01019572	Old Whittington	Chesterfield	2,807	1	12
E01019728	Gamesley	High Peak	2,809	1	13
E01019663	Ilkeston North	Erewash	3,123	1	14
E01019527	Barrow Hill & New Whittington	Chesterfield	3,145	1	15
E01019730	Hadfield North	High Peak	3,468	2	16
E01019510	Shirebrook North West	Bolsover	3,577	2	17
E01019761	Stone Bench	High Peak	3,610	2	18
E01019566	Middlecroft & Poolsbrook	Chesterfield	3,698	2	19
E01019505	Scarcliffe	Bolsover	3,788	2	20
E01019796	Grassmoor	NE Derbyshire	3,873	2	21
E01019483	Bolsover North West	Bolsover	4,039	2	22
E01019498	Elmton-with-Creswell	Bolsover	4,120	2	23
E01019542	Dunston	Chesterfield	4,124	2	24
E01019538	Brockwell	Chesterfield	4,160	2	25
E01019717	Buxton Central	High Peak	4,270	2	26
E01019556	Holmebrook	Chesterfield	4,480	2	27
E01019444	Ironville & Riddings	Amber Valley	4,486	2	28
E01019497	Elmton-with-Creswell	Bolsover	4,759	2	29
E01019579	St Helens	Chesterfield	4,878	2	30
E01019488	Bolsover West	Bolsover	4,973	2	31
E01019568	Middlecroft & Poolsbrook	Chesterfield	5,066	2	32
E01019668	Kirk Hallam	Erewash	5,103	2	33
E01019534	Brimington South	Chesterfield	5,232	2	34
E01019863	Newhall & Stanton	South Derbyshire	5,330	2	35
E01019571	Moor	Chesterfield	5,521	2	36
E01019768	Whitfield	High Peak	5,528	2	37
E01019515	South Normanton East	Bolsover	5,589	2	38
E01019563	Lowgates & Woodthorpe	Chesterfield	5,594	2	39
E01019492	Clowne North	Bolsover	5,626	2	40
E01019743	New Mills East	High Peak	5,628	2	41
E01019500	Pinxton	Bolsover	5,709	2	42
E01019567	Middlecroft & Poolsbrook	Chesterfield	5,756	2	43
E01019662	Ilkeston Central	Erewash	5,766	2	44
E01019650	Derby Rd West	Erewash	5,848	2	45
E01019565	Lowgates & Woodthorpe	Chesterfield	5,907	2	46
E01019403	Alfreton	Amber Valley	5,958	2	47
E01019739	Howard Town	High Peak	5,960	2	48
E01019664	Ilkeston North	Erewash	5,966	2	49
E01019759	Stone Bench	High Peak	6,057	2	50
E01019495	Elmton-with-Creswell	Bolsover	6,133	2	51
E01019562	Loundsley Green	Chesterfield	6,152	2	52
E01019777	Clay Cross South	NE Derbyshire	6,200	2	53
E01019775	Clay Cross North	NE Derbyshire	6,449	2	54

E01019576	Rother	Chesterfield	6,484	2	55
-----------	--------	--------------	-------	---	----

**Table 7 - Education, Skills and Training Deprivation: Derbyshire LSOAs in the most deprived 20% nationally**

LSOA	Ward containing LSOA	District	England rank (1 is most deprived)	England decile	County rank
E01019663	Ilkeston North	Erewash	22	1	1
E01019498	Elmton-with-Creswell	Bolsover	291	1	2
E01019463	Ripley & Marehay	Amber Valley	384	1	3
E01019469	Somercotes	Amber Valley	441	1	4
E01019664	Ilkeston North	Erewash	534	1	5
E01019666	Kirk Hallam	Erewash	696	1	6
E01019729	Gamesley	High Peak	818	1	7
E01019575	Rother	Chesterfield	855	1	8
E01019488	Bolsover West	Bolsover	888	1	9
E01019578	Rother	Chesterfield	1,013	1	10
E01019572	Old Whittington	Chesterfield	1,015	1	11
E01019646	Cotmanhay	Erewash	1,032	1	12
E01019625	Matlock St Giles	Derbyshire Dales	1,095	1	13
E01019510	Shirebrook North West	Bolsover	1,127	1	14
E01019668	Kirk Hallam	Erewash	1,173	1	15
E01019728	Gamesley	High Peak	1,195	1	16
E01019500	Pinxton	Bolsover	1,201	1	17
E01019505	Scarcliffe	Bolsover	1,219	1	18
E01019808	North Wingfield Central	NE Derbyshire	1,244	1	19
E01019650	Derby Rd West	Erewash	1,324	1	20
E01019444	Ironville & Riddings	Amber Valley	1,331	1	21
E01019568	Middlecroft & Poolsbrook	Chesterfield	1,350	1	22
E01019515	South Normanton East	Bolsover	1,474	1	23
E01019644	Cotmanhay	Erewash	1,477	1	24
E01019796	Grassmoor	NE Derbyshire	1,480	1	25
E01019566	Middlecroft & Poolsbrook	Chesterfield	1,631	1	26
E01019452	Langley Mill & Aldercar	Amber Valley	1,647	1	27
E01019807	Killamarsh West	NE Derbyshire	1,690	1	28
E01019471	Somercotes	Amber Valley	1,714	1	29
E01019817	Shirland	NE Derbyshire	1,803	1	30
E01019775	Clay Cross North	NE Derbyshire	1,858	1	31
E01019400	Alfreton	Amber Valley	1,876	1	32
E01019761	Stone Bench	High Peak	1,907	1	33
E01019403	Alfreton	Amber Valley	1,977	1	34
E01019507	Shirebrook East	Bolsover	2,012	1	35
E01019509	Shirebrook North West	Bolsover	2,026	1	36
E01019483	Bolsover North West	Bolsover	2,032	1	37
E01019838	Church Gresley	South Derbyshire	2,038	1	38
E01019549	Hollingwood & Inkersall	Chesterfield	2,113	1	39
E01019563	Lowgates & Woodthorpe	Chesterfield	2,123	1	40
E01019441	Heanor West	Amber Valley	2,166	1	41
E01019508	Shirebrook Langwith	Bolsover	2,206	1	42
E01019777	Clay Cross South	NE Derbyshire	2,212	1	43
E01019497	Elmton-with-Creswell	Bolsover	2,312	1	44
E01019799	Holmewood & Heath	NE Derbyshire	2,415	1	45
E01019688	Old Park	Erewash	2,646	1	46
E01019499	Pinxton	Bolsover	2,692	1	47
E01019453	Langley Mill & Aldercar	Amber Valley	2,786	1	48
E01019522	Tibshelf	Bolsover	2,880	1	49
E01019511	Shirebrook South East	Bolsover	2,964	1	50
E01019856	Midway	South Derbyshire	2,979	1	51
E01019492	Clowne North	Bolsover	2,991	1	52
E01019842	Hartshorne & Ticknall	South Derbyshire	3,185	1	53

E01019527	Barrow Hill & New Whittington	Chesterfield	3,203	1	54
E01019531	Brimington North	Chesterfield	3,217	1	55
E01019667	Kirk Hallam	Erewash	3,238	1	56
E01019523	Whitwell	Bolsover	3,255	2	57
E01019818	Shirland	NE Derbyshire	3,301	2	58
E01019662	Ilkeston Central	Erewash	3,313	2	59
E01019692	Sandiacre North	Erewash	3,350	2	60
E01019803	Killamarsh East	NE Derbyshire	3,396	2	61
E01019571	Moor	Chesterfield	3,436	2	62
E01019863	Newhall & Stanton	South Derbyshire	3,481	2	63
E01019556	Holmebrook	Chesterfield	3,552	2	64
E01019826	Tupton	NE Derbyshire	3,580	2	65
E01019858	Midway	South Derbyshire	3,581	2	66
E01019431	Heanor & Loscoe	Amber Valley	3,790	2	67
E01019433	Heanor & Loscoe	Amber Valley	3,808	2	68
E01019699	Sawley	Erewash	3,822	2	69
E01019580	St Helens	Chesterfield	3,920	2	70
E01019496	Elmton-with-Creswell	Bolsover	3,969	2	71
E01019864	Newhall & Stanton	South Derbyshire	3,980	2	72
E01019773	Clay Cross North	NE Derbyshire	4,039	2	73
E01019543	Dunston	Chesterfield	4,332	2	74
E01019813	Pilsley & Morton	NE Derbyshire	4,336	2	75
E01019776	Clay Cross South	NE Derbyshire	4,345	2	76
E01019420	Codnor & Waingroves	Amber Valley	4,370	2	77
E01019743	New Mills East	High Peak	4,404	2	78
E01019401	Alfreton	Amber Valley	4,409	2	79
E01019689	Old Park	Erewash	4,423	2	80
E01019687	Ockbrook & Borrowash	Erewash	4,574	2	81
E01019851	Linton	South Derbyshire	4,581	2	82
E01019468	Somercotes	Amber Valley	4,613	2	83
E01019665	Ilkeston North	Erewash	4,638	2	84
E01019516	South Normanton West	Bolsover	4,647	2	85
E01019481	Blackwell	Bolsover	4,729	2	86
E01019565	Lowgates & Woodthorpe	Chesterfield	4,821	2	87
E01019661	Ilkeston Central	Erewash	4,832	2	88
E01019797	Grassmoor	NE Derbyshire	4,897	2	89
E01019437	Heanor East	Amber Valley	4,979	2	90
E01019657	Hallam Fields	Erewash	4,991	2	91
E01019506	Scarcliffe	Bolsover	5,040	2	92
E01019824	Tupton	NE Derbyshire	5,085	2	93
E01019810	North Wingfield Central	NE Derbyshire	5,104	2	94
E01019800	Holmewood & Heath	NE Derbyshire	5,213	2	95
E01019759	Stone Bench	High Peak	5,214	2	96
E01019503	Pleasley	Bolsover	5,335	2	97
E01019459	Ripley	Amber Valley	5,350	2	98
E01019541	Dunston	Chesterfield	5,505	2	99
E01019512	Shirebrook South West	Bolsover	5,574	2	100
E01019792	Eckington South	NE Derbyshire	5,600	2	101
E01019660	Ilkeston Central	Erewash	5,681	2	102
E01019495	Elmton-with-Creswell	Bolsover	5,784	2	103
E01019445	Ironville & Riddings	Amber Valley	5,847	2	104
E01019501	Pinxton	Bolsover	5,885	2	105
E01019442	Ironville & Riddings	Amber Valley	5,988	2	106
E01019647	Derby Rd East	Erewash	6,054	2	107
E01019574	Old Whittington	Chesterfield	6,064	2	108
E01019567	Middlecroft & Poolsbrook	Chesterfield	6,095	2	109
E01019594	Ashbourne North	Derbyshire Dales	6,172	2	110
E01019404	Alfreton	Amber Valley	6,251	2	111
E01019487	Bolsover South	Bolsover	6,261	2	112
E01019768	Whitfield	High Peak	6,293	2	113

E01019456	Ripley	Amber Valley	6,383	2	114
E01019633	Wirksworth	Derbyshire Dales	6,404	2	115
E01019417	Belper South	Amber Valley	6,453	2	116
E01019724	Cote Heath	High Peak	6,496	2	117

**Table 8 - Barriers to Housing and Services: Derbyshire LSOAs in the most deprived 20% nationally**

<b>LSOA</b>	<b>Ward containing LSOA</b>	<b>District</b>	<b>England rank</b> (1 is most deprived)	<b>England decile</b>	<b>County rank</b>
E01019605	Carsington Water	Derbyshire Dales	67	1	1
E01019613	Hartington & Taddington	Derbyshire Dales	92	1	2
E01019629	Norbury	Derbyshire Dales	169	1	3
E01019611	Dovedale & Parwich	Derbyshire Dales	452	1	4
E01019866	North West	South Derbyshire	1,262	1	5
E01019616	Hulland	Derbyshire Dales	1,350	1	6
E01019607	Clifton & Bradley	Derbyshire Dales	1,417	1	7
E01019405	Alport	Amber Valley	1,458	1	8
E01019620	Masson	Derbyshire Dales	2,063	1	9
E01019843	Hartshorne & Ticknall	South Derbyshire	2,150	1	10
E01019617	Lathkill & Bradford	Derbyshire Dales	2,464	1	11
E01019603	Brailsford	Derbyshire Dales	2,597	1	12
E01019618	Litton & Longstone	Derbyshire Dales	2,959	1	13
E01019630	Stanton	Derbyshire Dales	2,971	1	14
E01019713	Blackbrook	High Peak	3,129	1	15
E01019726	Cote Heath	High Peak	3,145	1	16
E01019596	Ashbourne South	Derbyshire Dales	3,269	2	17
E01019736	Hope Valley	High Peak	3,492	2	18
E01019627	Matlock St Giles	Derbyshire Dales	3,524	2	19
E01019472	South West Parishes	Amber Valley	3,765	2	20
E01019868	Repton	South Derbyshire	4,105	2	21
E01019742	Limestone Peak	High Peak	4,738	2	22
E01019477	Wingfield	Amber Valley	4,755	2	23
E01019867	Repton	South Derbyshire	4,974	2	24
E01019547	Hasland	Chesterfield	5,126	2	25
E01019714	Burbage	High Peak	5,130	2	26
E01019612	Doveridge & Sudbury	Derbyshire Dales	5,136	2	27
E01019557	Linacre	Chesterfield	5,197	2	28
E01019609	Darley Dale	Derbyshire Dales	5,529	2	29
E01019839	Etwall	South Derbyshire	5,589	2	30
E01019506	Scarcliffe	Bolsover	5,735	2	31
E01019735	Hope Valley	High Peak	5,781	2	32
E01019769	Ashover	NE Derbyshire	6,040	2	33
E01019832	Aston	South Derbyshire	6,147	2	34
E01019597	Ashbourne South	Derbyshire Dales	6,410	2	35



**Table 9 - Crime: Derbyshire LSOAs in the most deprived 20% nationally**

LSOA	Ward containing LSOA	District	England rank (1 is most deprived)	England decile	County rank
E01019507	Shirebrook East	Bolsover	258	1	1
E01019682	Nottingham Rd	Erewash	392	1	2
E01019584	St Leonards	Chesterfield	573	1	3
E01019661	Ilkeston Central	Erewash	1,079	1	4
E01019662	Ilkeston Central	Erewash	1,179	1	5
E01019401	Alfreton	Amber Valley	1,794	1	6
E01019549	Hollingwood & Inkersall	Chesterfield	1,903	1	7
E01019511	Shirebrook South East	Bolsover	2,161	1	8
E01019483	Bolsover North West	Bolsover	2,287	1	9
E01019488	Bolsover West	Bolsover	2,535	1	10
E01019458	Ripley	Amber Valley	2,661	1	11
E01019498	Elmton-with-Creswell	Bolsover	2,897	1	12
E01019444	Ironville & Riddings	Amber Valley	3,086	1	13
E01019567	Middlecroft & Poolsbrook	Chesterfield	3,298	2	14
E01019665	Ilkeston North	Erewash	3,396	2	15
E01019672	Little Hallam	Erewash	3,556	2	16
E01019729	Gamesley	High Peak	3,699	2	17
E01019566	Middlecroft & Poolsbrook	Chesterfield	3,947	2	18
E01019497	Elmton-with-Creswell	Bolsover	3,970	2	19
E01019877	Swadlincote	South Derbyshire	4,233	2	20
E01019657	Hallam Fields	Erewash	4,332	2	21
E01019660	Ilkeston Central	Erewash	4,342	2	22
E01019404	Alfreton	Amber Valley	4,396	2	23
E01019647	Derby Rd East	Erewash	4,444	2	24
E01019673	Little Hallam	Erewash	4,813	2	25
E01019579	St Helens	Chesterfield	5,060	2	26
E01019581	St Helens	Chesterfield	5,110	2	27
E01019663	Ilkeston North	Erewash	5,343	2	28
E01019571	Moor	Chesterfield	5,531	2	29
E01019520	Tibshelf	Bolsover	5,637	2	30
E01019568	Middlecroft & Poolsbrook	Chesterfield	5,688	2	31
E01019651	Derby Rd West	Erewash	5,839	2	32
E01019455	Ripley	Amber Valley	5,856	2	33
E01019544	Dunston	Chesterfield	5,890	2	34
E01019538	Brockwell	Chesterfield	5,949	2	35
E01019494	Clowne South	Bolsover	6,010	2	36
E01019688	Old Park	Erewash	6,040	2	37
E01019491	Clowne North	Bolsover	6,045	2	38
E01019716	Buxton Central	High Peak	6,052	2	39
E01019690	Old Park	Erewash	6,210	2	40
E01019569	Moor	Chesterfield	6,383	2	41

**Table 10 - Living Environment Deprivation: Derbyshire LSOAs in the most deprived 20% nationally**

<b>LSOA</b>	<b>Ward containing LSOA</b>	<b>District</b>	<b>England rank</b> (1 is most deprived)	<b>England decile</b>	<b>County rank</b>
E01019662	Ilkeston Central	Erewash	731	1	1
E01019661	Ilkeston Central	Erewash	1,040	1	2
E01019682	Nottingham Rd	Erewash	1,207	1	3
E01019647	Derby Rd East	Erewash	1,385	1	4
E01019679	Nottingham Rd	Erewash	2,385	1	5
E01019739	Howard Town	High Peak	2,782	1	6
E01019569	Moor	Chesterfield	3,085	1	7
E01019695	Sandiacre South	Erewash	3,221	1	8
E01019407	Belper Central	Amber Valley	3,283	2	9
E01019672	Little Hallam	Erewash	3,298	2	10
E01019690	Old Park	Erewash	3,320	2	11
E01019742	Limestone Peak	High Peak	3,915	2	12
E01019649	Derby Rd East	Erewash	4,226	2	13
E01019505	Scarcliffe	Bolsover	4,322	2	14
E01019538	Brockwell	Chesterfield	4,359	2	15
E01019657	Hallam Fields	Erewash	4,405	2	16
E01019688	Old Park	Erewash	4,605	2	17
E01019693	Sandiacre North	Erewash	4,719	2	18
E01019675	Long Eaton Central	Erewash	4,999	2	19
E01019748	New Mills West	High Peak	5,135	2	20
E01019738	Howard Town	High Peak	5,148	2	21
E01019680	Nottingham Rd	Erewash	5,201	2	22
E01019699	Sawley	Erewash	5,683	2	23
E01019667	Kirk Hallam	Erewash	5,707	2	24
E01019455	Ripley	Amber Valley	5,751	2	25
E01019736	Hope Valley	High Peak	5,805	2	26
E01019553	Hollingwood & Inkersall	Chesterfield	5,992	2	27
E01019453	Langley Mill & Aldercar	Amber Valley	6,135	2	28
E01019607	Clifton & Bradley	Derbyshire Dales	6,195	2	29
E01019429	Heage & Ambergate	Amber Valley	6,196	2	30
E01019658	Hallam Fields	Erewash	6,230	2	31
E01019458	Ripley	Amber Valley	6,267	2	32
E01019611	Dovedale & Parwich	Derbyshire Dales	6,386	2	33
E01019854	Melbourne	South Derbyshire	6,436	2	34
E01019650	Derby Rd West	Erewash	6,463	2	35

## Appendix C

### Tables showing Derbyshire LSOAs in the bottom 10% nationally for the overall IMD, domains and supplementary indices

Table 11 - Overall IMD Score - Derbyshire LSOAs in the least deprived 10% nationally

LSOA	Ward containing LSOA	District	England rank (1 = most deprived)	England decile	County rank
E01019606	Chatsworth	Derbyshire Dales	29,236	10	445
E01019624	Matlock All Saints	Derbyshire Dales	29,243	10	446
E01019839	Etwall	South Derbyshire	29,295	10	447
E01019835	Aston	South Derbyshire	29,334	10	448
E01019659	Hallam Fields	Erewash	29,362	10	449
E01019604	Calver	Derbyshire Dales	29,449	10	450
E01019829	Wingerworth	NE Derbyshire	29,585	10	451
E01019708	Wilsthorpe	Erewash	29,622	10	452
E01019614	Hathersage and Eyam	Derbyshire Dales	29,671	10	453
E01019684	Ockbrook and Borrowwash	Erewash	29,725	10	454
E01019778	Coal Aston	NE Derbyshire	29,738	10	455
E01019849	Hilton	South Derbyshire	29,786	10	456
E01019588	Walton	Chesterfield	29,803	10	457
E01019712	Blackbrook	High Peak	29,837	10	458
E01019610	Darley Dale	Derbyshire Dales	29,911	10	459
E01019749	Old Glossop	High Peak	30,060	10	460
E01019787	Dronfield Woodhouse	NE Derbyshire	30,114	10	461
E01019473	Swanwick	Amber Valley	30,181	10	462
E01019785	Dronfield South	NE Derbyshire	30,259	10	463
E01019831	Wingerworth	NE Derbyshire	30,330	10	464
E01019702	West Hallam and Dale Abbey	Erewash	30,538	10	465
E01019559	Linacre	Chesterfield	30,611	10	466
E01019828	Wingerworth	NE Derbyshire	30,715	10	467
E01019587	Walton	Chesterfield	30,724	10	468
E01019637	Abbotsford	Erewash	30,737	10	469
E01019727	Dinting	High Peak	30,941	10	470
E01019425	Duffield	Amber Valley	31,026	10	471
E01019793	Gosforth Valley	NE Derbyshire	31,189	10	472
E01019427	Duffield	Amber Valley	31,282	10	473
E01019794	Gosforth Valley	NE Derbyshire	31,311	10	474
E01019783	Dronfield South	NE Derbyshire	31,385	10	475
E01019592	West	Chesterfield	31,409	10	476
E01019686	Ockbrook and Borrowwash	Erewash	31,419	10	477
E01019413	Belper East	Amber Valley	31,449	10	478
E01019412	Belper East	Amber Valley	31,529	10	479
E01019640	Abbotsford	Erewash	31,572	10	480
E01019880	Willington and Findern	South Derbyshire	31,783	10	481
E01019788	Dronfield Woodhouse	NE Derbyshire	31,865	10	482
E01019830	Wingerworth	NE Derbyshire	31,944	10	483
E01019869	Repton	South Derbyshire	31,992	10	484
E01019756	Simmondley	High Peak	32,415	10	485
E01019848	Hilton	South Derbyshire	32,423	10	486

**Table 12 – Income Deprivation: Derbyshire LSOAs in the least deprived 10% nationally**

LSOA	Ward containing LSOA	District	England rank (1 =most deprived)	England decile	County rank
E01019637	Abbotsford	Erewash	29,249	10	450
E01019702	West Hallam & Dale Abbey	Erewash	29,261	10	451
E01019590	West	Chesterfield	29,280	10	452
E01019629	Norbury	Derbyshire Dales	29,294	10	453
E01019413	Belper East	Amber Valley	29,373	10	454
E01019694	Sandiacre South	Erewash	29,447	10	455
E01019785	Dronfield South	NE Derbyshire	29,557	10	456
E01019880	Willington & Findern	South Derbyshire	29,632	10	457
E01019860	Midway	South Derbyshire	29,715	10	458
E01019427	Duffield	Amber Valley	29,816	10	459
E01019686	Ockbrook & Borrowash	Erewash	29,899	10	460
E01019788	Dronfield Woodhouse	NE Derbyshire	30,050	10	461
E01019793	Gosforth Valley	NE Derbyshire	30,054	10	462
E01019835	Aston	South Derbyshire	30,082	10	463
E01019635	Wirksworth	Derbyshire Dales	30,188	10	464
E01019712	Blackbrook	High Peak	30,300	10	465
E01019518	South Normanton West	Bolsover	30,531	10	466
E01019614	Hathersage & Eyam	Derbyshire Dales	30,720	10	467
E01019640	Abbotsford	Erewash	30,738	10	468
E01019412	Belper East	Amber Valley	30,750	10	469
E01019830	Wingerworth	NE Derbyshire	30,798	10	470
E01019592	West	Chesterfield	30,831	10	471
E01019794	Gosforth Valley	NE Derbyshire	30,842	10	472
E01019783	Dronfield South	NE Derbyshire	30,949	10	473
E01019708	Wilsthorpe	Erewash	30,965	10	474
E01019839	Etwall	South Derbyshire	31,094	10	475
E01019588	Walton	Chesterfield	31,243	10	476
E01019831	Wingerworth	NE Derbyshire	31,286	10	477
E01019749	Old Glossop	High Peak	31,297	10	478
E01019587	Walton	Chesterfield	31,391	10	479
E01019736	Hope Valley	High Peak	31,446	10	480
E01019727	Dinting	High Peak	31,498	10	481
E01019473	Swanwick	Amber Valley	31,557	10	482
E01019731	Hadfield South	High Peak	31,678	10	483
E01019756	Simmondley	High Peak	32,050	10	484
E01019869	Repton	South Derbyshire	32,066	10	485
E01019848	Hilton	South Derbyshire	32,280	10	486

**Table 13 - Income Deprivation Affecting Children Index: Derbyshire LSOAs in the least deprived 10% nationally**

LSOA	Ward containing LSOA	District	England rank (1 = most deprived)	England decile	County rank
E01019610	Darley Dale	Derbyshire Dales	29,259	10	434
E01019784	Dronfield South	NE Derbyshire	29,277	10	435
E01019629	Norbury	Derbyshire Dales	29,295	10	436
E01019493	Clowne South	Bolsover	29,366	10	437
E01019778	Coal Aston	NE Derbyshire	29,503	10	438
E01019615	Hathersage & Eyam	Derbyshire Dales	29,532	10	439
E01019830	Wingerworth	NE Derbyshire	29,542	10	440
E01019593	West	Chesterfield	29,559	10	441
E01019769	Ashover	NE Derbyshire	29,592	10	442
E01019537	Brockwell	Chesterfield	29,627	10	443
E01019725	Cote Heath	High Peak	29,661	10	444
E01019518	South Normanton West	Bolsover	29,748	10	445
E01019656	Draycott	Erewash	29,761	10	446
E01019749	Old Glossop	High Peak	29,772	10	447
E01019427	Duffield	Amber Valley	29,827	10	448
E01019880	Willington & Findern	South Derbyshire	29,926	10	449
E01019476	Swanwick	Amber Valley	30,124	10	450
E01019804	Killamarsh West	NE Derbyshire	30,179	10	451
E01019788	Dronfield Woodhouse	NE Derbyshire	30,196	10	452
E01019783	Dronfield South	NE Derbyshire	30,228	10	453
E01019713	Blackbrook	High Peak	30,245	10	454
E01019834	Aston	South Derbyshire	30,301	10	455
E01019704	West Hallam & Dale Abbey	Erewash	30,396	10	456
E01019755	Sett	High Peak	30,468	10	457
E01019839	Etwall	South Derbyshire	30,470	10	458
E01019588	Walton	Chesterfield	30,522	10	459
E01019587	Walton	Chesterfield	30,643	10	460
E01019590	West	Chesterfield	30,671	10	461
E01019785	Dronfield South	NE Derbyshire	30,813	10	462
E01019727	Dinting	High Peak	30,814	10	463
E01019686	Ockbrook & Borrowash	Erewash	30,835	10	464
E01019867	Repton	South Derbyshire	30,867	10	465
E01019869	Repton	South Derbyshire	30,886	10	466
E01019559	Linacre	Chesterfield	30,905	10	467
E01019860	Midway	South Derbyshire	30,959	10	468
E01019621	Matlock All Saints	Derbyshire Dales	31,134	10	469
E01019779	Coal Aston	NE Derbyshire	31,303	10	470
E01019702	West Hallam & Dale Abbey	Erewash	31,329	10	471
E01019406	Alport	Amber Valley	31,335	10	472
E01019635	Wirksworth	Derbyshire Dales	31,406	10	473
E01019473	Swanwick	Amber Valley	31,409	10	474
E01019614	Hathersage & Eyam	Derbyshire Dales	31,567	10	475
E01019848	Hilton	South Derbyshire	31,769	10	476
E01019828	Wingerworth	NE Derbyshire	31,776	10	477
E01019708	Wilsthorpe	Erewash	31,871	10	478
E01019694	Sandiacre South	Erewash	31,888	10	479
E01019592	West	Chesterfield	31,912	10	480
E01019736	Hope Valley	High Peak	31,926	10	481
E01019641	Breaston	Erewash	31,949	10	482
E01019756	Simmondley	High Peak	32,086	10	483
E01019793	Gosforth Valley	NE Derbyshire	32,089	10	484
E01019731	Hadfield South	High Peak	32,133	10	485
E01019831	Wingerworth	NE Derbyshire	32,143	10	486

**Table 14 - Income Deprivation Affecting Older People Index: Derbyshire LSOAs in the least deprived 10% nationally**

LSOA	Ward containing LSOA	District	England rank (1 =most deprived)	England decile	County rank
E01019697	Sawley	Erewash	29,248	10	448
E01019610	Darley Dale	Derbyshire Dales	29,252	10	449
E01019414	Belper North	Amber Valley	29,336	10	450
E01019597	Ashbourne South	Derbyshire Dales	29,342	10	451
E01019635	Wirksworth	Derbyshire Dales	29,390	10	452
E01019656	Draycott	Erewash	29,406	10	453
E01019839	Etwall	South Derbyshire	29,446	10	454
E01019788	Dronfield Woodhouse	NE Derbyshire	29,490	10	455
E01019590	West	Chesterfield	29,544	10	456
E01019602	Bradwell	Derbyshire Dales	29,568	10	457
E01019595	Ashbourne North	Derbyshire Dales	29,675	10	458
E01019828	Wingerworth	NE Derbyshire	29,724	10	459
E01019714	Burbage	High Peak	29,740	10	460
E01019473	Swanwick	Amber Valley	29,742	10	461
E01019783	Dronfield South	NE Derbyshire	29,775	10	462
E01019731	Hadfield South	High Peak	29,776	10	463
E01019405	Alport	Amber Valley	29,830	10	464
E01019749	Old Glossop	High Peak	29,870	10	465
E01019756	Simmondley	High Peak	29,893	10	466
E01019427	Duffield	Amber Valley	29,954	10	467
E01019779	Coal Aston	NE Derbyshire	29,964	10	468
E01019716	Buxton Central	High Peak	29,984	10	469
E01019841	Etwall	South Derbyshire	30,028	10	470
E01019592	West	Chesterfield	30,266	10	471
E01019736	Hope Valley	High Peak	30,317	10	472
E01019425	Duffield	Amber Valley	30,319	10	473
E01019831	Wingerworth	NE Derbyshire	30,449	10	474
E01019866	North West	South Derbyshire	30,649	10	475
E01019589	Walton	Chesterfield	30,882	10	476
E01019712	Blackbrook	High Peak	30,923	10	477
E01019413	Belper East	Amber Valley	30,979	10	478
E01019869	Repton	South Derbyshire	31,219	10	479
E01019587	Walton	Chesterfield	31,226	10	480
E01019588	Walton	Chesterfield	31,376	10	481
E01019727	Dinting	High Peak	31,421	10	482
E01019794	Gosforth Valley	NE Derbyshire	31,495	10	483
E01019762	Temple	High Peak	31,520	10	484
E01019614	Hathersage & Eyam	Derbyshire Dales	31,579	10	485
E01019599	Bakewell	Derbyshire Dales	31,665	10	486

**Table 15 – Employment Deprivation: Derbyshire LSOAs in the least deprived 10% nationally**

<b>LSOA</b>	<b>Ward containing LSOA</b>	<b>District</b>	<b>England rank</b> (1 = most deprived)	<b>England decile</b>	<b>County rank</b>
E01019597	Ashbourne South	Derbyshire Dales	29,263	10	470
E01019640	Abbotsford	Erewash	29,483	10	471
E01019603	Brailsford	Derbyshire Dales	29,487	10	472
E01019783	Dronfield South	NE Derbyshire	29,531	10	473
E01019839	Etwall	South Derbyshire	29,713	10	474
E01019618	Litton & Longstone	Derbyshire Dales	29,774	10	475
E01019831	Wingerworth	NE Derbyshire	29,822	10	476
E01019629	Norbury	Derbyshire Dales	29,876	10	477
E01019849	Hilton	South Derbyshire	30,023	10	478
E01019413	Belper East	Amber Valley	30,180	10	479
E01019830	Wingerworth	NE Derbyshire	30,451	10	480
E01019712	Blackbrook	High Peak	30,477	10	481
E01019606	Chatsworth	Derbyshire Dales	30,513	10	482
E01019736	Hope Valley	High Peak	30,659	10	483
E01019412	Belper East	Amber Valley	30,697	10	484
E01019869	Repton	South Derbyshire	31,304	10	485
E01019848	Hilton	South Derbyshire	31,901	10	486

**Table 16 – Health Deprivation and Disability: Derbyshire LSOAs in the least deprived 10% nationally**

<b>LSOA</b>	<b>Ward containing LSOA</b>	<b>District</b>	<b>England rank</b> (1 = most deprived)	<b>England decile</b>	<b>County rank</b>
E01019848	Hilton	South Derbyshire	29,416	10	474
E01019833	Aston	South Derbyshire	29,518	10	475
E01019853	Melbourne	South Derbyshire	29,522	10	476
E01019606	Chatsworth	Derbyshire Dales	29,624	10	477
E01019607	Clifton & Bradley	Derbyshire Dales	29,901	10	478
E01019413	Belper East	Amber Valley	30,253	10	479
E01019614	Hathersage & Eyam	Derbyshire Dales	30,268	10	480
E01019869	Repton	South Derbyshire	30,622	10	481
E01019678	Long Eaton Central	Erewash	30,706	10	482
E01019839	Etwall	South Derbyshire	30,882	10	483
E01019472	South West Parishes	Amber Valley	31,091	10	484
E01019880	Willington & Findern	South Derbyshire	31,109	10	485
E01019849	Hilton	South Derbyshire	31,743	10	486



**Table 17 - Education, Skills and Training Deprivation: Derbyshire LSOAs in the least deprived 10% nationally**

<b>LSOA</b>	<b>Ward containing LSOA</b>	<b>District</b>	<b>England rank</b> (1 = most deprived)	<b>England decile</b>	<b>County rank</b>
E01019834	Aston	South Derbyshire	29,497	10	466
E01019472	South West Parishes	Amber Valley	29,626	10	467
E01019593	West	Chesterfield	29,663	10	468
E01019749	Old Glossop	High Peak	29,750	10	469
E01019841	Etwall	South Derbyshire	29,751	10	470
E01019618	Litton & Longstone	Derbyshire Dales	29,835	10	471
E01019604	Calver	Derbyshire Dales	29,892	10	472
E01019606	Chatsworth	Derbyshire Dales	29,997	10	473
E01019848	Hilton	South Derbyshire	30,028	10	474
E01019756	Simmondley	High Peak	30,165	10	475
E01019772	Brampton & Walton	NE Derbyshire	30,177	10	476
E01019794	Gosforth Valley	NE Derbyshire	30,319	10	477
E01019587	Walton	Chesterfield	30,336	10	478
E01019588	Walton	Chesterfield	30,485	10	479
E01019839	Etwall	South Derbyshire	30,961	10	480
E01019425	Duffield	Amber Valley	31,062	10	481
E01019592	West	Chesterfield	31,161	10	482
E01019426	Duffield	Amber Valley	31,410	10	483
E01019869	Repton	South Derbyshire	31,615	10	484
E01019614	Hathersage & Eyam	Derbyshire Dales	31,790	10	485
E01019427	Duffield	Amber Valley	32,129	10	486

**Table 18 - Barriers to Housing and Services: Derbyshire LSOAs in the least deprived 10% nationally –**

LSOA	Ward containing LSOA	District	England rank (1 = most deprived)	England decile	County rank
E01019692	Sandiacre North	Erewash	29,267	10	379
E01019676	Long Eaton Central	Erewash	29,315	10	380
E01019570	Moor	Chesterfield	29,368	10	381
E01019438	Heanor West	Amber Valley	29,388	10	382
E01019765	Whaley Bridge	High Peak	29,449	10	383
E01019458	Ripley	Amber Valley	29,458	10	384
E01019880	Willington & Findern	South Derbyshire	29,525	10	385
E01019701	Stanley	Erewash	29,559	10	386
E01019706	Wilsthorpe	Erewash	29,642	10	387
E01019878	Swadlincote	South Derbyshire	29,666	10	388
E01019425	Duffield	Amber Valley	29,749	10	389
E01019535	Brimington South	Chesterfield	29,817	10	390
E01019680	Nottingham Rd	Erewash	29,842	10	391
E01019853	Melbourne	South Derbyshire	29,855	10	392
E01019806	Killamarsh West	NE Derbyshire	29,873	10	393
E01019509	Shirebrook North West	Bolsover	29,909	10	394
E01019658	Hallam Fields	Erewash	29,937	10	395
E01019660	Ilkeston Central	Erewash	30,046	10	396
E01019508	Shirebrook Langwith	Bolsover	30,097	10	397
E01019453	Langley Mill & Aldercar	Amber Valley	30,152	10	398
E01019696	Sandiacre South	Erewash	30,213	10	399
E01019776	Clay Cross South	NE Derbyshire	30,289	10	400
E01019682	Nottingham Rd	Erewash	30,350	10	401
E01019404	Alfreton	Amber Valley	30,359	10	402
E01019639	Abbotsford	Erewash	30,362	10	403
E01019407	Belper Central	Amber Valley	30,502	10	404
E01019760	Stone Bench	High Peak	30,530	10	405
E01019775	Clay Cross North	NE Derbyshire	30,573	10	406
E01019456	Ripley	Amber Valley	30,585	10	407
E01019439	Heanor West	Amber Valley	30,593	10	408
E01019689	Old Park	Erewash	30,685	10	409
E01019443	Ironville & Riddings	Amber Valley	30,738	10	410
E01019420	Codnor & Waingroves	Amber Valley	30,865	10	411
E01019433	Heanor & Loscoe	Amber Valley	30,873	10	412
E01019703	West Hallam & Dale Abbey	Erewash	30,883	10	413
E01019716	Buxton Central	High Peak	30,888	10	414
E01019773	Clay Cross North	NE Derbyshire	30,889	10	415
E01019644	Cotmanhay	Erewash	30,913	10	416
E01019780	Dronfield North	NE Derbyshire	30,927	10	417
E01019545	Hasland	Chesterfield	30,959	10	418
E01019469	Somercotes	Amber Valley	30,975	10	419
E01019548	Hasland	Chesterfield	30,988	10	420
E01019650	Derby Rd West	Erewash	31,010	10	421
E01019494	Clowne South	Bolsover	31,196	10	422
E01019655	Draycott	Erewash	31,253	10	423
E01019463	Ripley & Marehay	Amber Valley	31,261	10	424
E01019638	Abbotsford	Erewash	31,263	10	425
E01019856	Midway	South Derbyshire	31,267	10	426
E01019861	Newhall & Stanton	South Derbyshire	31,272	10	427
E01019516	South Normanton West	Bolsover	31,284	10	428
E01019673	Little Hallam	Erewash	31,303	10	429
E01019441	Heanor West	Amber Valley	31,320	10	430
E01019809	North Wingfield Central	NE Derbyshire	31,362	10	431
E01019546	Hasland	Chesterfield	31,390	10	432
E01019592	West	Chesterfield	31,424	10	433

E01019461	Ripley & Marehay	Amber Valley	31,427	10	434
E01019498	Elmton-with-Creswell	Bolsover	31,458	10	435
E01019492	Clowne North	Bolsover	31,470	10	436
E01019786	Dronfield South	NE Derbyshire	31,483	10	437
E01019700	Sawley	Erewash	31,488	10	438
E01019810	North Wingfield Central	NE Derbyshire	31,499	10	439
E01019401	Alfreton	Amber Valley	31,508	10	440
E01019792	Eckington South	NE Derbyshire	31,535	10	441
E01019791	Eckington South	NE Derbyshire	31,571	10	442
E01019643	Breaston	Erewash	31,578	10	443
E01019647	Derby Rd East	Erewash	31,589	10	444
E01019854	Melbourne	South Derbyshire	31,639	10	445
E01019846	Hatton	South Derbyshire	31,659	10	446
E01019883	Woodville	South Derbyshire	31,695	10	447
E01019690	Old Park	Erewash	31,700	10	448
E01019756	Simmondley	High Peak	31,713	10	449
E01019659	Hallam Fields	Erewash	31,737	10	450
E01019471	Somercotes	Amber Valley	31,746	10	451
E01019522	Tibshelf	Bolsover	31,754	10	452
E01019591	West	Chesterfield	31,769	10	453
E01019803	Killamarsh East	NE Derbyshire	31,830	10	454
E01019781	Dronfield North	NE Derbyshire	31,834	10	455
E01019757	Simmondley	High Peak	31,887	10	456
E01019789	Eckington North	NE Derbyshire	31,893	10	457
E01019807	Killamarsh West	NE Derbyshire	31,936	10	458
E01019440	Heanor West	Amber Valley	31,942	10	459
E01019510	Shirebrook North West	Bolsover	31,977	10	460
E01019688	Old Park	Erewash	31,978	10	461
E01019470	Somercotes	Amber Valley	31,998	10	462
E01019436	Heanor East	Amber Valley	32,010	10	463
E01019486	Bolsover South	Bolsover	32,053	10	464
E01019507	Shirebrook East	Bolsover	32,072	10	465
E01019645	Cotmanhay	Erewash	32,085	10	466
E01019481	Blackwell	Bolsover	32,097	10	467
E01019802	Killamarsh East	NE Derbyshire	32,138	10	468
E01019662	Ilkeston Central	Erewash	32,170	10	469
E01019685	Ockbrook & Borrowash	Erewash	32,181	10	470
E01019482	Blackwell	Bolsover	32,200	10	471
E01019648	Derby Rd East	Erewash	32,202	10	472
E01019424	Crich	Amber Valley	32,211	10	473
E01019651	Derby Rd West	Erewash	32,229	10	474
E01019500	Pinxton	Bolsover	32,236	10	475
E01019501	Pinxton	Bolsover	32,328	10	476
E01019672	Little Hallam	Erewash	32,347	10	477
E01019787	Dronfield Woodhouse	NE Derbyshire	32,370	10	478
E01019499	Pinxton	Bolsover	32,388	10	479
E01019674	Little Hallam	Erewash	32,399	10	480
E01019693	Sandiacre North	Erewash	32,423	10	481
E01019497	Elmton-with-Creswell	Bolsover	32,424	10	482
E01019782	Dronfield North	NE Derbyshire	32,453	10	483
E01019649	Derby Rd East	Erewash	32,457	10	484
E01019657	Hallam Fields	Erewash	32,464	10	485
E01019652	Derby Rd West	Erewash	32,476	10	486

**Table 19 - Crime: Derbyshire LSOAs in the least deprived 10% nationally**

LSOA	Ward containing LSOA	District	England rank (1 = most deprived)	England decile	County rank
E01019880	Willington & Findern	South Derbyshire	29,267	10	448
E01019427	Duffield	Amber Valley	29,370	10	449
E01019848	Hilton	South Derbyshire	29,390	10	450
E01019589	Walton	Chesterfield	29,473	10	451
E01019795	Gosforth Valley	NE Derbyshire	29,561	10	452
E01019603	Brailsford	Derbyshire Dales	29,687	10	453
E01019640	Abbotsford	Erewash	29,698	10	454
E01019610	Darley Dale	Derbyshire Dales	29,824	10	455
E01019604	Calver	Derbyshire Dales	29,942	10	456
E01019423	Crich	Amber Valley	30,080	10	457
E01019749	Old Glossop	High Peak	30,116	10	458
E01019830	Wingerworth	NE Derbyshire	30,224	10	459
E01019424	Crich	Amber Valley	30,237	10	460
E01019784	Dronfield South	NE Derbyshire	30,252	10	461
E01019794	Gosforth Valley	NE Derbyshire	30,260	10	462
E01019742	Limestone Peak	High Peak	30,348	10	463
E01019609	Darley Dale	Derbyshire Dales	30,428	10	464
E01019756	Simmondley	High Peak	30,477	10	465
E01019627	Matlock St Giles	Derbyshire Dales	30,620	10	466
E01019831	Wingerworth	NE Derbyshire	30,628	10	467
E01019447	Kilburn	Amber Valley	30,642	10	468
E01019597	Ashbourne South	Derbyshire Dales	30,750	10	469
E01019814	Pilsley & Morton	NE Derbyshire	30,753	10	470
E01019406	Alport	Amber Valley	30,906	10	471
E01019618	Litton & Longstone	Derbyshire Dales	30,911	10	472
E01019637	Abbotsford	Erewash	30,978	10	473
E01019788	Dronfield Woodhouse	NE Derbyshire	31,056	10	474
E01019559	Linacre	Chesterfield	31,113	10	475
E01019785	Dronfield South	NE Derbyshire	31,275	10	476
E01019473	Swanwick	Amber Valley	31,372	10	477
E01019413	Belper East	Amber Valley	31,447	10	478
E01019629	Norbury	Derbyshire Dales	31,530	10	479
E01019425	Duffield	Amber Valley	31,588	10	480
E01019607	Clifton & Bradley	Derbyshire Dales	31,609	10	481
E01019879	Swadlincote	South Derbyshire	31,660	10	482
E01019839	Etwall	South Derbyshire	31,844	10	483
E01019622	Matlock All Saints	Derbyshire Dales	31,921	10	484
E01019828	Wingerworth	NE Derbyshire	31,988	10	485
E01019588	Walton	Chesterfield	32,148	10	486

**Table 20 - Living Environment Deprivation: Derbyshire LSOAs in the least deprived 10% nationally**

LSOA	Ward containing LSOA	District	England rank (1 = most deprived)	England decile	County rank
E01019849	Hilton	South Derbyshire	29,366	10	453
E01019778	Coal Aston	NE Derbyshire	29,457	10	454
E01019510	Shirebrook North West	Bolsover	29,462	10	455
E01019793	Gosforth Valley	NE Derbyshire	29,492	10	456
E01019568	Middlecroft & Poolsbrook	Chesterfield	29,510	10	457
E01019508	Shirebrook Langwith	Bolsover	29,576	10	458
E01019792	Eckington South	NE Derbyshire	29,694	10	459
E01019831	Wingerworth	NE Derbyshire	29,877	10	460
E01019721	Chapel West	High Peak	29,980	10	461
E01019592	West	Chesterfield	30,003	10	462
E01019637	Abbotsford	Erewash	30,026	10	463
E01019811	North Wingfield Central	NE Derbyshire	30,060	10	464
E01019474	Swanwick	Amber Valley	30,228	10	465
E01019509	Shirebrook North West	Bolsover District	30,447	10	466
E01019593	West	Chesterfield	30,495	10	467
E01019785	Dronfield South	NE Derbyshire	30,707	10	468
E01019788	Dronfield Woodhouse	NE Derbyshire	30,984	10	469
E01019518	South Normanton West	Bolsover	31,037	10	470
E01019777	Clay Cross South	NE Derbyshire	31,079	10	471
E01019828	Wingerworth	NE Derbyshire	31,086	10	472
E01019829	Wingerworth	NE Derbyshire	31,191	10	473
E01019473	Swanwick	Amber Valley	31,262	10	474
E01019848	Hilton	South Derbyshire	31,317	10	475
E01019413	Belper East	Amber Valley	31,390	10	476
E01019589	Walton	Chesterfield	31,412	10	477
E01019749	Old Glossop	High Peak	31,474	10	478
E01019563	Lowgates & Woodthorpe	Chesterfield	31,571	10	479
E01019486	Bolsover South	Bolsover	31,680	10	480
E01019551	Hollingwood & Inkersall	Chesterfield	31,784	10	481
E01019640	Abbotsford	Erewash	31,935	10	482
E01019558	Linacre	Chesterfield	32,191	10	483
E01019756	Simmondley	High Peak	32,223	10	484
E01019559	Linacre	Chesterfield	32,382	10	485
E01019588	Walton	Chesterfield	32,425	10	486

## Appendix D

**Table 21 - Number of LSOAS in the 20% most deprived and 10% least deprived – Education, Skills and Training Deprivation Sub-domains by local authority districts**

Area	Education, Skills and Training domain		Children and Young People sub-domain		Skills sub-domain	
	Number of LSOAs in 20% most deprived nationally	Number of LSOAs in 10% least deprived nationally	Number of LSOAs in 20% most deprived nationally	Number of LSOAs in 10% least deprived nationally	Number of LSOAs in 20% most deprived nationally	Number of LSOAs in 10% least deprived nationally
Amber Valley	21	4	14	5	27	2
Bolsover	25	0	22	0	30	0
Chesterfield	17	4	13	6	29	0
Derbyshire Dales	3	4	1	12	4	1
Erewash	19	0	13	3	22	0
High Peak	7	2	5	4	6	0
North East Derbyshire	18	2	16	7	21	0
South Derbyshire	7	5	7	8	12	2
<b>Derbyshire</b>	<b>117</b>	<b>21</b>	<b>91</b>	<b>45</b>	<b>151</b>	<b>5</b>

**Table 22 - Number of LSOAS in the 20% most deprived and 10% least deprived – Barriers to Housing and Services Sub-domains by local authority districts**

Area	Barriers to Housing and Services domain		Geographical Barriers sub-domain		Wider Barriers sub-domain	
	Number of LSOAs in 20% most deprived nationally	Number of LSOAs in 10% least deprived nationally	Number of LSOAs in 20% most deprived nationally	Number of LSOAs in 10% least deprived nationally	Number of LSOAs in 20% most deprived nationally	Number of LSOAs in 10% least deprived nationally
Amber Valley	3	21	23	1	0	18
Bolsover	1	16	13	1	0	43
Chesterfield	2	7	8	4	0	1
Derbyshire Dales	16	0	23	0	7	0
Erewash	0	34	10	4	0	64
High Peak	6	5	15	3	2	0
North East Derbyshire	1	17	20	1	0	63
South Derbyshire	6	8	18	1	0	14
<b>Derbyshire</b>	<b>35</b>	<b>108</b>	<b>130</b>	<b>15</b>	<b>9</b>	<b>203</b>

**Table 23 - Number of LSOAs in the 20% most deprived and 10% least deprived – Living Environment Deprivation Sub-domains by Local Authority Districts**

Area	Living Environment domain		Indoors sub-domain		Outdoors sub-domain	
	Number of LSOAs in 20% most deprived nationally	Number of LSOAs in 10% least deprived nationally	Number of LSOAs in 20% most deprived nationally	Number of LSOAs in 10% least deprived nationally	Number of LSOAs in 20% most deprived nationally	Number of LSOAs in 10% least deprived nationally
Amber Valley	5	3	11	2	3	4
Bolsover	1	5	1	2	2	1
Chesterfield	3	9	4	8	3	6
Derbyshire Dales	2	0	11	0	0	16
Erewash	18	2	19	5	22	2
High Peak	5	3	11	2	0	12
North East Derbyshire	0	10	1	4	1	4
South Derbyshire	1	2	2	4	0	6
<b>Derbyshire</b>	<b>35</b>	<b>34</b>	<b>60</b>	<b>27</b>	<b>31</b>	<b>51</b>

## Appendix E

**Table 24 - Local Authority Summary Measures ID 2010 and 2007 - Derbyshire District Rankings**

<b>District</b>	<b>Indices of Deprivation</b>	<b>Rank of Average Score</b>	<b>Rank of Average Rank</b>	<b>Rank of Income (%)</b>	<b>Rank of Employment (%)</b>	<b>Rank of Local Concentration</b>	<b>Rank of Extent</b>
Amber Valley	<b>2010</b>	<b>158</b>	<b>159</b>	<b>154</b>	<b>128</b>	<b>160</b>	<b>161</b>
	2007	147	151	156	128	158	159
Bolsover	<b>2010</b>	<b>58</b>	<b>43</b>	<b>70</b>	<b>30</b>	<b>97</b>	<b>66</b>
	2007	50	37	73	24	79	53
Chesterfield	<b>2010</b>	<b>91</b>	<b>91</b>	<b>77</b>	<b>41</b>	<b>108</b>	<b>78</b>
	2007	72	74	74	34	82	64
Derbyshire Dales	<b>2010</b>	<b>241</b>	<b>232</b>	<b>275</b>	<b>249</b>	<b>278</b>	<b>228</b>
	2007	232	224	273	240	277	234
Erewash	<b>2010</b>	<b>148</b>	<b>150</b>	<b>145</b>	<b>120</b>	<b>133</b>	<b>127</b>
	2007	152	155	162	140	155	148
High Peak	<b>2010</b>	<b>189</b>	<b>191</b>	<b>204</b>	<b>161</b>	<b>169</b>	<b>176</b>
	2007	191	194	203	165	174	179
NE Derbyshire	<b>2010</b>	<b>169</b>	<b>176</b>	<b>156</b>	<b>112</b>	<b>161</b>	<b>169</b>
	2007	161	164	150	101	151	158
South Derbyshire	<b>2010</b>	<b>220</b>	<b>221</b>	<b>226</b>	<b>195</b>	<b>209</b>	<b>214</b>
	2007	214	213	224	184	200	206