



**SOUTH DERBYSHIRE  
PARTNERSHIP**

**Mike Roylance  
Head of Economic Development  
and Growth**

South Derbyshire District Council  
Civic Offices, Civic Way,  
Swadlincote, Derbyshire, DE11 0AH.

Please ask for Sally Cope  
Tel: (01283) 221000 Ext. 5791  
DDI: (01283) 595791  
Email: [sally.cope@southderbyshire.gov.uk](mailto:sally.cope@southderbyshire.gov.uk)  
[www.southderbyshire.gov.uk](http://www.southderbyshire.gov.uk)

22 June 2022

Dear Sir/Madam

**BOARD MEETING**

A Board Meeting of the South Derbyshire Partnership will be held virtually via Microsoft Teams on **Tuesday 28 June 2022 at 10:00 am.**

You are requested to attend.

Yours faithfully

Allison Thomas  
Strategic Director – Service Delivery

Enc



## **Voting Members of the Board:**

### **Local Authority Sector**

District Councillor Kevin Richards (South Derbyshire District Council) (Chairman)  
Cllr Stephanie Marbrow (Derbyshire Association of Local Councils)  
Councillor David Muller (Derbyshire County Council)  
Allison Thomas (South Derbyshire District Council)  
District Councillor Trevor Southerd (South Derbyshire District Council)  
District Councillor Lisa Brown (South Derbyshire District Council)

### **Other Public Sector**

Dave Beris (Derbyshire County Council – Children’s Services)  
Steve Hall (The Pingle Academy)  
Communities Chief Inspector Chris Thornhill (Derbyshire Constabulary)  
Vicky Smyth (Derbyshire County Council – Public Health)  
John Beaty (Burton & South Derbyshire College)  
Tina Brown (NHS Derby and Derbyshire Clinical Commissioning Group)

### **Private Sector**

Julie Langley (Toyota UK Ltd)  
Colleen Hempson (East Midlands Airport)  
Louise Driver | John Everitt (The National Forest Company)  
Kim Coe | Rob Coe (Swadlincote & District Chamber of Trade)  
Chris Beech (Sharpe’s Pottery Heritage and Arts Trust)  
Vacant

### **Voluntary/Community Sector**

Sally Eccles (Home Start Derby & South Derbyshire)  
Roger Moors (CEO South Derbyshire CVS)  
Dr Claire Teeling (Grow Outside C.I.C.)  
Matt Buckler (Derbyshire Wildlife Trust)  
Revd Dr Mike Firbank (Churches Together in Swadlincote)  
Vacant





## Agenda

**Time and Date** 10am, Tuesday 28 June 2022

**Venue** Virtual

Item	Description	
1	Introductions, apologies and to note any substitutes appointed for the Meeting.	10:00am
2	Declarations of Interest.	
3	To receive the Minutes of the Meeting held on 9 February 2022 (Attached).	
4	Matters Arising.	
5	Climate and Environment Action Plan (Matt Holford)	10.15am
6	Ukraine response (Matt Holford)	10.25am
7	Financial Inclusion Group (Samantha Elks)	10.30am
8	Theme Updates: <ul style="list-style-type: none"> <li>• Healthier Communities (Samantha Elks).</li> <li>• Children and Young People (Dave Beris).</li> <li>• Safer Communities (Chris Smith).</li> <li>• Stronger Communities (Roger Moors).</li> <li>• Sustainable Development (Mike Roylance).</li> </ul> Incorporating Sustainable Community Strategy Action Plan updates - Appendix 1 (Report attached).	10:40am
9	Budget Update	11:25am
10	Feedback and Future Agenda Items.	11:30am
	Date of Next Meeting: 19 October 2022 – 10:00am	Finish





## **BOARD MEETING - 9 FEBRUARY 2022**

### **SDP/51. PRESENT**

#### **Local Authority Sector**

District Councillor Kevin Richards (Chairman), District Councillor Trevor Southerd, Councillor David Muller, District Councillor Lisa Brown (South Derbyshire District Council), Councillor Stephanie Marbrow (DALC), Allison Thomas (South Derbyshire District Council).

#### **Other Public Sector**

Dave Beris (Derbyshire County Council – Children’s Services), Chris Thornhill (Communities Chief Inspector for South Division – Derbyshire Constabulary) Vicky Smyth (Derbyshire County Council – Public Health), Tina Brown (NHS Derby and Derbyshire Clinical Commissioning Group).

#### **Private Sector**

Julie Langley (Toyota Motor Manufacturing UK Ltd), Colleen Hempson (East Midlands Airport), Louise Driver (National Forest Company), Chris Beech (Sharpe’s Pottery & Heritage and Arts Trust).

#### **Voluntary/Community Sector**

Roger Moors (South Derbyshire CVS).

#### **Also in Attendance**

Councillor Amy Wheelton, Kevin Stackhouse, Mike Roylance, Chris Smith, Sally Cope (South Derbyshire District Council), Kay Simcox (Derbyshire Fire & Rescue Service), Inspector Michael Sisman (Derbyshire Constabulary), Ellen Langton (Derbyshire County Council), Kate Brown (NHS Derby and Derbyshire Clinical Commissioning Group).

### **SDP/52. APOLOGIES**

Apologies for absence from the Meeting were received from:

John Beaty (Burton and South Derbyshire College)  
Kim Coe (Swadlincote & District Chamber of Trade)  
Revd Mike Firbank (Churches Together in Swadlincote)  
Matt Butler (Derbyshire Wildlife Trust)

### **SDP/53. INTRODUCTIONS, APOLOGIES, SUBSTITUTES**

The Chair of the SDP, Councillor Kevin Richards, welcomed the partners to the South Derbyshire Partnership Board meeting. Introductions took place - Chief Inspector Chris Thornhill has taken over the role from Fiona Kilgour as Temporary Communities Chief Inspector for South Division and formerly had been the Inspector at Swadlincote. Inspector Michael Sisman from Swadlincote Police Station was also present. Welcomed observer at the meeting: Councillor Amy Wheelton.

Apologies noted.

Substitutes noted.

## **SDP/54. DECLARATION OF INTEREST**

No declarations of interest were noted.

## **SDP/55. MINUTES OF MEETING**

The Minutes of the Meeting held on 20 October 2021 were taken as read and approved as a true record.

## **SDP/56. MATTERS ARISING**

No matters arising.

## **SDP/57. SOUTH DERBYSHIRE DISTRICT COUNCIL – FINANCIAL AND BUDGET UPDATE**

Kevin Stackhouse, Strategic Director, provided an overview of the Council's financial position and outlined what the Council has been doing to support local businesses, residents and the local economy through the pandemic. The District Council has administered funding on behalf of the Government, including; hardship funds to help low-income residents; food parcels and support for the very vulnerable to purchase food; and helped with heating over the wintertime. To date some £30million in business grants have been distributed to local, medium and small businesses, including homeworkers, affected by the pandemic.

For more details on the Council's financial position: [www.southderbyshire.gov.uk](http://www.southderbyshire.gov.uk)

In summary, the Council's financial position remains sound, with a good level of reserves and services being managed within budget. There are clear pressures with additional funds needed to support the growth of the District, including extra refuse collection rounds and more parks to be maintained. The key source of income remains the New Homes Bonus from Central Government, which is part of the national funding system and assists growth areas like South Derbyshire.

The current concern is that the New Homes Bonus is being wound down and there is no replacement. The Council had anticipated and budgeted for the latest reduction in funding. The Government funding review due last year has been delayed, which is a concern for the Council. The Council's budget will be balanced for 2022-23 and 2023-24, but after 2023-24 the Council may face more difficult decisions.

The Council proposes to increase current grant levels to voluntary sector organisations and the allocation to Parish Councils for concurrent functions by 2% in the coming year.

Vicky Smyth wished to acknowledge and thank the District Council for its contributions towards the Covid effort - there has been a great partnership effort in South Derbyshire.

An overview was given of the difficulties faced in the administration of the Government's £150 Council Tax rebate to help with rising energy costs. Talks with Central Government are ongoing.

Allison Thomas wished to make partners aware that the District Council is also running a scheme to upgrade home energy efficiency and appealed to partners to help get the message out that funds are available and to apply through the Council.

The Council has also been successful in securing funding from the Government's Social Housing Decarbonisation Fund to help Council tenants improve the energy efficiency of their homes.

## SDP/58. HEART OF THE FOREST DRAFT MASTERPLAN VISION (Louise Driver)

Louise Driver, National Forest Company (Director of Operations) provided partners with an update on a project currently being taken forward with a number of different partners within the heart of the forest. (The National Forest is 200 square miles in the centre of England; the 'heart of the forest' is 10 square miles in the centre of that, stretching between the edge of Ashby in the east and Swadlincote in the west). The area has been the focus of restoration works from past open cast clay and coal mining activities. Nine million trees have been planted within the Forest, with an aim to get to 33% forest cover – it has now risen from 6% to 22% and is close to 33% in the Heart of the Forest.

There is a unique model of land ownership in the area, with sites held by charities, Forestry England, Local Authorities and the Woodland Trust. These partners working together will help to shape the landscape within this area, attract investment and develop the area as a tourism destination, to the benefit of communities and businesses.

The Masterplan Vision was last updated in 2009 and the progress made within the area was discussed. Restoration works are ongoing and some further land will be transferred in 2023 and the remainder later in 2030.

The next 25 years will see the increasing importance of climate change mitigation and adaption and creating places where people can live more sustainably and promote thriving communities.

Future aspirations have been developed in consultation with partners, local authorities, landowners and tourism operators, based upon the three pillars of sustainability (Environment, Economy and Society).

The three emerging themes of the Vision are: Place, Experience and Enterprise. An overview was provided of the six sites identified and how the landscape, woodlands, lakes and heritage could be developed. These sites are: Conkers, Forest Enterprise, Forest Hub, The Lakes, Moira Furnace and Hicks Lodge.

A number of cycling and walking routes and cycle hubs are to be improved so that people can move through the different zones by foot/cycle, off road, introducing natural play and culture and arts within these cycle routes.

The next step is a wider community consultation on the Masterplan, aiming to launch the final document by the end of Summer. The intention is to establish a steering group which will prioritise and further detail the work programme going forward.

The Chair pointed out the good work being done at Rosliston Forestry Centre, with the Rangers, Jubilee garden and the education of young people. Louise responded that the proposals will integrate with the wider National Forest landscape and Rosliston should benefit as well.

An update was requested on the National Forest and the Ivanhoe Line. The National Forest actively promotes the Ivanhoe Line at every opportunity and supported the recent preparation of an outline business case. Feedback on the business case was currently awaited.

## **SDP/59. SOUTH DERBYSHIRE CVS STRATEGY (Roger Moors)**

Roger Moors firstly wished to underline the value and strength of the South Derbyshire Partnership and, as a result of that partnership, the CVS along with others within the voluntary and community sector have saved lives throughout the pandemic and this needed to be noted.

He also wished to note the sector's appreciation of the 2% increase in funding.

The CVS property in Grove Street has been sold, and the organisation is actively looking for a front of house facility in Swadlincote High Street to provide a range of services. It is also exploring the development of the food bank hub into a secondary site with more facilities and space to bring some partners inhouse to provide a range of support in one place.

This year the CVS board of trustees have agreed to invest some of their reserves into increasing the work done by CVS. A new website will be launched in April. Volunteering and training support will be expanded, plus training for other groups.

The Chair gave thanks to the CVS and their volunteers and partner organisations for the support and services provided to the residents of South Derbyshire, particularly during the pandemic.

## **SDP/60. INTEGRATED CARE SYSTEMS (Kate Brown)**

A presentation was given by Kate Brown (Director of Joint Commissioning and Community Development) for Derby & Derbyshire NHS CCG.

The approach and structure of the new Integrated Care System, encompassing NHS health and social care, was outlined. The CCGs will cease in July 2022, with their functions and staff transferred to the Integrated Care Board, a new statutory organisation. Through place-based working the aim is to take decisions closer to communities. The focus is on integration within the NHS and with wider partners to improve care, health and wellbeing, enhance accessibility and address inequalities and support delivery. The aim is to smooth out the barriers that get in the way of people working together and deliver joined up services at a local level.

A key component is Provider Collaborative – to plan together and think together with partners and to use all the assets in the best way to get the best care for people.

Derbyshire's Local Place Alliances, partnership working and Primary Care Networks (GP practices working together) provide a great platform to build on, draw together and support more. An overview of the new Governance Structure was provided, noting the role of the voluntary/community sector and social enterprises as essential system partners that can help in the support and delivery of care.

The Shadow Board will be established during April, with the Integrated Care Board formally starting in July and the formal part of the Integrated Care Partnership commencing in September. In the meantime, ongoing work and service planning will continue.

A discussion took place on Section 106 funding and delivery, and how to target developer contributions. Allison Thomas had attended a recent Overview and Scrutiny Committee with Clive Newton who had explained the process CCGs go through to plan and commission health care, which will be important as the new Local Plan is developed.

Allison Thomas mentioned the challenges of having two Place Alliances operating in South Derbyshire: (1) The City (2) The rest of South Derbyshire; It will be interesting to see how the agenda emerges and how Districts can be represented at Board level.

Vicky Smyth responded on Section 106 planning contributions. Prior to the pandemic Public Health established a Planning and Health Systems Group with key Planners and Health colleagues from across the County to explore these issues - this now needs to be revisited.

### **SDP/61. COVID UPDATE (Vicky Smyth)**

Vicky Smyth provided an overview of progress with the different Covid-19 variants, Alpha, Delta and Omicron, since the start of the pandemic. The latest Surveillance Report for South Derbyshire was discussed, with South Derbyshire currently having the highest rate in the County. It was pointed out that there may be a number of reasons for this, it may even be due to South Derbyshire residents being better at reporting their lateral flow tests. The key message was that Covid-19 levels and community transmission are still high so continue to take precautions where we can. A brief was provided on the recent changes in the guidance and an update on the pressures on NHS acute and primary care.

An overview was provided on the vaccination plan for the District and the roving model whereby NHS partners are taking vaccination clinics out into areas of low vaccination uptake and doing targeted work.

Roger Moors plans to use the Covid Connectors communication channel to be more proactive and creative, and to help send out messages of resources and opportunities.

### **SDP/62. THEME UPDATE**

Theme Group Leads provided an overview of their update reports.

#### **Healthier Communities**

A request to partners to promote locally to community and voluntary organisations working in Derbyshire the availability of the Community Response Fund offering grants of up to £2,000.

To note on the presentation slide: A list of the support available for the current key issue - the cost of living. For more information contact Vicky Smyth: [vicky.smyth@derbyshire.gov.uk](mailto:vicky.smyth@derbyshire.gov.uk)

ACTION: SC - circulate presentation slides.

#### **Safer Communities**

Inspector Sisman introduced his new role as Inspector at Swadlincote, currently focusing on Safer Neighbourhood staffing and the recruitment of more Police Community Support Officers (PCSOs). Working with cross border partners, he has also noted a gap in youth provision with more preventative work needing to be done.

#### **Stronger Communities**

Roger Moors highlighted the success of the Over '50s Survey which will help inform and shape plans for the future. 391 survey responses were received. A report is currently with the Senior Leadership Team at the District Council.

### **SDP/63. BUDGET UPDATE**

The Board agreed to:

- (a) support a funding award of £2,000 for the South Derbyshire Environmental Forum and Rosliston Rangers.



**SDP/64. FEEDBACK, FUTURE AGENDA ITEMS AND DATE OF NEXT MEETING**

No items were raised as future Agenda Items.

Please email: [economic.development@southderbyshire.gov.uk](mailto:economic.development@southderbyshire.gov.uk) with any future items.

The date of the next meeting will be 28<sup>th</sup> June 2022.

The Chair thanked everyone for participating and closed the meeting at 11:50 am.



**Agenda Report to the Board**

**Item 8. THEME GROUP UPDATES: QUARTERS 4 (JANUARY – MARCH 2022)**

**1.0 Purpose of Report**

1.1 To inform the Board on the Theme Groups work to date.

**2.0 Detail**

2.1 Performance reports for each of the Theme Groups are attached as Appendix A. These provide a summary of progress against priorities in the Sustainable Community Strategy, note issues that the Partnership could add value to, and highlight any action required of partners such as attendance at or promotion of an event.

Contact: Mike Roylance, South Derbyshire District Council  
Tel. (01283) 595725  
Email. [mike.roylance@southderbyshire.gov.uk](mailto:mike.roylance@southderbyshire.gov.uk)

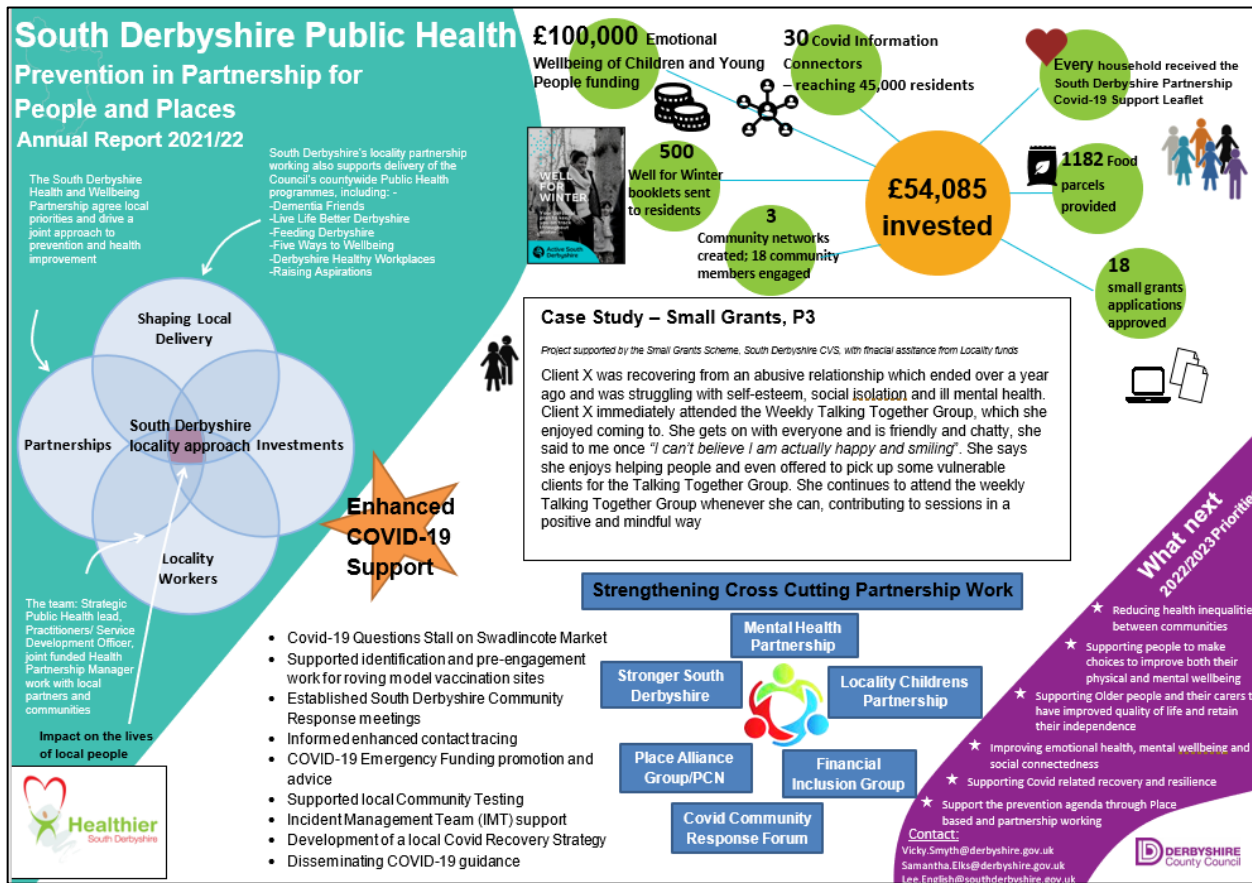
# APPENDIX A - QUARTERS 4 (JANUARY – MARCH 2022)

## THEME GROUP: HEALTHIER COMMUNITIES

Highlight summary of progress against priorities in the Sustainable Communities Strategy.

### Health and Wellbeing Group Annual Report 2022

Attached below is the South Derbyshire locality annual report which highlights key successes of the Health and Wellbeing Group over the last year. Key achievements include the Well for Winter Campaign, development of 3 community networks in Hilton, Etwall and Hatton through the Connect South Derbyshire project and the continued support of the Covid-19 vaccination programme.



For further information please contact [Vicky Smyth](mailto:Vicky.Smyth@derbyshire.gov.uk)

## **Emotional Wellbeing of Children and Young People**

In 2021 the partnership received £100,000 of additional Public Health investment to help improve the emotional wellbeing of children and young people. So far two projects have been approved for funding: Outreach Youth Work (Safe and Sound) and Forest School Sessions (Environmental Education Project).

Safe and Sound have received funding to deliver weekly outreach youth work for one year. During an evening, Safe & Sound engagement workers visit various locations around Swadlincote including parks, where they engage with young people, build trusted relationships and promote positive protective factors, such as child risk of exploitation, emotional health, and sexual health.

Six Forest School sessions have been funded as a pilot project to take place at Swadlincote Woodlands in an evening. These sessions are targeted towards young people aged 10 years plus who are transitioning from Primary to Secondary School or who may be struggling to thrive in a traditional school setting. Sessions include a variety of activities that participants can take part in each week including nature identification, play, exploration in the wood environment, crafts but will also include a weekly focused activity and games.

Prospective conversations have taken place with a variety of organisations regarding various other projects. More details will be shared as interventions are approved.

A guidance document has been developed with criteria for this funding (see attached)

For further information please contact [Samantha Elks](#)



Emotional Wellbeing  
CAYP Funding Guidance

## **Community Gardening Project**

Through the South Derbyshire Mental Health Partnership, it was highlighted that Derbyshire Recovery Partnership (alcohol and substance misuse) were interested in setting up a recovery through nature project and therefore need access to a piece of land.

As part of a multi-agency approach, a collection of partners including SDDC Housing, Grow Outside CIC, Occupational Therapists, P3, Public Health and SDDC are working together to progress this area of work. Lee English (Health Partnership Manager) together with Paul Whittingham (Housing) have identified areas of land which may be appropriate for use. It is the intention that multiple agencies could use the land through the course of the week, benefitting a variety of different service users.

For further information please contact [Lee English](#)

## THEME GROUP: CHILDREN & YOUNG PEOPLE

Children Services staff have returned to the offices on a rota system and line with new ways of working which will be fully implemented in September, part office/part home working. Home visits and contact with children is face to face which is important for an essential for a safeguarding service during the period of lock down.

South Derbyshire and Dales Children Services Key Data 21 June

No. of children who/on:

Children in Care	96
Child Protection Plan	99
Children in Need	459
Early Help Services	155

Group work Activities:

- Parenting Support Groups
- Children Centre Groups
- Youth Groups – delivery in local schools

Children Services currently have 4 buildings open with Covid Health and Safety measures in place:

- Rink House - Staff
- Elms – Staff and Families
- Woodville Children Centre – Staff
- Etwall – Staff and Families

There is currently a drive for all staff to assist with the financial inclusion agenda and particularly so with the cost of living increasing and impacting all families. There are a range of youth grants and funding being made available for families. There is strong partnership within schools and across all agencies in supporting the needs of children and families.

The Locality and Children Partnership (which pulls all agencies together) new aims are:

Supporting young people improve oral health

Providing Safe areas of young people – response to knife crime and surveys

Inclusion of Young People within decision making.

This partnership meets every two months and there is a good representation amongst all agencies.

Staff retentions remains an issue amongst Social Work teams and there are various measures planned to increase retention within this sector.

## THEME GROUP: SAFER COMMUNITIES

Highlight summary of progress against priorities in the Sustainable Communities Strategy.

### **Young people are more aware and informed about risks to their safety from child sexual exploitation, sexting and drugs:**

**Safe and Sound** have continued to carry out their youth outreach work in the urban parks over the winter months. Funded through the CSP they have visited the area on a fortnightly basis. The information gathered on visits is recorded and reported back to agencies such as the Police, SDDC Cultural Services and Active Health and Wellbeing teams CSP, and DCC Childrens Services. Safe and Sound are a charity that educate young people on the dangers of exploitation, for more information visit their website [www.safeandsoundgroup.org.uk](http://www.safeandsoundgroup.org.uk)

Weekly visits will continue for the next 12 months thanks to Public Health Funding which has been agreed by the Health and Wellbeing Board.

### **Street Whyze Project**

The Communities Team have been working closely with the South Derbyshire Support Centre (Previously known as Newhall Pupil Referral Unit (PRU)) to commission knife crime input into the centre. There are a number of known and at-risk young people currently attending the centre who could benefit from this kind of input. A local organisation known as the Street Whyze project who have previously worked in Birmingham have been approached to provide the input. The delivery will include 12 weekly group sessions and six identified individuals will receive six weekly one-to-one sessions.

### **Operation Sceptre**

Operation Sceptre, a national knife crime awareness week dedicated to tackling and preventing knife crime took place between Monday 16 and Sunday 22 May. During the week of action there was a series of press releases, knife sweeps in local parks, social media posts, a knife amnesty bin located in Swadlincote and chalk paint stencilling in our urban core parks and open spaces.



**More people feel safe and secure in their home and in the community particularly those who are most vulnerable:**

**Pub Watch Meetings**

Numbers of licensees attending the meetings has increased significantly since the meetings returned to face to face in January. Two individuals were banned in and a new Chair was appointed. The scheme is in the process of signing up to a new online Pub Watch Scheme (Scheme Link) and members of the Communities Team and one of the licensees attended the National Pub Watch Conference in February. The Licensed Trade Charity (LTC) who presented at the conference were invited to attend the May Pub Watch Meeting to give a presentation on what services they offer. The Police also provided an update on Fake ID's

**School Parking Banners**

x30 new road safety banners, funded by the CSP are being distributed to Schools across the District by local SNT Officers. Two different designs were purchased, one which states 'DO NOT STOP ON THE ZIG ZAGS and another which states 'THINK BEFORE YOU PARK'.



**Electric Bikes**

In response to a request made by PC Robert McGlade, two new Electric Bikes have been funded by the South Derbyshire Community Safety Partnership for use by the South Derbyshire Police Safer Neighbourhood Team. It is planned that the bikes will be used in and around the Urban Core as well as in more northern areas of the District.



## **Anti-social Behaviour Prevention Grant**

Derbyshire Police and Crime Commissioner, Angelique Foster has launched a second round of funding from her **Anti-Social Behaviour Prevention Grant** worth £100,000 for projects that take positive action against anti-social behaviour. These could include sports and creative arts diversionary programmes, radio/film-making activities, drop-ins for young people, CCTV, community clean-ups, intergenerational schemes, mentoring projects, education initiatives and parental support programmes.

Grants of up to £5000 will be allocated to successful applicants who can show evidence of how they will make a difference to Derby and Derbyshire's communities.

**PASTE INTO CHATBAR** - <https://www.derbyshire-pcc.gov.uk/finance-grants/anti-social-behaviour-prevention-grant-round-2/>

## **Scams Awareness Month**

June is Scams Awareness Month; social media posts have been created to promote this via the Councils website and social media channels as well as on the Safer South Derbyshire Facebook page.



Any action required of Partners i.e. attendance or promotion of an event.

## Public Area Forums

The SDDC Summer Area Forums will recommence as face-to-face meetings for the first time since Covid started. Partner agencies are welcome to attend and provide any updates should they wish to. The meetings take place on the following dates:

### AREA FORUM DATES

June/ July 2022

All meetings start at 6:30pm

<b>Etwall Area Forum (Area One)</b> Covering: - Ash, Barton Blount, Bearwardcote, Burnaston, Church Broughton, Dalbury Lees, Egginton, Etwall, Foston & Scropton, Hatton, Hilton, Hoon, Marston-on-Dove, Osleston & Thurvaston, Radbourne, Sutton on the Hill and Trusley	Thursday 7 <sup>th</sup> July, 2022	<b>Frank Wickham Hall</b>
<b>Repton Area Forum (Area Two)</b> Covering: - Bretby, Calke, Findern, Foremark, Ingleby, Newton Solney, Repton, Milton, Smisby, Stenson Fields, Ticknall, Twyford & Stenson and Willington	Tuesday 19 <sup>th</sup> July, 2022	<b>Ticknall Village Hall</b>
<b>Melbourne Area Forum (Area Three)</b> Covering: - Melbourne, Barrow upon Trent, Stanton by Bridge, Swarkestone, Weston-on-Trent, Aston-on-Trent, Shardlow, Thulston, Ambaston and Elvaston	Thursday 14 <sup>th</sup> July, 2022	<b>Melbourne Sporting Partnership</b>
<b>Swadlincote Area Forum (Area Four)</b> Covering: - Church Gresley, Swadlincote, Woodville, Hartshorne and Goseley	Thursday 30 <sup>th</sup> June, 2022	<b>Oakland Village</b>
<b>Newhall Area Forum (Area Five)</b> Covering: - Midway, Newhall and Stanton	Tuesday 5 <sup>th</sup> July, 2022	<b>Midway Community Centre</b>
<b>Linton Area Forum (Area Six)</b> Covering: - Castle Gresley, Catton, Caudwell, Coton in the Elms, Drakelow, Linton, Lullington, Netherseal, Overseal, Rosliston and Walton-on-Trent	Tuesday 12 <sup>th</sup> July, 2022	<b>Coton-in-the-Elms Community Centre</b>

## THEME GROUP: STRONGER COMMUNITIES

### Highlight summary of progress against priorities in the Sustainable Communities Strategy.

Over the course of the pandemic and for a range of reasons, the South Derbyshire Stronger Communities Group hasn't functioned well. An attempt was made in 2021 to relaunch the group with a focus on one locality need (Newhall) but that failed to take off.

The reasons for this include:

- Paucity of strategic representation
- The focus of the sector on actual delivery within the community during the pandemic and the aftermath

SDCVS encounters many of the district's Voluntary sector organisations who are already involved in theme groups. During these difficult times we have noticed that Voluntary organisations will attend meetings where they believe they can access funding but are less inclined to participate in more strategic conversations

The role and need for the Group need to be reappraised.

In the last six months we have also considered the possibility of the participants, as few as they are, supporting the South Derbyshire Equalities, Diversity and Inclusion group and ensuring that the Voluntary sector plays an active role in this area. Equally, the Stronger Communities Group could take a different form and be project or survey based rather than having set meetings.

From a local authority perspective, the aim of the Stronger Communities Group is to enable the voluntary sector to influence how funds are distributed in SD along with policy direction, and to provide access to stakeholders.

Consequently, SDCVS have agreed to undertake a survey of organisations in the sector covering current issues and strategic direction and report back to the Partnership

In the meantime, however, the SDCVS continue to undertake valuable research and inform the partnership of current trends and issues

During the period the following reports were published



Nine Protected  
Characteristics The i



50+ Survey V2.pdf



Please note that the Social Mobility Report is for partnership only and should not be shared more widely.

Issues that the Partnership could add value to (time will be given at the Board meeting for partner input/solutions to each theme group).

SDCVS are currently undertaking a Swadlincote Town Centre Research survey as a precursor to a joint funding bid to Motability. The survey which looks to understand accessibility issues for the elderly and disabled can be accessed here by copying and pasting the link in your browser - <https://forms.gle/6wkLBSoc3Wzt5PgG9> and is open to the end of June 2022.

SDCVS are also undertaking a research survey around Digital Inclusion. We want to understand the challenges and extent of digital exclusion in South Derbyshire. We need the local community to help us establish why some people are digitally excluded. What are the barriers to connecting and using digital equipment and how can we help people become more connected? The survey can be accessed here by copying and pasting the link in your browser - <https://forms.gle/Y92By8uAWhebdHNc9> and is open to the end of June 2022.

Through our Social Connectedness Project, we are starting to develop community networks within South Derbyshire encouraging local citizens to connect, engage, and socialise with the volunteers, groups and organisations providing social connection in their communities. So far, we have reached out in Hilton, Hatton and Etwall and will be engaging with more communities over the coming months.

For the past two years we've been facilitating a Children & Young People's Mental Health and Emotional Wellbeing Network. This has really helped voluntary/community organisations to raise their profile, and share their issues and concerns relating to the increase in children & young people's mental health especially during the pandemic. This network has also given organisations the opportunity to build up relationships and encourage more partnership working.

We've been facilitating monthly Community Forums for people to come along and share their issues/concerns and support each other. Subjects have included digital inclusion, domestic abuse, improving mobility and support for carers.

We attend the quarterly Area Forum meetings sharing up to date information relating to our direct services (Befriending, Home from Hospital, Active Travel, Safer Homes, Handy Person Help At Home and the Food Hub) and our community development work. We also liaise with the Council to promote these forums on our social media platforms.

Covid Connectors Network – we currently have 32 connectors around South Derbyshire who share information within their local communities digitally and non-digitally. During the pandemic the bulletins sent out were focused on Covid 19 but this has now changed to include more information around health and wellbeing and signposting to support services.

We work alongside Public Health to administer the South Derbyshire Small Grants funding pot. During the last year we have supported 18 applications to a wide range of voluntary/community organisations securing over £27,000 to support them with projects which help to reduce health inequalities.

Alongside all the above SDCVS continue to deliver services for individuals in South Derbyshire including Active Travel and Social Car, Befriending, Handy Person Help at Home, Home from Hospital, Safer Homes.

## THEME GROUP: SUSTAINABLE DEVELOPMENT

Highlight summary of progress against priorities in the Sustainable Communities Strategy.

### Unemployment

South Derbyshire local authority area (Claimant Count).

Mar 21	Jan 22	Feb 22	Mar 22	Change on month	Change on year	GB Mar 22
3.8%	2.3%	2.3%	2.3%	%	%	4.1%
2,620	1,595	1,550	1,555	+0.3%	-40%	

There are currently over 1,250 jobs available within a ten-mile radius of Swadlincote (DWP Find a Job).

### South Derbyshire Business Advice Service

The South Derbyshire Business Advice Service has delivered 85 advice sessions in the fourth quarter of 2021/22, including both new starts and established businesses.

A third of consumers are buying less so far in 2022 due to the rising costs of goods and services, and higher household bills and taxes; Clothing is the most common cost cutting target, followed by eating out, takeaways and food and drink shopping (KPMG, 2022). For companies this drop in disposal income comes at a time of rising utility, workforce and operating costs, and is expected to place further stress on, particularly consumer-facing businesses.

### COVID Business Support

The District Council has distributed over £30 million pounds in Covid business support grants to smaller businesses in South Derbyshire over the last 18 months. These grants schemes came to a conclusion in March 2022.

The Government has now provided the District Council with just under £2million of COVID-19 Additional Relief funding to distribute to eligible businesses in the District. The funding will be distributed in the form of a reduction on businesses' rates bill for 2021/2022.

The assistance is targeted at businesses that were not eligible for the Extended Retail Discount (covering Retail, Hospitality and Leisure), the Nursery Discount, the Airport and Ground Operations Support Scheme, Small Business Rates Relief (resulting in a £0 bill), or any other relief (resulting in a £0 bill).

All applications and evidence must be received no later than Sunday 31 July 2022. Further information: <https://www.southderbyshire.gov.uk/covid-19/business-rates-support-and-grants>

## **Merger of the National Forest Company (NFC) and National Forest Charitable Trust**

Having worked closely for many years, the two charities have come together to realise the shared ambitions for the National Forest as a whole and the Heart of the Forest area in particular. The merger will see the Trust's property (which includes a land portfolio and Conkers, as well as the National Forest Youth Hostel and the National Forest Camping and Caravanning Club site) transferring to the NFC, and the Trust itself being dissolved.

This is a major milestone for the National Forest, marking a new phase in its development. It comes at a time when ambitious plans for its communities, businesses and visitors alike are being set out in a new Heart of the Forest Masterplan Vision, which will bring inward investment, jobs, new facilities and regeneration for the area between Swadlincote, Ashby and Measham.

In addition, the merger will support the long-term development of Conkers as a flagship visitor attraction in the National Forest. Conkers will still be run by the current operator, Planning Solutions Ltd, and will see a series of investments and new features such as the arrival of a new RHS Chelsea Flower Show Garden this summer.

Championing the sustainable tourism sector across the whole of the National Forest will continue to be a high priority for the NFC, providing grants, guidance, advice and support for tourism businesses. Following the merger, the NFC's position to advocate, promote and invest in the visitor economy will be strengthened through new partnerships, broader reach and increased impact.

## **Levelling up Stoke-on-Trent, Staffordshire, Derby & Derbyshire: The road to success - A strategic transport road map to improve the A50/A500 North Midlands Manufacturing Corridor**

Midlands Connect is working with its Midlands Engine partners to deliver a collective ambition – to transform the A50/A500 east-west corridor into one of the primary locations for sustainable growth and investment in the UK. This will be driven by innovation, new technologies and supporting the move towards carbon neutrality, improved provision for HGVs and EV users and a frequent and much improved rail service that connects to an integrated transport offer in each major locality.

The report focuses on presenting a package of recommended transport improvements required along the A50/A500 which, it states, would provide the capacity, resilience and journey time reliability required to unlock sustainable growth, increasing productivity and supporting the transition to more sustainable means of travel including the provision of electric and hybrid vehicle facilities and charging infrastructure.

Midlands Connect will now work with Government and national bodies such as National Highways to seek their support in progressing at pace with its proposals ensuring the businesses, communities, towns and cities it serves are able to reach their potential and benefit from sustainable growth, healthier living and prosperity for decades to come.

Further information: <https://www.midlandsconnect.uk/media/1841/a50-500-report.pdf>

## **Derbyshire Investment Prospectus**

Invest in Derbyshire has published a Derbyshire Investment Prospectus to showcase the ambitions of the county and its constituent districts and act as a tool to communicate the investment asks for key sites/schemes to a domestic and foreign investor audience.

This inaugural Prospectus, produced by Derbyshire Economic Partnership and Marketing Derby with the help of colleagues in district and borough councils, includes 23 major regeneration and investment opportunities at sites across Derbyshire.

The Prospectus is available digitally on the Invest in Derbyshire website alongside three new short films which have been produced to showcase the innovation, connectivity and quality of life offer to investors.

Further information: <https://www.investinderbyshire.co.uk/resources/#prospectus>

## **Climate Action Plan**

South Derbyshire District Council's Climate Action Plan is the highest scoring District Council in the East Midlands in a report released by Climate Emergency UK. The Council's plan scored 70 per cent, well above the average of 43 per cent for district and borough councils, placing it in joint ninth out of all district and borough councils in the UK.

Climate Emergency UK has published the Council Climate Plan Scorecards, their assessment of councils' Climate Action Plans where each council is given an overall percentage and a 'scorecard'. The scorecard shows results from themes including governance, mitigation, targets, diversity, inclusion, education and training.

South Derbyshire District Council's plan received top marks for 'Measuring and setting emissions targets', as it 'clearly measured current carbon emissions in the District and set emissions targets for the whole district' and 'highlighted action areas for emissions reductions and not simply carbon offsetting.' South Derbyshire District Council is one of only 86 councils scored to have a net-zero target of 2030 or earlier.

Further information: <https://www.southderbyshire.gov.uk/our-services/climate/climate-and-environment-emergency/what-the-council-is-doing/climate-environment-action-plan>

## **Welcome Back Fund**

The Welcome Back Fund – a Government-funded programme to undertake marketing and events to encourage visitors safely back into the town centres - has continued to support promotional activities including the following:

- A programme of weekend events over the Winter based around children's characters including 'The Gruffalo', providing free entertainment and activities.
- Production of town maps:  
Swadlincote: <https://www.visitsouthderbyshire.co.uk/wp-content/uploads/2021/03/Shopping-Guide-Landscape-Pages.pdf>  
Melbourne: <https://www.visitsouthderbyshire.co.uk/wp-content/uploads/2022/03/Melbourne-Map-for-web.pdf>

## **Shared Prosperity Fund**

The Government has announced the Shared Prosperity Fund. The Fund will be allocated as opposed to using competition and will be a mix of revenue and capital. The Government define the three priorities as:

- Investment in people
- Investment in communities and place, and
- Investment for local businesses.

Funding for South Derbyshire is £2,156,374 over the three years, profiled as follows:

	<b>2022-23</b>	<b>2023-24</b>	<b>2024-25</b>
South Derbyshire	£261,696	£523,392	£1,371,286
Anticipated capital/revenue split	90% revenue	87% revenue	80% revenue

Match funding will not be required to unlock an area's allocation. Although match funding is not required and will not form part of the investment plan assessment criteria, all lead local authorities are strongly encouraged to consider match funding from the private, public and third sectors and leverage options when selecting communities and places and supporting local business interventions to fund.

Important dates:

- Fund launch: 13 April 2022.
- Investment plan submission window: 30 June 2022 to 1 August 2022.
- First payments expected to lead local authorities: from October 2022.
- Funding period: April 2022 to March 2025.

The Fund is intended to support the Government's wider Levelling Up agenda, including:

- Boosting productivity, pay, jobs and living standards.
- Spreading opportunities and improving public services.
- Restoring a sense of community, local pride and belonging.
- Empowering local leaders and communities.

To access their allocation, each place will be asked to set out measurable outcomes they are looking to deliver, and what interventions they are choosing to prioritise in an Investment Plan. These will be submitted this summer for UK Government approval. Places will be able to choose from investment across three investment priorities of communities and place, local business and people and skills.

### **1. Communities and Places**

- Strengthening our social fabric and fostering a sense of local pride and belonging, through investment in activities that enhance physical, cultural, and social ties and amenities.
- To build resilient and safe neighbourhoods, through investment in quality places that people want to live, work, play and learn in.

### **2. Supporting local businesses**

- Creating jobs and boosting community cohesion, through investments that build on existing industries and institutions.
- Promote networking and collaboration, through interventions that bring together businesses and partners within and across sectors to share knowledge, expertise and resources, and stimulate innovation and growth.
- Increase private sector investment in growth-enhancing activities, through targeted support for small and medium-sized businesses.

### **3. People and Skills**

- Boost core skills and support adults to progress in work, by targeting adults with no or low-level qualifications and skills in maths and upskill the working age population.
- Support disadvantaged people to access the skills they need to progress in life and into work.
- Support local areas to fund local skills needs and supplement local adult skills provision.
- Reduce levels of economic inactivity and move those furthest from the labour market closer to employment, through investment in bespoke employment support tailored to local needs.



Lead authorities will be using funding in 2022/23 and 2023/24 for priorities 1 and 2. For priority 3, funding will commence in 2024/25, with lead authorities expected to collaborate with other stakeholders and tiers of local government through local partnerships:

- comprehensive and balanced local partnerships will be a core component of how the Fund will be administered locally.
- local leaders will be tasked to work with a diverse range of local stakeholders.
- local partners will support the authority leading the Fund in each place to develop their Investment Plan.

Further information: <https://www.gov.uk/government/publications/uk-shared-prosperity-fund-prospectus/uk-shared-prosperity-fund-prospectus>

### Any action required of Partners i.e. attendance or promotion of an event.

To raise awareness of the initiatives highlighted above and make referrals, including:

- Derbyshire Business Start-up Programme – offering grants and advice to new start businesses:  
<https://www.derbyshire.gov.uk/business/support-advice/vision-derbyshire/vision-derbyshire-business-support.aspx>
- Swadlincote Innovation Centre – offering a package of offices suites, shared facilities and business support to new enterprises:  
[www.swadlincoteinnovationcentre.co.uk](http://www.swadlincoteinnovationcentre.co.uk)
- Green Entrepreneur Fund - grant fund for businesses interested in developing, investing and training in green energy and carbon reduction schemes:  
<https://www.derbyshire.gov.uk/business/green-entrepreneurs-fund/green-entrepreneurs-fund.aspx>
- Way to Work Jobsfair – job vacancies, training opportunities and supporting agencies at Burton Town Hall on 30 June 2022.



**Agenda Report to the Board**  
**Item 9. PARTNERSHIP BUDGET UPDATE**

**1.0 Recommendations**

- 1.1 To provide funding of £1,500 for the Work Club project (Old Post Regeneration Association), matching that provided by Derbyshire County Council (Public Health).
- 1.2 To invite requests for funding for new projects that will contribute to the achievement of the Partnership's aims.

**2.0 Purpose of Report**

- 2.1 The District Council acts as accountable body for the South Derbyshire Partnership. This report provides an overview of the Partnership's current financial position.

**3.0 Detail**

- 3.1 It is proposed that the Partnership provides match funding for two projects in 2022/23 that have been put forward by the Healthier Communities Group (with match funding from Derbyshire County Council - Public Health):
  - ALICE (South Derbyshire CVS) – project already approved by the Board for 2021/22 but postponed due to Covid restrictions. The project supports individuals who are most disadvantaged and find it difficult to access traditional learning and work opportunities. It offers activities which enable individuals to learn, develop new skills, improve their mental and physical wellbeing and confidence, and progress into paid work, work experience or the opportunity to contribute through community volunteering.
  - Work Club (Old Post Regeneration Association) – the project supports local job seekers who are ready to re-enter the workforce but need additional support, help and guidance in an accessible non-threatening venue. Support and help consists of building confidence and motivation, developing/increasing IT skills, CV writing, interview skills, improved letter writing and form completing skills, support setting up and using email accounts and Find a Job.
- 3.2 It is proposed to set aside up to £13,000 and invite funding requests for initiatives that meet the following criteria. (This would leave approx £5,000 in the Partnership's budget should it wish to support any other projects later in the year):
  - Directly contribute to the South Derbyshire Partnership's aims, as set out in the Community Strategy and theme Action Plans.
  - Focus on research, consultancy and pilot projects testing the feasibility of new ideas and initiatives.

### 3.3 Applications must be:

- submitted by voluntary or community organisations operating in South Derbyshire.
- for one-off grants.
- for projects that are not eligible for other small grant schemes operating in the area, including the health and wellbeing-related South Derbyshire Small Grants (including Improving Health and Wellbeing Grant, Self Help Grant and Emotional Wellbeing of Children and Young People Grant).
- for projects that will be delivered during 2022/23.

### 2022/23 Distribution of Funds

3.4 South Derbyshire District Council has provided £10,000 of funding to the Partnership for 2022/23. Several projects planned for 2021/22 were not able to go ahead and these funds have been carried forward to 2022/23.

<b>2022/23</b>	<b>£</b>
<b>Income</b>	
Balance from previous years	11,424.05
Adjustment (correction for Community Awards and carry forward for ALICE)	-26.80
SDDC contribution for 2022/23	10,000.00
<b>TOTAL INCOME</b>	<b>21,397.25</b>
<b>Expenditure</b>	
• <b>Project Awards:</b>	
ALICE Project (South Derbyshire CVS) – match funding for £3,500 from Derbyshire County Council (Public Health Locality Funding) – postponed from 2021/22 due to pandemic restrictions	1,500.00
• <b>Project Proposals:</b>	
Work Club (Old Post Regeneration Association) - match funding for £3,500 from Derbyshire County Council (Public Health Locality Funding)	1,500.00
<b>TOTAL EXPENDITURE</b>	<b>3,000.00</b>
<b>BALANCE</b>	<b>18,397.25</b>

3.5 A number of the projects supported by the Partnership also attract match funding contributions from other public, private and voluntary/community sources, in particular Public Health Locality funding from Derbyshire County Council.

#### **4.0 Financial Implications**

4.1 Supporting the proposed project will leave the Partnership with a positive balance of £18,397.25.

#### **5.0 Conclusions**

5.1 The Partnership is able to directly and indirectly influence significant expenditure taking place in the District, through its own budget and the match funding this attracts and, in particular, through the involvement of the Theme Groups in allocating resources and influencing organisations' activities in the local area.

Contact: Mike Roylance, South Derbyshire District Council  
Tel. (01283) 595725  
Email. [mike.roylance@southderbyshire.gov.uk](mailto:mike.roylance@southderbyshire.gov.uk)