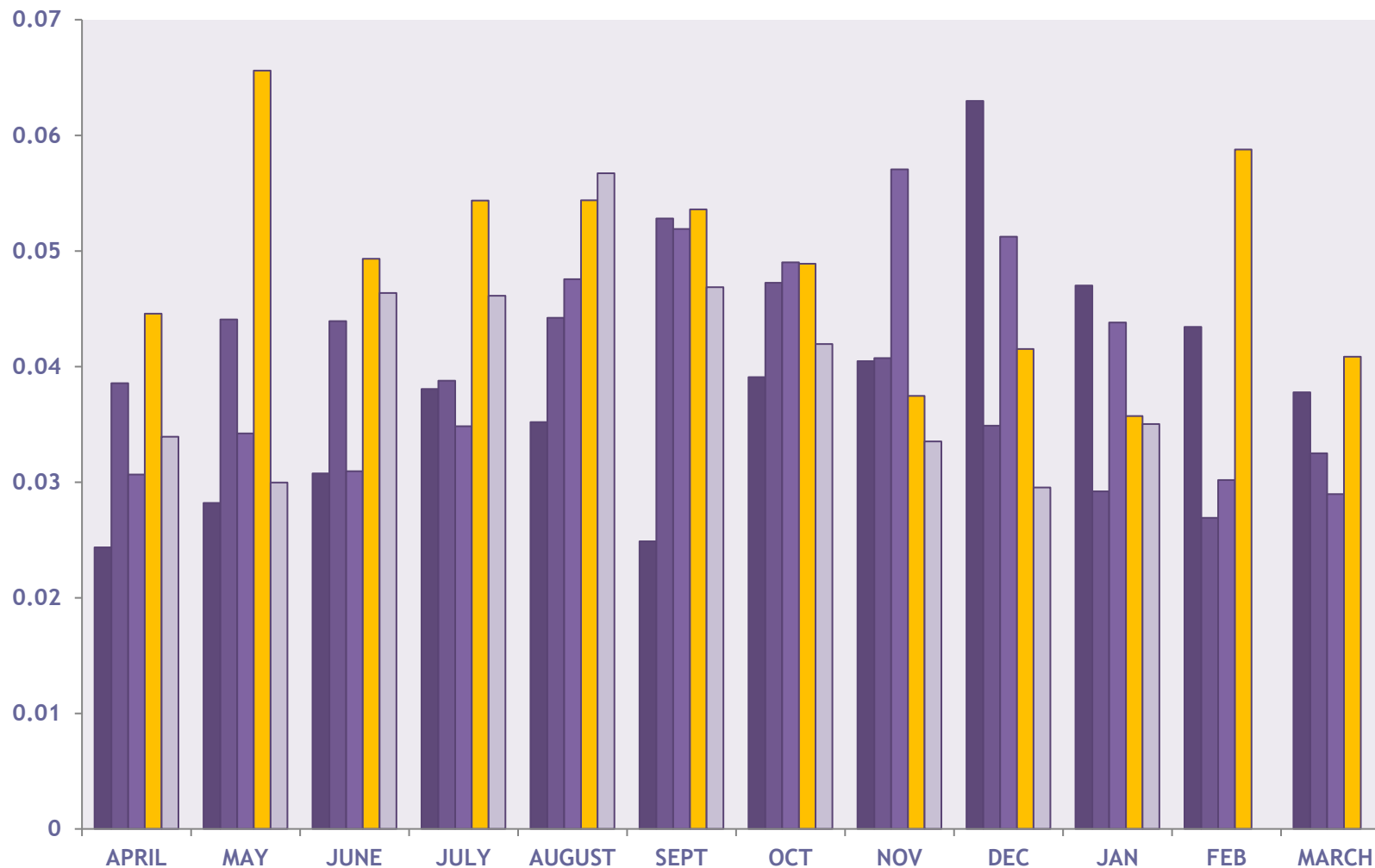


% Sickness Absence - January 2015



Current Month

Days Lost = 173

Days Lost per Employee = 0.70

No of Employees Employees 35

Long Term Sick = 5

14.18% of employees were absent at some time in the month

- % Absence 10/11
- % Absence 11/12
- % Absence 12/13
- % Absence 13/14
- % Absence 14/15

YTD Totals
Days Lost= 2120

Days lost per person 8.37
Target : 8.00