



**SOUTH DERBYSHIRE
PARTNERSHIP**

Mike Roylance
**Head of Economic Development
and Growth**

South Derbyshire District Council
Civic Offices, Civic Way,
Swadlincote, Derbyshire, DE11 0AH.

Please ask for Sally Cope
Tel: (01283) 221000 Ext. 5791
DDI: (01283) 595791
Email: sally.cope@southderbyshire.gov.uk
www.southderbyshire.gov.uk

13 October 2020

Dear Sir/Madam

BOARD MEETING

A Board Meeting of the South Derbyshire Partnership will be held virtually via Microsoft Teams on **Tuesday 20 October 2020 at 10:00 am**. You are requested to attend.

Yours faithfully



Allison Thomas
Strategic Director – Service Delivery

Enc.





Voting Members of the Board:

Local Authority Sector

Councillor Martyn Ford (**Chairman**) (South Derbyshire District Council)
Councillor Stephanie Marbrow (Derbyshire Association of Local Councils)
Allison Thomas (South Derbyshire District Council)
District Councillor Kevin Richards (South Derbyshire District Council)
County Councillor Mrs Linda Chilton (Derbyshire County Council)
District Councillor Martin Fitzpatrick (South Derbyshire District Council)

Other Public Sector

Lena Ratcliffe (Derbyshire County Council, Children's Services)
Vivien Sharples (The Pingle Academy)
Chief Inspector Richard Lambert (Derbyshire Constabulary)
Vicky Smyth (Derbyshire County Council – Public Health)
John Beaty (Burton & South Derbyshire College)
Brenda Nolan O'Shea (Derby and Derbyshire Clinical Commissioning Group)

Private Sector

Julie Langley (Toyota Motor Manufacturing UK Ltd)
Colleen Hempson (East Midlands Airport)
John Everitt / Louise Driver (National Forest Company)
Kim Coe (Sharpe's Pottery Heritage and Arts Trust)

Voluntary/Community Sector

Sally Eccles (Home Start Derby & South Derbyshire)
Roger Moors (South Derbyshire CVS)
Dr Claire Teeling (Grow Outside C.I.C.)
Matt Buckler (Derbyshire Wildlife Trust)
Revd Dr Mike Firbank (Churches Together in Swadlincote)





Agenda

Time and Date 10am, Tuesday 20 October 2020

Venue Virtual

Item	Description	
1	Introductions, apologies and to note any substitutes appointed for the Meeting.	10:00am
2	Declarations of Interest.	
3	To receive the Minutes of the Meeting held on 29 January 2020 (Attached).	
4	Matters Arising. Barry Woods (Friends of Newhall Park/Old Post Centre) Thank you to Kerrie Fletcher, SD CVS	
5	Overview of Covid-19 Response and Recovery (Allison Thomas).	10:10am
6	Theme Updates: <ul style="list-style-type: none"> • Safer Communities (Chris Smith). • Stronger Communities (Mike Firbank/Cathy Miles). • Healthier Communities (Vicky Smyth). • Sustainable Development (Mike Roylance). • Children & Young People (Dave Beris). Incorporating Sustainable Community Strategy Action Plan updates - Appendix 1 (Report attached).	10:25am
7	Budget Update (Mike Roylance). (Report attached).	11:25
8	Feedback and Future Agenda Items.	11:30 Finish
9	Date of Next Meeting: Tuesday 26 January 2021. Time: 10:00am Venue: Virtual	





SDP/03. PRESENT

Local Authority Sector

Councillor Martyn Ford (Chairman), Councillor Kevin Richards, Allison Thomas (South Derbyshire District Council), Councillor Stephanie Marbrow (Derbyshire Association of Local Councils), County Councillor Mrs Linda Chilton (Derbyshire County Council).

Other Public Sector

Vicky Smyth (Derbyshire County Council), John Beaty (Burton and South Derbyshire College), Chief Inspector Richard Lambert (Derbyshire Constabulary), Brenda Nolan O'Shea (NHS Derby and Derbyshire Clinical Commissioning Group).

Private Sector

Kim Coe (Swadlincote and District Chamber of Trade), Colleen Hempson (East Midlands Airport).

Voluntary/Community Sector

Dr Claire Teeling (Grow Outside C.I.C.), Matt Buckler (Derbyshire Wildlife Trust), Rev. Dr. Mike Firbank (Churches Together in Swadlincote/CVS), Barry Woods (Friends of Newhall Park/Old Post Centre), Sally Eccles (Home Start Derby and South Derbyshire), Kerrie Fletcher (South Derbyshire CVS).

Also in Attendance

Kevin Stackhouse, Mike Roylance, Chris Smith, Nicola Lees and Sally Cope (South Derbyshire District Council), Cathy Miles (South Derbyshire CVS), Kay Simcox (Derbyshire Fire and Rescue), Shelley Cooper (Derbyshire County Council), PC Paul Russell and Joe Pilgrim (Derbyshire Constabulary).

SDP/04. APOLOGIES

Apologies for absence from the Meeting were received from:

Lena Ratcliffe (Derbyshire County Council), Justin Holford (Derbyshire County Council), John Everitt and Louise Driver (The National Forest Company), Vivien Sharples (The Pingle Academy).

SDP/05. INTRODUCTIONS, APOLOGIES, SUBSTITUES NOTED

Introductions took place.

Apologies were noted.

SDP/06. DECLARATION OF INTEREST

No Declaration of Interest were noted.





SDP/07. MINUTES

The Minutes of the Meeting held on 20 November 2019 were taken as read and approved as a true record.

SDP/08. MATTERS ARISING

Citizens Advice Mid Mercia have been invited to bid for further lottery funding for basic IT training to enable them to continue with the Dig-IT Project.

SDP/09. SOUTH DERBYSHIRE DISTRICT COUNCIL – BUDGET 2020/21

Kevin Stackhouse, Strategic Director (Corporate Resources) gave an overview of the proposed District Council budget for 2020/2021. In summary the General Fund remains a relatively strong financial base and the four forms of funding the Council received were explained. The new homes bonus has increased due to the amount of new housing, however Right to Buy is impacting on the stock of council housing. Spending is projected to be greater than income over the medium term; waste collection and recycling may put pressure on budgets from 2021/22. The Council is also mindful of future budget pressures including commitment on Climate Change.

Government is to consult in the Spring on the future of the housing incentive and delivery of houses in areas where they are needed most, and the need to provide additional services and infrastructure.

Council Tax reduction scheme is still available to support tenants and those struggling to pay.

SDP/10. THEME: SAFER COMMUNITIES

Chris Smith, the Theme Group lead, provided the Board with an overview of the purpose of the Safer Communities Group and provided an explanation on the increases in Recorded Crime, following the publication of the Derbyshire Strategic Intelligence Assessment report. Derbyshire has undergone an extensive programme of improvements in recording processes. The results of this activity have seen significant increases in certain crime rates which were explained.

The only crime where South Derbyshire differs from the force wide pattern is Theft from Motor Vehicle with a 1% increase - Hotspots are: Aston, Woodville and a big increase in Church Gresley during 2019, linked to car thefts by organised gangs.

Key findings were provided to the Board Members. Drug offences have increased in Swadlincote and Woodville and County Lines is a national issue and training for wider partners, with an E-Learning package is now in place.





Police and Crime Commissioner (PCC Elections) will be held in 2020. This may lead to some changes in how Community Safety Partnerships operate.

Extinction rebellion was discussed – this is an environmental movement, which has gained a large amount of public support both nationally and in Derbyshire. Its protests have all been non-violent in nature, but the disruption they can cause can be a drain on Police resources.

Hate Crime Incidents recorded in South Derbyshire during 2019 (67), were the fourth lowest in the County.

Derbyshire County Council is currently tendering for the Domestic Abuse Service provider, an update will be given at the next meeting. **ACTION: CS**

The key recommendations were that the Safer South Derbyshire Partnership identify four to six priorities to focus on, these were discussed; the new Partnership Plan will be launched in April 2020.

SDP/11. DERBYSHIRE POLICE – RURAL CRIME TEAM

Derbyshire Constabulary (Wildlife & Heritage Crime Officers) PC Paul Russell and PC Joe Pilgrim gave an introduction to their role within the Derbyshire Rural Crime Team (DRCT) and how to contact them by email: DRCT@derbyshire.pnn.police.uk or via DRCT social media where they are promoting the use of 'whats app' and facebook groups to improve links with rural community.

An overview of team and command structures was provided; along with a brief overview of the crimes and issues the team have to deal with the, priorities being; theft of quad bikes, livestock worrying, theft of farm machinery, theft of livestock, suspicious behaviour, rural land rover theft, theft of diesel from rural areas, fly grazing, fly tipping and cannabis production. The team has also taken on the role of Heritage Crime Officers. Heritage crime is any offence which harms the value of England's heritage assets and their settings for this and future generations. The type of incidents range from theft of lead or artefacts from Churches to illegal metal detecting on ancient sites and off road vehicles damaging ancient sites.

Derbyshire Constabulary works very closely with the National Wildlife Crime Unit NWCU when investigating cases of wildlife crime. Key priorities are:

Badger Persecution

Bat Persecution

The Convention on International Trade in Endangered Species (CITES) issues

Poaching – includes poaching of deer, fish and hare coursing

Birds of prey

An overview was given of the partners that the DRCT currently works alongside, with work ongoing to try to improve cross border links with Warwickshire, Leicestershire and Staffordshire.





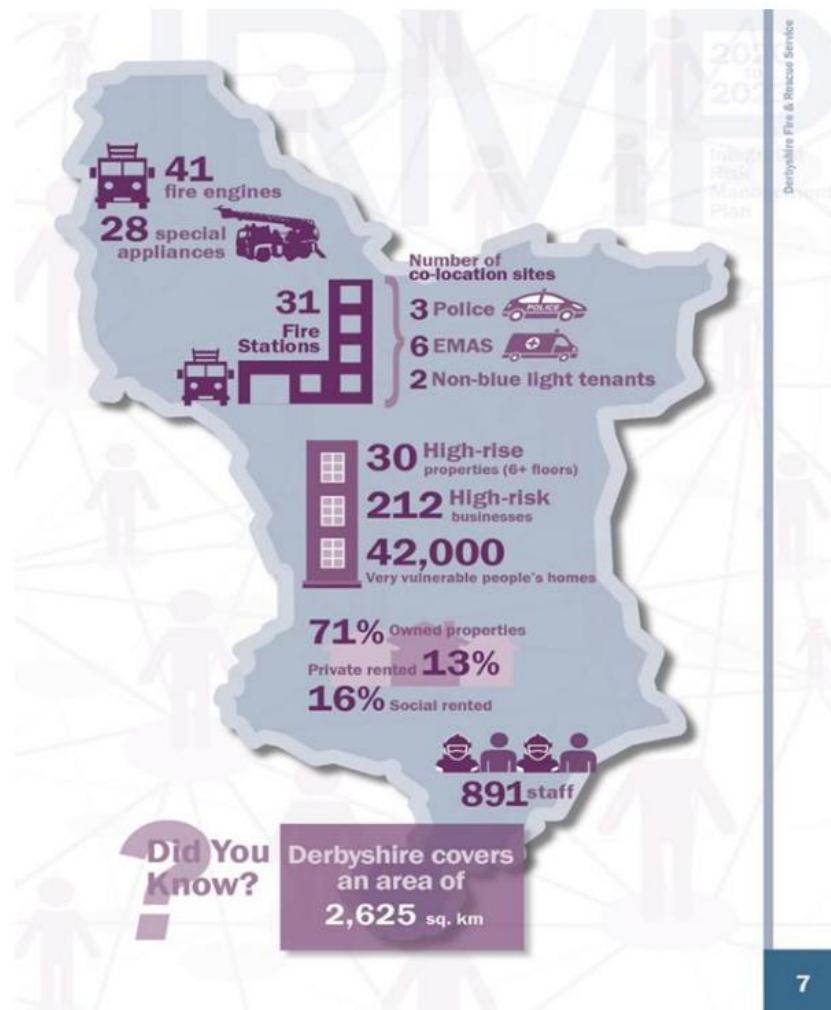
SDP/12. DERBYSHIRE FIRE AND RESCUE SERVICE – SERVICE PRIORITIES

Kay Symcox from Derbyshire Fire and Rescue presented to the Board – the Vision – “Making Derbyshire Safer Together” which will be achieved through four key areas of work:

- Collaboration and Partnership Working
- Prevention
- Protection
- Response

The Service is currently awaiting to hear their funding for 2020/21 and the funding challenges ahead.

Summary of Derbyshire cover:





An independent review by Her Majesty's Inspectorate of Constabulary and Fire and Rescue Services (HMICFRS) has been undertaken - Derbyshire Fire and Rescue Service (DFRS) has been awarded a 'good' rating in all three key areas.

The key highlights of training that is undertaken in 'Flooding' was provided including the work with partners to keep up to date with emergency flooding plans and training at risk sites, together with talks in schools to highlight the dangers of water.

The ongoing work to keep the community safe and well, includes domestic premises checks, smoke alarm fittings and partner referrals to prevent fires in the home.

An ongoing concern regarding the rate of false alarms was raised with 101 false alarms recorded.

Incidents attended 2018-2019 were as follows:

- 64 primary – accidental
- 13 primary – deliberate
- 36 secondary – accidental
- 30 secondary - deliberate
- 27 road traffic collisions
- 20 vehicle fires
- 61 special services (EMAS/LIFTS/RING REMOVALS)
- 13 outdoor fires

DRFS also undertakes a programme of inspection to business premises identifying risks.

Other future risks for South Derbyshire were highlighted: - ageing and increasing population, climate change, new/old housing stock, HS2 and funding/budgets.

SDP/13. THE NATIONAL FOREST VISION:

The National Forest Company; provided a short video 'The National Forest Vision; a Greenprint for the Nation'; which was played to the Board members. Consultation information can be found on www.nationalforest.org/greenprint

SDP/14. SUSTAINABLE COMMUNITY STRATEGY – QUARTER 3

The Theme Group's reporting system highlights areas that the Partnership could add value to:-

Safer Communities

A request for the Partnership to assist with promoting the Safer Homes Scheme

Contact: South Derbyshire CVS tel: 01283 219761 or email projectsupport@sdcvs.org.uk





Note: The Liberation Day 2020 event planned for this May has had to be postponed until later in the year. The Board will be informed of the rescheduled date once details of the event have been finalised.

Stronger Communities

Promote information about the Sharing Spaces event.

Healthier Communities

Promotion of the new micro small grants opportunity to communities.

Children and Young People - In the absence of Lena Ratcliffe – Shelley Cooper - provided highlights.

Youth grants are still available to voluntary groups.

An offer to present to a future meeting the new Early Help offer arrangements.

Sustainable Development

Assistance requested in identifying training providers that will deliver funded sector courses in Swadlincote, as well as employers interested in providing work experience and job opportunities.

Promote Digital Derbyshire to residents and businesses across South Derbyshire.

A discussion with regards to issues with the Midland Classic Airline 9 bus service in Potter Street, Melbourne. The Chairman asked that the interested parties liaise outside of the meeting.

SDP/15. BUDGET UPDATE

The Board approved a move to co-production of projects by the Partnership and to note the current financial position of the Partnership.

SDP/16. FEEDBACK AND FUTURE AGENDA ITEMS

The Chairman asked for feedback on the format of the Board meetings and it was suggested to allow an extra 30 minutes to focus on more in-depth discussion of issues.

Strategic Co-ordinating Group to discuss further. **ACTION: MR**





SDP/17. DATE OF NEXT MEETING

Date: Wednesday 8 April 2020
Time: 10:00am
Venue: Sharpe's Pottery Museum, West Street, Swadlincote, Derbyshire, DE11 9DG.

Councillor M FORD

CHAIRMAN

The Meeting terminated at 12:10.





Highlight summary of progress against priorities in the Sustainable Communities Strategy.

Young people are more aware and informed about risks to their safety from child sexual exploitation, sexting and drugs:

Schools inputs - Work is being undertaken by police to develop a set of resources for police representatives to deliver into schools. The subject list is still being developed and they will only be delivered where police deem there to be these issues in the area. For example, knife crime will only be delivered in areas where there has been a problem, education around County Lines will be delivered in South Derbyshire etc. Inputs will be matched via a hot-spot map developed by the police. Safeguarding issues will be delivered by schools and crime issues by the police. Prison Me No Way (PMNW) and 'learned experience' inputs are no longer to be used.

ASB in Parks- Following the easing of the lockdown there was a large increase in ASB both in terms of neighbour issues and with groups of young people causing a nuisance in parks and open spaces, particularly in the urban parks at Newhall, Eureka and Gresley. Local police SNT Officers have been in daily communication with the Councils Communities and Cultural Services Teams and joint patrols have been carried out with the Councils Community Enforcement Officers. Advice and warning letters have been given and to assist with identifying offenders, CCTV cameras have been installed at Maurice Lea Park. Over the summer period ASB figures have continued to drop and are now back to what would be expected at this time of year.

Partnership ASB Meetings - Multi-agency partnership ASB Meetings recommenced in September after a break over the summer. Two meetings are held every 6 weeks covering the North and South of the District and are attended by Police SNT officers, SDDC ASB Officer, Housing Officers, Environmental Health Officers, Schools and Childrens Services. The meetings discuss any young people causing ASB issues in the community, ongoing neighbour issues, vulnerable ASB victims and hotspot locations.

Children at Risk of Exploitation Panel (CRE) meetings have continued to be held virtually (since lockdown); the meeting discusses any young people who are at risk of exploitation and ensures appropriate family support is put in place and that local police are made aware of the individuals .

More people feel safe and secure in their home and in the community particularly those who are most vulnerable:

Safer Homes Scheme The Safer Homes Scheme was temporarily suspended when lock down commenced in April, and through to July the Safer Homes worker assisted in delivering essential medical and food parcels to vulnerable individuals who were unable to leave their property.





The scheme recommenced in July and is now operating as per normal. The scheme works by giving advice on crime prevention and home security. In some cases, they are able to install additional door and window locks and other appropriate equipment free of charge.

The scheme is funded by the South Derbyshire Community Safety Partnership and is operated on a day-to-day basis by South Derbyshire CVS.

Referrals for the scheme can come from any of the following:

- Social Services - Adult Services
- South Derbyshire District Council
- Derbyshire Police
- South Derbyshire Primary Care Trust
- Housing Associations
- Citizens' Advice
- South Derbyshire CVS
- Self-referrals if over 60's, disabled or vulnerable

For further information or to make a referral you can contact South Derbyshire CVS either by email: projectsupport@sd cvs.org.uk or call 07458 304316.

Pub Watch South Derbyshire Community Safety Partnership (CSP) has held monthly Pub Watch meetings since the pubs reopened to ensure licensed premises are kept updated with government regulations and support is given to those who need it. Police and Council Licensing Officers attend to answer any questions and queries and the pubs can raise any individuals who cause trouble and put them forward for a Banning Order. There are currently 21 individuals serving banning orders with 8 receiving bans since August.

South Derbyshire Domestic Abuse Group

A new South Derbyshire Domestic Abuse Group has been set up to ensure key partners are working together to promote and raise awareness of domestic abuse and what support is available, and to ensure that local services are meeting the needs of the local community.

The group which had its first meeting in August will work together on campaigns, will identify and share good practice, will discuss any local issues or gaps in service provision, and will try to address them locally or escalate them as appropriate.

Foremark Reservoir – As lockdown eased in June a huge number of people visited tourist locations such as Foremark Reservoir causing major parking and anti-social behaviour issues. During the warm weather people were parking on the verges where there are double white lines in the road which as well as an offence was extremely dangerous as it forced cars to cross the double white lines in the road. Multi agency meetings were called by senior Police and Council officers and action plans were put in place to combat the issues. The action plan included an increase in signage on the verges making it clear it is an offence to park there.





More parking spaces were made available inside the site, and double yellow lines were added in small areas outside the entrance. Police provided extra patrols and the cutting of the grass verges outside were delayed so people were less keen to park on them. Fortunately, the action plan was successful and very few further issues were encountered at the site.

Issues that the Partnership could add value to (time will be given at the Board meeting for partner input/solutions to each theme group).

Any action required of Partners i.e. attendance or promotion of an event.

Assistance with promoting Derbyshire Domestic Abuse Services.

Derbyshire Wish are the new providers of Domestic Abuse Services across Derbyshire and are providing the following services across Derbyshire:

Community based support for Adults: Support provided for adults living in the community who are experiencing or have experienced domestic abuse. At present due to COVID 19 this support is mainly via phone contact however other arrangements can be made depending on the needs of the victim.

Community based support for Children: Although limited at the moment in being able to carry out direct one to one support with children and young people in the local community, the Children's team are maintaining phone contact and support with families and preparing assessments over the phone with parents.

A range of **refuge accommodation** (communal and dispersed) is offered throughout the Amber Valley, Dales and South Derbyshire areas. These can be accessed by men (dispersed only) or women, with or without children. This service is running as normal and referrals for spaces are via Derbyshire Domestic abuse support line. Stringent hygiene and social distancing procedures are in place to protect clients and staff.

All referrals to services are via Derbyshire Domestic Abuse Help Line: 08000 198 668. The Helpline has also recently launched a new website which provides alternative ways of contacting them including a chat facility:
<https://www.derbyshiredomesticabusehelpline.co.uk/>

The Project Manager for Derbyshire WISH is Janet Goodison who can be contacted via email janet.goodinson@ncha.org.uk or tel: WISH Office: 01773 765900.





STRONGER COMMUNITIES

Report to follow.



Our Environment | Our People | Our Future

www.southderbyshire.gov.uk

HEALTHIER COMMUNITIES

Report to follow.





SUSTAINABLE DEVELOPMENT

Highlight summary of progress against priorities in the Sustainable Communities Strategy.

South Derbyshire Environmental Forum

The South Derbyshire Partnership has awarded funding to the Environmental Forum to continue its work in 2020/21. This is focusing on:

Conservation Training – providing volunteering opportunities, including for people that are changing career. The programme is working with the National Forest Company and Transforming the Trent Valley team, and has grown through word of mouth. The Forum is also looking to link up corporate groups wanting team building and conservation activities - matching them with village groups which need a job doing. Further details of Environmental Volunteering can be found at: <https://www.southderbyshire.gov.uk/our-services/environment/environmental-forum-and-volunteering/environmental-volunteering>

Recording Wildlife Programme – monitoring wildlife is a useful indicator of climate change. A project has been set up with Derbyshire Wildlife Trust to record findings, using the District Council's website, a user friendly way to record, get sightings identified and encourage wildlife recording. Further information: <https://www.southderbyshire.gov.uk/our-services/environment/environmental-forum-and-volunteering/wildlife>

Social Media Work – the team have been experimenting with seminars on Facebook Live - with small scale advertising this has reached 28,000, with 234 people engaged.

Labour Market Guide

The Partnership funded the production of a South Derbyshire Labour Market Guide, which has now been printed and distributed to Secondary schools in the District and to the Jobcentre. This will enable teachers, college tutors, job centre advisors, employability mentors/coaches and anyone else interested, to support individuals with their career management. The guide aims to help individuals to make informed decisions about choices both in learning and work. The Guide can be downloaded here:

<https://www.southderbyshire.gov.uk/assets/attach/6310/Invest%20in%20South%20Derbyshire%20A5%20leaflet%202020%20download.pdf>

Work Club at the Old Post Centre, Newhall

Funding has been awarded by the Partnership and Derbyshire County Council (Public Health) to enable the Old Post Centre to help residents to get back into work. Commencing in the Autumn, the Centre will provide advice and support in job searching, CV writing and interview preparation.





Labour Market Overview

Total number of people claiming Universal Credit (UC) in Swadlincote:

Aug-19	May-20	Jun-20	Jul-20	Aug-20	Change on Month	Change on Year
1,594	4,531	4,654	4,628	4,704	1.6%	195.1%

The total number claiming will include people working but on a low income, and some may be workers who have been “furloughed”, as the payment due to them as part of the CJRS will reduce their income to a level where they become eligible for support from UC.

Claimant Count

This data combines people claiming Universal Credit who are seeking employment and people claiming New-Style Jobseekers Allowance.

South Derbyshire Local Authority Area:

Aug-19	May-20	Jun-20	Jul-20	Aug-20	Change on Month	Change on Year
995	2,910	2,730	2,730	2,870	5.1%	188.4%

Recruitment

DWP is currently working with businesses and training providers to deliver sector-based work academies with employers, and mentoring circles which give help to younger job seekers. There are currently vacancies with Swadlincote and Burton based employers across a range of sectors, including at Centrum in Burton and at East Midlands Gateway/SEGRO Park. Further information:

<https://slp-emg.com/c/community/employmentopportunities.php>

Kickstart

Employers can use the Kickstart scheme to create new six-month job placements for young people who are currently on Universal Credit and at risk of long-term unemployment. The scheme aims to support the participants to gain the experience they need to find work after completing the scheme. Funding is available for 100% of the relevant National Minimum Wage for 25 hours a week, plus associated employer National Insurance contributions.

Businesses recruiting more than 30 people as part of the Kickstart scheme can submit a bid directly online through the main Kickstart page on www.gov.uk Smaller businesses looking to recruit fewer than 30 young people can apply for funding but must partner with other employers or organisations in order to create a minimum of 30 jobs before applying.





East Midlands Chamber and Derby College are both looking to operate as “Kickstart gateways”, collating placements from smaller employers.

Youth Hub

Department of Work and Pensions is exploring the idea of a Youth Hub in Swadlincote town centre working with local partner organisations and providing a range of support to younger jobseekers.

Skills Support for the Workforce (Serco)

Skills Support for the Workforce (SSW) is a programme developed to upskill employees within small and medium-sized businesses, including staff being made redundant. It aims to provide recognised accredited qualifications and bespoke training courses to enhance employees’ skills, increase the competitiveness of businesses and boost the local economy. SSW is co-financed by the Education and Skills Funding Agency and the European Social Fund. Further information: <https://www.serco-ese.com/skills-support-for-the-workforce/regions/derby-and-derbyshire>

Mercia Park

Mercia Park is a new business park located on A444 at Junction 11 of the M42, just outside the South Derbyshire boundary. Construction is currently underway, with the contractor looking to be on site for approx. 2 years and ultimately create some 3400 jobs (including relocations). The two main occupiers will be DSV Group and Jaguar Land Rover’s global parts operation. The scheme will seek to employ local construction workers and use local suppliers, and work with local colleges. There are also a number of community elements which will include planting 30 acres of new woodland and operating a community grant fund. Further information:

<https://merciaparkconstruction.co.uk/>

South Derbyshire Business Advice Service

The Service has continued to support businesses throughout the pandemic with telephone and virtual contact only. 55 businesses were supported in July, 41 in August and 36 in September. In addition to queries about the Covid support schemes, there has been increasing interest in start-ups from those who have been made redundant.

Woodville to Swadlincote Regeneration Route

Planning permission has been granted for 300 homes, a local centre to include food store and restaurant, and 14,000sqm of industrial floor space on land adjoining the Regeneration Route.

Barrow Bridge Industrial Estate

Work has commenced at Sinfin Lane, Barrow on Trent on a new estate that will provide an additional 7,230 sqm of industrial units, to include business incubator units for small start-ups.





Trent and Mersey Canal

The Canal & River Trust is reporting high numbers of walkers/cyclists using the canal towpaths during the ongoing pandemic. Resurfacing works on the towpaths in Willington and Shardlow will start late November. The Trust links can be found below:

- Volunteering page for the Trent and Mersey Canal in South Derbyshire:
<https://canalrivertrust.org.uk/volunteer/opportunities/OPP0004599-towpath-taskforce-south-derbyshire>
- And find your nearest canal for recreation:
<https://canalrivertrust.org.uk/local-to-you>

Retrofit Conference

The conference was a joint project between the District Council, County Council and other partners, focusing on retro-fitting energy efficiency measures to existing homes. The event was staged to provide knowledge-sharing to help businesses understand the future need for retrofitting of houses, through sharing solutions, best practice and understanding how retrofitting will reduce emissions and help the district to become carbon neutral.

Covid Recovery Plans

The Derbyshire Economic Partnership and the D2N2 Local Enterprise Partnership are both currently preparing and consulting on new strategies, encompassing Covid responses measures to support businesses and the workforce.

Any action required of Partners i.e. attendance or promotion of an event.

To raise awareness of the initiatives highlighted above and make referrals, including:

- Environmental volunteering
- Wildlife recording
- Labour market guide
- Work Club at the Old Post Centre
- Kickstart
- Skills Support for the Workforce
- South Derbyshire Business Advice Service
- Canal & River Trust volunteering





CHILDREN & YOUNG PEOPLE

Highlight summary of progress against priorities in the Sustainable Communities Strategy.

The South Derbyshire key priorities, linked into the Derbyshire Childrens partnership and a summary of the last three months is highlighted below:

Summary

Progress has been slow over the last quarter on the Locality Childrens partnership action plan due to the COVID-19 situation and the priority for children services to support our most vulnerable families. The action plan focuses on two areas, **Emotional health and wellbeing** and **Target family support and school readiness**. Along with a focus on the **delivery of early help and the school transition, this continues to be progressed** – though the last Locality Childrens partnership (LCP) invited partners to share their COVID-19 support plan and explore a community approach to helping families.

It must be noted that the priorities may change with need over the next 3 months, we are currently looking at **COVID recovery for children and young people** as an additional focus and the impact of children being out of education for 5 months.

The LCP (locality children partnership) was in July and September 2020 and both held virtually, there was an excellent engagement from all aspects of the community and the meeting was well attended. Support was shared to ensure that we supported the most vulnerable families and, also each service was able to share how they were continuing to support the community during the pandemic. The September event explored the school return and any early themes and difficulty to ensure that we can support schools and families in their return to education.

The LCP email group shared access to support services, available resources and a monthly newsletter (developed by the transition team) that showed what resources were available in the South Derbyshire and South Dales community for all to access.

Early help and social workers during COVID 19

The social work and early help teams have continued to engage families furring lockdown, as key workers they have focussed on direct visits and support to the most vulnerable families, but also virtual support for all our cases open.

During lockdown any cases open to social care or early help received either a direct visit or virtual visit/contact every 10 days (some more regular depending on needs).





Schools also provided a virtual contact to families and the most vulnerable children were encouraged to attend education and take up their place in accordance with government guidance. School and social care worked together to encourage attendance of all children subject to Child protection or child in need plans.

Each child open to social care or early help were provided with a laptop and internet access so they could continue access to their education and learn online during the pandemic (these were provided for every child by the government and distributed by children services and families/children can keep these). It did take some time for these to be distributed, but now they are in place, any future lockdowns from school and be better managed.

Many workers from social care and early help have worked from home since 31st March 2020 and continue to do so. They have completed face to face visits to our most vulnerable and have been provided with the required protective clothing to do this. The current guidance for Derbyshire Childrens services is to 'work at home if you can', though I would note that workers are within the community, just not using an office space - we currently have health and safety and are exploring future ways of working for when we return to the office, though this is not envisaged to be prior to 15th October 2020 as buildings are reviewed under health and safety and made COVID safe.

We have found that working from home has been very successful, and a future of working at home and having office time may be a way forward to provide a work life balance for our social work and early help teams, the pandemic has allowed us to explore alternative ways of working and I am confident that we have supported families to a high standard since lockdown.

The local lockdowns may become a challenge for worker capacity with the example in Leicester due to the number of workers we have living in that area, so this will be monitored to ensure that we can continue to deliver a service to our families.

We currently have the Swadlincote building at rink house open, along with The Elms contact and family time centre, there are plans to explore the health and safety of the 'children centre' and the 'Youth centre' (but at this time they remain closed) though I would note that a number of the session supporting families from these centres have been running virtually – such as the 'little learners programme', which supports school readiness.

Good attendance has been continued for the virtual 'Locality Childrens Partnership (LCP)' since lockdown we had an increased involvement of school as they begin to deliver their early help provision and it is noted the stronger relationship with schools as we come together to access supporting during Covid-19.





The New DCC Early Help Provision has continued to develop, despite lockdown, this includes a vulnerable young person's meeting, which is a gate way meeting for referrals received though starting point from partner agencies, it involves discussion around provision and resources to ensure a family received the best support from the correct service.

These have all continued virtually during the lockdown period and the attendance levels for professional has been very good – the virtual modal may be something we consider for future meetings as they worked so well.

The youth offer is also is under review, though has been on hold during lockdown, we are exploring focussed groups and a plan to deliver support within existing voluntarily groups to ensure we target the young people that require support. We have retained one DCC 'mini mobile youth activity bus' at Woodville youth centre and are exploring a mobile provision around this to target community needs in South Derbyshire.

The Youth grant has also been extended for 6 months so access to this funding is continues for voluntarily groups.

The early help and transition team set up Practice Guidance Sessions which aim to provide an opportunity to learn good practice from colleagues in the delivery of Early Help Case Work across schools in South Derbyshire and Dales. Some of these sessions went ahead, though others were affected by Lockdown – these plan to resume in September when schools return from the summer break. With a focus on, Sharing Good Case Work Practice, Reflective Case Work Practice and Solution Focus Interventions.

The performance data and figures within the social work and early help teams has been a high standard during lockdown, with increased visits, focussed care plan and targeted support where it has been needed most – the COVID-19 situation has bought together multi-agency working like never seen before and this has been a significant benefit to families.

The action plan continues to focus on two areas, **Emotional health and wellbeing** and **Target family support and school readiness**.

Though a further target will look at the **delivery of early help and the school transition to this modal**.

Targeted family support including 0-5 and school readiness

****Progress Impacted by COVID 19 – though virtual delivery has progressed well**

- **Incredible years** - Identification of individuals trained to deliver the 2-8 and 8-13 Programme will enable us to increase the number of sessions being delivered in the locality and identify any training gaps in the locality.





- Continued **universal contact with babies, children and families**, which will highlight the message ready for school 'golden thread continuum' 0-5yrs, children centres are working in partnership with health, to ensure that children entering school are ready to access education.
- The **10 keys of School Readiness** were identified by Derbyshire parents, carers, professionals and through the South Derbyshire Locality Childrens Partnership as an area of need. The keys are designed to help everyone understand what children developing typically for their age, should be able to do by the time they start in reception class. The Little Learners group will offer weekly activities and strategies to help parents engage their child in play to aid their learning and development. Support from Foundation Years Practitioners will ensure parents/carers are confident supporting children to be ready for school and having fun together while learning. Feedback from children and parents has been really positive and the staff team have developed new and creative skills in the virtual world too.
- Work is ongoing to promote **Nursery Education take up – 2yr's** increase for eligible families, Direct Contact with families in the first year is seen to be crucial for appropriate brain development, with focus on 'Understanding the needs of your child' group' for targeted families at the children's centre.
- **Incredible Years Parenting Programme** has been a continuing success with multi agency teams and schools working together with families delivering targeted parenting support prior to lockdown. This parenting programme is delivered into two areas, 8-13 and 2-8 with equal demand for both courses. We are currently establishing the trainers we have across South Derbyshire within schools. It is hoped that promotion of group work and multi-agency working will be continued within the new early help modal.
- While there is promotion of the two lead themes above, the partnership continues to explore **Children at risk of CSE** within Derbyshire children services promoting a monthly meeting around supporting vulnerable children, the children at risk of exploitation meeting (CRE) sharing local knowledge around risks and themes, with information highlighting our most at risk young people through police tasking and tactical missing persons meetings. These have continued during lockdown with virtual information sharing and targeted support for the CRE young people in South Derbyshire. As a result of this we now have a better grasp on our children at high, medium and low risk of CRE, at this time we have no High-risk young people within South Derbyshire and South Dales.
- The focus within the **LCP** has been **COVID response** and recovery and it is envisaged that in September this will continue to be our focus again as the schools return.





Issues that the Partnership could add value to (time will be given at the Board meeting for partner input/solutions to each theme group).

- We are seeing improved attendance within the partnership which is very positive and strengthening the provision of early help.
- Reminder to the group about the youth grants, which are still available to our voluntary groups and extended for a further 6 months.
- SCC would be happy to present to the partnership the New early help offer and threshold document in future meetings

Any action required of Partners i.e. attendance or promotion of an event.

- Locality Childrens partnership
- Youth grants





1.0 Recommendations

1.1 To note the current financial position of the Partnership.

2.0 Purpose of Report

2.1 The District Council acts as accountable body for the South Derbyshire Partnership. This report provides an overview of the Partnership's current financial position.

3.0 Detail

2020/21 Distribution of Funds

3.1 Grant awards have been made during the year as follows:

2020/21	£
Income	
Balance from previous years (including £500 from AVBC ring-fenced for a joint Sustainable Development Group project – Labour Market Guide)	4,612.50
Accounting adjustment from 2019/20	4.75
Underspend from Community Awards 2019/20	1,526.80
SDDC contribution for 2019/20	10,000.00
TOTAL INCOME	16,144.05
Expenditure	
• Projects:	
Work Club (Old Post Regeneration Association) (*Plus £3,500 DCC)	1,500.00
South Derbyshire Environmental Forum (Environmental Education Project)	2,000.00
Building Social Capital in Newhall and the urban core (South Derbyshire CVS)	4,142.00





Labour Market Guide (Skills and Employment Group)	1,078.00
TOTAL EXPENDITURE	8,720.00
BALANCE	7,424.05

**Matched by Derbyshire County Council - Public Health Locality funding*

3.2 A number of the projects supported by the Partnership also attract match funding contributions from other public, private and voluntary/community sources, in particular Public Health Locality funding from Derbyshire County Council. This includes the support for the Work Club project.

4.0 Financial Implications

4.1 The Partnership currently has a positive balance of £7,424.05.

5.0 Conclusions

5.1 The Partnership is able to directly and indirectly influence significant expenditure taking place in the District, through its own budget and the match funding this attracts and, in particular, through the involvement of the Theme Groups in allocating resources and influencing organisations' activities in the local area.

Contact: Mike Roylance, South Derbyshire District Council
 Tel. (01283) 595725
 Email. mike.roylance@southderbyshire.gov.uk

