

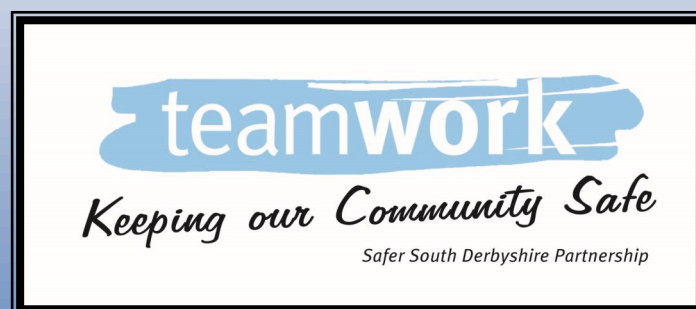


# Safer South Derbyshire Partnership

## Partnership Plan 2014-2017

(2016 Refresh)

**‘To work together to provide the people of South Derbyshire with a  
community in which it is safe to live, work, play and visit’**



## Contents

Foreword	3
South Derbyshire District	4
The Partnership	5
Accountability & Structure	6
Performance	9
Initiatives	10
Strategic Threat and Risk	11
Priorities	12
Contacts	13

If you would like this document in another language, or if you require the services of an interpreter, please contact us. This information is also available in large print, Braille or audio format upon request.

Phone: 01283 595795

E-mail: [customer.services@south-derbys.gov.uk](mailto:customer.services@south-derbys.gov.uk)



## Foreword

Welcome to the new Community Safety Partnership Plan 2014-2017. This plan highlights the priorities that our communities and partners have identified as most important for us to focus on over the next three years. It provides information on how the partnership has performed over the last three years and gives an insight into the structure of Community Safety Partnership working in Derbyshire and South Derbyshire.

This plan shows some of the key objectives we will be working towards which will help us to deliver our vision and how the partnership will work together to reaffirm our commitment to making South Derbyshire a safe place in which to live, work, play and visit.

This plan sets out our commitment to address the broader challenges and opportunities facing community safety over the next few years.

Everyone has the right to feel safe and all of us have a part to play in making South Derbyshire safer. Increased community safety is achieved through joint effort and that means local organisations, communities and individuals pulling together.

This partnership working happens in many ways. Every time you see the Safer South Derbyshire Partnership logo, it is a reminder

that local people are working together to combat crime and disorder.

We will do everything in our power to reduce crime, the fear of crime, and to communicate our work to our many communities. We are confident that we can build on the strong foundations that have been established and continue to reduce crime and disorder in South Derbyshire.

Over the next three years there will be many challenges, not only as individual organisations but as a partnership. We will need to find leaner, more effective ways of working to achieve our vision and this will be difficult. This plan, however, confirms that all of the organisations within this partnership are committed to finding these solutions, and that the best way to do this is together.



*Chairman of the Safer South Derbyshire Partnership, Councillor Bob Wheeler*

## South Derbyshire District

South Derbyshire is a rural district in central England covering an area of more than 112 square miles. It adjoins and is heavily influenced by the city of Derby to the north, Burton upon Trent to the west and Ashby-de-la-Zouch to the east. The town of Swadlincote, in the south of the district, is the main urban centre with a population of around 35,000.

For many years the district has been the fastest growing in Derbyshire and is currently one of the fastest growing areas in England. Official forecasts anticipate the population increasing from the current 98,400 to more than 123,000 by 2035. The population is also becoming older and more diverse with implications for the types of housing, facilities and support services that will be needed in the future.

The district as a whole enjoys relative prosperity, with low levels of unemployment, although a dichotomy of economic problems does exist across the district. However, the situation has generally improved over the past two decades as a result of successful regeneration initiatives.

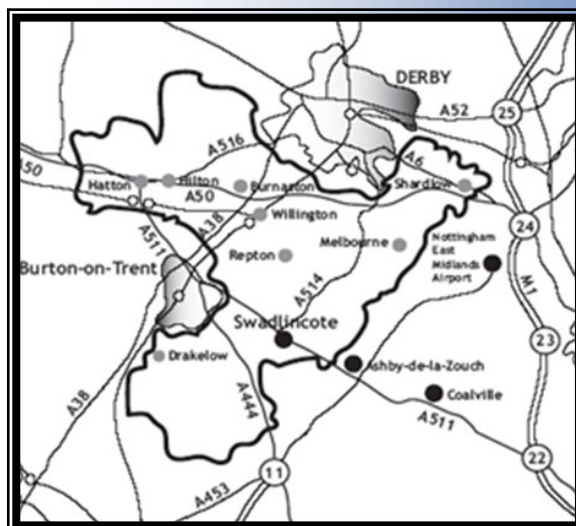
The local workforce is largely low-skilled and the proportion with no qualifications is above average. The presence of further education institutions in Derby, Burton upon Trent and, more recently, in Swadlincote may present an opportunity to address this.

A relatively large proportion of the workforce is employed in manufacturing. Major companies that have been attracted to the area include Toyota, JCB Power Systems Ltd & Nestle UK Ltd.

The Local Plan is currently in consultation and should that be approved it could result in up to an additional 12,500 houses being built in the district by 2028.

The 2014 Health Profile of South Derbyshire states that deprivation is lower than average, but about 2,400 children live in poverty. Violent crime, drug misuse, hospital stays for alcohol related harm all appear better than the England average. However, road injuries and GCSE attainment is worse than the average for England.

There are significant inequalities within South Derbyshire by gender, level of deprivation and ethnicity. For example, men in the least deprived areas of South Derbyshire can expect to live almost 10 years longer than those in the most deprived areas (With women there is a six year difference).





# The Safer South Derbyshire Partnership

The Safer South Derbyshire Partnership is the local Community Safety Partnership (CSP) for South Derbyshire. It is a statutory partnership that was formed as part of the Crime and Disorder Act in 1998.

Much has been achieved in the past three years, as is detailed later, and this new Partnership Plan provides us with a clear framework to monitor and evaluate our progress towards tackling crime and providing protection and reassurance in the communities of South Derbyshire.

The delivery of this plan will require the enthusiastic and committed support of both the Safer South Derbyshire Partnership and the South Derbyshire community as a whole.

The role of the Safer South Derbyshire Partnership Support Team is to facilitate the partnership, including the safer neighbourhoods meetings and the local multi agency partnership meetings and to lead on delivering the projects and schemes that are detailed in the strategy section of this document.



The support team consists of:

- Communities Manager
- Community Safety Officer
- Anti-Social Behaviour Officer
- Community Engagement Officer
- Community Partnership Officer

The key organisations and statutory partners of the SSDP are:

- South Derbyshire District Council
- Derbyshire Constabulary
- Derbyshire County Council
- Derbyshire Fire and Rescue
- Derbyshire NHS
- Derbyshire Probation
- South Derbyshire CVS (non-statutory)

The partnership also works closely with other organisations and community groups that can assist in delivering local priorities. These include, but are not limited to voluntary, community and social enterprise groups, housing associations and local businesses.

Our close working relationship with CVS and our successful Neighbourhood Watch, Pub Watch and Business Watch schemes demonstrate our commitment to working with local voluntary and community groups.

The partnership would not be functional without local residents. Without their engagement in the community safety agenda, the work of the partnership is limited in its effectiveness and approach.

# Accountability & Structure

There are a number of other partnerships and strategies that link into the work of the Safer South Derbyshire Partnership and provide accountability for the work of the partnership.

## **Derbyshire Police & Crime Commissioner (PCC)**

The partnership plan works to compliment the Police and Crime Plan 2012-2017 prepared by the PCC. The PCC replaced the Police Authority under the Police Reform & Social Responsibility Act 2011 and the first commissioner was elected in November 2012. A new Police and Crime Commissioner was elected in May 2016.

The PCC role is designed to hold the police force to account and to bring communities and the police closer together, and includes the work of the Community Safety Partnerships across Derbyshire. The PCC now holds the community safety funding previously allocated by the Home Office, as well as the police budget. For more information, please see: [www.derbyshire-pcc.gov.uk](http://www.derbyshire-pcc.gov.uk)

The Police and Crime Plan will set out the Derbyshire Police priorities for the duration of the PCC's term in office. The Police and Crime Plan may be refreshed annually or changed at the PCC's discretion. The Commissioner will hold the Chief Constable to account for delivering the plan efficiently and effectively.

## **Derbyshire Partnership Forum (DPF)**

The DPF is the over-arching partnership that has strategic responsibility for Derbyshire.

There are a number of thematic partnerships reporting into the DPF structure. These are:

- Safer Communities Board
- Health and Wellbeing Board
- Culture Derbyshire
- Derbyshire Economic Partnership

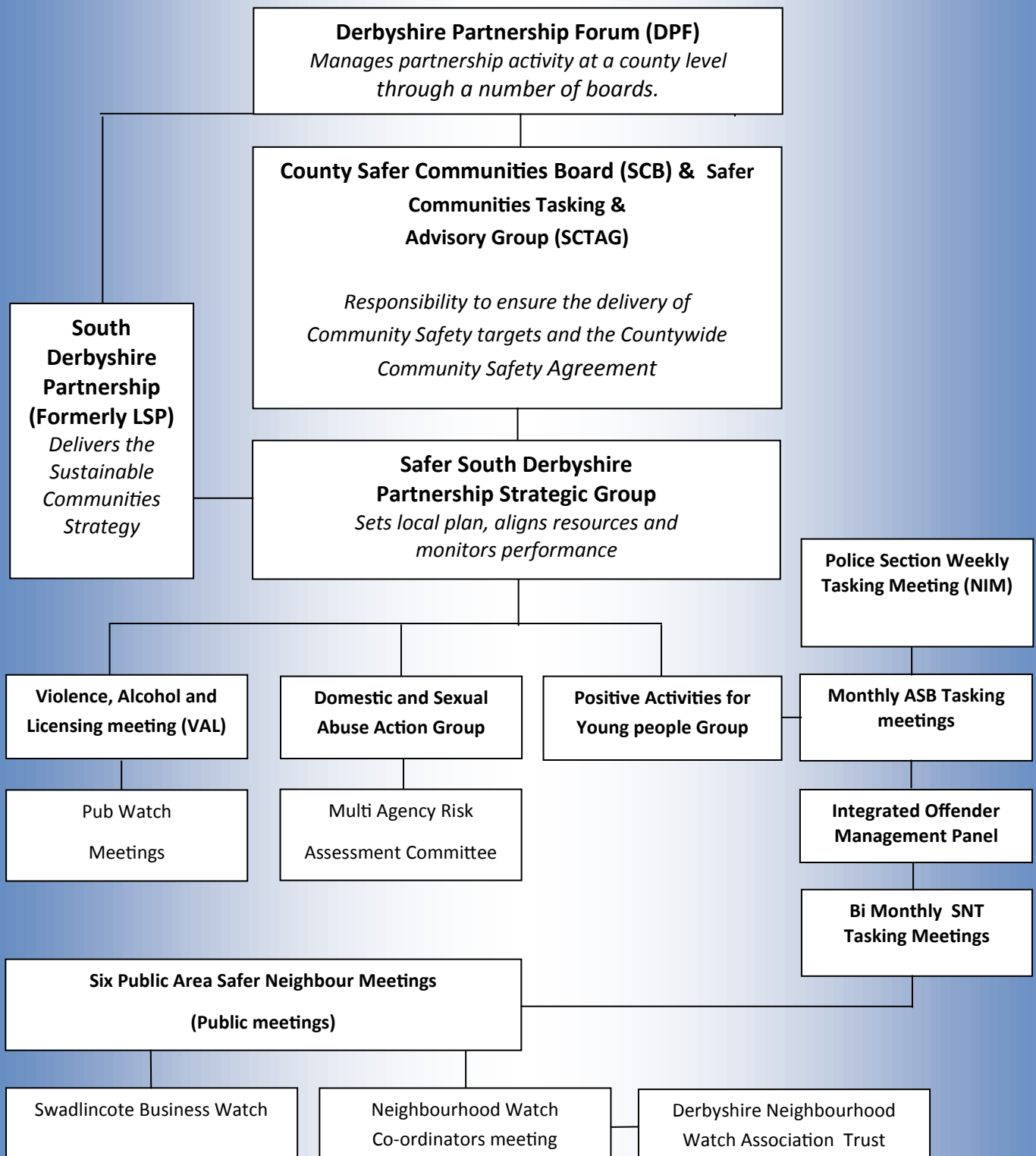
These are all priorities under the current Sustainable Community Strategy. For more information visit;  
[www.derbyshirepartnership.gov.uk](http://www.derbyshirepartnership.gov.uk)

## **Safer Communities Board (SCB)**

The role of the Safer Communities Board (SCB) is to give leadership and direction to tackle crime, anti-social behaviour and substance misuse across the county. The SCB is supported and advised by the Safer Communities Tasking and Advisory Group (SCTAG) which comprises senior officers from the partners represented on the board and from each of the CSPs in Derbyshire.

The priorities of the SCB are set out in the Derbyshire Community Safety Agreement 2014-2017 which is informed by the annual Derbyshire Strategic Threat & Risk Assessment .

## SSDP Meeting Structure



## Information Sharing

The Safer South Derbyshire Partnership is committed to working in partnership with its partner agencies who are involved in reducing crime and disorder and who provide a service to the public.

It is recognised that the exchange of relevant information between such bodies is fundamental to achieving an effective partnership.

The district council together with other key partners including the police, fire service and NHS have all signed up to the Countywide Community Safety Information Sharing Protocol. This sets out a framework for information sharing across the respective organisations.

An overarching county-wide protocol is also being developed through the Derbyshire Partnership Forum

This protocol commits the partner organisations to draw up local information sharing agreements to meet specific business needs in an agreed format.



## Performance Management

In order to ensure that the partnership is making sufficient progress towards the objectives set out in this document it needs to be subjected to regular performance monitoring.

The partnership will be monitored at a local and countywide level. The Safer South Derbyshire Partnership holds regular Strategic Group meetings, which analyse performance against targets, progress towards delivering the action plans and receives update reports from local action groups. The strategic meeting is held once a quarter and is attended by representatives from all statutory and key partners.

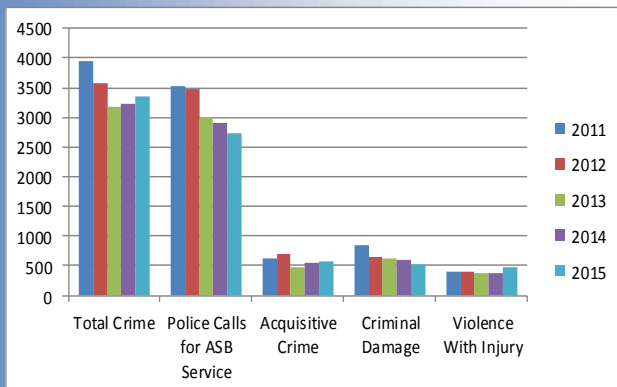
The partners involved in the local action groups will ensure that the action plans are delivered against in order to meet the priorities of the partnership. These actions are driven by the local data, weekly police tasking and by listening and learning from our communities. The partnership believes this is a key stage in the setting and reviewing of actions and features in day-to-day work.

County-wide performance is monitored through the SCB and SCTAG groups. Each partnership is monitored on its performance towards key performance indicators and is tasked with giving regular updates on progress made towards county-wide initiatives and what action will be taken to address poor performance.



## Performance

Between 2011 and 2013 there was a year - on-year decrease in total crime in South Derbyshire. During 2014 there was a small increase in total crime, with 2015 seeing a further increase, equating to an additional 132 offences.

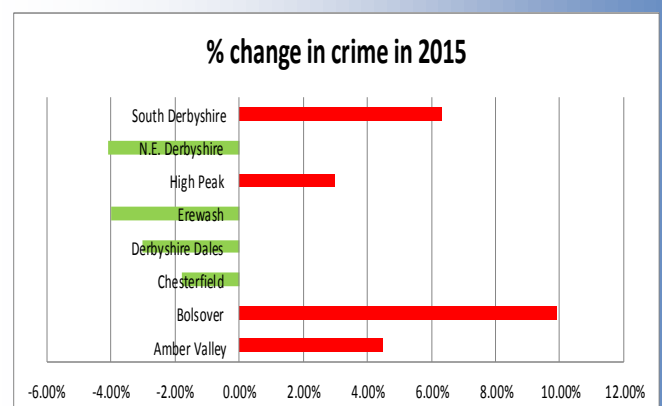


Anti-social behaviour saw a decrease of 171 incidents (5%) following a number of initiatives aimed at implementing new powers and tools.

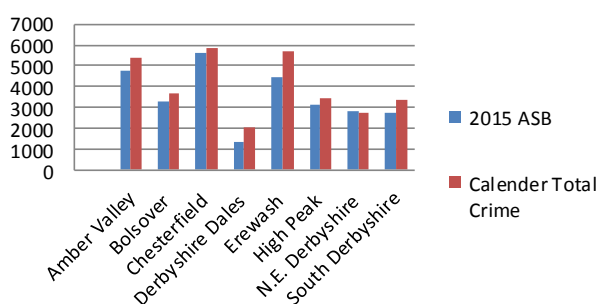
Criminal damage in the district also saw a significant reduction of 69 incidents (11%) however violence with injury saw a sharp increase from 368 offences to 472.

A number of these offences were related to domestic violence which could be argued indicated a more positive environment in which victims felt more able to come forward. Acquisitive crime (theft from and of a vehicle, dwelling burglary and robbery of a person) increased by 41 incidents during 2015.

When broken down further it can be seen that theft from vehicle saw an increase of seven incidents (2.4 %), while robbery decreased by five incidents (22.7%). Domestic burglary increased by 35 incidents (22.7%) while theft from vehicles increased by seven incidents (2.4%).



### Crime and ASB in Derbys 2015



When compared with other districts in the county, volume crime rates and calls for service in South Derbyshire in 2015 remain among the lowest in the county.

Only Derbyshire Dales had fewer ASB calls for service and only Derbyshire Dales and North East Derbyshire had fewer incidents of crime.

## Initiatives

The partnership continues to work with partners and the community to offer a diverse range of crime reduction and educational activities and public engagement events. During the past year as a partnership we have:

### Anti Social Behaviour

- Provided practical training on the new ASB Tools and Powers in February which was attended by 50 local partners.
- 13 ABC Contracts signed between April and Sept 2015. Seven successfully completed during the same period .
- ‘Prison me no way’ events took place in all four Secondary schools .
- New £50,000 Skate park installed at Newhall Park. A sum of £17,000 was obtained by SSDP towards the park from the Police and Crime Commissioner.
- 100 + young people attend Friday Night Project every week. More than 1,400 young people attended the 37 summer play scheme sessions held in Swadlincote and Newhall Parks during the summer of 2015.
- One Criminal Behaviour Order successfully obtained on an ASB offender causing issues in the town centre.

### Alcohol related harm

- The Dove Valley Pub Watch scheme has been extended to include pubs from Willington and Repton.
- Seven offenders issued with Pub Watch Banning Orders in the Swadlincote area for offences including assault and damage.
- Bi monthly Violence, Alcohol and Licensing meetings held looking at problematic premises.

### Acquisitive Crime

- Held nine security number plate operations across the district with more than 300 cars secured.
- Secured 400 properties through the CVS run Safer Homes Scheme.
- Farm Watch packs distributed to Farms, the packs included Selecta DNA Property marking kits, advice leaflets, stickers and signage.
- No Cold Calling scheme set up in Linton.
- Church Watch signs and information packs sent out to churches as part of the Church Watch scheme.

### Domestic Abuse

- Held third International Women’s Day event in South Derbyshire promoting local agencies and services to 80 attendees.
- Held White Ribbon campaign in Swadlincote town centre with more than 100 people signing the pledge against violence to women.
- Secured the properties of 78 victims through the CVS-run Sanctuary Scheme.
- Held candle lit vigil at Swadlincote Town Hall as part of a county campaign.

### Community Engagement

- Funded 14 Local Safer Neighbourhood Projects including CCTV schemes, lighting and youth activities.
- Purchased high visibility items such as snap bands and smiley stickers for children’s bags. These were given out by PCSO’s at Primary schools and by the Sports and Health team at schools as part of the Bikeability initiative.
- Hosted 13th annual Liberation Day event more than 350 attendees.
- Held three ‘Your Choice’ events at the secondary schools with guest speakers providing thought provoking and inspirational talks to the students.

# Strategic Threat and Risk

Nationally there is a new approach to crime that involves a shift of power from central Government to local communities.

MORI Surveys, our local Citizen Panel Surveys, the Police Have Your Say Survey and feedback from community forums, alongside identified national issues have informed the priorities for the Community Safety Agreement 2014 -17.

Locally, in partnership with the Police and Derby's City and Neighbourhood Partnership, Safer Derbyshire undertakes an annual joint threat and risk assessment. This assessment process identifies the priority areas in relation to crime and community safety for the partnership to focus on over the following 12 months.

A draft assessment highlighting 15 local priority areas was considered by partners in detail during October 2013 and initially scored in relation to threat and risk around each identified area. There was a joint agreement to focus on the top eight priorities moving forward due to reducing resources. However, anti-social behaviour, although not in the top eight, was deemed to be a priority for all Community Safety Partnerships across Derbyshire and as such has been included in the agreement.

In November 2015 countywide partners considered the identified priorities and re-scored them. Partners also considered new information relating to organised immigration crime, human trafficking and exploitation, which has now been included in the priorities to make a total of eight, the other priorities have not changed for 2016-17.

Below is a summary of the priority areas identified:

## **Priorities 2016-17**

- Anti-Social Behaviour
- Counter Terrorism
- Cyber-crime
- Domestic Abuse
- Organised Immigration Crime, Human Trafficking and Exploitation
- Organised Crime Groups
- Safeguarding Adults
- Safeguarding Children

## **Organised Immigration Crime, Human Trafficking and Exploitation**

In Derbyshire, Organised Immigration Crime, Human Trafficking and Exploitation (OICHTE) is evolving and it is clear that trafficking does not occur exclusively in urban areas. Human trafficking cases involve the movement of people into or within countries and regions that they are not familiar with. Many of the victims are unfamiliar with and often mistrusting of authorities e.g. police, partners.

A large amount of work is now planned to increase knowledge and awareness of OICHTE in Derbyshire. This includes the development of a county/city wide trafficking partnership, the development of training and awareness raising for professionals, bringing perpetrators to justice and the protection of the victim by reducing the risk of serious harm, building trust and confidence and protecting them from future victimisation. The structure of activities will be under the four Ps: Pursue, Prevent, Protect and Prepare.

## Local Priorities

Using the data and statistics in the 2014 Strategic Assessment, listening to our communities and by analysing the annual Derbyshire Strategic Threat & Risk Assessment, the partnership has identified the following areas as priorities for the next three years.

All of the priorities will be delivered in accordance with the overarching principles as set out in the Derbyshire Strategic Threat & Risk Assessment:

- Reducing crime
- Attacking criminality
- Providing reassurance
- Protecting the vulnerable
- Delivering value for money

### Anti Social Behaviour

- Work with partners to provide diversionary, education and engagement activities.
- Tackle incidents of ASB, to include focusing on hotspot areas, responding to community concerns and improving perceptions.
- Take enforcement action against perpetrators of ASB when necessary, to include voluntary and legislative measures.



### Domestic Abuse & Serious Sexual Violence

- Promote and work with local services to ensure victims are able to access security, advice and support.
- Raise awareness with professionals and communities through promotion campaigns, education and training.

### Communicating with the Public

- Understand the needs and concerns of local communities, and strive to address them.
- Build public confidence by actively engaging and communicating with different communities, partners and stakeholders.

### Protecting those most at risk

- Provide advice and security to those most vulnerable.
- Ensure roll out of ECINS system in South Derbyshire.
- Work closely with schools and youth groups to raise awareness, educate, inspire and protect children and younger adults.
- Provide awareness raising training on CSE, safeguarding, human trafficking & modern slavery.

### Alcohol related Harm & Substance Misuse

- Work with partner agencies and licenced premises to reduce alcohol-related crime, anti-social behaviour, and underage sales.
- Reduce alcohol and drug-related harm, through education and by promoting local services.

### Acquisitive Crime & Offender Management

- Work with partners and the community to maintain low levels of acquisitive crime through education and targeted intervention.
- Effectively manage offenders through the Integrated Offender Management scheme.



## Contact Us

For further information about this plan, or any aspect of community safety, please contact the partnership team.

### Address:

Communities Team  
South Derbyshire District Council  
Civic Way  
Swadlincote  
Derbyshire  
DE11 0AH

**Telephone:** 01283 595 924

### Email:

[community.safety@south-derbys.gov.uk](mailto:community.safety@south-derbys.gov.uk)

### Websites:

[www.south-derbys.gov.uk](http://www.south-derbys.gov.uk)  
[www.derbyshire.police.uk](http://www.derbyshire.police.uk)  
[www.police.uk](http://www.police.uk)  
[www.saferderbyshire.gov.uk](http://www.saferderbyshire.gov.uk)  
[www.southernderbyshireccg.nhs.uk](http://www.southernderbyshireccg.nhs.uk)  
[www.dlnrcrc.co.uk](http://www.dlnrcrc.co.uk)  
[www.derbyshire-fire-service.co.uk](http://www.derbyshire-fire-service.co.uk)  
[www.derbyshire-pcc.gov.uk](http://www.derbyshire-pcc.gov.uk)

