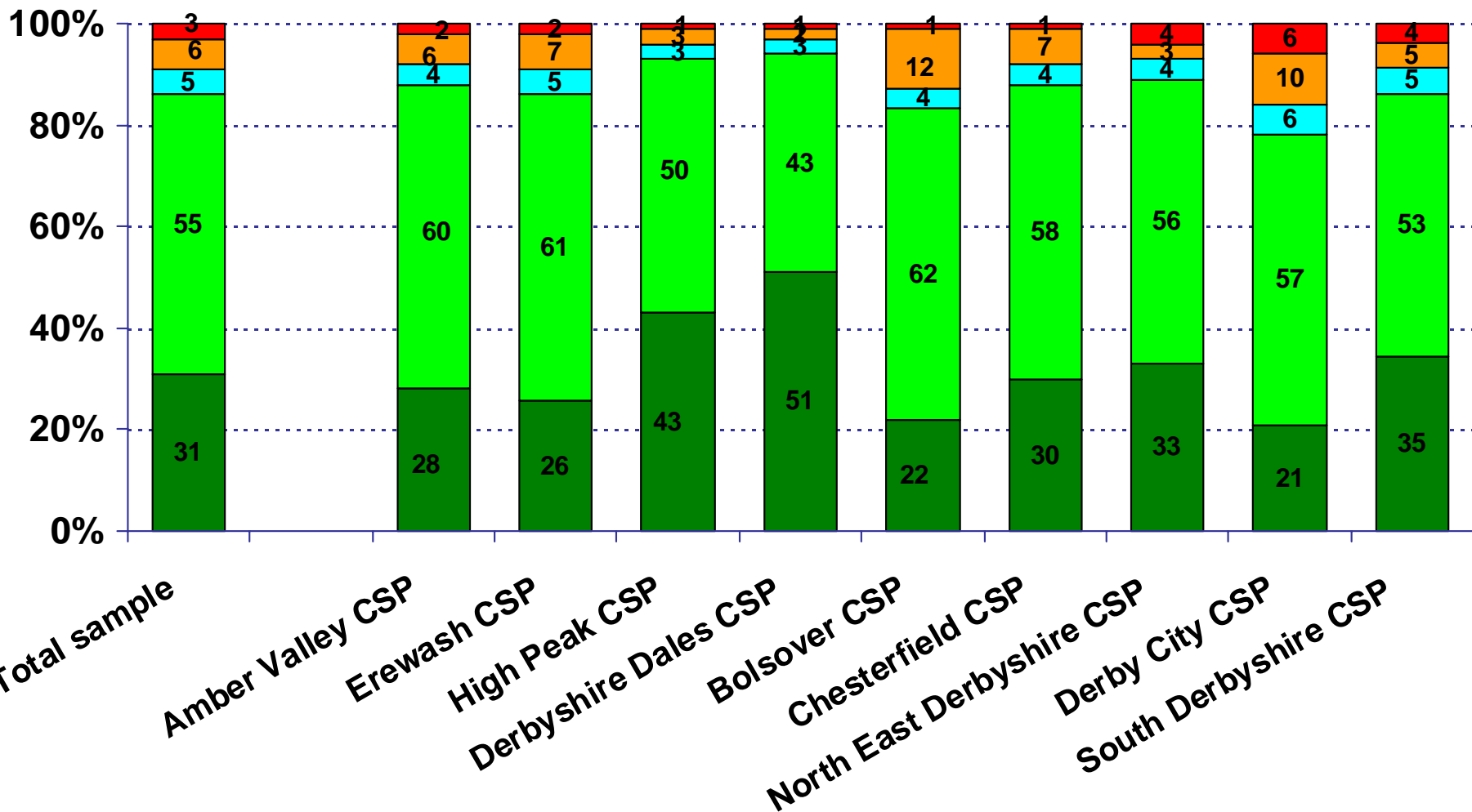


Q1. How safe do you feel in your neighbourhood? By Community Safety Partnership

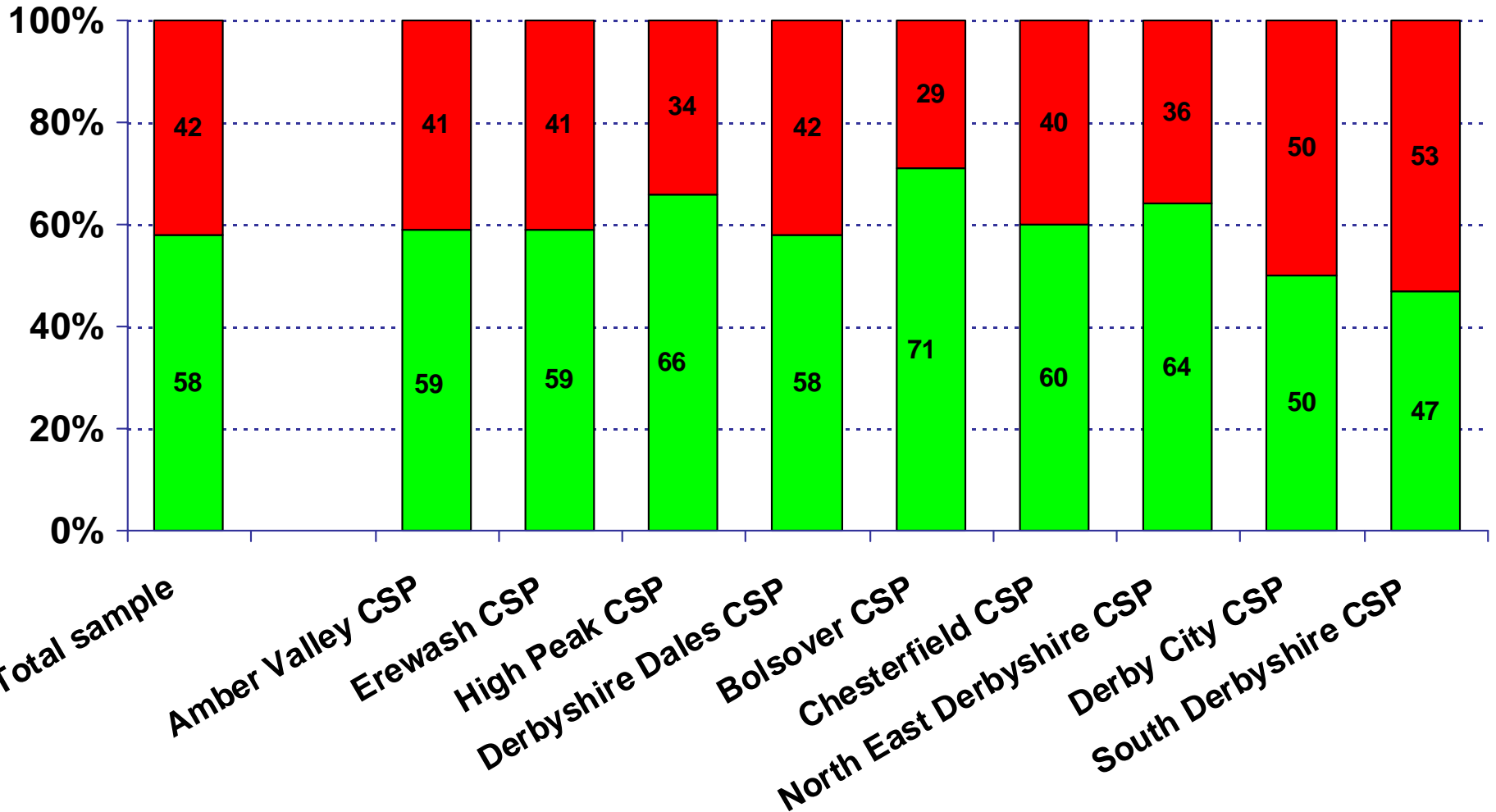
■ Very safe
 ■ Fairly safe
 ■ Neither safe nor unsafe
 ■ Fairly unsafe
 ■ Very unsafe



Q2. Before this event, did you know that you have a Safer Neighbourhood policing team in your area? By Community Safety Partnership

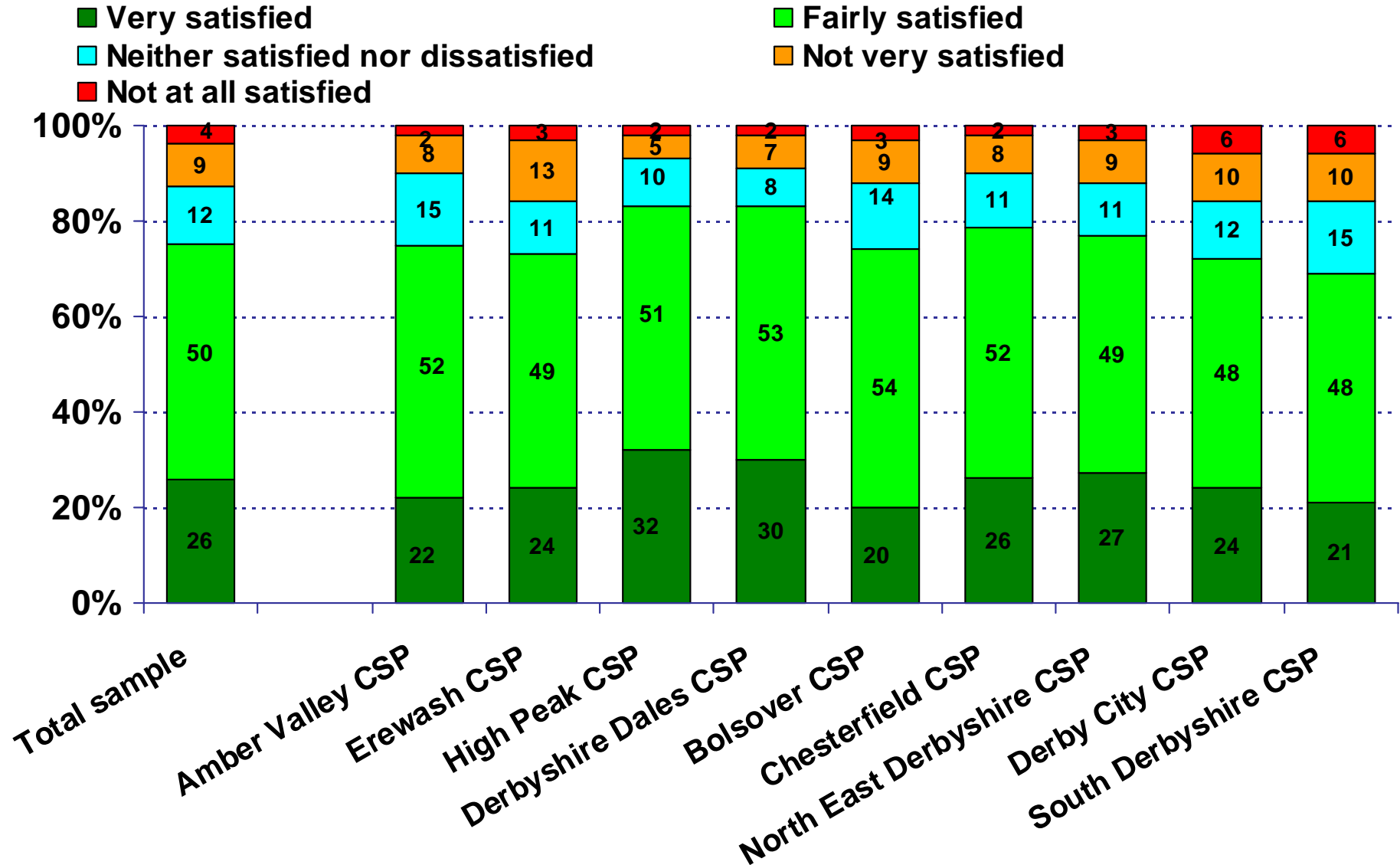
Yes

No



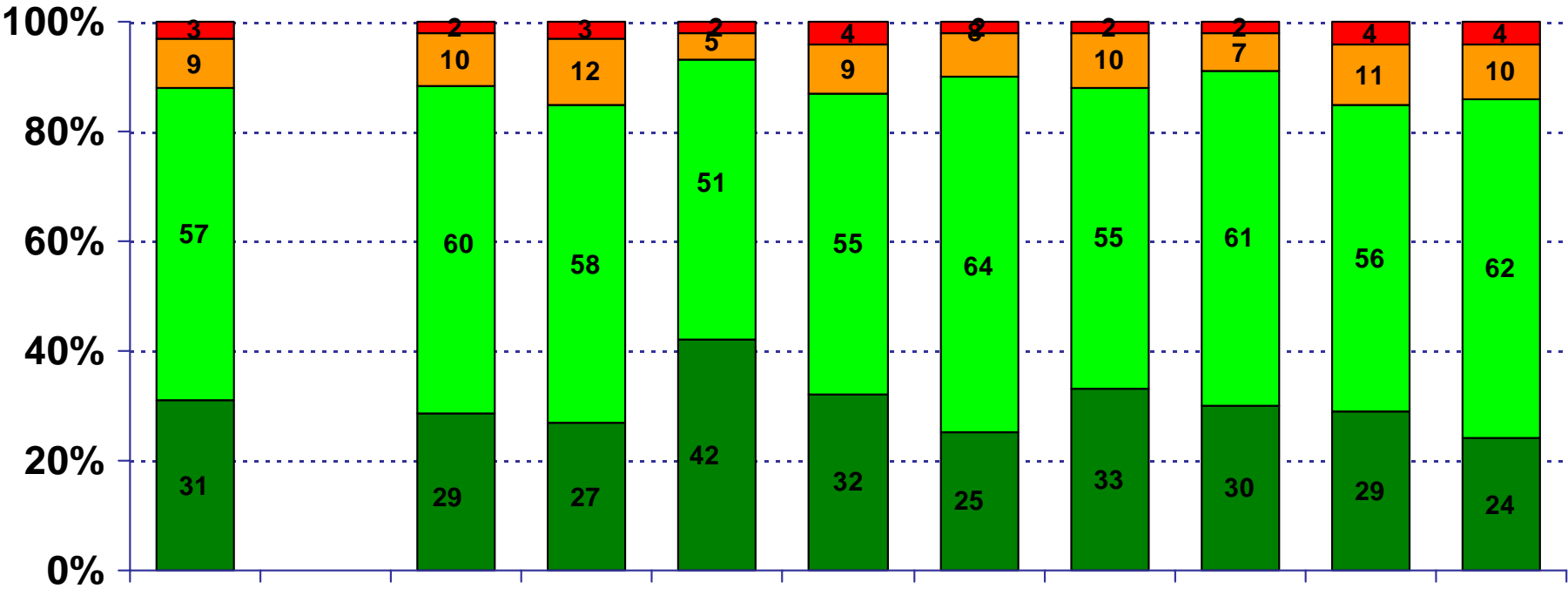
Q3. How satisfied or dissatisfied are you with how the police deal with crime and anti-social behaviour in your local area?

By Community Safety Partnership



Q4. How confident are you in general with the policing in your local area? By Community Safety Partnership

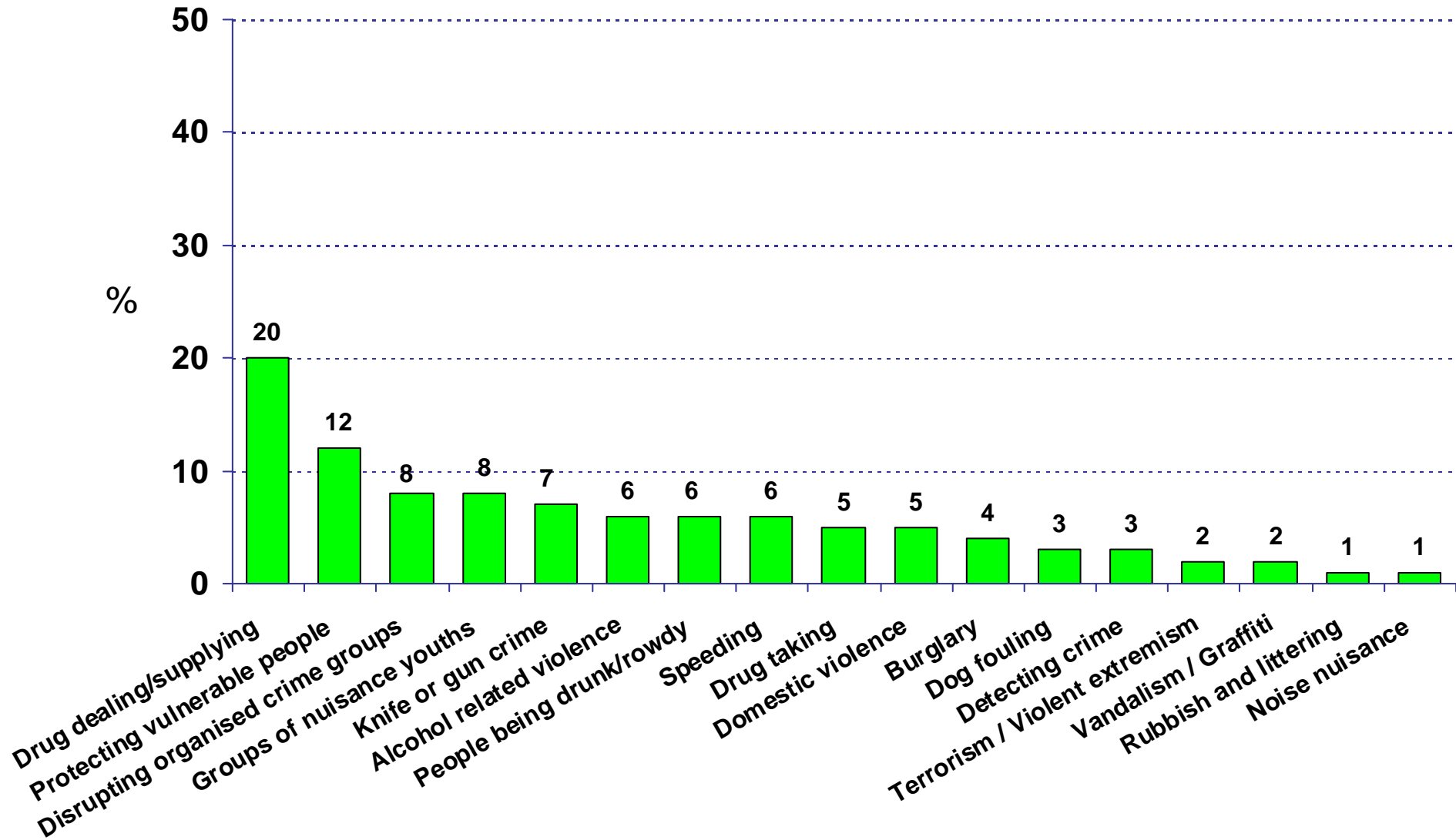
■ Very confident
 ■ Fairly confident
 ■ Not very confident
 ■ Not at all confident



Total sample
 Amber Valley CSP
 Erewash CSP
 High Peak CSP
 Derbyshire Dales CSP
 Bolsover CSP
 Chesterfield CSP
 North East Derbyshire CSP
 Derby City CSP
 South Derbyshire CSP

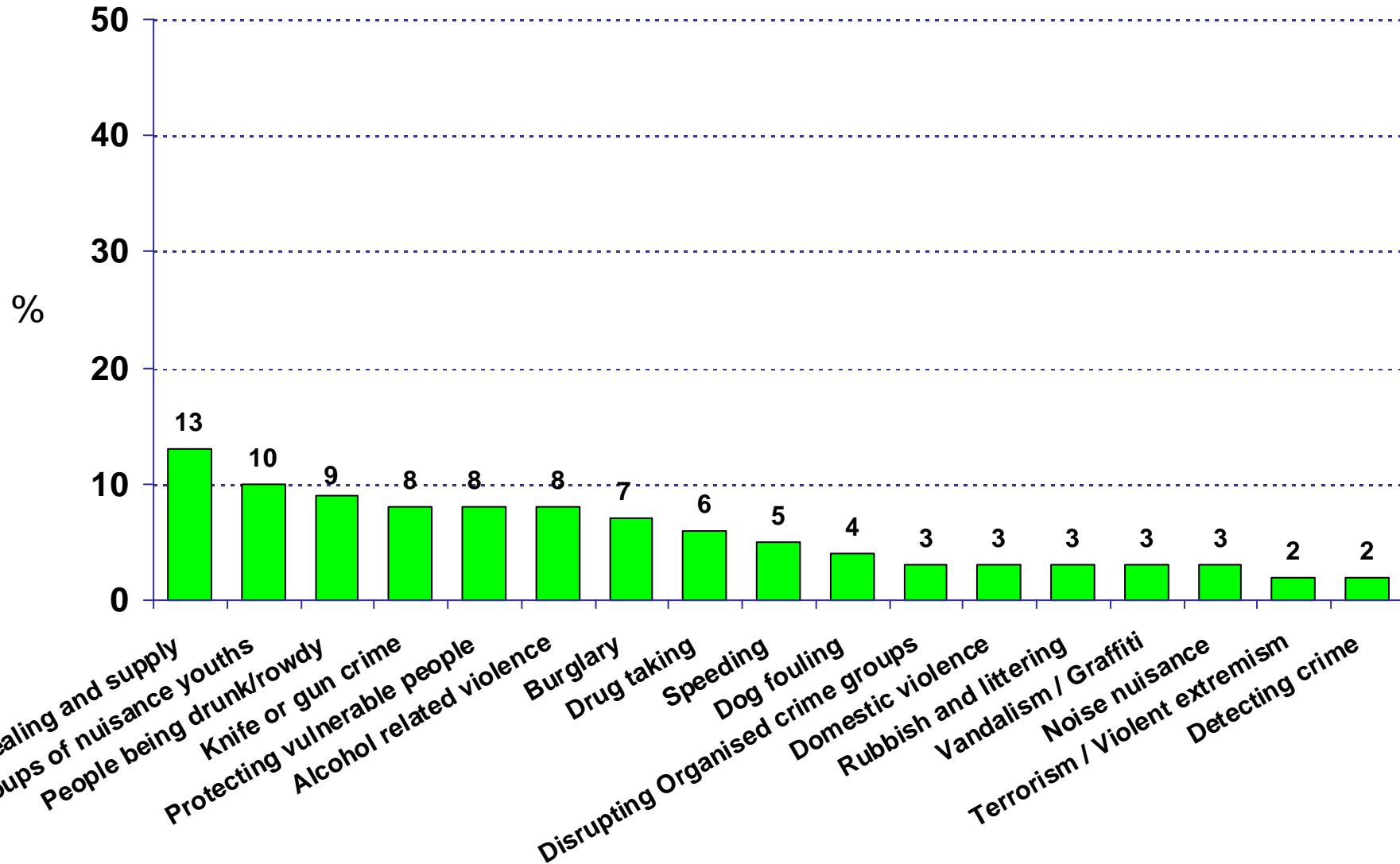
Q7. For us to gauge what is important to the community, please select your top three priorities from the list.

First priority



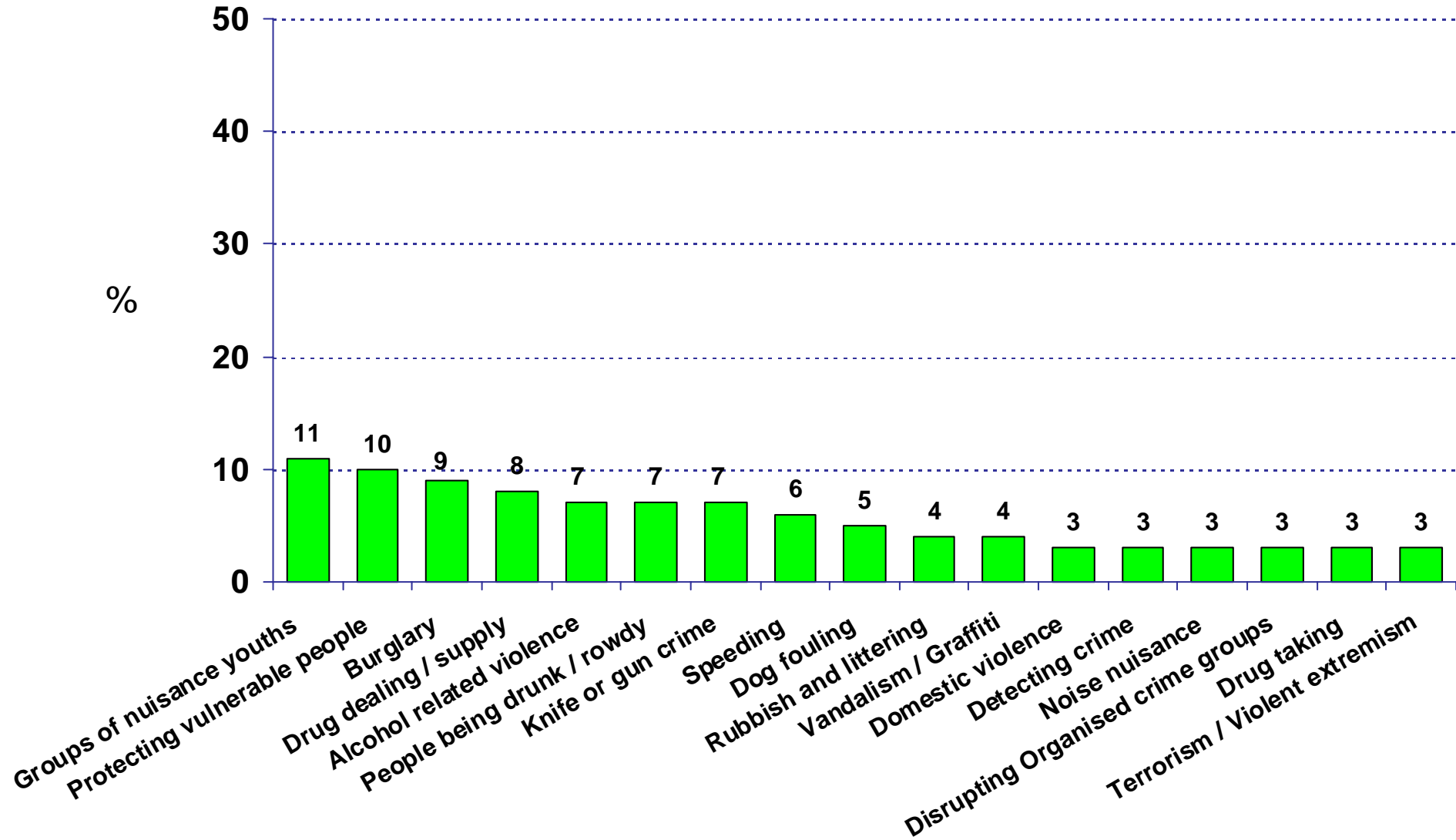
Q7. For us to gauge what is important to the community, please select your top three priorities from the list.

Second priority



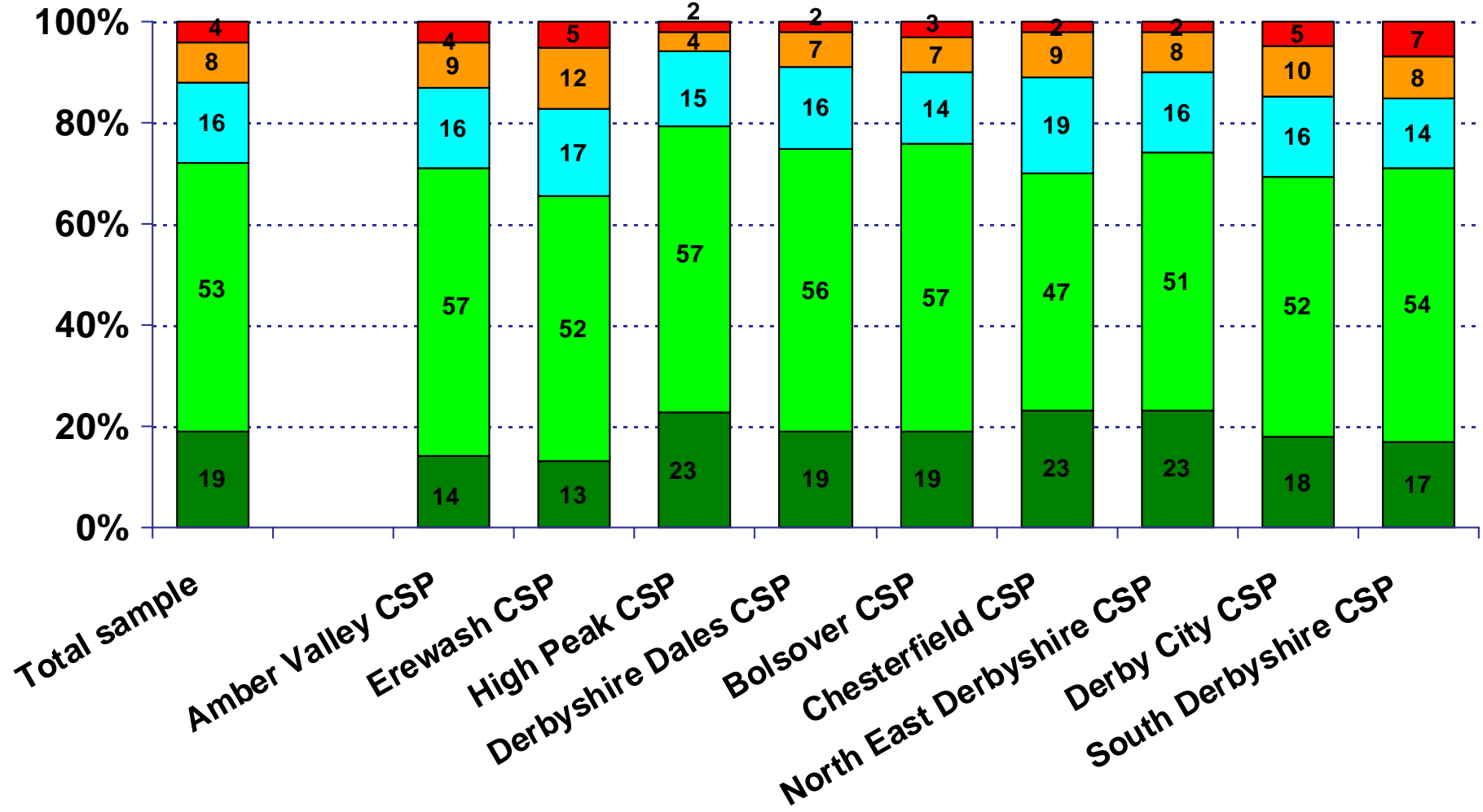
Q7. For us to gauge what is important to the community, please select your top three priorities from the list.

Third priority



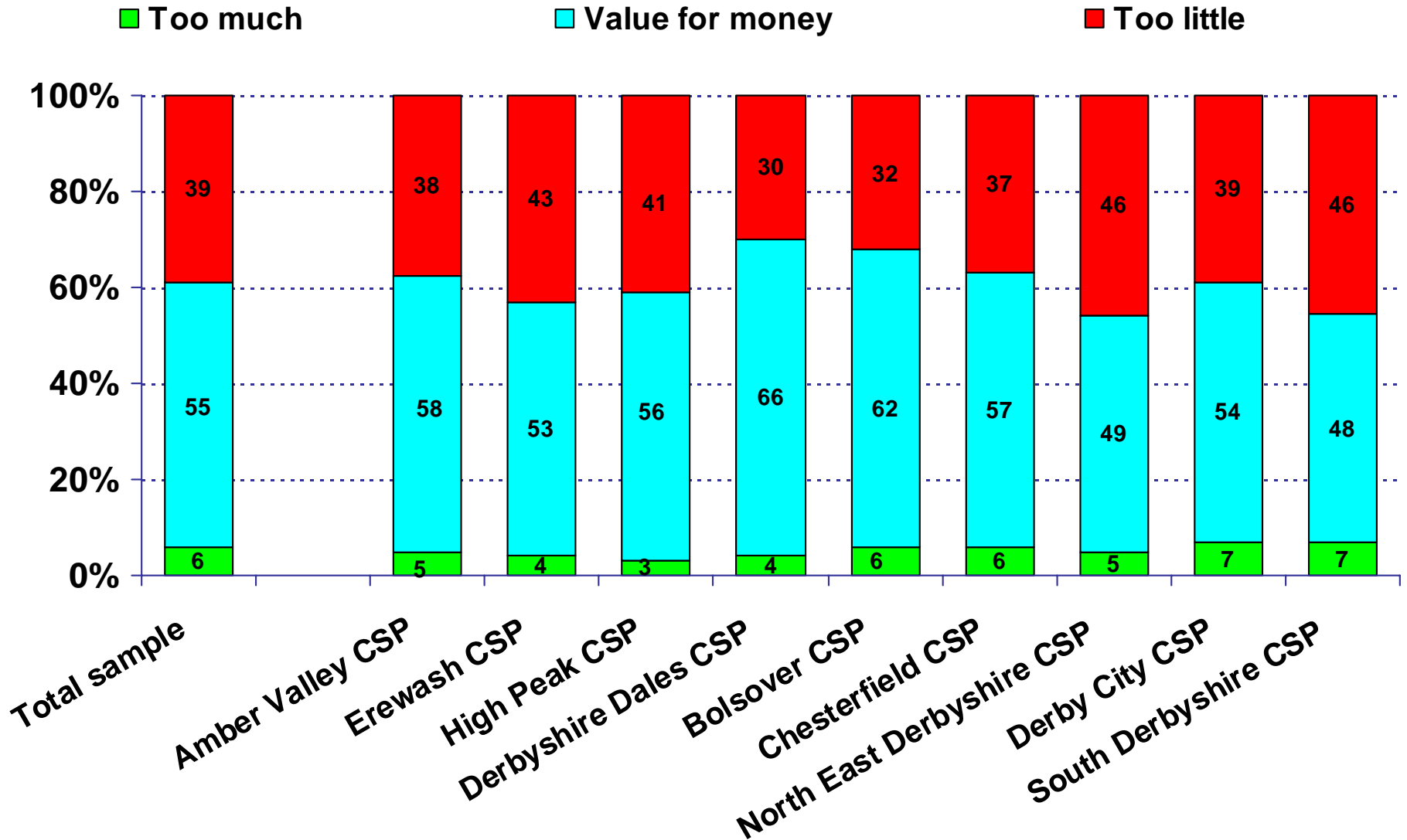
Q9. How much would you agree or disagree that the police and local council are dealing with the anti-social behaviour and crime issues that matter in this area? By Community Safety Partnership

■ Strongly agree
 ■ Tend to agree
 ■ Neither agree nor disagree
■ Tend to disagree
 ■ Strongly disagree



Q10. Nearly 80% of households in Derbyshire pay less than £3 a week through council tax for policing. Do you feel this is....?

By Community Safety Partnership



Q11. Gender of respondent By Community Safety Partnership

■ Male

■ Female

