

Safer South Derbyshire Partnership

Community Safety Partnership Plan
2017-2020



Contents

Introduction	3
A Growing District	4
Challenges	5
Derbyshire Partnerships	6
Risk & Threat	7
Recommended Action	8
Priorities	9
Performance	10
Review	11
Contacts	12

If you would like this document in another language, or if you require the services of an interpreter, please contact us. This information is also available in large print, braille or audio format upon request.

Phone: 01283 595795

E-mail: customer.services@south-derbys.gov.uk

Introduction

This is the Safer South Derbyshire Partnership (SSDP) Community Safety Partnership's Plan for the next three years 2017-2020. Although the plan runs for three years we know a lot can change in a year, and so this plan will be reviewed and refreshed annually. The purpose of this document is to let you know what the partnership is and what it intends to do to tackle crime and disorder and help individuals, families, businesses and other organisations to stay safer in South Derbyshire.

Keeping people safe is everyone's responsibility. Preventing and responding to crime isn't just a job for the police. What makes us feel safe and what makes our areas safe can't fall to one organisation and there are a huge number of residents and individuals within statutory services and voluntary organisations who are working hard on a daily basis to make South Derbyshire a safer place to be.

The Government recognised that community safety needed a group approach and in 1998 created Community Safety Partnerships which aim to bring agencies (and communities) together to reduce crime and improve public safety. Community Safety Partnerships (or CSPs) exist by law and some agencies are statutory members: police, council, clinical commissioning groups, Probation Services, community rehabilitation companies, fire and rescue services, and youth offending teams. Within South Derbyshire the local Council for Voluntary Services and the local Police and Crime Commissioner are also key members of the Partnership.

Few individuals and organisations have the time and money to do everything that they want to do, and the Safer South Derbyshire Partnership is the same. The SSDP has to prioritise where it focuses its activity and this is based very much on 'need' not 'want'. The nature of crime is also changing, some of which is moving to the online environment. Crimes such as cyber fraud and the online exploitation of children, the threat of violent extremism, and modern slavery pose new challenges for us because as well as often being 'hidden' and complicated they also require new technologies, systems, skills and approaches from all of us.

This plan highlights the priorities that our communities and partners have identified as most important for us to focus on over the next three years. The plan sets out our commitment to address the broader challenges and opportunities facing community safety over the next few years. It provides information on how the partnership has performed over the last three years and gives an insight into the structure of Community Safety Partnership working in Derbyshire and South Derbyshire.

Over the next three years there will be many challenges, not only as individual organisations but as a partnership. We will need to find leaner, more effective ways of working to achieve our vision and this will be difficult. This plan, however, confirms that all of the organisations within this partnership are committed to finding these solutions, and that the best way to do this is together.

Bob Wheeler, Chair Safer South Derbyshire Partnership.

A Growing District

South Derbyshire remains one of the fastest-growing Districts in the country, the population having increased by 15% since 2001. It is a District which covers an area of approximately 340 sq km and, according to the Office for National Statistics, more than 98,000 people now call it home. Despite strong population growth, the District remains largely rural, with many of the large-scale housing developments, including some with permission granted but not yet built, situated on the fringes of the city of Derby and the Swadlincote urban core.

By 2028, the population is expected to stand at 111,900, a growth of almost 15,000 people or 15.3% from the 97,075 figure of 2013. The largest population increases are expected to be among people over 75, where by 2031 there will be a 96% (4,489) increase.

Public Health England's Health Profile 2015 for South Derbyshire shows the three indicators in which the District scores worst are: GCSEs achieved (5 x A* - C passes including English and maths) , smoking in pregnancy and excess weight in adults

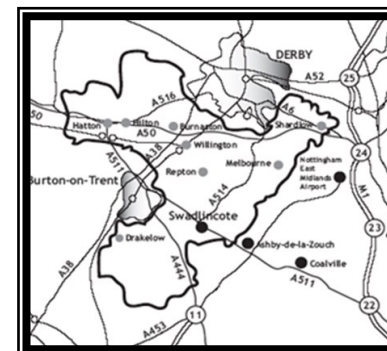
South Derbyshire boasts 3,500 business enterprises, up from 3,100 in 2013, resulting in record numbers of people in work. Of the 3,500 businesses, 83% are micro (0 - 9 employees); 13% small (10 - 49); 3% medium (50 - 249); 1% large (250+).

There are significant inequalities within South Derbyshire by gender, level of deprivation and ethnicity. For example, men in the least deprived areas of South Derbyshire can expect to live almost 10 years longer than those in the most deprived areas (with women there is a six year difference).

The District as a whole enjoys relative prosperity, with low levels of unemployment, although a dichotomy of economic problems do exist. The situation has generally improved over the past two decades as a result of successful regeneration initiatives.

Although young people and young men in particular are more likely to be responsible for crime and community safety issues, age is not the only factor. Other factors, including deprivation, mental health, substance misuse, housing, education and employment, combined with the family environment and community in which they live, create a complex mix of circumstances. Taking action to tackle one of these factors in isolation is unlikely to result in effective improvement.

The links between crime and disorder and areas of deprivation and the main urban centres remain. Although the risk of crime and disorder may be lower in more rural areas, the impact can be greater with residents feeling more isolated and vulnerable. Access to services can be more difficult, and it can be more difficult to provide effective and efficient solutions to address crime and disorder issues in rural settings compared to more urban areas.



Challenges

The world has changed a lot in recent years and that has had a huge impact on crime and how agencies (and Community Safety Partnerships) tackle it.

Many public sector organisations are continuing to go through a programme of reducing budgets which is resulting in fewer staff, cuts to services and restructuring. In some areas, valuable experience and skills are being lost which could impact on the partnership's ability to deliver its work. While staff and other resources may go, the work remains (if not grows) so there has to be a recognition that some things are going to have change.

Economy: Central Government funding for the responsible authorities, and particularly for local authorities, is expected to continue to be reduced over the next few years. This is likely to impact on services provided to those affected by crime and disorder issues by the authorities themselves, and by third party providers who may need to secure funding from alternative sources.

Environment: The granting of planning permission is an indication of significant building developments that may take place in the next few years.

Permission has been granted for residential developments providing more than 13,000 houses combined with other infrastructure including buildings for commercial and retail use and other community facilities. These developments are planned for areas across the county but some fall within South Derbyshire: Boulton Moor, Findern, Hilton, Mickleover and Swadlincote.

Cyber-crimes: Crimes committed, in full or in part, through a computer, computer network or other computer-enabled device. Most cyber-crime is carried out for financial gain and is a type of fraud. Where the reason is not financial, the most common reasons are for the sexual exploitation of children or to harass a victim. A significant increase is expected in both cyber-crime and the proportion of fraud that is cyber-related, as criminals feel it offers apparent anonymity and provides them with greater access to potential victims.

Terrorism: It is likely that further terrorist attacks will be conducted in Western Europe by individuals inspired by the rhetoric of ISIS. The unpredictable and individual nature of the activities of lone actors and spontaneous volatile extremists makes them extremely hard to detect and disrupt. The ease with which radical and extremist literature can be accessed on the internet means that young and vulnerable people can 'self-radicalise' in the home environment without their parents or guardians being aware that it is taking place.

Hate Crime: The knock on effect of any terrorist attack which takes place in the UK is likely to be an increase in hate crime, usually focused on the Muslim Community.

Organised Crime Gangs: OCGs involved in running across force borders 'County Lines' are regarded as a significant threat, with the main challenge being to identify and to protect vulnerable children and adults involved with or at risk from these OCGs. This requires partnership working and information sharing between agencies. Close partnership working is also required to identify new OCGs, especially those linked to the potentially growing risks of human trafficking and child sexual exploitation.

Derbyshire Partnerships

There are a number of other partnerships and strategies that link into the work of the Safer South Derbyshire Partnership and provide accountability for the work of the partnership.

Derbyshire Police & Crime Commissioner (PCC)

This partnership plan works to complement the Police and Crime Plan 2016-21 prepared by the PCC. The PCC replaced the Police Authority under the Police Reform & Social Responsibility Act 2011 and the first commissioner was elected in November 2012. The current Police and Crime Commissioner Hardyal Dhindsa was elected in May 2016.



The PCC role is designed to hold the police force to account and to bring communities and the police closer together, and includes the work of the Community Safety Partnerships across Derbyshire. The PCC now holds the community safety funding previously allocated by the Home Office, as well as the police budget.

The Police and Crime Plan sets out the Derbyshire Police priorities for the duration of the PCC's term in office. The Police and Crime Plan may be refreshed annually or changed at the PCC's discretion. The Commissioner will hold the Chief Constable to account for delivering the plan efficiently and effectively.

The PCC Police and crime plan can be found at : <http://www.derbyshire-pcc.gov.uk>.

Derbyshire Partnership Forum (DPF)

The DPF is the over-arching partnership that has strategic responsibility for Derbyshire. There are a number of thematic partnerships reporting into the DPF structure. These are:

- Safer Communities Board
- Derbyshire Economic Partnership
- Health and Wellbeing Board
- Culture Derbyshire

These are all priorities under the current Sustainable Community Strategy. For more information visit: www.derbyshirepartnership.gov.uk

Safer Communities Board (SCB)

The role of the Safer Communities Board (SCB) is to give leadership and direction to tackle crime, anti-social behaviour and substance misuse across the county. The SCB is supported and advised by the Safer Communities Tasking and Advisory Group (SCTAG) which comprises senior officers from the partners represented on the board and from each of the CSPs in Derbyshire. The priorities of the SCB are set out in the Derbyshire Community Safety Agreement 2017/20, which is informed by the annual Derbyshire Strategic Threat & Risk Assessment.

Risk & Threat

The priority categories of crime and disorder for Derbyshire are set by a joint strategic risk and threat assessment using the MoRiLE (Management of Risk in Law Enforcement) process. In November 2016, the priorities set for the forthcoming strategic period, which will be addressed as equal priorities, were:

- Anti-Social Behaviour
- Cyber-Crime
- Domestic Abuse
- Economic Crime
- Killed and Seriously Injured Road Collisions
- Organised Crime Groups (OCGs)
- Organised Immigration Crime, Human Trafficking and Exploitation (OICHTE)
- Rape and Serious Sexual Assault
- Safeguarding Adults
- Safeguarding Children
- Serious Acquisitive Crime
- Substance Misuse
- Terrorism and Domestic Extremism

Many of the priorities set through the risk and threat assessment will be key areas of strategic and operational focus for CSP Team. However, some of these priority areas will be led on by Safer Derbyshire, the Police or other Partnership boards and there may only be a training, reporting or awareness raising role for the SSDP.

The Partnership Strategic Assessment

The Partnership Strategic Assessment (PSA) provides an analysis of the crime and community safety issues in the Derbyshire County Council area.

The aim of the PSA is to assist the Safer Derbyshire partners in setting their strategic priorities and action plans. It sets out, for each of the main crime and disorder topics:

- The main issues for that topic;
- The main challenges for the year ahead;
- Suggested actions that partnerships could take to address issues.
- Key statistics to help identify the scale of the issues.

Where it is felt that further analysis of a specific topic in a local area is required, a request can be made to the Safer Derbyshire Research and Information Team.

The data contained in this document consists of Police crime data that has been extracted from the Safer Derbyshire Research and Information Team's (SDRI) Guardian crime database. The data used covers the period April 2015 to March 2016.

Recommended Action

Contained within the Strategic Assessment are some recommended action areas for Community Safety Partnerships to consider:

Domestic Violence (DV)

Raise awareness within local communities of the Domestic Violence support services available to encourage engagement with those services and encourage the reporting of DV incidents.

Organised Crime Gangs (OCG)

Ensure that the internal procedures for each partner organisation provide for sharing information with the Local Organised Crime Partnership Board. Ensure that the internal procedures for each partner organisation provide for the identification of vulnerable children and adults who are at risk of becoming involved with 'County Lines' OCGs and that they are made the subject of a safeguarding referral.

Acquisitive Crime

Monitor the volume of each type of acquisitive crime and, where a particular crime shows a significant increase in volume in a particular location, carry out targeted actions to address the specific issue in that local area.

Cyber-Crime

Invite the Digital PCSO to events arranged for specific community groups, Promote locally any national publicity on the latest scams being used and the campaigns to tackle fraudsters and cyber criminals, such as the 'Take Five To Stop Fraud' campaign.

Educate internal procurement staff on the methods used to commit procurement fraud in the public sector, in order to reduce the risk of occurrence.

Safeguarding Children

Hold sessions to educate schoolchildren on the signs of positive relationships and what constitutes abuse, ensuring that the message is delivered in a tailored and appropriate format for those with special educational needs and disabilities.

Hold awareness-raising sessions with schoolchildren on practical steps to improve their online security. With the development of technology and increasing use at a younger age, these sessions may need to be held with children at a younger age than in the past

Sexual Violence

In addition to actions being taken under the Derbyshire Domestic Violence and Sexual Violence (SV) Delivery Plan, the following actions should be considered: Hold sessions to educate school children on the signs of a positive relationship and on the issue of what constitutes consent; Raise awareness within local communities of the SV support services available and encourage engagement with them and the reporting of SV incidents.

Modern Slavery

Ensure that internal procedures allow for staff to identify any vulnerable child or adult who appears to be a potential victim of modern slavery, and to make them the subject of a national referral mechanism referral.

Priorities

Using the data and statistics in the 2016 Strategic Assessment, listening to our communities and the Police and Crime Commissioner and by analysing the annual Derbyshire Strategic Threat & Risk Assessment, the partnership has identified the following areas as priorities for the next three years.

All of the priorities will be delivered in accordance with the overarching principles as set out in the Derbyshire Strategic Threat & Risk Assessment: Reducing crime, attacking criminality, providing reassurance, protecting the vulnerable and delivering value for money.

Anti-Social Behaviour

- Work with partners to provide diversion, education and engagement.
- Tackle incidents of ASB, to include focus on hotspot areas, responding to community concerns and improving perceptions.
- Take enforcement action against perpetrators of ASB when necessary, to include voluntary and legislative measures.

Acquisitive Crime and Offender Management

- Work with partners and the community to maintain low levels of acquisitive crime through education and targeted intervention in hotspot areas.
- Effectively manage offenders through the Integrated Offender Management scheme.

Domestic Abuse and Serious Sexual Violence

- Promote and work with local services to ensure victims are able to access security, advice and support.

- Raise awareness with professionals and communities through promotion campaigns, education and training.

Communicating with the Public

- Understand the needs and concerns of local communities, and strive to address them.
- Build public confidence by actively engaging and communicating with different communities, partners and stakeholders.

Protecting Those Most at Risk

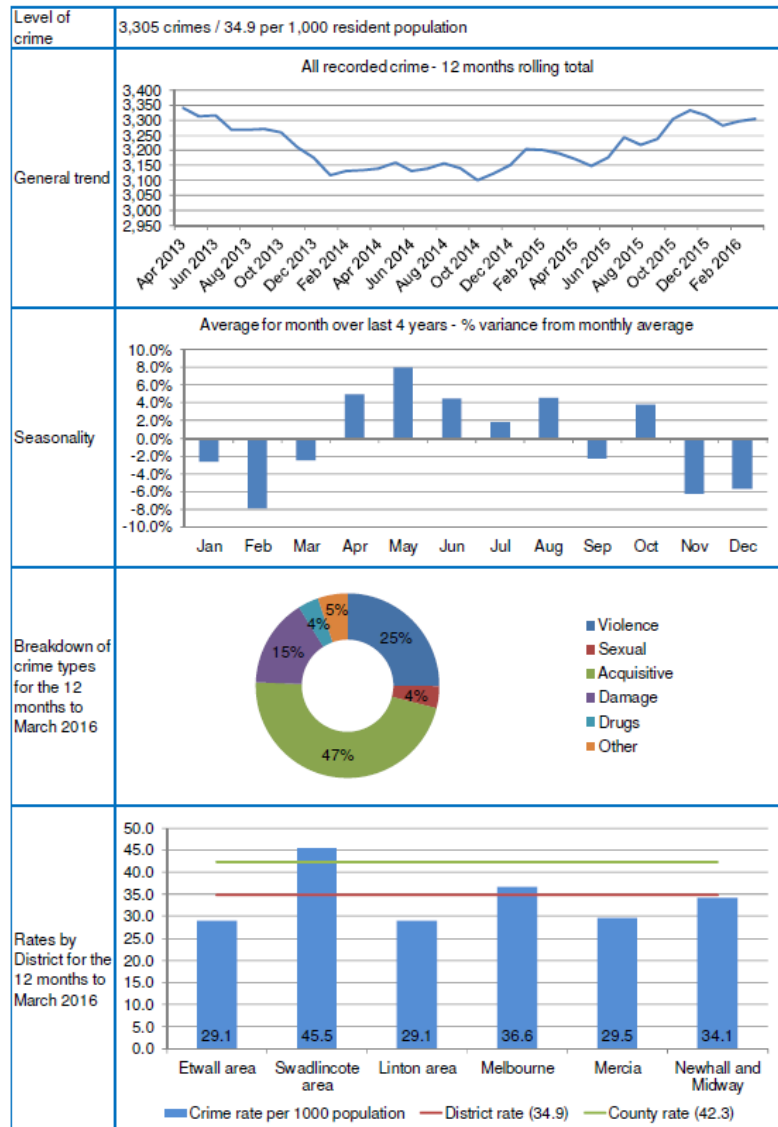
- Provide advice and security to those most vulnerable through the Safer Homes Scheme.
- Use ECINS (ASB case management system) and work with partners to offer support to victims of ASB.
- Work closely with schools and youth groups to raise awareness, educate, inspire and protect children and younger adults.
- Provide awareness-raising training to professionals and groups on hate crime, CSE, safeguarding, human trafficking and modern slavery.

Alcohol-Related Harm and Substance Misuse

- Work with partner agencies and licensed premises to reduce alcohol-related crime, anti-social behaviour and underage sales.
- Reduce alcohol and drug-related harm, through education, promoting local services and raising awareness of current issues.

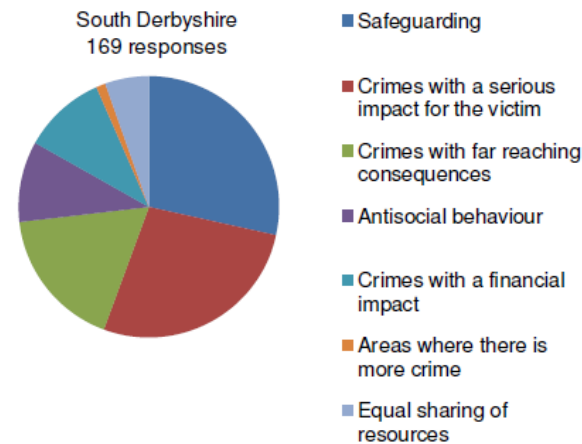
Performance

19.8. South Derbyshire



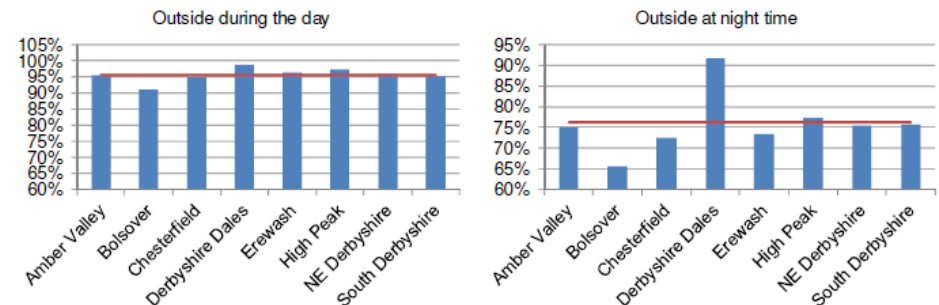
(Information taken from the 2016 Derbyshire Strategic Intelligence)

Part of the 'Over to You survey' in 2015 carried out by the Office of the Police and Crime Commissioner (OPCC), included a question on the subject of priorities. Respondents were asked to select up to two of seven priorities. The results varied between the Districts, and South Derbyshire's results are set out below.



According to the 2016 Strategic Assessment South Derbyshire remains one of the safest places to live in Derbyshire. The crime rate in South Derbyshire is 34.9 crimes per 1000 population. This is the third lowest after Derbyshire Dales and North East Derbyshire.

The Citizens Panel 2016 included questions regarding how safe respondents felt in different situations. The results varied between the Districts, and are set out below.



Review

The Partnership continues to work with partners and the community to offer a diverse range of crime reduction and educational activities and public engagement events. During the past year as a partnership we have:

Anti-Social Behaviour

- 13 ABC Contracts signed between April and Sept 2015. Seven successfully completed during the same period .
- 'Prison Me?, No Way' events took place in all four Secondary schools.
- 100 + young people attend the Friday Night Project every week.
- 790 young people attended the 20 summer play scheme sessions held in Swadlincote and Newhall Parks during the summer of 2016.
- 26 Community Protection Notice (CPN) Warnings issues, 15 CPNs issued and six Fixed Penalty Notices served on persistent ASB Offenders.
- 14 Acceptable Behaviour Contracts issued for young ASB Offenders.

Alcohol Related Harm & Substance Misuse

- The Dove Valley Pub Watch scheme has been extended to include pubs from Willington and Repton.
- Five offenders issued with Pub Watch Banning Orders in the Swadlincote area for offences including assault and damage. Fifteen individuals in total on Banning Orders
- Bi-monthly Violence, Alcohol and Licensing meetings held looking at problematic premises.

- Acquisitive Crime

- Secured 400 properties through the CVS-run Safer Homes Scheme.
- Farm Watch packs distributed to farms, the packs included Selecta DNA Property marking kits, advice leaflets, stickers and signage.
- No Cold Calling scheme set up in Findern.
- Leaflet drops carried out in hotspot areas to combat bogus callers, increases in shed breaks and van thefts.

Domestic Abuse

- Held fifth International Women's Day event in South Derbyshire promoting local agencies and services to 80 attendees.
- Held White Ribbon campaign in Swadlincote town centre, with more than 100 people signing the pledge against violence to women.
- Amended Safer Homes scheme to provide security for medium-risk DV victims

Community Engagement

- Funded 14 local Safer Neighbourhood projects, including CCTV schemes, lighting and youth activities.
- Held three hate crime surgeries in Newhall, Stenson and Swadlincote
- Hosted 15th annual Liberation Day event with more than 350 attendees.
- Schools input included Prison Me?, No Way, CSE and Cyber crime input.

Contact Us

For further information about this plan, or any aspect of community safety, please contact the partnership team.

Address:

Communities Team
South Derbyshire District Council
Civic Way
Swadlincote
Derbyshire
DE11 0AH

Telephone: 01283 595 924

Email: community.safety@south-derbys.gov.uk

Partner Websites:

www.south-derbys.gov.uk
www.derbyshire.police.uk
www.police.uk
www.saferderbyshire.gov.uk
www.southernderbyshireccg.nhs.uk
www.dlnrcrc.co.uk
www.derbyshire-fire-service.co.uk
www.derbyshire-pcc.gov.uk

