

Agenda Item 12

LOCAL AREA AGREEMENTS – BRIEFING NOTE

Background

The Government has selected twenty-one areas, including Derbyshire, to pilot Local Area Agreements (LAAs). The initiative is seen by Government as a significant step towards greater devolution and stronger leadership of local communities.

In making the announcement, the Local Government Minister, Nick Raynesford, said "these areas will be at the forefront of our plans to create a new relationship between central and local government." Councils and partners will benefit from less ring-fenced funding, less bureaucracy and more flexibility.

The LAA prospectus established the general principle that Agreements would be outcome based enabling local authorities and their partners to deliver national outcomes in a way that reflects local priorities identified in community strategies. The aim is to give increased freedom and flexibility to find local solutions to local problems and to prioritise spending to achieve outcomes identified in the LAA.

The LAA will rationalise the numerous area-based funding streams and the raft of associated targets into one agreement. The LAA could include as few as 30 targets compared to the 600+ targets being monitored in some areas.

The approach will build upon the Local Public Service Agreement (LPSA) framework, with Central Government setting high level outcomes from national PSAs and floor targets. Some will be non-negotiable but it is understood that, in the main, the outcomes, indicators and targets will be agreed locally based upon community strategies

The Government expects those organisations responsible for managing the key services within the LAA framework to work collectively to make a success of the pilots. In two-tier areas, the County Council has been designated by Government to lead the partnership process.

This policy framework is linked closely to the Treasury's wider moves to streamline decision-making with Regional Government Offices taking the lead in the negotiation process. It is expected that LAAs will have some standard headings including:

- Outcomes
- Targets
- Resourcing Plan
- Governance arrangements
- Links with existing strategies

The Government has identified a list of ring-fenced funding streams which could potentially be negotiated into the LAA, attached as Appendix A, and expects the Agreement to be structured around three strands:

- Children and young people
- Safer and stronger communities
- Healthier communities and older people

The Government is keen to see LAAs signed-off by mid-February 2005 with a start date of 1 April 2005.

Much of the detail, as yet, remains unclear and the Government is intending to issue an "Advice Note" by the end of November.

Proposed way forward

The LAA concept is about vision and leadership. The key issue is to decide what high level outcomes and targets we want to achieve and then consider the funding plan. In the short term, most of the area-based funding streams identified are committed, but the overall aim is to integrate and influence funding streams which would help to make a real difference to the delivery of national and local targets.

The Government expects LAAs to be taken forward through countywide LSPs and the Derbyshire Partnership Forum (DPF) will oversee the process. The importance of building on existing structures was recognised.

Partners agreed that the County Council Chief Executive should convene a small group, representative of the key agencies, to take the work forward utilising the sub-structure of the DPF and the Derbyshire Community Strategy "Champions."

Partners agreed that it would be beneficial to develop a fourth strand of "sustainable communities" into our LAA. This will:

- mirror the CPA shared priorities,
- link the work of the district LSPs,
- help engage SSPs,
- link the "Rural Pathfinder" initiative designated for Derbyshire Dales, High Peak and parts of Staffordshire.

The work undertaken to develop community strategies by LSPs, the second PSA, the Crime and Disorder Reduction Partnership strategies, the Drug and Alcohol Action Team strategy and the Children's Strategic Partnership will help in constructing the LAA, given the complexities and the very tight timetable.

A full update report will be made to the next meeting of the DPF on 10 December 2004.

David Lowe
 Assistant Chief Executive
 Derbyshire County Council
 Tel 01629 585349

Local Area Agreement Funding Streams		
Department	This is an indicative list of funding streams that could potentially be negotiated into a LAA. Further discussions will need to take place before we can confirm whether all the funding streams are capable of inclusion in a LAA. It is not an exhaustive list and there is no guarantee that these will be in LAAs.	
DfES	Adoption Support and Special Guardianship Choice Protects Children's Trust pathfinders Teenage Pregnancy Local Change Fund Vulnerable Children Grant Transforming Youth Work Development Fund Youth Service Disabled Access Vocational and work related learning Connexions	Sure Start/Extended Schools - (under consideration - currently subject to national ring-fence) Children's Fund - (under consideration - currently subject to national ring-fence) Education Healthy Partnerships Primary Strategy Central Co-ordination Key Stage 3 Central Co-ordination KS3 Behaviour and Attendance LEA support for workforce re-modelling
DfT	School Travel Adviser Budget (with DfES) Bus Challenge Fund	Rural Bus Subsidy Grant Road Safety Education
ODPM	Single Community Programme Liveability Fund Neighbourhood Renewal Fund [must be used to tackle deprivation]	Neighbourhood Wardens Neighbourhood Management Pathfinders
Home Office	Building Safer Communities Anti-social Behaviour CDRP allocation HO Regional Directors Fund Business Crime BCU Fund Through Care and After Care Grant Pooled Treatment Budget Criminal Justice Interventions Programme	Domestic Violence Crime Reduction capital Violent/alcohol crime DAT partnership support grant Neighbourhood Policing Fund DAT Young People's Substance Misuse Funding Future Builders Operation Gate-it Connecting Communities Youth Justice Board Grants



Improving life for local people

Derbyshire Partnership Forum Members
District LSP Chairs
CDRP Chairs

Nick Hodgson
Chief Executive

David Lowe
Assistant Chief Executive
Chief Executive's Office
Derbyshire County Council
County Hall, Matlock
Derbyshire DE4 3AG

Extension: 7340
Ask for: David Lowe
Our ref:
Your ref:
Date: 24 December 2004

Dear Colleague

Derbyshire Local Area Agreement

As you know a great deal of work has been undertaken in a very short period of time to shape up our Local Area Agreement.

I have enclosed a very rough first draft, which you must regard as "work in progress". At this stage, the aim has been to identify our top level priorities for the LAA around potential outcomes, indicators, targets and funding streams.

There is some way to go, but it would be helpful to have your initial thoughts, say by 7 January 2005, so that we can re-work the draft for submission later in the month.

The Partnership Forum Workshop, held on 10 December, involving all partners has helped to identify targets and funding streams and the "Champions" and Executive Group have used this information to produce the first draft.

The January submission will contain more details about the framework, rationale and the wider contextual issues, particularly around the treatment of geographically targeted funds.

The constant messages I have been giving Government are that the process must add value, it must reduce bureaucracy and must not damage any of our strong partnership relationships.

I look forward to receiving any views you may have and will circulate a revised submission sometime in the middle of January.

Best wishes,

Yours sincerely

A handwritten signature in black ink, appearing to read 'D. Lowe', with a long, sweeping underline.

David Lowe
Assistant Chief Executive



Draft 24 Dec 2004

DERBYSHIRE PARTNERSHIP FORUM

LOCAL AREA AGREEMENT

INTRODUCTION

Derbyshire has a growing local and national reputation for effective partnership working. There are a whole host of examples of this effective working which is coordinated through the Derbyshire Partnership Forum - the countywide LSP.

The range of joint working includes, for instance:

- the development of the county-wide Community Strategy
- the delivery of LPSA1
- the development of LPSA2
- the implementation of the county-wide IEG Strategy
- the establishment of a Safer Derbyshire Team which joins together the County Council's Community Safety Unit, the Police Community Safety team, the Youth Offending Service, the Drug and Alcohol Action team, the Domestic Violence Co-ordinator, the Research and Information team and staff from Connexions and the Fire Service.

As one of the initial 21 pilot LAA areas, Derbyshire wishes to build upon our commitment to improving key services for local people and furthering partnership working both locally and nationally.

FRAMEWORK

The Derbyshire Partnership Forum – the countywide LSP – is overseeing the process. Membership of the Forum is shown at Appendix A.

The Forum has set up a small Executive to manage the development of the LAA. The Executive will be responsible for ensuring effective implementation. Membership of the Executive is shown at Appendix B.

The overall management framework is set out at Appendix C.

In order to ensure wider engagement of Partners, the Executive nominated “Champions” to lead the development of each of the LAA blocks, including the missing fourth block of “sustainable communities.”

The “Champions” are identified below:

Children and Young People –

Bruce Buckley, Director of Social Services
Hugh Hastie, Chief Executive, Connexions

Healthier Communities and Older People

Wendy Lawrence, Chief Executive, Amber Valley PCT

Safer and Stronger Communities

David Coleman, Chief Constable
Frank McArdle, Chief Executive, South Derbyshire District Council

Sustainable Communities

Peter Sloman, Chief Executive, High Peak Borough Council
David Wright, Executive Director, Derby and Derbyshire Economic Partnership.

The “Champions” have worked with existing partnerships or with groupings of experts to develop the LAA and the potential outcomes, indicators, targets and funding streams are set out at Appendix D. (A detailed rationale for the inclusion or exclusion of key targets is to be inserted).

DEVELOPMENT WORK

To date, the following work has been undertaken to arrive at this draft initial submission:

- 10 November – Presentation made to Derbyshire Partnership Forum on the LAA based on the Prospectus and the initial advice arising from the ODPM/LAA Pilot Authorities Sounding Board. At this meeting the Forum appointed the Executive to manage the development of the LAA.
- 22 November – The Executive nominated “Champions”, established an inclusive approach to the development of the LAA and agreed to include the missing fourth block of “sustainable communities”
- Schedule produced for “Champions” listing:
 - National PSA targets across all government departments
 - Derbyshire LPSA2 proposed targets
 - Derbyshire Community Strategy targets
 - District Community Strategy targets
 - Existing and potential funding streams
- “Champions” organise meeting(s) of experts or use existing groups within their respective areas to develop and consult on potential outcomes, indicators, targets and funding streams. Schedules used by “Champions” within their four groups to aid determination of LAA.
- 10 December - Derbyshire Partnership Forum received a second and more detailed presentation on the LAA. Workshops led by the “Champions” were held to give all members of the Forum an opportunity to shape the LAA.
- Priorities arising from the workshop given detailed consideration by “Champions”
- 21 December - Executive meeting held, attended by Jane Todd, GOEM Regional Director and Marie-Laure Huke, GOEM Head of Local Government Team. Meeting considered and agreed a sharpened list of proposals.
- 23 December - First draft LAA submitted to partners for consultation and to GOEM.

DERBYSHIRE PARTNERSHIP FORUM - MEMBERS

Councillor John Williams, Leader of the Council (Chair), Derbyshire County Council

Nick Hodgson, Chief Executive, Derbyshire County Council

David Lowe, Assistant Chief Executive, Derbyshire County Council

Councillor Alan Cox, Leader of the Council, Amber Valley Borough Council

Peter Carney, Chief Executive, Amber Valley Borough Council

Councillor Eion Watts, Leader, District of Bolsover

Wes Lumley, Chief Executive, District of Bolsover

Councillor Ray Russell, Leader of the Council, Chesterfield Borough Council

David Shaw, Town Clerk and Chief Executive, Chesterfield Borough Council

Councillor Lewis Rose, Leader, Derbyshire Dales District Council

David Wheatcroft, Chief Executive, Derbyshire Dales District Council

Councillor R A Parkinson, Leader of the Council, Erewash Borough Council

John Rice, Chief Executive, Erewash Borough Council

Councillor D Lomax, Leader of the Council, High Peak Borough Council

Peter Sloman, Chief Executive, High Peak Borough Council

Councillor Graham Baxter, Leader, North East Derbyshire District Council

Chief Executive, North East Derbyshire District Council

Councillor Barry Whyman, Leader, South Derbyshire District Council

Frank McArdle, Chief Executive, South Derbyshire District Council

Councillor M Burgess, Leader of the Council, Derby City Council

Ray Cowlshaw, Chief Executive, Derby City Council

David Coleman, Chief Constable, Derbyshire Constabulary

John Allsop, Acting Chief Probation Officer, Derbyshire Probation Service

Bernie Cahill, Chief Fire Officer, Derbyshire Fire and Rescue Service

David Hughes, Executive Director, Learning and Skills Council – Derbyshire

Tony Hams, Chair, Peak District National Park Authority

Jim Dixon, Chief Executive, Peak District National Park Authority

Brian Wood, Secretary, Derbyshire Association of Local Councils

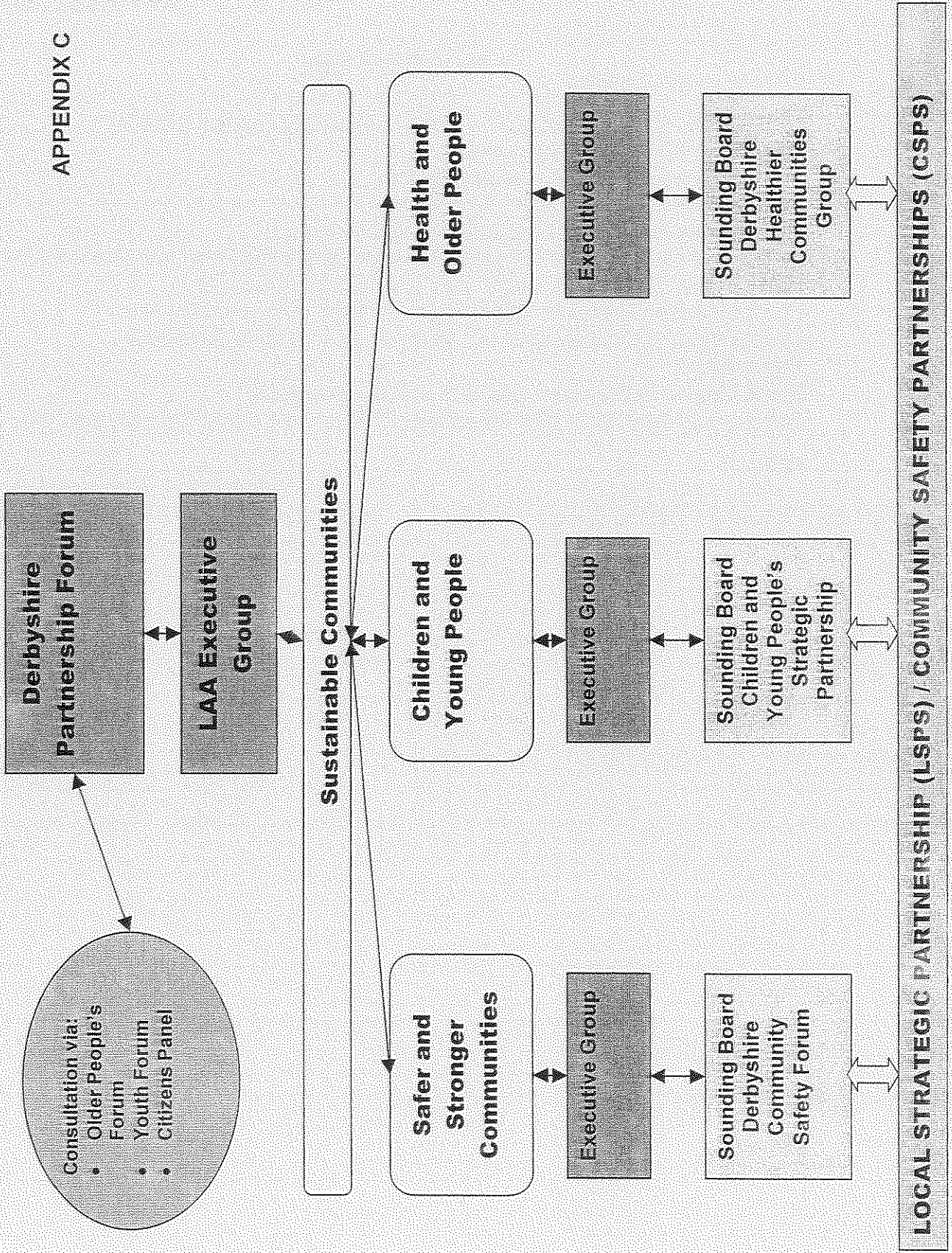
Freda Tallantyre, Deputy Vice Chancellor, The University of Derby
Anne Tipple, Chief Executive, Derbyshire Chamber of Commerce
Karen Foulds, District Manager, Job Centre Plus
Rt Revd David Hawtin, Bishop of Repton
Hugh Hastie, Chief Executive, Derbyshire Connexions Partnership
Kevin Holder, Chief Executive, North Eastern Derbyshire Primary Care Trust
Anne Dray, Chief Executive, Chesterfield Primary Care Trust
Neil Swanwick, Chief Executive, High Peak and Dales Primary Care Trust
Julian Hartley, Chief Executive, Tameside and Glossop Primary Care Trust
Wendy Lawrence, Chief Executive, Amber Valley Primary Care Trust
Anne Wright, Director of Public Health, Amber Valley Primary Care Trust
Paula Clark, Chief Executive, Erewash Primary Care Trust
Nina Ennis, Chief Executive, Dales and South Primary Care Trust
Tom Moat, Team Manager, English Nature
Sylvia Green, Derbyshire Voluntary and Community Sector Consortium
Mike Harris, Chief Executive, Derbyshire Rural Community Council
Carol Puddephatt, NFU
Chris Hastie, Derbyshire Learning Partnership Co-ordinator, Derbyshire
Learning Partnership
Bob Waterhouse, Trent Strategic Health Authority
Mark Sitton, Area Manager - Lower Trent Area Environment Agency
Steve Brookes, Home Office Director, Government Office for the East
Midlands
Marie-Laure Huke, Head of Local Government Team, Government Office for
the East Midlands

APPENDIX B

LAA EXECUTIVE

Nick Hodgson, Chief Executive, Derbyshire County Council (Chair)
David Coleman, Chief Constable
Bruce Buckley, Director of Social Services
Hugh Hastie, Chief Executive, Connexions
Wendy Lawrence, Chief Executive, Amber Valley PCT
William Jones, Director of Strategic Development, High Peak and Dales PCT
Peter Sloman, Chief Executive, High Peak Borough Council
Frank McArdle, Chief Executive, South Derbyshire District Council
David Wright, Executive Director, Derby and Derbyshire Economic Partnership
Sylvia Green, Derbyshire Voluntary Sector Consortium
David Lowe, Assistant Chief Executive, Derbyshire County Council (lead LAA contact)

APPENDIX C



APPENDIX D

TITLE: Children and Young People (Better life chances)

LAA Outcomes, Indicators and Targets (including LPSA2 targets shaded)

LAA Outcomes	Indicators	Possible Targets
Be Healthy	Physical Health	<p>a) Enhance the take up of sporting opportunities by 5-16 year olds so that the percentage of school children in England who spend a minimum of two hours each week on high quality PE and school sport within and beyond the curriculum increases from 25% in 2002 to 75% by 2006 and to 85% by 2008 and to at least 75% in each School Sport Partnership by 2008</p> <p>b) Halt the year on year rise in obesity among children under 11 by 2010 in the context of a broader strategy to tackle obesity in the population as a whole. (Possible LPSA2 target)</p>
	Sexual Health	<p>a) To reduce the under 18 conception rate by 50% by 2010 as part of a broader strategy to improve sexual health</p> <p>% of children whose re-injury or referral occurs within 12 months of a previous injury or referral</p>
Stay Safe	Number of re-registrations on child protection register	Reduction in the number of 0-15 Year Olds Killed or Seriously injured on Derbyshire's Roads
	Number of 0-15 year olds injured or killed in road collision	Increase the number of children looked after adopted within a twelve month period to 60 by 2007. 2003/4 baseline is 42; current target for 2007 is 50.
	Increase Adoption	

	<p>Bullying and discrimination, fear of crime and anti-social behaviour in and out of school</p>	<p>% of schools gaining a (good or better) Ofsted Inspection judgement on freedom from bullying, racism and other forms of harassment</p>
<p>Enjoy and achieve</p>	<p>Improve levels of school attendance (reduce half days missed through absence)</p>	<p>Reduce total absence in Secondary Schools from 7.76% in 2002/3 to 6.6% in 2007/8 and in Primary Schools from 5.57% in 2002/3 to 4.6% by 2007/8.</p>
	<p>Improve Educational Attainment</p>	<p>Improve to 60% the number of young people achieving 5 A*-C grades by 2007.</p>
	<p>Improve the average point score for all young people by 2007</p>	<p>Improve the average point score for all young people by 2007 - KS 2 English to 29 pts</p>
		<p>Improve the average point score for all young people by 2007 - KS 2 Maths to 29 pts</p>
		<p>Improve the average point score for all young people by 2007 - KS 3 English to 36 pts</p>
		<p>Improve the average point score for all young people by 2007 - KS 3 Maths to 38 pts</p>
	<p>Exclusions</p>	<p>Improve the average point score for all young people by 2007 - KS 3 Science to 37 pts</p>
	<p>Educational attainment of 16 year old looked after children compared to their peers</p>	<p>Improve the average point score for all young people by 2007 - KS4 Avg Pts to 37 pts</p>
		<p>a) No of pupils per 1000 permanently excluded from Primary Schools to 0.5, Secondary Schools to 1 and Special Schools to 0 by 2009.</p>
		<p>Educational achievement of Looked after Children at 16 - 5 A* - C grades - 15%, 1 A* - G - 75%</p>

	Childcare Provision	To increase the number of childcare places per 100 children to 20 per 100 by 2009.
Achieve Economic Well Being	Engaging in further education, employment or training on leaving school. Care Leavers engaging in further education, employment or training on leaving school.	Improve the percentage of 16 to 18 year olds in employment, education and training. Current target is 94% by 2009. Increase the % of care leavers participating in education, training and employment from 71.7% in 2003/4 to 80% by 2007. (LPSA2 target).
Make a positive contribution	Participation/Citizenship	To increase the proportion young people participating in: a) election of school/college council b) mock general elections c) youth forum elections

**Funding Streams
Children and Young People:**

DfES Transforming Youth Work	110,743	
DfES Special Educational Needs & Disability Act	75,679	
Lottery-PE & Sport in Schools	6,097,000	
DfES Surestart - Bolsover 04/05	751,800	
DfES Surestart - Chesterfield 04/05	717,500	
DfES Surestart - NE Derbyshire 04/05	697,000	
DfES Delivery Support fund 04/06 ^	1,155,183	
DfES Child info Service 04/06 ^	186,468	
DfES workforce Development 04/06 ^	908,939	

DfES Nursery Schools Dev 04/06 ^	73,890	
DfES Extended Schools (part) 04/06^	26,500	
DfES New Places Disadvantage areas 04/06^	402,010	
DfES New Places other area 04/06^	272,994	
DfES New Places Childcare 04/06^	63,007	
DfES New Places Playgroup Dis. Areas 04/06^	107,250	
DfES New Places Playgroup other area 04/06^	36,017	
DfES SEN & Disability Dev. 04/06^	309,911	
DfES Childrens Centres 04/06^	1,864,542	
DfEs Childminder Scheme 04/06^	110,355	
Young People's Substance Misuse Partnership Grant	724,826	
DfES Surestart - Amber Valley	675,000	
Positive Activities for Young People (PAYP)	202,154	
DfES Millennium Volunteers	77,255	
DfES Millennium Volunteers	39,613	
DfES Childrens Fund 04/05	1,043,846	
NE Derbyshire Coalfields Emp Action Zone	1,000,000	
Vocational and work related learning 14-16 yrs	20,000	
Connexions	8,009,441	
CYP TOTAL		25,758,923

Other funding streams

Children and young people:

Choice Protects
Childrens Trust Pathfinders
DoH - Teenage Pregnancy
Adoption Support and Special Guardianship
Local Change Fund
CAMHS Grant
PCT Child Protection Team funds
Education Health Partnerships
Primary Strategy Central Co-ordination
Vulnerable Children Grant
Key Stage 3 Behaviour and Attendance
Key Stage 3 Central Co-ordination Safeguarding Children
Big Lottery Fund
LSC
Share of (£1.5m) LPSA2 Pump priming funds

TITLE: Healthier Communities and Older People

LAA Outcomes, Indicators and Targets (including LPSA2 targets shaded)

LAA Outcomes	Indicators	Possible Targets
Improved health of the population.	Reduction in mortality rates and inequalities in health	Reduction in mortality rates by 2010 from heart disease and stroke, and related diseases by at least 40% (cancer 6%) in people under 75 with at least a 40% reduction in the inequalities gap between the fifth of areas with the worst health and deprivation indicators and the population as a whole.
Increased life expectancy.	Reduction in adult smoking rates	Reduction in health inequalities by 10% by 2010 as measured by infant mortality and life expectancy at birth.
Reduced Health inequalities.	Reduction in drug misuse	Reducing adult smoking rates to 21% or less by 2010 with a reduction in prevalence among routine and manual groups to 26% or less.
Improved quality of life and independence of vulnerable older people.	Increase in take up of pension credit	Increase in problem drug misusers accessing treatment (from 98 baseline) by 100% by 2008 and increase year on year the proportion of users successfully sustaining or completing training programmes.
	Evidence of improved well-being of older people	Increased take up of Pension Credit/Welfare Benefit Entitlements for older people so that unclaimed entitlements are reduced by £86 million by 2007. Estimated baseline is £110 million. Current target £92 million.
		Possible target required to cover all five issues below Reduce emergency bed days by 5% by 2008 through improved care in primary care and community settings for people with long term conditions. Proportion of older people supported to live in their own home. Reduce permanent admission of older people to care homes. Baseline is 93 admissions of supported residents aged 65+ per 10,000 population. Current target or 2007 is 88 – with PSA 2 this would be stretched to 85.
		Reduce time delays for adaptations. Compliance with current locally agreed targets of normal major adaptations taking no more than 45 weeks and high priority adaptations 39 weeks to 80% by 2007. 2003/4 baseline is 56% and current target is 70%.

	Reduction in falls of older people inside and outside the home.
Increased level of physical activity	By 2008 increase the take up of sporting opportunities by increasing the numbers who participate in active sports at least 12 times a year by 3%. Increasing the number who engage in at least 30 minutes of moderate intensity level sport at least 3 times a week by 3%. Ensure 280 schools achieve Level 3 of the Health Promoting Schools Standard by 2007
Evidence of improved quality of life of people with mental health problems	Improve life outcomes of adults and children with mental health problems through year on year improvements in access to crisis and CAMHS services and reduce the mortality rate from suicide and undetermined injury by at least 20% by 2010.

Funding Streams

Healthier Communities and Older People:

DoH Tobacco Funding	20,000
DoH Food Co-ordinator (1 per LA area)	
Sport England – Physical Activity	100,000
Pooled Treatment Budget	2,395,000
TOTAL	2,515,000

Other funding streams

Healthier Communities and Older People:

Housing Corporation
DWP
Carers Grant
Big Lottery Fund
Share of (£1.5m) LPSA2 Pump Priming Funds

TITLE: Safer and Stronger Communities

LAA Outcomes, Indicators and Targets (including LPSA2 targets shaded)

LAA Outcomes	Indicators	Possible Targets
<p>To reduce crime, the harm caused by illegal drugs and to reassure the public, reducing the fear of crime and anti-social behaviour (all areas) (Mandatory Outcome)</p>	Reduce burglary	Reduce burglary by 30%
	Reduce vehicle crime	Reduce vehicle crime by 10%
	Reduce violent crime	Reduce violent crime by x%
	Reduce Fear of Crime and Anti-Social Behaviour	Reduce Anti-Social Behaviour reports (basket of indicators as set out below:) i) That Derbyshire residents believe that there has been a reduction in Anti-social behaviour by 10% ii) Reduction in the number of Criminal Damage offences by 17% iii) Reduction in the number of deliberate secondary fires by 5%
	Reduce the number of young people re-offending	Increase % of police officer time spent on frontline duties
	Reduce harm caused by drugs	Reduce the number of young people re-offending by x% Increasing the numbers of drug misusing offenders entering treatment through the criminal justice system from x to y

	Reduce harm from alcohol	Target to be determined
Improve the safety of local people	Reduce serious road collisions	To reduce the number of people killed or seriously injured in road accidents on local roads (excluding motorways) by 50% in the top 20% of deprived wards (from the 1995-1998 average baseline) by 2010. Milestone target by March 2007 to be set
Strong Sense of Community	Volunteering – target to measure health of voluntary and community sector.	Survey on level of formal and informal volunteering in the county – MORI baseline 2005.
Empowering decision making and the delivery of services.	Decision Making	Increase in the % of adults who feel they can influence decisions affecting their local area. (QoL indicator 23/MORI/Citizens' Panel)
Cleaner and Greener Public Spaces	Cleaner and greener public space	Proportion of relevant land and highways defined under EPA 1990 Part IV Section 86 (as %) that is assessed as having combined deposits of litter and detritus (e.g. sand, silt, other debris) across 4 categories of cleanliness (Clean, Light, Significant, Heavy).

**Funding Streams
Safer and Stronger Communities:**

Partnership Support Grant	97,862
Criminal Justice Interventions Programme	570,653
HO Regional Directors Allocation	30,000
Sub-total	698,515
Bolsover	
HO Building Safer Communities	112,603
HO Regional Directors Allocation	3,700
HO Anti Social Behaviour	25,000

Sub-total		141,303
Chesterfield		
HO Building Safer Communities	141,761	
HO Anti-Social Behaviour	25,000	
HO Regional Directors Allocation	12,500	
Domestic Violence	25,000	
Sub-total	204,261	
Derbyshire Dales		
HO Building Safer Communities Fund	89,648	
HO Anti-social Behaviour Fund	25,000	
HO Regional Directors Allocation	3,700	
Domestic Violence	25,000	
Sub-total	143,348	
Erewash		
HO Building Safer Communities Fund	144,498	
HO Regional Directors Allocation	3,700	
HO Anti-social Behaviour Fund	25,000	
Sub-total	173,198	
High Peak		
ODPM Liveability Fund	1,100,000	
HO Building Safer Communities Fund	107,008	
HO Regional Directors Allocation	3,700	
HO Anti-social Behaviour Fund	25,000	

Sub-total	1,235,708
North East Derbyshire	
HO Building Safer Communities Fund	118,715
HO Regional Directors Allocation	3,700
HO Anti-social Behaviour Fund	25,000
Sub-total	147,415
South Derbyshire	
HO Building Safer Communities Fund	101,518
HO Regional Directors Allocation	3,700
HO Anti-social Behaviour Fund	25,000
Sub-total	130,218
TOTAL	2,873,966

**Other Funding Streams
Safer and Stronger Communities:**

Youth Justice Board grant
Big Lottery Fund
Share of (£1.5m) LPSA2 Pump Priming Funds

TITLE: Sustainable Communities

LAA Outcomes, Indicators and Targets (including LPSA2 targets shaded)

LAA Outcomes	Indicators	Possible Targets
Economically Prosperous (Improved employment chances for local people)	<p>Number of economically inactive</p> <p>Reduce Deprivation</p> <p>Qualifications/basic skills/progression</p>	<p>Reduction in numbers of economically inactive in Derbyshire</p> <p>To reduce the unemployment rate in the 16 worst wards with the highest unemployment rates in April 2004 to no more than 50% above the national (England average) by March 2007</p> <p>Reduction in the number of super output areas in top 25% IMD</p> <p>Increase the number of adults with the skills required for employability and progression to higher levels of training through reducing by at least 40% the number of adults in the workforce who lack NVQ 2 or equivalent qualifications by 2010</p> <p>Increase the numbers of people, particularly those from under-represented groups, achieving success in obtaining a vocational qualification up to and including level 2, over and above the targets agreed with the Learning and Skills Council.</p>
Decent homes	<p>Survival rates of VAT registered businesses surviving after 12, 24 and 36 months</p> <p>Increase employment and employment based training for disabled people</p> <p>Reduction in homelessness</p>	<p>Increase the survival rate of VAT registered businesses after 12, 24 and 36 months</p> <p>Increase employment and employment based training for disabled people to 2% by 2007. Spring 2004 baseline is 1.24%. Current target for 2007 is 1.36%</p> <p>Number of statutory homeless acceptances by local authority</p>

Safeguarded Heritage	Derelict listed buildings on the At Risk Register	Reduce the number of derelict listed buildings on the At Risk Register
Improved Access for local People	Public transport	Local bus passenger journeys per year To increase the number of deprived Super Output Areas with hourly or better weekday public transport links to a main employment centre between 07.00 to 9.30 and 5.30 to 18.00 from x in 2003 to y by 2007
Environmental Sustainability	Household waste/recycling	Reduce the % tonnage of waste which has been landfilled

Funding Streams Sustainable Communities:

Dft Rural BCF, Wirksworth	143,750
Dft Rural BCF, Erewash (Derby City?)	92,100
Dft, Rural BCF, Amber Valley	142,750
Dft Urban BCF, North Derbys Rural Access	156,500
DFT Urban BCF, Chesterfield	
Annual competition for LAs? – £18m for 2003	159,011

TOTAL 694,111

Other Funding Streams Sustainable Communities:

EMDA/SSP
Housing Corporation
Regional Housing Board
New Deal for 50+

JobCentre Plus Transport Projects Fund (£5million for transport projects in 63 high employment deprivation areas

Big Lottery Fund

Groundwork - DEFRA/ODPM

English Partnerships Derelict Land Grant

Aggregates Levy

Landfill Tax

Bus Challenge Fund

Rural Bus Subsidy Grant

Share of (£1.5m) LPSA2 Pump Priming Funds