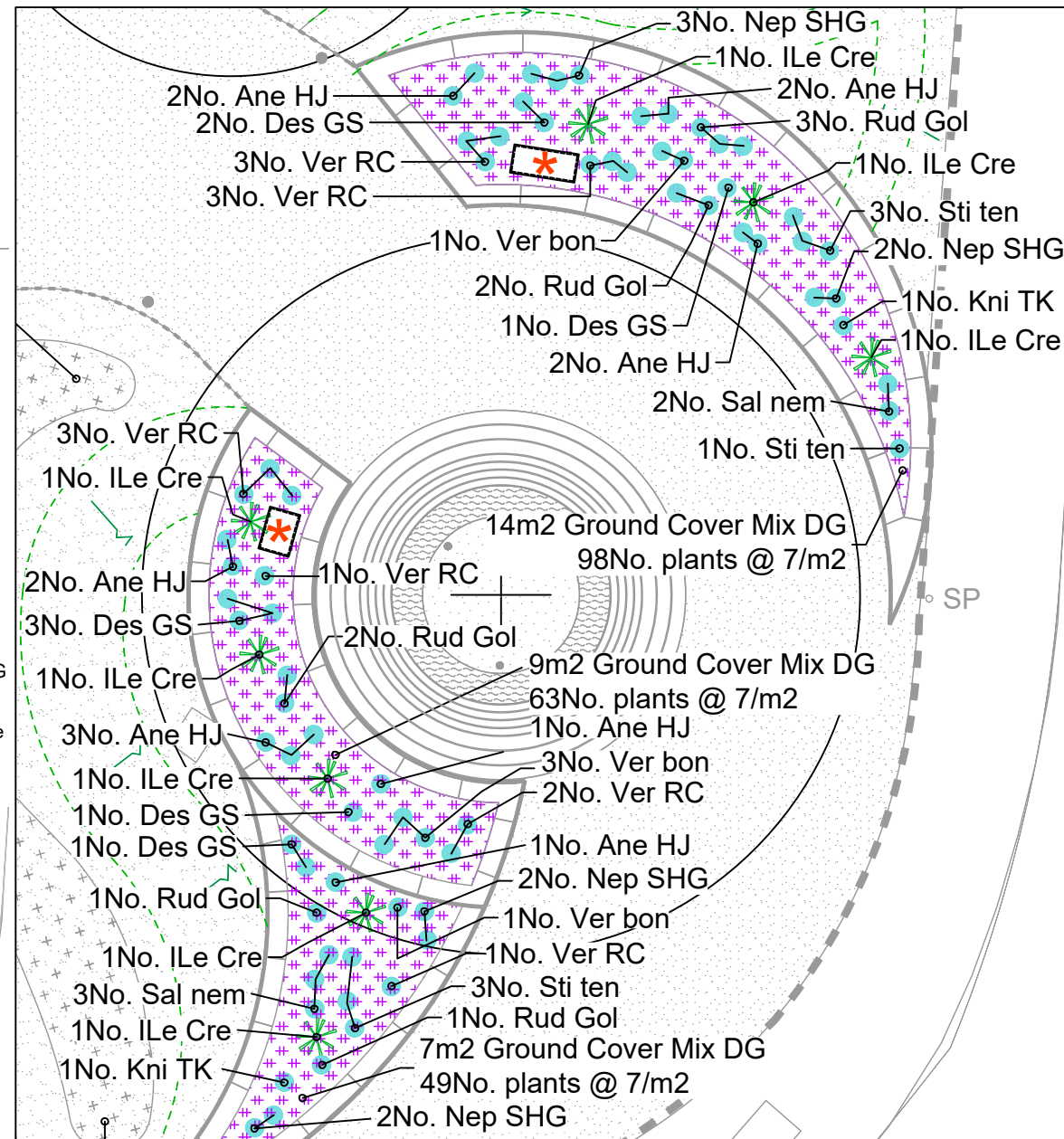
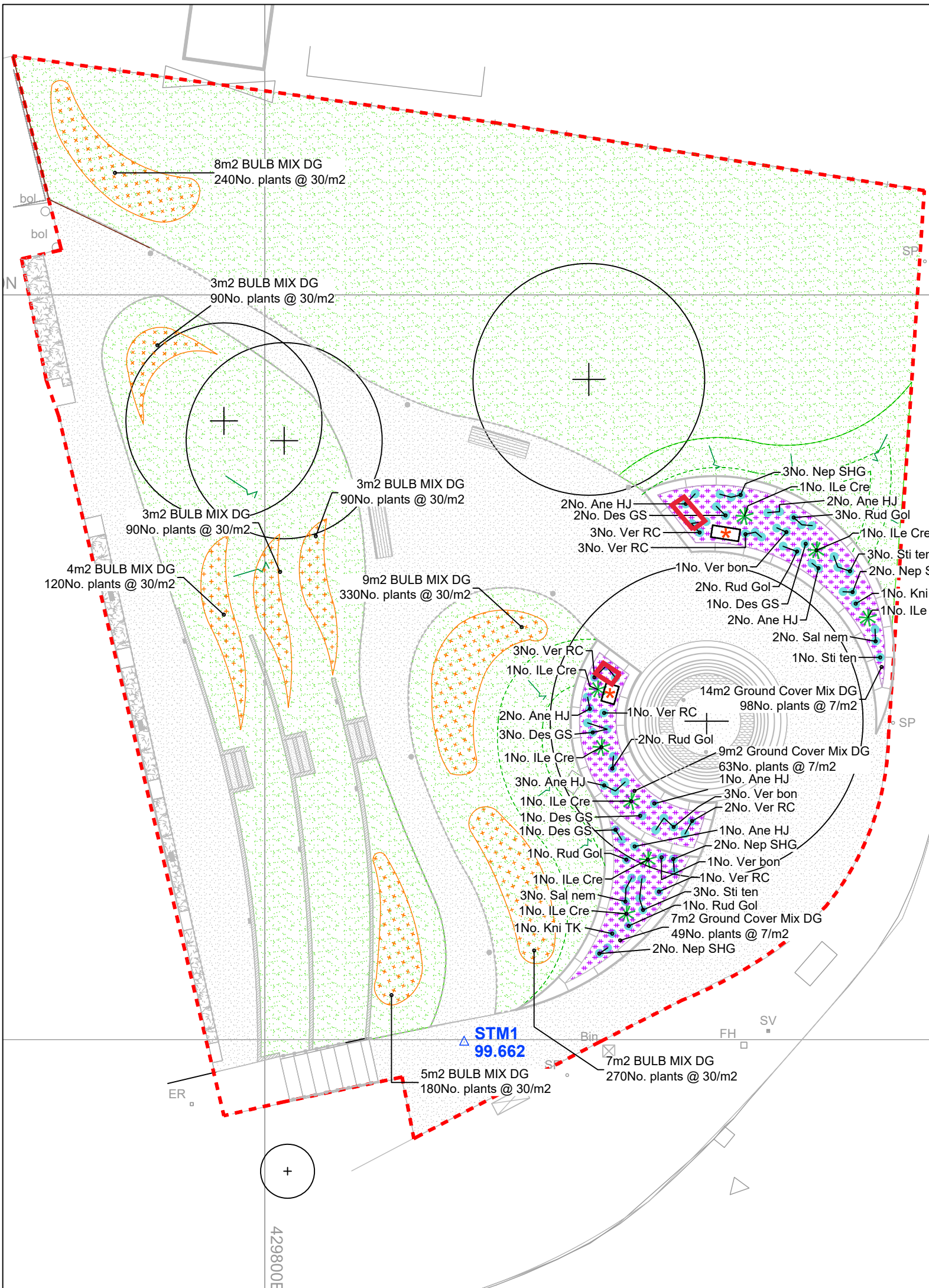


Do not scale this drawing (printed or electronic version).
 Contractors must check all dimensions from site.
 This drawing is copyright and is for use on this site only. This drawing should be read in conjunction with all relevant consultants drawings and specialist subcontractor / supply chain drawings and specifications.
 All works to be carried out in accordance with the latest British Standards / Codes of Practice unless specifically directed otherwise in the specification.
 Responsibility for the reproduction of this drawing in paper form, or issued in electronic format, lies with the recipient to check that all information has been replicated in full and is correct when compared to the original paper or electronic image.
 Graphical representations of equipment on this drawing have been co-ordinated, but are approximations only. Please refer to the specifications and / or details for actual sizes and / or specific contractor construction information.

Detail Planting Plan
 @ 1:100



Notes:-

- KEY
- Soft Planting
- (+) Existing Tree Retained
 - (*) Structural Plant
 - (.) Seasonal Plant
 - (x) Ground cover mix
 - (■) Earth Mounding
 - (■) Grass - Seed
 - (*) Bulb mix

QTY	UNIT	CODE	PLANT NAME	STOCK	SPACING
8	No.	ILe Cre	Ilex crenata 'convexa' (Topiary Ball)	C 15L	40-50cm 2/m2
Herbaceous plants					
13	No.	Ane HJ	Anemone x hybrida 'Honorine Jobert'	C 2L	3/m2
8	No.	Des GS	Deschampsia caespitosa 'Goldschleier'	C 2L	5/m2
2	No.	Kni TK	Kniphofia 'Tawny King'	C 2L	3/m2
9	No.	Nep SHG	Nepeta 'Six Hills Giant'	C 2L	3/m2
9	No.	Rud Gol	Rudbeckia fulgiva sullivanii 'Goldsturm'	C 2L	3/m2
5	No.	Sal nem	Salvia nemorosa 'Caradonna'	C 2L	3/m2
7	No.	Sti ten	Stipa tenuissima	C 2L	5/m2
5	No.	Ver bon	Verberna bonariensis	C 2L	5/m2
13	No.	Ver RC	Veronica spicata 'Royal Candles'	C 2L	4/m2
Plant Mixes					
20%	252	No.	Galanthus nivalis		06-May
20%	252	No.	Crocus biflorus 'Blue Pearl'		5/+
20%	252	No.	Crocus 'Remembrance'		08-Jul
20%	252	No.	Narcissus 'Avalanche'		14-Dec
20%	252	No.	Narcissus 'Curlw'		12-Oct

Individual varieties to be spread evenly throughout the proposed area.

30m2 Ground Cover Mix DG planted @ 7/m2

15%	32	No.	Primula veris	C 2L	20-30cm
15%	32	No.	Tiarella 'Iron Butterfly'	C 2L	20-30cm
15%	32	No.	Geranium 'Johnson's Blue'	C 2L	20-30cm
15%	32	No.	Geranium sanguineum 'Album'	C 2L	20-30cm
10%	21	No.	Alchemilla mollis	C 2L	20-30cm
10%	21	No.	Liriope muscari	C 2L	20-30cm
10%	21	No.	Phlox divaricata	C 2L	20-30cm
10%	21	No.	Saxifraga x urbium	C 2L	20-30cm

Individual varieties to be planted in groups of 1, 3 or 5.

Notes and Abbreviations

- C = Container (or pot) grown, followed by size of the container (or pot).
- QTY = Quantity
- RC = Root Collar (minimum) diameter in millimetres
- SIZE = Height or Spread of juvenile plant.
- STOCK = Root condition/protection method eg Bare root.

- Refer to specification for further information.
 - All plants to be completely hardened off
 - Substitutions to be agreed with Landscape Architect.

C02	09/10/17	CONSTRUCTION	AT	MT
C01	05/05/17	CONSTRUCTION	KM	AG
REV.	DATE	DESCRIPTION	DRAWN	CHKD
URBAN GREEN				
Jactin House, 24 Hood Street, Manchester M4 6WX T: 0161 312 3131 W: urbangreen-space.co.uk				
Client: South Derbyshire County Council				
Project: Diana Garden, Swadlincote				
Title: Soft Landscape				
Status: CONSTRUCTION				
Project:	11260	Drawn:	KM	Checked: MT
Scale @ A3:	1:150	Date:	05/05/17	Approved: MK
Drawing No:	11260_L06	Revision:		C02