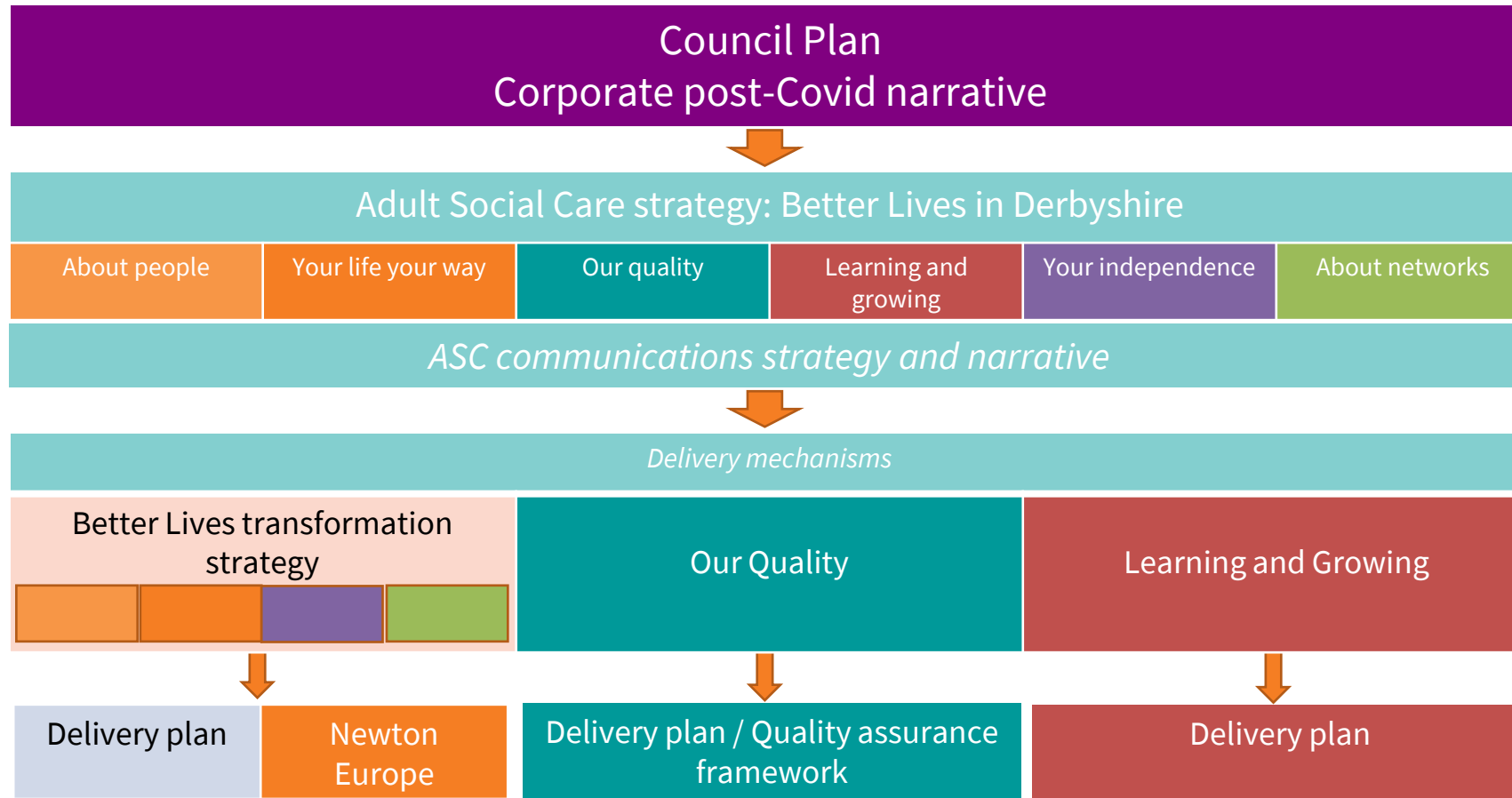


Better Lives



ASC approach



ASC narrative – Our Vision

The heart of Derbyshire is its people. Every one of us, and every community, is strong, proud and independent: we have the Derbyshire Spirit at our core and we work together to achieve the best quality of life possible for everyone.

That Derbyshire Spirit exists regardless of age, disability or ill health. We all want to be independent, to live our lives in our way, to have thriving local communities to call on and to have control of our lives. Our new approach to social care for those of us who are older or have disabilities, called Better Lives in Derbyshire, matches those desires.

We already have nationally recognised best practice in many areas of our work but to deliver what the people of Derbyshire need we need to adapt more quickly, embrace change and ensure that the right networks of support – often not the council – are available.

The Better Lives in Derbyshire approach isn't driven by the need to save money despite the challenges on council budgets. It's about putting people at the heart of everything we do, challenging old ways of thinking and making sure the right solutions are available in the right place at the right time. It's about maximising and regaining independence, and preventing the need for intervention. It's about being an enterprising council and doing the right thing for our people, our place and our communities every day.

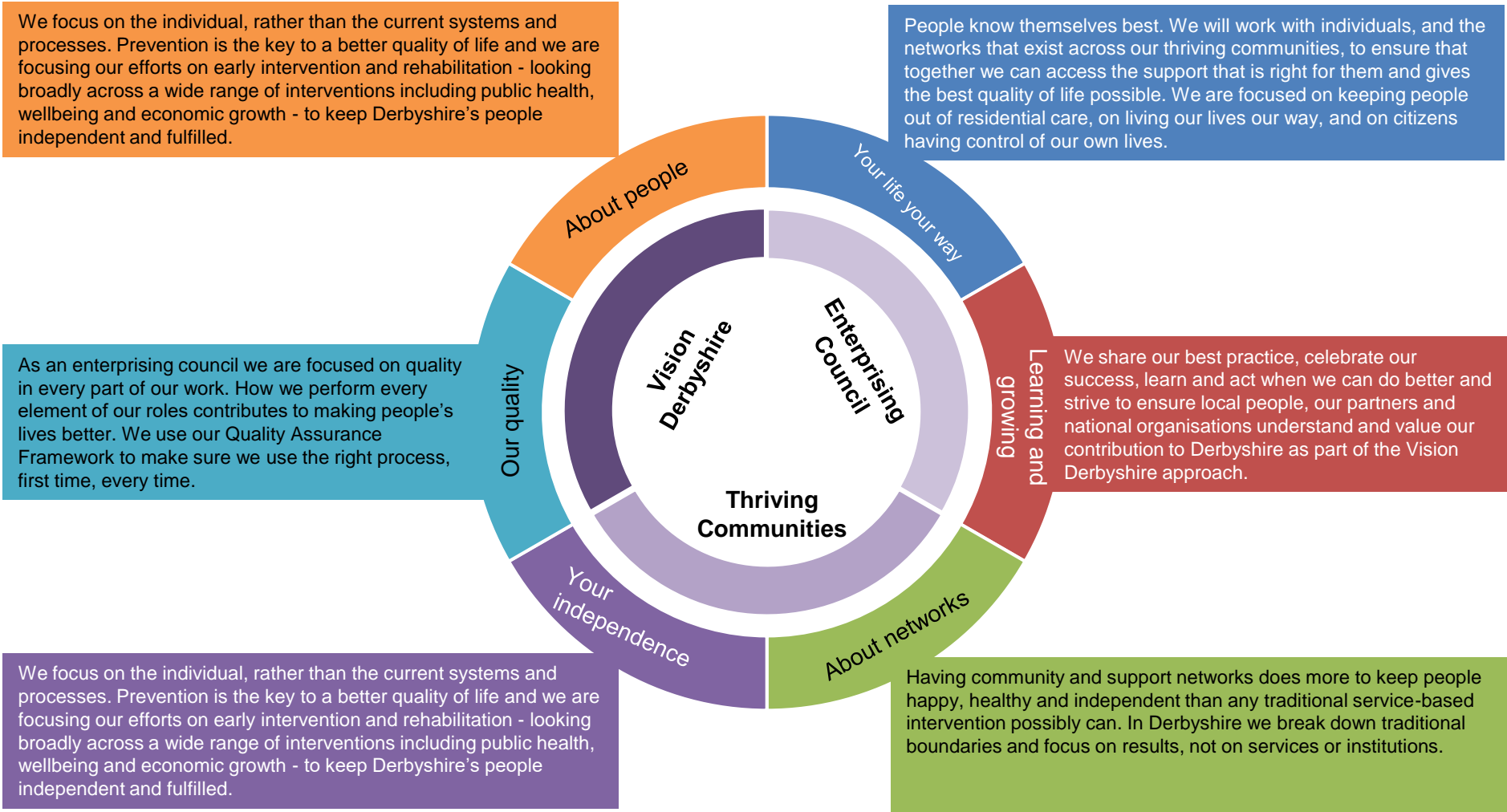
We are focused on quality in every part of our work. How we perform every element of our roles contributes to making people's lives better. We share our best practice, celebrate success, learn and act when we can do better and strive to ensure local people, our partners and national organisations understand and value our contribution to Derbyshire.

ASC narrative – Our Principles

- We focus on people and ensure our systems support that focus.
- We always promote independence, knowing that independent lives are happier, healthier and more fulfilled.
- As part of our Thriving Communities work, we recognise that people are the experts in their own lives and work together, and wider community networks, to achieve the best quality of life possible.
- We are a bold and enterprising council, looking for the best solution and recognising that supporting people through change will often achieve the best outcome.
- In line with the Vision Derbyshire approach, we look outward and forward in our approach to embracing the social care of the 21st century, not inward and backward.
- We strive for the highest quality standards in everything we do.
- We share best practice, celebrate success and learn and act when we can do better.



ASC narrative – Our Focus



Where are we focusing?

1 ACCESSING SUPPORT

When a need arises, we work with the person to enable them to live fulfilling, independent lives **at home**

2 SHORT TERM SUPPORT

We provide active, short term interventions to build **confidence and skills for independence**

3 LONG TERM SUPPORT

For those receiving long term support, we work with people to **maintain or improve their independence**

Areas or teams we're working with to achieve this...



Hospital Discharge

Discharge support to get people home from hospital



Short Term Services

Extra support to help people live fulfilling lives at home



Working-Age Adults

Maximising independence for those with disabilities



P&P Assessments

Support planning for independent lives



P&P Reviews



Data Dock

Using data to help us improve our practice and services